

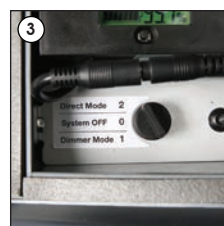
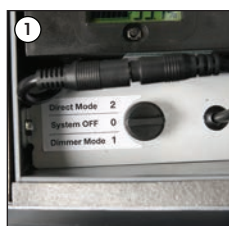
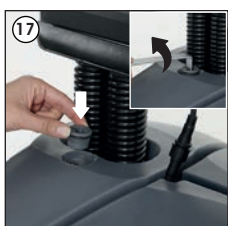
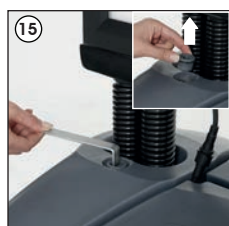
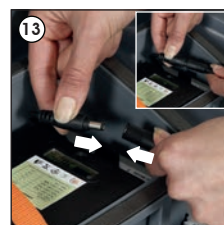
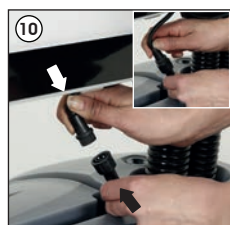
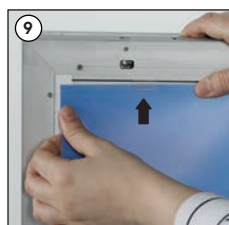
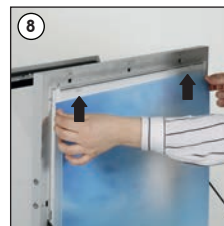
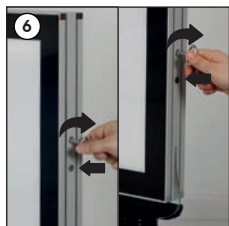
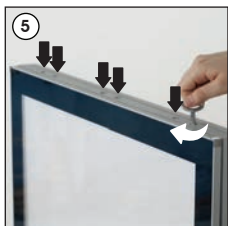
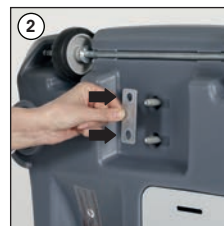
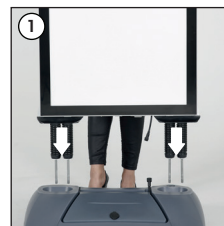
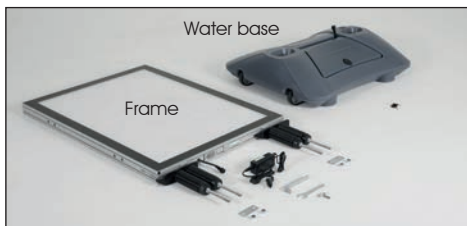
Installation Instructions

(1008624)

WINDPRO WITH LED

Each product package includes mounting accessories

- 1 x Frame
- 1 x Water Base
- 1 x Battery
- 1 x RF Receiver
- 2 x Remote control
- 2 x Washer
- 4 x Nut M10
- 1 x 19 Spanner
- 1 x Drum cap wrench
- 1 x Water base key
- 1 x Frame key

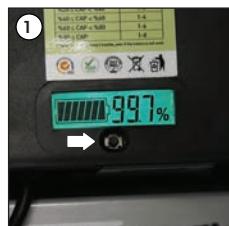


System off 0

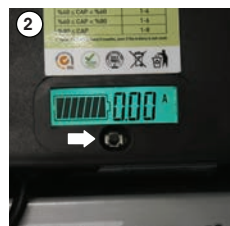
Dimmer Mode 1: Remote control will be activate. The frame works with %50 or %100 bright.

Direct Mode 2: The battery connect directly to illumination. The frame works with %100 bright.

One button can shows four specifications



Capacity of Battery (0 - 100 %)



Instant consumption (0 - 2) Ampere



Capacity of battery (0 - 8) Ampere/hour



Battery voltage (20 - 26,6) Volt



- Please inform the order number on the product or on the carton (e.g. 1/10001394-460) to the place that you have made the purchase if any problem with the product occurs.
- Bitte teilen Sie bei jeglichen Problemen, die auf dem Artikel oder auf der Verpackung aufgeführte Auftragsnummer (z.B. 1/10001394-460) Ihrem Händler mit.
- Lüften üründeki herhangi bir sorun için ürünü veya paketin üzerindeki sipariş numarasını (örnek: 1/10001394-460) satın aldığınız yere bildirin.
- All rights reserved. All pictures, figures and writings are secured internationally by copy-right law. Infringements will be sued by civil and legal law.
- Alle Rechte vorbehalten. Alle Bilder, Zeichnungen und Texte sind international urheberrechtlich geschützt. Etwaige Zuwiderhandlungen werden zivil- und strafrechtlich verfolgt.
- Tüm hakları saklıdır. Tüm resimlerin, şemaların ve yazıların kopya hakları uluslararası kanunlarla güvence altına alınmıştır. İhlali durumunda sivil ve hukuki yasa mercii tarafından dava edilecektir.