

Installation Instructions

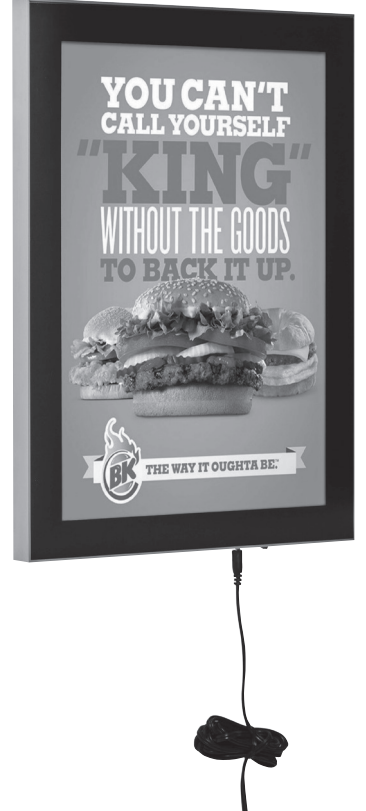
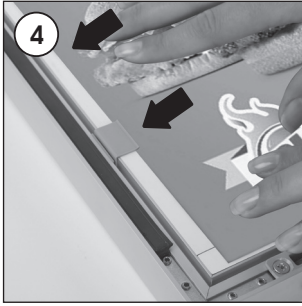
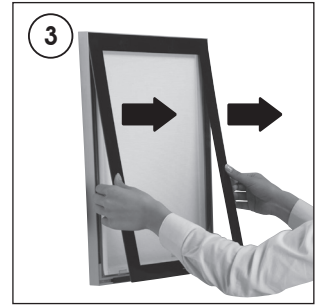
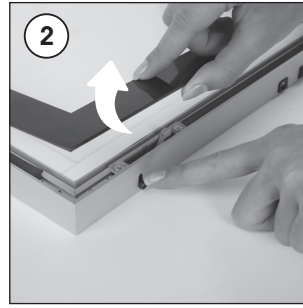
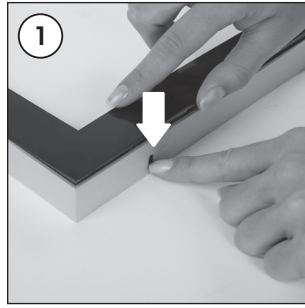
(1008742)

MAGNETIC SMART LEDBOX

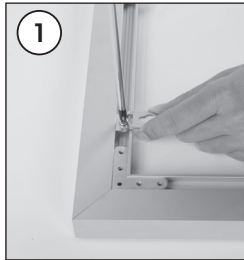


Each product package includes mounting accessories

- 2 x Hanger
- 2 x Bolt M4x6 mm
- 1 x Power Adapter AC100 240V-DC12V-2A-GME24A
- 1 x EU plug
- 4 x Screw
- 4 x Anchor

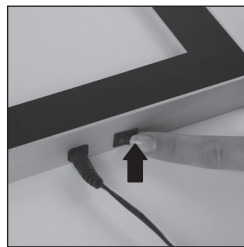
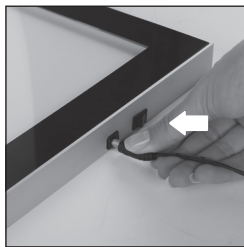


Wall mounting



Horizontal and vertical hanger position

Connection of power supply cable



Caution !

- 1- Do not step on the light panel nor place the heavy object on the light panel.
- 2- Do not pull the cable with excessive force.
- 3- Use correct capacity and voltage of D.C. power supply. Failure to observe this instruction could result in breakdown.
- 4- Do not touch the light panel or electrical devices with wet hand.
Failure to observe this instruction could result in electrical shocks and severe injuries.
- 5- Please do not hang right in front of chimney, air conditioning and ventilation outlets.
- 6- Keep this out of the direct rays of the sun. Failure to observe this instruction could result in color changes of acrylic plate.
- 7- Keep away from fire or severe hot place. Acceptable ambient temperature is max. 35°C.
Failure to observe this instruction could result in shorten the life time and degradation of brightness of LED light source.

- Please inform the order number on the product or on the carton (e.g. 1/110001394-460) to the place that you have made the purchase if any problem with the product occurs.
- Bitte teilen Sie bei jeglichen Problemen, die auf dem Artikel oder auf der Verpackung aufgeführte Auftragsnummer (z.B. 1/110001394-460) Ihrem Händler mit.
- Lüften üründeki herhangli bir sorun için ürünü veya paketin üzerindeki sipariş numarasını (örnek: 1/110001394-460) satın aldığınız yere bildirin.
- All rights reserved. All pictures, figures and writings are secured internationally by copy-right law. Infringements will be sued by civil and legal law.
- Alle Rechte vorbehalten. Alle Bilder, Zeichnungen und Texte sind international urheberrechtlich geschützt. Etwaige Zuwiderhandlungen werden zivil- und strafrechtlich verfolgt.
- Tüm hakları saklıdır. Tüm resimlerin, şemaların ve yazıların kopya hakları uluslararası kanunlarla güvence altına alınmıştır. İhlali durumunda sivil ve hukuki yasa mercii tarafından dava edilecektir.

 **CAUTION! / VORSICHT! / DÝKKAT!**