

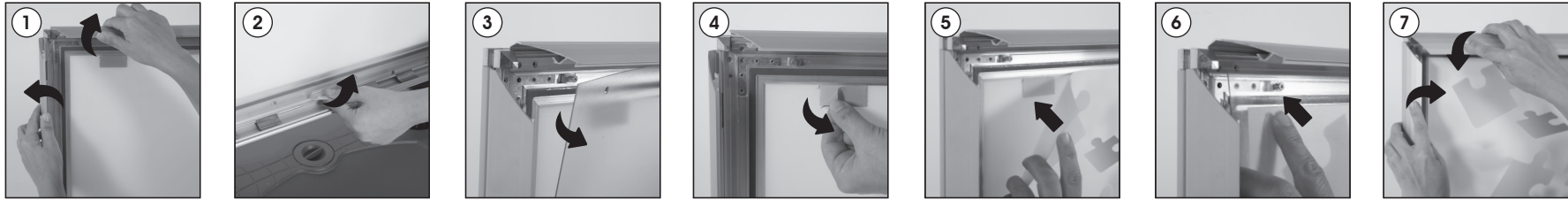
Installation Instructions

(1010214H000)

SWINGPRO PLUS - WINDPRO PLUS



Poster Change

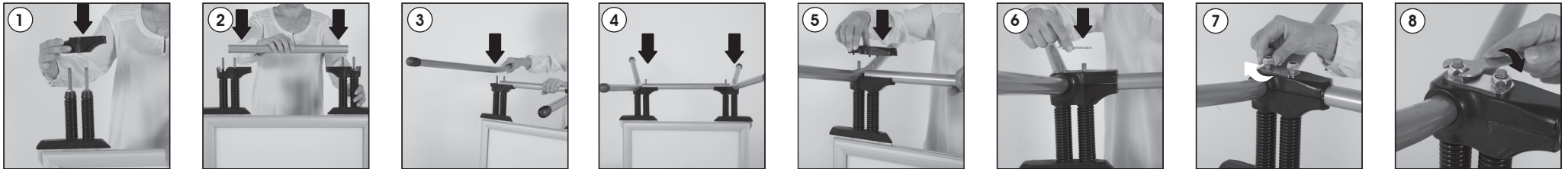


Each product package includes

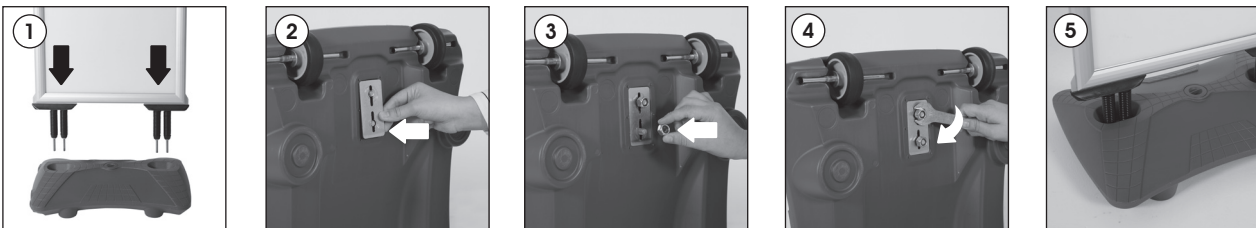
for Frame

- 1 x SwingPro Plus & WindPro Plus Frame
- 2 x PET cover
- 4 x Nut M10
- 1 x 17 spanner

SwingPro Plus Steel Base



WindPro Plus Water Base



Each product package includes

for SwingPro Plus Steel Base

- 2 x SwingPro side feet
- 1 x Feet connection pipe
- 2 x Feet bracket top
- 2 x Feet bracket bottom
- 2 x Washer

for WindPro Plus Water Base

- 1 x Water base
- 2 x Washer

- Please inform the order number on the product or on the carton (e.g. 1/110001394-460) to the place that you have made the purchase if any problem with the product occurs.
- Bitte teilen Sie bei jeglichen Problemen, die auf dem Artikel oder auf der Verpackung aufgeführte Auftragsnummer (z.B.: 1/110001394-460) Ihrem Händler mit.
- Lütfen üründeki herhangi bir sorun için ürünü veya paketin üzerindeki sipariş numarasını (örnek: 1/110001394-460) satın aldığınız yere bildiriniz.
- All rights reserved. All pictures, figures and writings are secured internationally by copy-right law. Infringements will be sued by civil and legal law.
- Alle Rechte vorbehalten. Alle Bilder, Zeichnungen und Texte sind international urheberrechtlich geschützt. Etwaige Zuwiderhandlungen werden zivil- und strafrechtlich verfolgt.
- Tüm hakları saklıdır. Tüm resimlerin, şemaların ve yazıların kopya hakları uluslararası kanunlarla güvence altına alınmıştır. İhlali durumu sivil ve hukuki yasa mercii tarafından dava edilecektir.



WARNING !

- Please use the wrench enclosed and tighten carefully. When tighten too much, the base can breach.
- It is recommend to carry the product with the tool as shown (optional available) , when the base is full with water.

ACHTUNG !

- Zu starkes anziehen der Schrauben, kann zu Rissen am Wassertank führen !
- Im gefüllten Zustand wird der Transport mit der dazugehörigen Transporthilfe (optional erhältlich) empfohlen.

DIKKAT !

- Lütfen kendi anahtarını kullanınız ve kontrollü sıkınız. Fazla sıkılması durumunda bidonda kırılmalar oluşabilir.
- Bidon dolu durumdakken özel taşıma aparatı (opsiyonel) ile taşınması tavsiye edilir.

