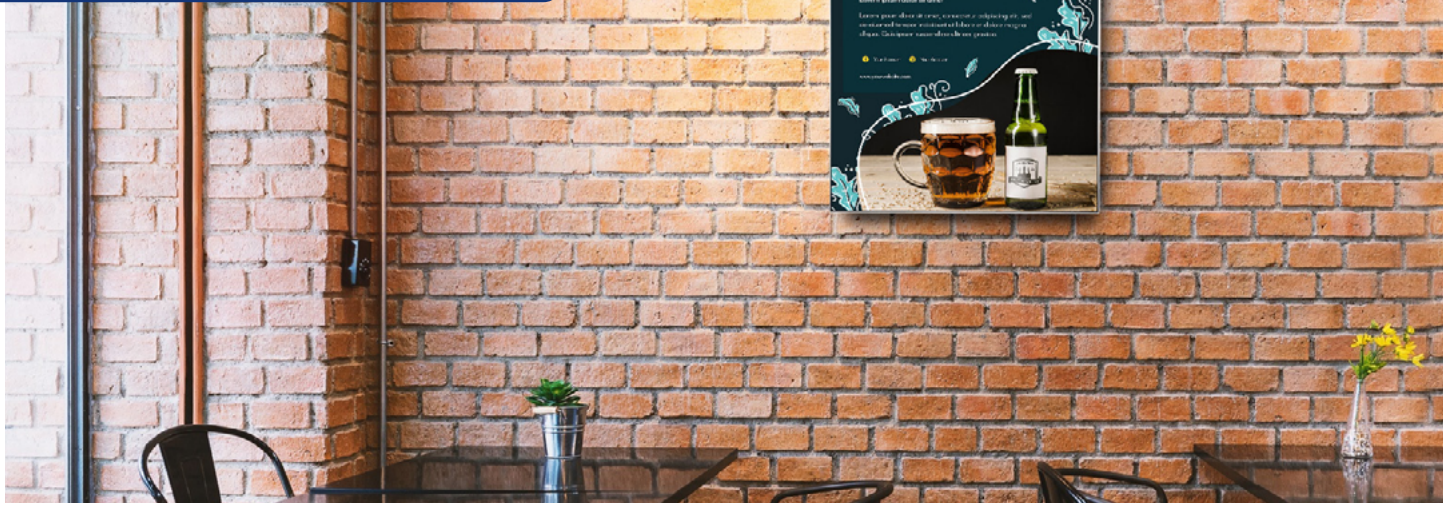


## BAY MAXI SINGLE SIDED

MAXI  
frame



## A NEW ALTERNATIVE! FRAMELESS LOOKING DESIGN FOR FABRIC POSTERS!

It offers a fresh new look to today's display atmosphere which is an alternative to frame systems, Banners, Pop-Ups by applying a printed fabric's installation into the Maxi profile with a sewed or taped nylon strip. The product is a stunning combination of Aluminium and Digital Printing Machines where they unite with a fabric. The attractive point of the product is when it is looked at the front side, you are unable to see the Aluminium Parts of the frame which makes it look frameless.

## KEY SELECTION ATTRIBUTES

- \* A very new and fresh looking, single-sided, wall hanging, Bay Maxi Frame system, combining aluminium Ace Profile and sewed or nylon strip for application of printed fabric posters.
- \* One of the most attractive frame designs in the market with frameless look when viewed from the front side.
- \* Suitable for INDOOR applications with A1, A2, A3, A4, B1, B2, 500x1000mm, 1000x1000mm, 1000x1500mm and 1000x2000mm poster sizes in portrait and landscape position.
- \* Bay Maxi Frames can be ordered in standard sizes. They can also be ordered in special lengths and parts as semi products.
- \* Natural silver-anodized in standard and various RAL colors available with antimicrobial powder coating. Subject to MOQ.
- \* One set includes a single sided 8mm Ace Profile frame with 32 mm depth and 4mm channel thickness; 36x19mm aluminium H-profile for 1000mm and more wider frame sizes; 3mm clear nylon strips; corner connectors and cleats for connecting H-profile.
- \* Hang by using the assembling holes.
- \* Fabric is not included in the original pack.
- \* Recommended fabric thickness for digital printing is 0,5mm. Thickness of the channel is 4mm. Thickness of nylon strip is 3mm. The pull sticker in 0,5mm thickness must be sewed on the fabric to take out the poster from channels.
- \* 13mm on each side of the fabric into Maxi Profiles (in total 26mm on each Fabric Poster) is not seen on the poster. Please arrange accordingly.
- \* Additional print shares suggested for Maxi Frame's Fabric Posters: 28mm between 200-750mm, 20mm between 750-1500mm, 15mm between 1500-3000mm. These values might vary according to the fabric used.
- \* Profiles and connector parts for the required sizes are packed unassembled in a single box with an easy mounting instruction sheet. Fixing tools are included in each frame.



## COLOURS IN STOCK



Silver

## SUITABLE FOR

Bay Maxi Single Sided can be used for INDOOR applications, for signage needs in many locations like shopping centers, markets, groceries, hotels, offices airports, shops and stores, hospitals, schools, apartments, banks, car dealers, restaurants, telecom companies, insurance companies, libraries, museums, travel agencies and many more.

## WATCH VIDEO



Watch video at our website [www.mtdisplays.com](http://www.mtdisplays.com)

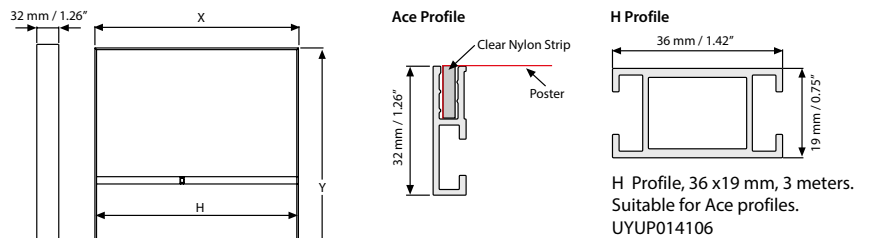
## FEATURES



## EXPLODED VIEW



## TECHNICAL DRAWING



### Application of nylon strip by sew-on process



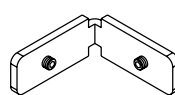
### Application of nylon strip by double sided tape



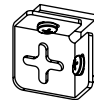
## ARTICLES

ARTICLE	EXTERNAL (x-y)	H (mm)	H (Pcs)	WEIGHT	PACKING SIZE
				WITH PACKING	*W X H X D
UMFB0000A4	210 X 297 mm	-	-	0,560 kg	60 X 350 X 50 mm
UMFB0000A3	297 X 420 mm	-	-	0,710 kg	60 X 470 X 50 mm
UMFB0000A2	420 X 594 mm	-	-	0,900 kg	60 X 650 X 50 mm
UMFB0000A1	594 X 841 mm	-	-	1,230 kg	60 X 890 X 50 mm
UMFB0000A0	841 X 1189 mm	-	-	1,690 kg	60 X 1240 X 50 mm
UMFB0000B2	500 X 700 mm	-	-	1,030 kg	60 X 750 X 50 mm
UMFB0000B1	700 X 1000 mm	-	-	1,430 kg	60 X 1120 X 50 mm
UMFB0000B0	1000 X 1400 mm	983 mm	1	2,480 kg	60 X 1500 X 50 mm
UMFB000510	500 X 1000 mm	-	-	1,210 kg	60 X 1120 X 50 mm
UMFB001010	1000 X 1000 mm	-	-	1,530 kg	60 X 1050 X 50 mm
UMFB001015	1000 X 1500 mm	983 mm	1	2,800 kg	60 X 1550 X 50 mm
UMFB001020	1000 X 2000 mm	983 mm	1	3,100 kg	60 X 2050 X 50 mm
UMFB000017	11" X 17"	-	-	1.565 lbs	2.36" X 18.90" X 1.97"
UMFB000018	18" X 24"	-	-	1.807 lbs	2.36" X 25.98" X 1.97"
UMFB000022	22" X 28"	-	-	2.535 lbs	2.36" X 30.31" X 1.97"
UMFB000024	24" X 36"	-	-	2.888 lbs	2.36" X 37.99" X 1.97"
UMFB000036	36" X 48"	-	-	3.858 lbs	2.36" X 50" X 1.97"
UMFB000046	40" X 60"	39.33"	1	6.172 lbs	2.36" X 61.01" X 1.97"

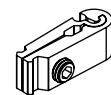
## COMPONENTS OF MAXI FRAMES



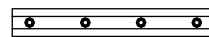
Straight Cleat for H profile. Packed by 8. UYUP412310



Square Corner Connector for BAY Maxi. Packed by 10. UYUP412270



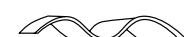
Straight Cleat for H profile. Packed by 8. / UYUP412291



Article: UYUP412320  
Flat Connector for Bay Maxi frame profile. Packed in 10.



Clear Nylon Strip  
13 x 3 mm, 100 meters. UYUP460235



Clear Nylon Strip with tape  
13 x 3 mm, 50 meters. UYUP460220



T: +90 850 433 67 85 / [info@mtdisplays.com](mailto:info@mtdisplays.com) / [www.mtdisplays.com](http://www.mtdisplays.com)

# PHYSICAL DATA

## Material

8mm aluminium profile frame with 32mm depth, 36x19mm aluminium H-profile, clear nylon strips, metal corner connectors and cleats.

## Poster Material & Thickness

Recommended fabric thickness for digital printing is 0,5mm. Thickness of the channel is 4mm. Thickness of nylon strip is 3mm. The pull sticker in 0,5mm thickness must be sewed on the fabric to take out the poster from channels.

## Surface Finish

Natural silver-anodized in standard and various RAL colors available with antimicrobial powder coating. Subject to MOQ. Call for custom color requests.

## Storage Conditions

Goods should be stored at 0° to 25°C in a dry place. Store in the original package.

## Recycled Content

Up to 78% recycled content used.

## Warranty

All products are guaranteed for 3 years by MT Displays with below conditions:  
[Warranty Conditions](#)

## Installation Considerations

Profiles and connector parts of Bay Maxi Single Sided for the required sizes are packed unassembled in a single box with an easy mounting instruction sheet. Fixing tools are included in each frame. One set includes a single sided 8mm Ace Profile frame with 32 mm depth and 4mm channel thickness; 36x19mm aluminium H-profile for 1000mm and more wider frame sizes; 3mm clear nylon strips; corner connectors and cleats for connecting H-profile. Hang by using the assembling holes. Fabric is not included in the original pack. 13mm on each side of the fabric into Maxi Profiles (in total 26mm on each Fabric Poster) is not seen on the poster. Please arrange accordingly. Additional print shares suggested for Maxi Frame's Fabric Posters: 28mm between 200-750mm, 20mm between 750-1500mm, 15mm between 1500-3000mm. These values might vary according to the fabric used. Bay Maxi Frames

can be ordered in standard sizes. They can also be ordered in special lengths and parts as semi products.

## Design Considerations

A very new and fresh looking, single-sided, wall hanging, Bay Maxi Frame system, combining aluminium Ace Profile and sewed or nylon strip for application of printed fabric posters. One of the most attractive frame designs in the market with frameless look when viewed from the front side. Suitable for INDOOR applications with A1, A2, A3, A4, B1, B2, 500x1000mm, 1000x1000mm, 1000x1500mm and 1000x2000mm poster sizes in portrait and landscape position.

## Cleaning and Disinfecting

Clean your displays, with damp microfiber clothes, rinsed with simply water or warm, soapy or gentle shampooed water. Avoid using vinegar, abrasive, acidic, alcohol-based or heavy cleaners or cleaners containing Ammonia. Only after cleaning the product, if needed, simply apply disinfectant or sanitizer that is in compliance with your local guidelines and regulations.

# PRINT TEMPLATES

## Bay Maxi - A4

Document Size: 270x357 mm (Includes Bleeds)  
Finished Size: A4 (210 x 297 mm) [Print](#)

## Bay Maxi - A3

Document Size: 357 x 480 mm (Includes Bleeds)  
Finished Size: A3 (297 x 420 mm) [Print](#)

## Bay Maxi - A2

Document Size: 480 x 654 mm (Includes Bleeds)  
Finished Size: A2 (420 x 594 mm) [Print](#)

## Bay Maxi - A1

Document Size: 654 x 901 mm (Includes Bleeds)  
Finished Size: A1 (594 x 841 mm) [Print](#)

## Bay Maxi - A0

Document Size: 901 x 1249 mm (Includes Bleeds)  
Finished Size: A0 (841 x 1189 mm) [Print](#)

## Bay Maxi - B2

Document Size: 560 x 760 mm (Includes Bleeds)  
Finished Size: B2 (500 x 700 mm) [Print](#)

## Bay Maxi - B1

Document Size: 760 x 1060 mm (Includes Bleeds)  
Finished Size: B1 (700 x 1000 mm) [Print](#)

## Bay Maxi - B0

Document Size: 1060 x 1460 mm (Includes Bleeds)  
Finished Size: B0 (1000 x 1400 mm) [Print](#)

## Bay Maxi - 500 x 1000 mm

Document Size: 560 x 1060 mm (Includes Bleeds)  
Finished Size: 500 x 1000 mm [Print](#)

## Bay Maxi - 1000 x 1000 mm

Document Size: 1060 x 1060 mm (Includes Bleeds)  
Finished Size: 1000 x 1000 mm [Print](#)

## Bay Maxi - 1000 x 1500 mm

Document Size: 1060 x 1560 mm (Includes Bleeds)  
Finished Size: 1000 x 1500 mm [Print](#)

## Bay Maxi - 1000 x 2000 mm

Document Size: 1060 x 2060 mm (Includes Bleeds)  
Finished Size: 1000 x 2000 mm [Print](#)

## Bay Maxi - 11"x17"

Document Size: 13.36" x 19.36" (Includes Bleeds)  
Finished Size: 11"x17" (279.4 x 431.8 mm)

## Bay Maxi - 18"x24"

Document Size: 20.36" x 26.36" (Includes Bleeds)  
Finished Size: 18"x24" (457.2x609.6 mm)

## Bay Maxi - 22"x28"

Document Size: 24.36" x 30.36" (Includes Bleeds)  
Finished Size: 22"x28" (558.8x711.2 mm)

## Bay Maxi - 24"x36"

Document Size: 26.36" x 38.36" (Includes Bleeds)  
Finished Size: 24"x36" (609.6x914.4 mm)

## Bay Maxi - 36"x48"

Document Size: 38.36" x 50.36" (Includes Bleeds)  
Finished Size: 36"x48" (914.4x1219 mm)

## Bay Maxi - 40"x60"

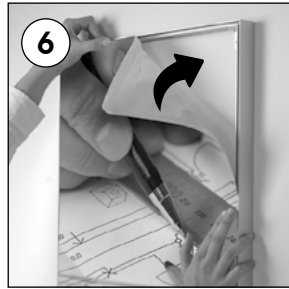
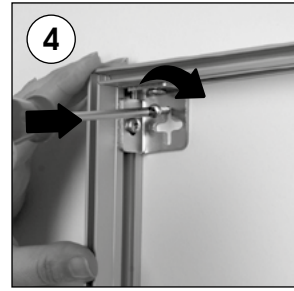
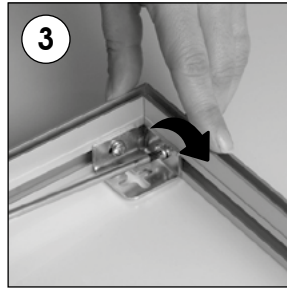
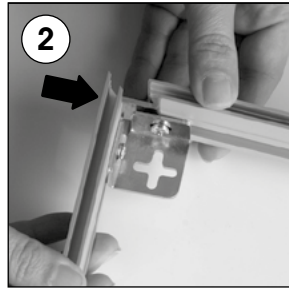
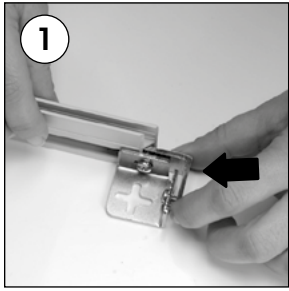
Document Size: 42.36" x 62.36" (Includes Bleeds)  
Finished Size: 40"x60" (1016x1524 mm)



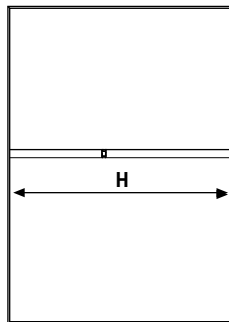
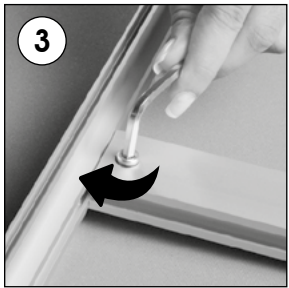
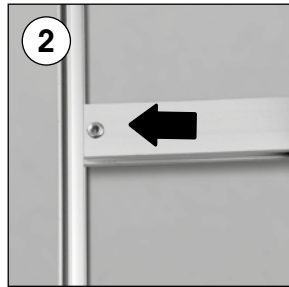
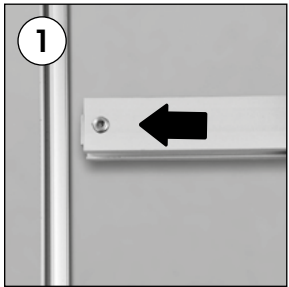


# INSTALLATION INSTRUCTIONS

Ace Profile / Bay Maxi / 1004752



## Assembly of H profile



Assembly of H profile		
Poster	H (Size)	H (Pcs)
1000 X 1400 mm	983 mm	1
1000 X 1500 mm	983 mm	1
1000 X 2000 mm	983 mm	1

- Please inform the order number on the product or on the carton (e.g. 1/110001394-460) to the place that you have made the purchase if any problem with the product occurs.
- All rights reserved. All pictures, figures and writings are secured internationally by copy-right law. Infringements will be sued by civil and legal law.

This technical sheet's contents are all subject to update and modification at MT Displays' exclusive discretion. There is nothing official about this document. For final and legally binding information, please get in touch with the sales staff at MT Displays.



T: +90 850 433 67 85 / info@mtdisplays.com / www.mtdisplays.com