

## BESY BUY LEDBOX DOUBLE SIDED



### LONG LASTING AND COST SAVING AD SIGNS WITH HOMOGENOUS ILLUMINATION

Very slim double sided Best Buy LEDbox with 30mm thickness is an ideal choice for wide range of indoor applications. High illumination is achieved by specially treated acrylic and provides a homogenous illumination. Homogenous and bright Best Buy LEDbox will get the attention of consumers easily wherever it is mounted.

### KEY SELECTION ATTRIBUTES

- \* Double-sided, ceiling hanging, edge-lit lightbox with easy and slim snap open frame and long lasting LED technology bulbs.
- \* One of the thinnest double-sided lightboxes in the market with 30mm depth.
- \* Suitable for A0, A1, A2, A3, A4, B1, B2, 11"x17", 20"x30", 22"x28", 24"x36", 30"x40" size posters in portrait and landscape position.
- \* Suitable for INDOOR applications for high-traffic areas, because it doesn't obstruct walking paths.
- \* High illumination is achieved by specially treated acrylic and provides homogenous illumination.
- \* LED bulbs are not seen from outside, since they are embedded in sides of the frame.
- \* Translucent poster material should be used for printing the signage.
- \* Gives an impressive effect to grab the passers-by.
- \* Besides being less expensive, saves up to 60% energy costs, resulting in cost saving both initially and after overall usage.
- \* Supplied with quality certificates and CE/UL PAT test reports passed.
- \* Natural silver-anodized in standard and various RAL colors available with antimicrobial powder coating.
- \* One set includes a double-sided 25mm snap open frame with 30mm depth and embedded LED bulbs; specially treated acrylic non-glare PET lens to diffuse light across graphics; 2 anti-reflex PET poster covers; a standard hanging kit composed of 2 pieces of 2 meters long wire cables and 2 ceiling hangers; 2 M5 hangers, 2 screws, 2 anchors, 1 power adapter (12V-2A) with 3,5 meter long cable and 1 EU Plug. UK and US plugs are available, should be specified with order.
- \* Optional dimmer is available. Adjusting the light from dark to max lux of LED illuminated frame. Simply jack the dimmer in frame and then into power supply.
- \* Easy to load and re-load posters, with easy snap open framing. Simply snap up all four sides of the frame and easily insert your poster or take out.
- \* Packed unassembled with an easy mounting instruction sheet & fixing set
- \* Has no switch, supplied with built-in powersupply, helping long product life.
- \* For using LED frame 24 hours in 7 days, please ask for special 7/24 power supplies.



Portrait



Landscape



## COLOURS IN STOCK



Silver

## COLOUR OPTIONS

Black Anodised

Silver Anodised

Black - RAL 9005

White - RAL 9003

Red- RAL 3020

Blue - RAL 5002

Green - RAL 6029

Yellow - RAL 1021

## CORNER TYPES

Mitred corner

## WATCH VIDEO



Watch video at our website  
www.mtdisplays.com

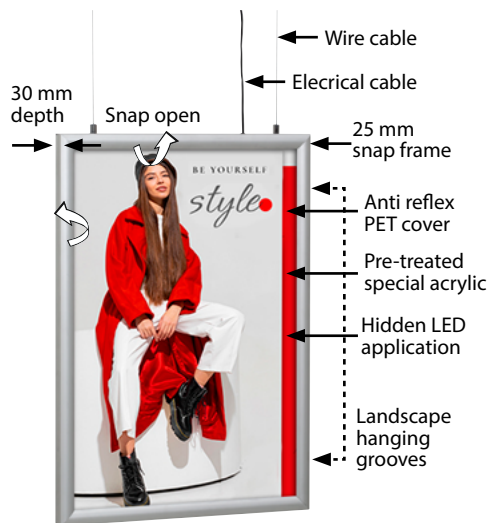
## SUITABLE FOR

Double Sided Best Buy LEDboxes can be used for a wide range of INDOOR applications, for signage needs in many locations like retail point-of-purchase, tradeshow displays, movie theatres, sports facilities, shopping malls, markets, groceries, hotels, airports, shops and stores, hospitals, restaurants, halls, meeting, rooms, gas stations, casinos, and more.

## FEATURES

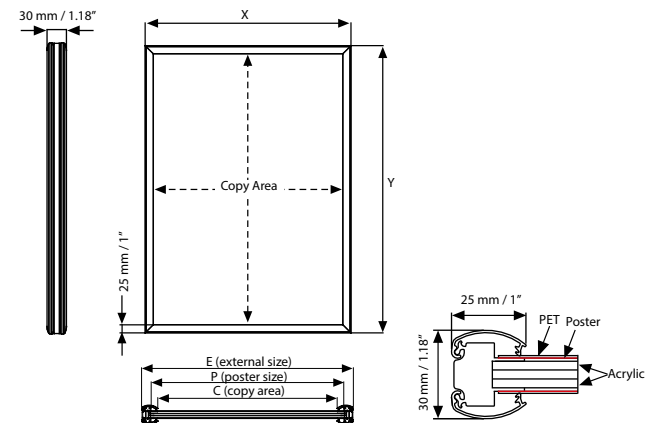


## EXPLODED VIEW



Standard hanging kit for all sizes: 2 meters x 2 pcs wire cable and 2 ceiling hangers.

## TECHNICAL DRAWING



## ARTICLES

ARTICLE	EXTERNAL (x-y)	POSTER SIZE	COPY	LIGHTING	WEIGHT	PACKING SIZE
					WITH PACKING	*W X H X D
ULB25CN0A4	240 X 327 mm	210 X 297 mm	189 X 276 mm	2800-3000 LUX	1,530 kg	255 X 435 X 40 mm
ULB25CN0A3	327 X 450 mm	297 X 420 mm	276 X 399 mm	2400-2600 LUX	2,390 kg	345 X 520 X 40 mm
ULB25CN0A2	450 X 624 mm	420 X 594 mm	399 X 573 mm	2100-2300 LUX	3,970 kg	465 X 695 X 40 mm
ULB25CN0A1	624 X 871 mm	594 X 841 mm	573 X 820 mm	1800-2000 LUX	7,410 kg	640 X 960 X 40 mm
ULB25CN0A0	871 X 1219 mm	841 X 1189 mm	820 X 1168 mm	1200-1400 LUX	13,680 kg	885 X 1290 X 40 mm
ULB25CN0B2	530 X 730 mm	500 X 700 mm	479 X 679 mm	2000-2200 LUX	5,170 kg	545 X 800 X 40 mm
ULB25CN0B1	730 X 1030 mm	700 X 1000 mm	679 X 979 mm	1600-1800 LUX	10,130 kg	745 X 1100 X 40 mm
ULB25CN017	12.20" X 18.19"	11" X 17"	10.20" X 16.18"	2400-2600 LUX	5.180 lbs	12.80" X 21.06" X 1.38"
ULB25CN022	23.19" X 29.21"	22" X 28"	21.18" X 27.20"	1900-2100 LUX	12.698 lbs	23.82" X 33.27" X 1.38"
ULB25CN023	21.18" X 31.18"	20" X 30"	19.17" X 29.17"	2000-2200 LUX	12.456 lbs	21.85" X 33.86" X 1.38"
ULB25CN024	25.20" X 37.20"	24" X 36"	23.19" X 35.20"	1800-2000 LUX	18.783 lbs	25.79" X 39.96" X 1.38"
ULB25CN034	31.18" X 41.18"	30" X 40"	29.17" X 39.17"	1600-1800 LUX	24.647 lbs	31.89" X 43.90" X 1.38"

## OPTIONAL ACCESSORIES



Optional dimmer to go with LED illuminated frame.. Simply jack the dimmer in frame and then into powersupply. It adjust the light from dark to max lux of LED illuminated frame. UYUP445550



T: +90 850 433 67 85 / info@mtdisplays.com / www.mtdisplays.com

## PHYSICAL DATA

### Material

25mm aluminium profile snap open frame with 30 mm depth, PET anti-reflex poster cover, acrylic backing, LED bulbs.

### Poster Material & Thickness

0,10 – 0,20 mm for standard product. Max poster thickness 2 mm. Any non-standard poster thicknesses should be indicated with order.

### Surface Finish

Natural silver-anodized in standard and various RAL colors available with antimicrobial powder coating. Call for custom color requests.

### Recycled Content

Up to 78% recycled content used.

### Warranty

All products are guaranteed for 3 years by MT Displays with below conditions:

[Warranty Conditions](#)

### Storage Conditions

Goods should be stored at 0° to 25°C in a dry place. Store in the original package.

### Installation Considerations

Best Buy LEDbox Double Sided is packed unassembled with an easy mounting instruction sheet & fixing set. Supplied with quality certificates and CE/UL PAT test reports passed. One set includes a double-sided 25mm snap open frame with 30mm depth and embedded LED bulbs; specially treated acrylic non-glare PET lens to diffuse light across graphics; 2 anti-reflex PET poster covers; a standard hanging kit composed of 2 pieces of 2 meters long wire cables and 2 ceiling hangers; 2 M5 hangers, 2 screws, 2 anchors, 1 power adapter (12V-2A) with 3,5 meter long cable and 1 EU Plug. UK and US plugs are available, should be specified with order. Has no switch, supplied with built-in powersupply, helping long product life. Optional dimmer is available, adjusting the light from dark to max lux of LED illuminated frame. For using LED frame 24 hours in 7 days, please ask for special 7/24 power supplies. Suitable for maximum 35°C indoor temperature (incl. daily sunny hours.) It should be assembled 30 cm from the window.

### Design Considerations

Double-sided, ceiling hanging, edge-lit lightbox with easy and slim snap open frame and long lasting LED technology bulbs. One of the thinnest double-sided lightboxes in the market with 30mm depth. Suitable for A0, A1, A2, A3, A4, B1,

B2, 11"x17", 20"x30", 22"x28", 24"x36", 30"x40" size posters in portrait and landscape position. Suitable for INDOOR applications for high-traffic areas, because it doesn't obstruct walking paths. High illumination is achieved by specially treated acrylic and provides homogenous illumination. LED bulbs are not seen from outside, since they are embedded in sides of the frame. Translucent poster material should be used for printing the signage. Gives an impressive effect to grab the passers-by. Besides being less expensive, saves up to 60% energy costs, resulting in cost saving both initially and after overall usage. Easy to load and re-load posters, with easy snap open framing. Simply snap up all four sides of the frame and easily insert your poster or take out. Suitable for silk screen printing, max. letter height is 15 mm.

### Cleaning and Disinfecting

Clean your displays, with damp microfiber clothes, rinsed with simply water or warm, soapy or gentle shampooed water. Avoid using vinegar, abrasive, acidic, alcohol-based or heavy cleaners or cleaners containing Ammonia. Only after cleaning the product, if needed, simply apply disinfectant or sanitizer that is in compliance with your local guidelines and regulations.

## PRINT TEMPLATES

### Best Buy LEDbox Double Sided - A4

Document Size: 220 x 307 mm (Includes Bleeds)  
Finished Size: A4 (210 x 297 mm) [Print](#)

### Best Buy LEDbox Double Sided - A3

Document Size: 307 x 430 mm (Includes Bleeds)  
Finished Size: A3 (297 x 420 mm) [Print](#)

### Best Buy LEDbox Double Sided - A2

Document Size: 430 x 604 mm (Includes Bleeds)  
Finished Size: A2 (420 x 594 mm) [Print](#)

### Best Buy LEDbox Double Sided - A1

Document Size: 604 x 851 mm (Includes Bleeds)  
Finished Size: A1 (594 x 841 mm) [Print](#)

### Best Buy LEDbox Double Sided - A0

Document Size: 851 x 1199 mm (Includes Bleeds)  
Finished Size: A0 (841 x 1189 mm) [Print](#)

### Best Buy LEDbox Double Sided - B2

Document Size: 510 x 710 mm (Includes Bleeds)  
Finished Size: B2 (500 x 700 mm) [Print](#)

### Best Buy LEDbox Double Sided - B1

Document Size: 710 x 1010 mm (Includes Bleeds)  
Finished Size: B1 (700 x 1000 mm) [Print](#)

### Best Buy LEDbox Double Sided - 11"x17"

Document Size: 11.4" x 17.4" (Includes Bleeds)  
Finished Size: 11"x17" (279.4x431.8 mm) [Print](#)

### Best Buy LEDbox Double Sided - 20"x30"

Document Size: 20.4" x 30.4" (Includes Bleeds)  
Finished Size: 20"x30" (508x762 mm) [Print](#)

### Best Buy LEDbox Double Sided - 22"x28"

Document Size: 22.4" x 28.4" (Includes Bleeds)  
Finished Size: 22"x28" (558.8x711.1 mm) [Print](#)

### Best Buy LEDbox Double Sided - 24"x36"

Document Size: 24.4" x 36.4" (Includes Bleeds)  
Finished Size: 24"x36" (609.6x914.4 mm) [Print](#)

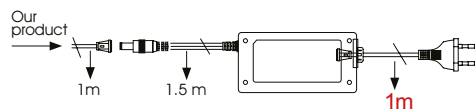
### Best Buy LEDbox Double Sided - 30"x40"

Document Size: 30.4" x 40.4" (Includes Bleeds)  
Finished Size: 30"x40" (762x1016 mm) [Print](#)

## ILLUMINATED PRODUCTS TECHNICAL MANUAL

### POWER SUPPLY

- 12 V DC
- Complete with power supply
- 2 year guaranteed
- 7/16 use
- If 7/24 use required, please order individually.



### TECHNICAL SPECIFICATION

ARTICLE	POSTER	ACRYLIC THICKNESS	ILLUMINATION	POWER CONSUMPTION	POWER SUPPLY RECOMMENDED
ULB25CN0A4	210 X 297 mm	3 mm	2800-3000 LUX	9.5 W / 0.79 A	1 A
ULB25CN0A3	297 X 420 mm	3 mm	2400-2600 LUX	14 W / 1.15 A	2 A
ULB25CN0A2	420 X 594 mm	3 mm	2100-2300 LUX	20 W / 1.66 A	2 A
ULB25CN0A1	594 X 841 mm	4 mm	1800-2000 LUX	28.5 W / 2.38 A	3 A
ULB25CN0A0	841 X 1189 mm	4 mm	1200-1400 LUX	40.5 W / 3.39 A	4 A
ULB25CN0B2	500 X 700 mm	3 mm	2000-2200 LUX	24 W / 2 A	3 A
ULB25CN0B1	700 X 1000 mm	4 mm	1600-1800 LUX	35 W / 2.9 A	4 A
ULB25CN017	280 X 432 mm	3 mm	2400-2600 LUX	16.6 W / 1.22 A	2 A
ULB25CN022	559 X 712 mm	3 mm	1900-2100 LUX	24 W / 2 A	3 A
ULB25CN023	508 X 762 mm	3 mm	2000-2200 LUX	26 W / 2.16 A	3 A
ULB25CN024	610 X 915 mm	4 mm	1800-2000 LUX	31 W / 2.6 A	3 A
ULB25CN034	762 X 1016 mm	4 mm	1600-1800 LUX	36 W / 3.02 A	4 A

### HANGER



2 wall hangers are standard in each product. Moving hangers let the mounting in portrait and landscape position.

### LED FEATURES (Duris E3)

Viewing angle at 50 % IV: 120°  
Color: 2700 K - 6500 K (warm, neutral and cool white)  
CRI: Min. 80  
Luminous Flux: Typ. 30 lm @ 5000 K  
Luminous efficacy: Typ. 153 lm/W @ 5000 K  
Lumen Maintenance: Testing according to IESNA LM-80 in progress  
Life Time : 50.000 Hours  
Colour: 5700 K -6500 K (White)\*  
\*For special inquired colour is available in 2700 K -6500 K



### ASSEMBLY SHEET

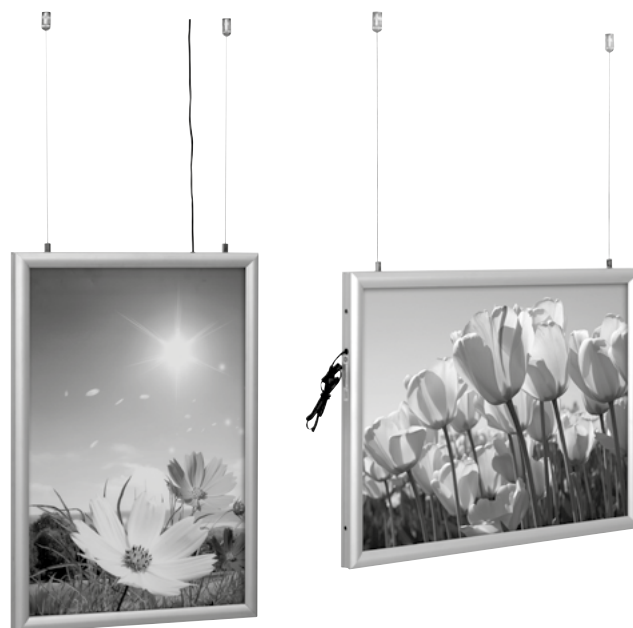
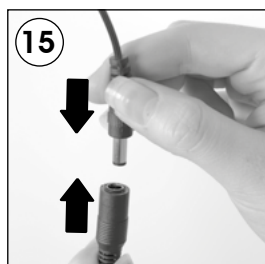
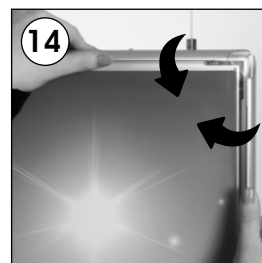
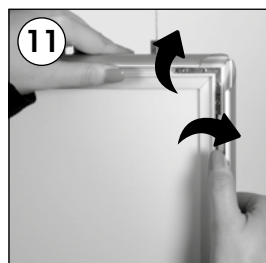
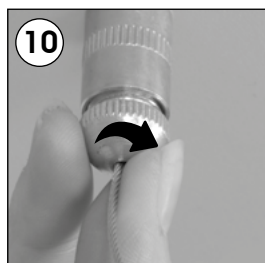
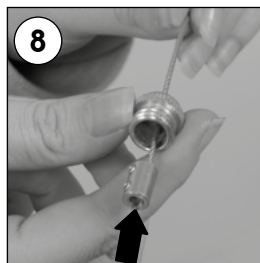
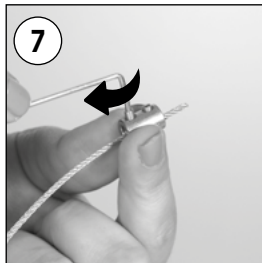
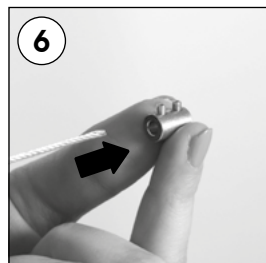
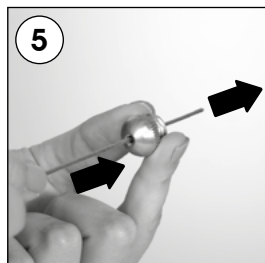
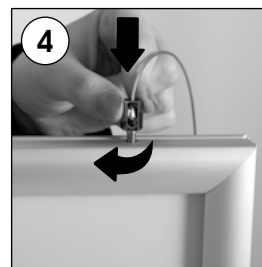
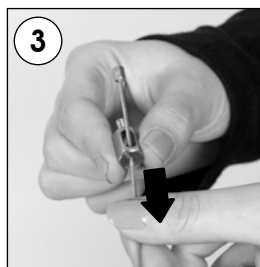
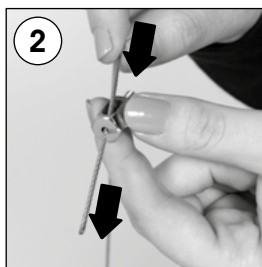
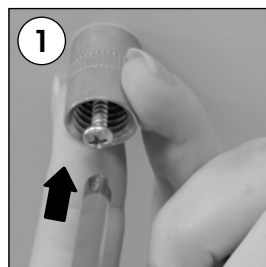


# INSTALLATION INSTRUCTIONS

## Best Buy LEDbox Double Sided / 1010010H000

### Each product includes

- 1 x EU plug
- 1 x Jack cable
- 2 x Wire cable 2mt
- 2 x Ceiling hanger set
- 2 x Hanger M5
- 1 x Power supply 12V
- 2 x Screw
- 2 x Anchor



### Caution !

- 1- Do not step on the light panel nor place the heavy object on the light panel.
- 2- Do not pull the cable with excessive force.
- 3- Use correct capacity and voltage of D.C. power supply. Failure to observe this instruction could result in breakdown.
- 4- Do not touch the light panel or electrical devices with wet hand. Failure to observe this instruction could result in electrical shocks and severe injuries.
- 5- Do not subject this light panel to outdoor, high humid and vaporized area. Failure to observe this instruction could result in breakdown.
- 6- Keep this out of the direct rays of the sun. Failure to observe this instruction could result in color changes of acrylic plate.
- 7- Keep away from fire or severe hot place. Acceptable ambient temperature is max.35°C Failure to observe this instruction could result in shorten the life time and degradation of brightness of LED light source.

• Please inform the order number on the product or on the carton (e.g. 1/110001394-460) to the place that you have made the purchase if any problem with the product occurs.

• All rights reserved. All pictures, figures and writings are secured internationally by copy-right law. Infringements will be sued by civil and legal law.

This technical sheet's contents are all subject to update and modification at MT Displays' exclusive discretion. There is nothing official about this document. For final and legally binding information, please get in touch with the sales staff at MT Displays.



T: +90 850 433 67 85 / info@mtdisplays.com / www.mtdisplays.com