

BESY BUY LEDBOX SINGLE SIDED



LONG LASTING AND COST SAVING AD SIGNS WITH HOMOGENOUS ILLUMINATION

Very slim single sided Best Buy LEDbox with 18 mm thickness is an ideal choice for wide range of indoor applications. High illumination is achieved by specially treated acrylic and provides a homogenous illumination. Homogenous and brilliant Best Buy LEDbox will get the attention of consumers easily wherever it is mounted.

KEY SELECTION ATTRIBUTES

- Single-sided, wall hanging, edge-lit lightbox with easy and slim snap open frame and long lasting LED technology bulbs.
- One of the thinnest lightboxes in the market with 18mm depth.
- Suitable for A0, A1, A2, A3, A4, B1, B2, 11"x17", 20"x30", 24"x36", 30"x40" size posters in portrait and landscape position.
- Suitable for INDOOR applications for high-traffic areas, because it doesn't obstruct walking paths.
- High illumination is achieved by specially treated acrylic and provides homogenous illumination.
- LED bulbs are not seen from outside, since they are embedded in sides of the frame.
- Translucent poster material should be used for printing the signage.
- Gives an impressive effect to grab the passers-by.
- Besides being less expensive, saves up to 60% energy costs, resulting in cost saving both initially and after overall usage.
- Supplied with quality certificates and CE/UL PAT test reports passed.
- Black and natural silver-anodized in standard and various RAL colors available with antimicrobial powder coating.
- One set includes a single sided 25mm snap open frame with 18mm depth and embedded LED bulbs, specially treated acrylic non-glare PET lens to diffuse light across graphics, 1 anti-reflex PET poster cover, 2 wall hangers, 4 screws, 4 anchors, 1 power adapter (12V-2A), 3,5 meter long cable and 1 EU Plug. UK and US plugs are available, should be specified with order.
- Optional dimmer is available. Adjusting the light from dark to max lux of LED illuminated frame.
- Easy to load and re-load posters, with easy snap open framing. Simply snap up all four sides of the frame and easily insert your poster or take out.
- Packed unassembled with an easy mounting instruction sheet & fixing set
- Has no switch, supplied with built-in powersupply, helping long product life.
- For using LED frame 24 hours in 7 days, please ask for special 7/24 power supplies.



Silver



Black

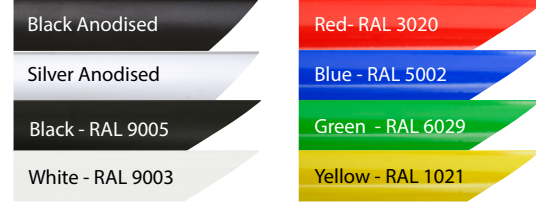


COLOURS IN STOCK



Silver Black

COLOUR OPTIONS



CORNER TYPES



WATCH VIDEO



Watch video at our website
www.mtdisplays.com

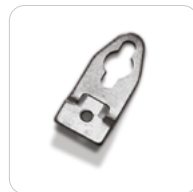
SUITABLE FOR

Best Buy LEDbox can be used for a wide range of INDOOR applications, for signage needs in many locations like retail point-of-purchase, tradeshow displays, movie theatres, sports facilities, shopping malls, markets, groceries, hotels, airports, shops and stores, hospitals, restaurants, halls, meeting, rooms, gas stations, casinos, and more.

FEATURES

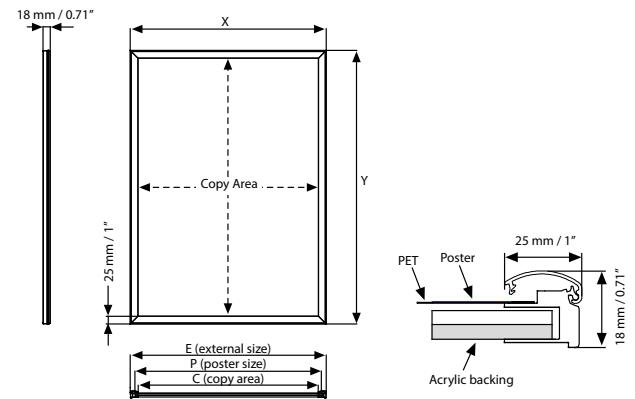


EXPLODED VIEW



2 wall hangers are standard in each product. Moving hangers let the mounting in portrait and landscape position.

TECHNICAL DRAWING



ARTICLES

SILVER	BLACK	EXTERNAL (x-y)	POSTER SIZE	COPY	LIGHTING	WEIGHT	PACKING SIZE
						WITH PACKING	*W X H X D
ULB25TN0A4	ULB25TB0A4	240 X 327 mm	210 X 297 mm	189 X 276 mm	3000-3300 LUX	1,320 kg	255 X 435 X 35 mm
ULB25TN0A3	ULB25TB0A3	327 X 450 mm	297 X 420 mm	276 X 399 mm	2800-3000 LUX	1,880 kg	345 X 520 X 35 mm
ULB25TN0A2	ULB25TB0A2	450 X 624 mm	420 X 594 mm	399 X 573 mm	2400-2700 LUX	2,830 kg	465 X 695 X 35 mm
ULB25TN0A1	ULB25TB0A1	624 X 871 mm	594 X 841 mm	573 X 820 mm	1900-2100 LUX	5,000 kg	640 X 960 X 35 mm
ULB25TN0A0	ULB25TB0A0	871 X 1219 mm	841 X 1189 mm	820 X 1168 mm	1500-1800 LUX	8,940 kg	885 X 1290 X 35 mm
ULB25TN0B2	ULB25TB0B2	530 X 730 mm	500 X 700 mm	479 X 679 mm	2100-2400 LUX	3,550 kg	545 X 800 X 35 mm
ULB25TN0B1	ULB25TB0B1	730 X 1030 mm	700 X 1000 mm	679 X 979 mm	1700-2000 LUX	6,580 kg	745 X 1100 X 35 mm
ULB25TN017	ULB25TB017	12.20" X 18.19"	11" X 17"	10.20" X 16.18"	2800-3000 LUX	4.034 lbs	12.80" X 21.06" X 1.38"
ULB25TN022	ULB25TB022	23.19" X 29.21"	22" X 28"	21.18" X 27.20"	2000-2200 LUX	8.179 lbs	23.82" X 33.27" X 1.38"
ULB25TN023	ULB25TB023	21.18" X 31.18"	20" X 30"	19.17" X 29.17"	2200-2500 LUX	8.399 lbs	21.85" X 33.86" X 1.38"
ULB25TN024	ULB25TB024	25.20" X 37.20"	24" X 36"	23.19" X 35.20"	1900-2100 LUX	14.374 lbs	25.79" X 39.96" X 1.38"
ULB25TN034	ULB25TB034	31.18" X 41.18"	30" X 40"	29.17" X 39.17"	1700-2000 LUX	15.807 lbs	31.89" X 43.90" X 1.38"

OPTIONAL ACCESSORIES



Optional dimmer to go with LED illuminated frame.. Simply jack the dimmer in frame and then into powersupply. It adjust the light from dark to max lux of LED illuminated frame. UYUP445550



T: +90 850 433 67 85 / info@mtdisplays.com / www.mtdisplays.com

PHYSICAL DATA

Material

25mm aluminium profile snap open frame with 18 mm depth, PET anti-reflex poster cover, acrylic backing, LED bulbs.

Poster Material & Thickness

0,10 – 0,20 mm for standard product. Max poster thickness 2 mm. Any non-standard poster thicknesses should be indicated with order.

Surface Finish

Black or natural silver-anodized in standard and various RAL colors available with antimicrobial powder coating. Call for custom color requests.

Recycled Content

Up to 78% recycled content used.

Warranty

All products are guaranteed for 3 years by MT Displays with below conditions:

[Warranty Conditions](#)

Storage Conditions

Goods should be stored at 0° to 25°C in a dry place. Store in the original package.

Installation Considerations

Best Buy LEDbox Single Sided is packed unassembled with an easy mounting instruction sheet & fixing set. Supplied with quality certificates and CE/UL PAT test reports passed. One set includes a single sided 25mm snap open frame with 18mm depth and embedded LED bulbs, specially treated acrylic non-glare PET lens to diffuse light across graphics, 1 anti-reflex PET poster cover, 2 wall hangers, 4 screws, 4 anchors, 1 power adapter (12V-2A), 3,5 meter long cable and 1 EU Plug. UK and US plugs are available, should be specified with order. Has no switch, supplied with built-in powersupply, helping long product life. Optional dimmer is available, adjusting the light from dark to max lux of LED illuminated frame. For using LED frame 24 hours in 7 days, please ask for special 7/24 power supplies. Suitable for maximum 350C Indoor temperature (incl. daily sunny hours.) It should be assembled 30 cm from the window.

Design Considerations

Single-sided, wall hanging, edge-lit lightbox with easy and slim snap open frame and long lasting LED technology bulbs. One of the thinnest lightboxes in the market with 18mm depth. Suitable for A0, A1, A2, A3, A4, B1, B2, 11"x17", 20"x30", 24"x36", 30"x40" size posters in portrait and landscape position. Suitable for INDOOR applications for high-traffic areas, because it doesn't obstruct walking paths. High illumination is achieved by specially treated acrylic and provides homogenous illumination. LED bulbs are not seen from outside, since they are embedded in sides of the frame. Translucent poster material should be used for printing the signage. Gives an impressive effect to grab the passers-by. Besides being less expensive, saves up to 60% energy costs, resulting in cost saving both initially and after overall usage. Easy to load and re-load posters, with easy snap open framing. Simply snap up all four sides of the frame and easily insert your poster or take out. Suitable for silk screen printing, max. letter height is 15 mm.

Cleaning and Disinfecting

Clean your displays, with damp microfiber clothes, rinsed with simply water or warm, soapy or gentle shampooed water. Avoid using vinegar, abrasive, acidic, alcohol-based or heavy cleaners or cleaners containing Ammonia. Only after cleaning the product, if needed, simply apply disinfectant or sanitizer that is in compliance with your local guidelines and regulations.

PRINT TEMPLATES

Best Buy LEDbox Single Sided - A4

Document Size: 220 x 307 mm (Includes Bleeds)
Finished Size: A4 (210 x 297 mm) [Print](#)

Best Buy LEDbox Single Sided - A3

Document Size: 307 x 430 mm (Includes Bleeds)
Finished Size: A3 (297 x 420 mm) [Print](#)

Best Buy LEDbox Single Sided - A2

Document Size: 430 x 604 mm (Includes Bleeds)
Finished Size: A2 (420 x 594 mm) [Print](#)

Best Buy LEDbox Single Sided - A1

Document Size: 604 x 851 mm (Includes Bleeds)
Finished Size: A1 (594 x 841 mm) [Print](#)

Best Buy LEDbox Single Sided - A0

Document Size: 851 x 1199 mm (Includes Bleeds)
Finished Size: A0 (841 x 1189 mm) [Print](#)

Best Buy LEDbox Single Sided - B2

Document Size: 510 x 710 mm (Includes Bleeds)
Finished Size: B2 (500 x 700 mm) [Print](#)

Best Buy LEDbox Single Sided - B1

Document Size: 710 x 1010 mm (Includes Bleeds)
Finished Size: B1 (700 x 1000 mm) [Print](#)

Best Buy LEDbox Single Sided - 11"x17"

Document Size: 11.4" x 17.4" (Includes Bleeds)
Finished Size: 11"x17" (279.4x431.8 mm) [Print](#)

Best Buy LEDbox Single Sided - 20"x30"

Document Size: 20.4" x 30.4" (Includes Bleeds)
Finished Size: 20"x30" (508x762 mm) [Print](#)

Best Buy LEDbox Single Sided - 22"x28"

Document Size: 22.4" x 28.4" (Includes Bleeds)
Finished Size: 22"x28" (558.8x711.1 mm) [Print](#)

Best Buy LEDbox Single Sided - 24"x36"

Document Size: 24.4" x 36.4" (Includes Bleeds)
Finished Size: 24"x36" (609.6x914.4 mm) [Print](#)

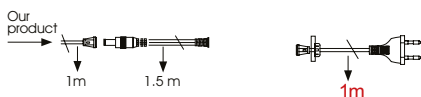
Best Buy LEDbox Single Sided - 30"x40"

Document Size: 30.4" x 40.4" (Includes Bleeds)
Finished Size: 30"x40" (762x1016 mm) [Print](#)

ILLUMINATED PRODUCTS TECHNICAL MANUAL

POWER SUPPLY

- 12 V DC
- Complete with power supply
- 2 year guaranteed
- 7/16 use
- If 7/24 use required, please order individually.



CABLE

Delivered with 3,5 meter long cable and EU plug. UK, US or CH plugs should be specified with order. Extension cable: 1 mm, 2 mm, 3 mm.



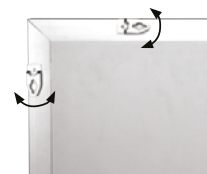
ASSEMBLY SHEET



TECHNICAL SPECIFICATION

ARTICLE	POSTER	ACRYLIC THICKNESS	ILLUMINATION	POWER CONSUMPTION	POWER SUPPLY RECOMMENDED
ULB25TN0A4	210 X 297 mm	3 mm	3000-3300 LUX	7 W / 0.58 A	1 A
ULB25TN0A3	297 X 420 mm	3 mm	2800-3000 LUX	11 W / 0.91 A	1 A
ULB25TN0A2	420 X 594 mm	3 mm	2400-2700 LUX	14 W / 1.16 A	2 A
ULB25TN0A1	594 X 841 mm	4 mm	1900-2100 LUX	21 W / 1.75 A	2 A
ULB25TN0A0	841 X 1189 mm	4 mm	1500-1800 LUX	29 W / 2.4 A	3 A
ULB25TN0B2	500 X 700 mm	3 mm	2100-2400 LUX	17 W / 1.41 A	2 A
ULB25TN0B1	700 X 1000 mm	4 mm	1700-2000 LUX	25 W / 2.08 A	3 A
ULB25TN017	280 X 432 mm	3 mm	2800-3000 LUX	10 W / 0.84 A	1 A
ULB25TN022	559 X 712 mm	3 mm	2000-2200 LUX	17.6 W / 1.5 A	2 A
ULB25TN023	508 X 762 mm	3 mm	2200-2500 LUX	17 W / 1.41 A	2 A
ULB25TN024	610 X 915 mm	4 mm	1900-2100 LUX	22.5 W / 1.9 A	3 A
ULB25TN034	762 X 1016 mm	4 mm	1700-2000 LUX	25 W / 2.08 A	3 A

HANGER



2 wall hangers are standard in each product. Moving hangers let the mounting in portrait and landscape position.

LED FEATURES (Duris E3)

Viewing angle at 50 % IV: 120°
Color: 2700 K - 6500 K (warm, neutral and cool white)
CRI: Min. 80
Luminous Flux: Typ. 30 lm @ 5000 K
Luminous efficacy: Typ. 153 lm/W @ 5000 K
Lumen Maintenance: Testing according to IESNA LM-80 in progress
Life Time : 50,000 Hours
Colour: 5700 K -6500 K (White)*
*For special inquired colour is available in 2700 K -6500 K



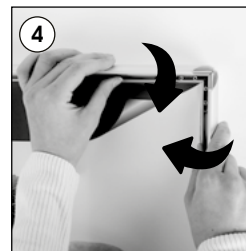
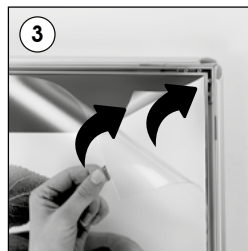
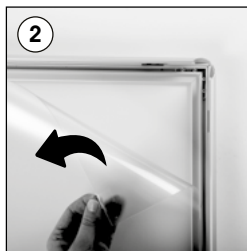
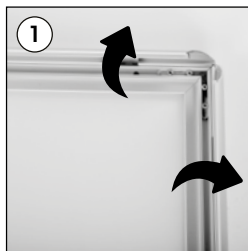
T: +90 850 433 67 85 / info@mtdisplays.com / www.mtdisplays.com

INSTALLATION INSTRUCTIONS

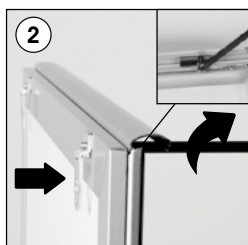
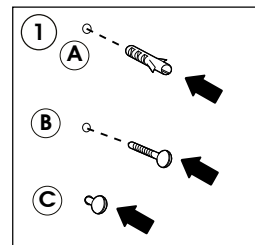
Best Buy LEDbox Single Sided / 1009843H000

Each product package includes

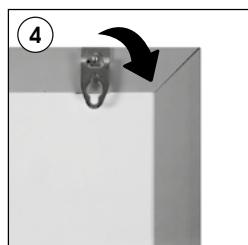
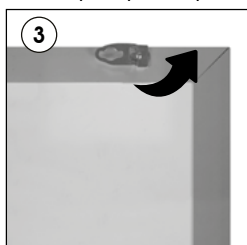
- 1 x PET cover
- 2 x Hanger
- 4 x Screw
- 4 x Anchor
- 1 x Power Adapter 12V-2A
- 1 x EU Plug



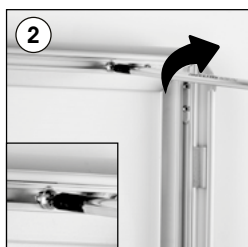
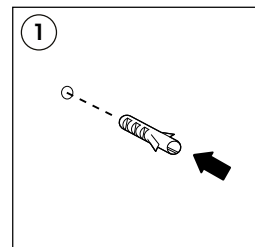
Hanger mounting



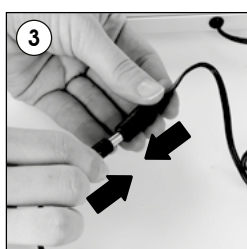
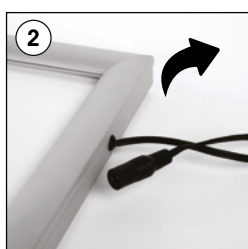
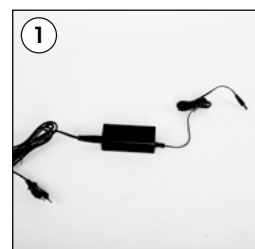
Landscape or portrait positions



Screw & anchor mounting



Power Supply Usage



Caution !

- 1- Do not step on the light panel nor place the heavy object on the light panel.
- 2- Do not pull the cable with excessive force.
- 3- Use correct capacity and voltage of D.C. power supply.
Failure to observe this instruction could result in breakdown.
- 4- Do not touch the light panel or electrical devices with wet hand.
Failure to observe this instruction could result in electrical shocks and severe injuries.
- 5- Do not subject this light panel to outdoor, high humid and vaporized area.
Failure to observe this instruction could result in breakdown.
- 6- Keep this out of the direct rays of the sun.
Failure to observe this instruction could result in color changes of acrylic plate.
- 7- Keep away from fire or severe hot place. Acceptable ambient temperature is max.35°C
Failure to observe this instruction could result in shorten the life time and degradation of brightness of LED light source.

• Please inform the order number on the product or on the carton (e.g. 1/110001394-460) to the place that you have made the purchase if any problem with the product occurs.

This technical sheet's contents are all subject to update and modification at MT Displays' exclusive discretion. There is nothing official about this document. For final and legally binding information, please get in touch with the sales staff at MT Displays.



T: +90 850 433 67 85 / info@mtdisplays.com / www.mtdisplays.com