

CONVEX LEDBOX



SINGLE-SIDED BACK-LIT LIGHT BOXES WITH EASY SNAP OPEN DESIGN

Single faced convex boxes are available in various sizes. Access to posters is by snap frame profiles on each long side. The surface is opal acrylic. The snap has a 25 mm profile. Convex Lightbox includes a PET cover which is ideal to illuminate your duratrans & posters without shining. Best to be with printings on backlit film or duratrans.

KEY SELECTION ATTRIBUTES

- * Single-sided, curved design, wall hanging, back-lit lightbox with long lasting LED technology bulbs and easy snap open profiles on long sides.
- * Suitable for INDOOR applications with A1, A2, A3, A4, B2, 20"x30" poster sizes for displaying in portrait and landscape positions.
- * Highly powerful illumination is achieved with long lasting LED technology bulbs and opal acrylic poster backing. Anti-reflex PET poster cover is ideal to illuminate your posters without shining.
- * Illumination save up to 60% energy cost with an increased life expectancy.
- * Supplied with quality certificates and CE/UL PAT test reports passed.
- * RAL9006 grey powder coated main body in standard and various RAL colors available with antimicrobial powder coating.
- * One set includes a single sided aluminum body frame with 25mm snap open profiles with 28mm depth on long sides; ventilation holes on short sides; backlit design with LED bulbs; 1 opal acrylic backing to diffuse light across graphics;

- 1 matt/clear anti-reflex PET poster cover; 2 screws and 2 anchors for installation; 1 power adapter (12V-2A) with 2,5 meter long cable and 1 EU Plug. UK and US plugs are available, should be specified with order. All electrical components are CE listed.
- * Product is wall mounting, no further hanging accessories are included in the original pack. Use the screw holes in the back of the frame to align and surface mount.
- * Backlit film or translucent poster material should be used for printing the signage.
- * Easy to load and re-load posters, with easy snap open framing. Simply snap up long sides of the frame and easily insert your poster or take out.
- * Complete with the built-in on/off switch and outer power supply.
- * Packed with easy mounting instruction sheet.



Portrait



Landscape



COLOURS IN STOCK



Silver

COLOUR OPTIONS

Black Anodised

Silver Anodised

Black - RAL 9005

White - RAL 9003

Red - RAL 3020

Blue - RAL 5002

Green - RAL 6029

Yellow - RAL 1021

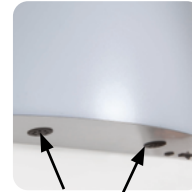
SUITABLE FOR

Convex LEDbox can be used for a wide range of INDOOR applications, for signage needs in many locations like retail point-of-purchase, tradeshow displays, movie theatres, sports facilities, shopping malls, markets, groceries, hotels, airports, shops and stores, hospitals, restaurants, halls, meeting, rooms, gas stations, casinos, and more.

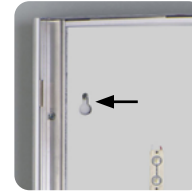
FEATURES



On/off switch

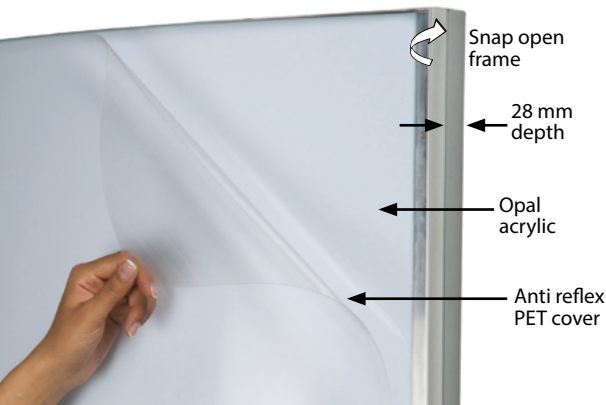


Ventilation hole

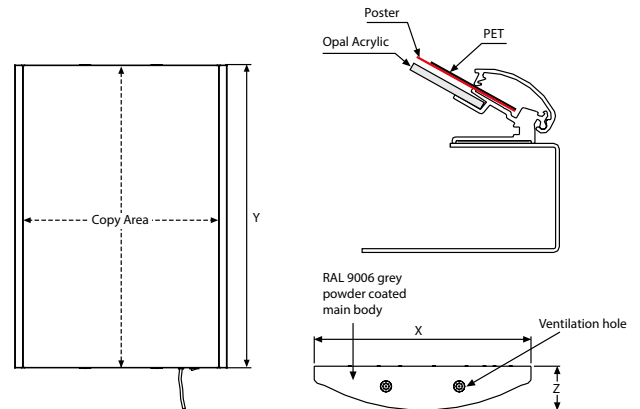


Hanger

EXPLODED VIEW



TECHNICAL DRAWING



ARTICLES

ARTICLE	EXTERNAL (x-y-z)	POSTER	COPY	LIGHTING	WEIGHT	PACKING SIZE
					WITH PACKING	*W X H X D
UCLB25LNA4	224 X 300 X 71 mm	210 X 297 mm	185 X 297 mm	2800-3300 LUX	1,800 kg	280 X 340 X 80 mm
UCLB25LNA3	308 X 423 X 82 mm	297 X 420 mm	273 X 420 mm	2500-3000 LUX	3,100 kg	335 X 445 X 95 mm
UCLB25LNA2	424 X 597 X 98 mm	420 X 594 mm	395 X 594 mm	2000-2300 LUX	5,800 kg	450 X 625 X 110 mm
UCLB25LNA1	592 X 844 X 120 mm	594 X 841 mm	570 X 841 mm	2500-2700 LUX	11,000 kg	625 X 875 X 130 mm
UCLB25LNB2	500 X 703 X 110 mm	500 X 700 mm	475 X 700 mm	2200-2500 LUX	7,750 kg	530 X 725 X 120 mm
UCLB25LN23	20.08" X 30.2"	20" X 30"	19.06" X 30"	1800-2200 LUX	17.592 lbs	20.67" X 30.71" X 4.33"
UCLB25LN22	21.93" X 28.15"	22" X 28"	20.98" X 28"	1800-2200 LUX	16.578 lbs	24.02" X 28.74" X 4.92"
UCLB25LN34	29.53" X 40.12"	30" X 40"	29.02" X 40"	2000-2300 LUX	32.650 lbs	30.12" X 40.75" X 5.91"



T: +90 850 433 67 85 / info@mtdisplays.com / www.mtdisplays.com

PHYSICAL DATA

Material

25mm aluminium profile snap open frame with 28 mm depth, PET anti-reflex poster cover, opal acrylic backing, LED bulbs.

Poster Material

Backlit film or translucent poster material should be used for printing the signage.

Surface Finish

RAL9006 grey powder coated main body in standard and various RAL colors available with antimicrobial powder coating. Call for custom color requests.

Recycled Content

Up to 78% recycled content used.

Warranty

All products are guaranteed for 2 years by MT Displays with below conditions:
[Warranty Conditions](#)

Storage Conditions

Goods should be stored at 0° to 25°C in a dry place. Store in the original package.

Installation Considerations

Convex LEDbox is packed with an easy mounting instruction sheet. Supplied with quality certificates and CE/UL PAT test reports passed. One set includes a single sided aluminum body frame with 25mm snap open profiles with 28mm depth on long sides; ventilation holes on short sides; back-lit design with LED bulbs; 1 opal acrylic backing to diffuse light across graphics; 1 matt/clear anti-reflex PET poster cover; 2 screws and 2 anchors for installation; 1 power adapter (12V-2A) with 2,5 meter long cable and 1 EU Plug. UK and US plugs are available, should be specified with order. All electrical components are CE listed. Complete with the built-in on/off switch and outer power supply. Product is wall mounting, no further hanging accessories are included in the original pack. Use the screw holes in the back of the frame to align and surface mount.

Design Considerations

Single-sided, curved design, wall hanging, back-lit lightbox with long lasting LED technology bulbs and easy snap open profiles on long sides. Suitable for INDOOR applications with A1, A2, A3, A4, B2, 20"x30" poster sizes for displaying in portrait and landscape positions. Highly powerful illumination is achieved with long lasting LED technology bulbs and opal acrylic poster backing. Anti-reflex PET poster cover is ideal to illuminate your posters without shining. Illumination save up to 60% energy cost with an increased life expectancy. Easy to load and re-load posters, with easy snap open framing. Simply snap up long sides of the frame and easily insert your poster or take out. Suitable for silk screen printing, max. letter height is 15 mm.

Cleaning and Disinfecting

Clean your displays, with damp microfiber clothes, rinsed with simply water or warm, soapy or gentle shampooed water. Avoid using vinegar, abrasive, acidic, alcohol-based or heavy cleaners or cleaners containing Ammonia. Only after cleaning the product, if needed, simply apply disinfectant or sanitizer that is in compliance with your local guidelines and regulations.

PRINT TEMPLATES

Convex LEDbox - A4

Document Size: 220 x 307 mm (Includes Bleeds)
Finished Size: A4 (210 x 297 mm) [Print](#)

Convex LEDbox - A3

Document Size: 307 x 430 mm (Includes Bleeds)
Finished Size: A3 (297 x 420 mm) [Print](#)

Convex LEDbox - A2

Document Size: 430 x 604 mm (Includes Bleeds)
Finished Size: A2 (420 x 594 mm) [Print](#)

Convex LEDbox - A1

Document Size: 604 x 851 mm (Includes Bleeds)
Finished Size: A1 (594 x 841 mm) [Print](#)

Convex LEDbox - B2

Document Size: 510 x 710 mm (Includes Bleeds)
Finished Size: B2 (500 x 700 mm) [Print](#)

Convex LEDbox - 20"x30"

Document Size: 20.4" x 30.4" (Includes Bleeds)
Finished Size: 20"x30" (508x762 mm) [Print](#)

Convex LEDbox - 22"x28"

Document Size: 22.4" x 28.4" (Includes Bleeds)
Finished Size: 22"x28" (558.8x711.1 mm) [Print](#)

Convex LEDbox - 30"x40"

Document Size: 30.4" x 40.4" (Includes Bleeds)
Finished Size: 30"x40" (762x1016 mm) [Print](#)

ILLUMINATED PRODUCTS TECHNICAL MANUAL

POWER SUPPLY

- 12 V DC
- Complete with power supply
- 2 year guaranteed
- 7/16 use
- If 7/24 use required, please order individually.

CABLE

Delivered with 2,5 meter long cable and EU plug. UK, US or CH plugs should be specified with order.



TECHNICAL SPECIFICATION

ARTICLE	POSTER	ILLUMINATION	POWER CONSUMPTION	POWER SUPPLY RECOMMENDED
UCLB25LNA4	210 X 297 mm	1100-1200 LUX	2 W / 0.16 A	1 A
UCLB25LNA3	297 X 420 mm	1100-1200 LUX	3 W / 0.24 A	1 A
UCLB25LNA2	420 X 594 mm	700-800 LUX	8 W / 0.64 A	1 A
UCLB25LNA1	594 X 841 mm	1000-1100 LUX	10 W / 0.84 A	2 A
UCLB25LNB2	500 X 700 mm	500-1000 LUX	7 W / 0.6 A	1 A

HANGER



2 wall hangers are standard in each product. Hang the unit with key holes on the back.

LED FEATURES (IAC324B)

- Viewing angle at : Wide view angle 160°
- Color: 8000 K - 10000 K (cool white)
- CRI: Min. 70
- Luminous Flux: Typ. 40 lm @ 9000 K
- Life Time : 50.000 Hours



ASSEMBLY SHEET

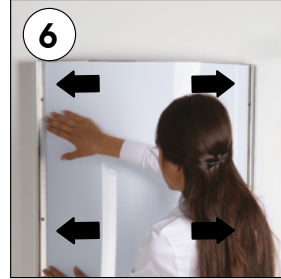
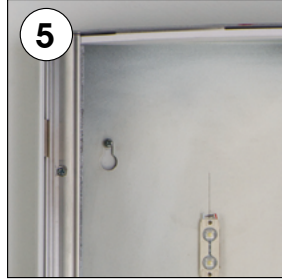
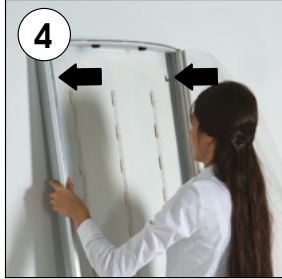
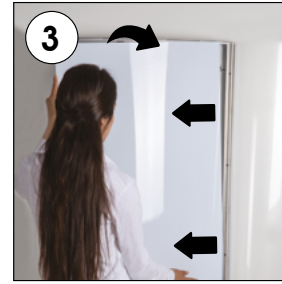
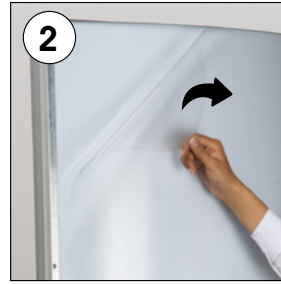
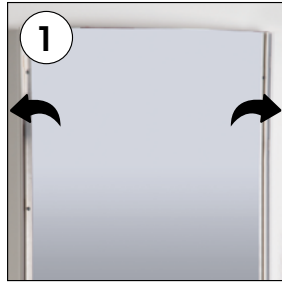


INSTALLATION INSTRUCTIONS

Convex LEDbox / 1009251

Each product package includes

- 1 x EU plug
- 1 x Power adapter 12V-1A
- 1 x PET Opaque
- 1 x PET (Matt/clear)
- 2 x Screw
- 2 x Anchor



- Please inform the order number on the product or on the carton (e.g. 1/110001394-460) to the place that you have made the purchase if any problem with the product occurs.
- All rights reserved. All pictures, figures and writings are secured internationally by copy-right law. Infringements will be sued by civil and legal law.

This technical sheet's contents are all subject to update and modification at MT Displays' exclusive discretion. There is nothing official about this document. For final and legally binding information, please get in touch with the sales staff at MT Displays.



T: +90 850 433 67 85 / info@mtdisplays.com / www.mtdisplays.com