

CURVED MENUBOARD WITH ACRYLED



MENUBOARDS ILLUMINATED WITH LED TECHNOLOGY

Curved Menuboard with Acryled has both silver & black finish. Curved Menuboard is suitable to use in hotels, galleries, museums, restaurants, lobby, bars. Available in A4 and A3 portrait and landscape positions. Special treated acrylic and LED technology illuminates prints homogenous. The edgelit Acryled mounts on Curved Menuboard both portrait & landscape. Poster placed in position by 2 clear clips on 2 short sides.

KEY SELECTION ATTRIBUTES

- * Curved Menuboard with specially treated acrylic and LED technology for illuminating prints homogeneously.
- * Suitable for poster sizes A3 and A4 in portrait and landscape positions.
- * One set includes a powder coated heavy base, aluminium ellipse profile curved body with an on/off switch at the top, a cable outlet & power adapter at the bottom, and an edgelit acryled poster holder with a sight angle that catches the eye level.

- * Poster is placed in position by 2 clear clips on 2 short sides.
- * Natural silver-anodized, black and various RAL colors available with antimicrobial powder coating.
- * Heavy elegant base provides stability.
- * Packed unassembled in a sturdy box.



Silver - Landscape



Black - Portrait

One product,
two positions
(landscape & portrait)



COLOURS IN STOCK



Silver Black

SUITABLE FOR

Menuboards can be used for INDOOR applications, for signage needs in many locations like shopping centers, markets, groceries, hotels, offices airports, shops and stores, hospitals, schools, apartments and many more.

WATCH VIDEO



Watch video at our website
www.mtdisplays.com

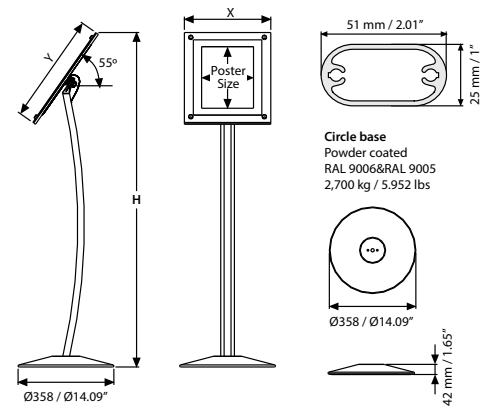
FEATURES



EXPLODED VIEW



TECHNICAL DRAWING



ARTICLES

SILVER	BLACK	EXTERNAL (x-y)	POSTER	COPY	HEIGHT	DESCRIPTION	WEIGHT	PACKING SIZE
							WITH PACKING	*W X H X D
UCUALN00A4	UCUALB00A4	323 X 410 mm	210 X 297 mm	192 X 279 mm	1250 mm	A4 portrait	7,150 kg	365 X 1110 X 102 mm
					1215 mm	A4 landscape		
UCUALN00A3	UCUALB00A3	410 X 533 mm	297 X 420 mm	279 X 402 mm	1250 mm	A3 portrait	5,550 kg	530 X 1350 X 110 mm
					1303 mm	A3 landscape		
UCUALN0081	UCUALB0081	12.95" X 16.14"	8.5" X 11"	7.79" X 10.29"	49.21"	8.5"x11" portrait	15.763 lbs	14.37" X 43.70" X 4.02"
					47.83"	8.5"x11" landscape		
UCUALN0017	UCUALB0017	16.14" X 20.98"	11" X 17"	10.259" X 16.29"	51.30"	11"x17" portrait	18.408 lbs	30.87" X 53.15" X 4.33"
					49.21"	11"x17" landscape		

OPTIONAL ACCESSORIES



Adapter for A4 Brochure Holder (30 Pcs) / UYPMBH00A4
Adapter for A5 Brochure Holder (45 Pcs) / UYPMBH00A5



A4 Brochure Holder (30 Pcs)
UMSDMB00A4



A5 Brochure Holder (45 Pcs)
UMSDMB00A5



T: +90 850 433 67 85 / info@mtdisplays.com / www.mtdisplays.com

PHYSICAL DATA

Material

25x51 mm aluminium ellipse profile curved body, specially treated edgelit acryled poster holder with poster clips and cover. Acrylic optional shelves.

Poster Material & Thickness

0,10 – 0,20 mm for standard product. Max poster thickness is 0,5 mm. any non-standard poster thicknesses should be indicated with order.

Surface Finish

Silver anodized or black colour, antimicrobial powder coating. Custom colors also available, call for custom color requests.

Recycled Content

Up to 78% recycled content used.

Warranty

All products are guaranteed for 3 years by MT Displays with below conditions:
[Warranty Conditions](#)

Storage Conditions

Goods should be stored at 0° to 25°C in a dry place. Store in the original package.

Installation Considerations

Menuboards are packed unassembled in a sturdy box with an easy-to-understand instruction sheet &

fixing elements. One set includes a powder coated heavy base, aluminium ellipse profile curved body with an on/off switch at the top, a cable outlet & power adapter at the bottom, and an edgelit acryled poster holder with poster clips and cover. Poster is placed in position by 2 clear clips on 2 short sides. When the nut on the back of frame is loose, frame can be placed in either portrait or landscape position. Optional brochure holder and its adapter should be ordered seperately.

Cleaning and Disinfecting

Clean your displays, with damp microfiber clothes, rinsed with simply water or warm, soapy or gentle shampooed water. Avoid using vinegar, abrasive, acidic, alcohol-based or heavy cleaners or cleaners containing Ammonia. Only after cleaning the product, if needed, simply apply disinfectant or sanitizer that is in compliance with your local guidelines and regulations.

Design Considerations

LED technology illuminates the posters and papers. Suitable for A3 and A4 poster sizes in Landscape and Portrait positions with a sight angle that catches the eye level. The heavy elegant base provides stability.

PRINT TEMPLATES

Simplistic Curved Menuboard - A4

Document Size: 220 x 307 mm (Includes Bleeds)
Finished Size: A4 (210 x 297 mm) [Print](#)

Simplistic Curved Menuboard - A3

Document Size: 307 x 430 mm (Includes Bleeds)
Finished Size: A3 (297 x 420 mm) [Print](#)

Simplistic Curved Menuboard - 8.5"x11"

Document Size: 8.89" x 11.4" (Includes Bleeds)
Finished Size: 8.5" x 11" (279.4 x 431.8 mm)

Simplistic Curved Menuboard - 11"x17"

Document Size: 11.4" x 17.4" (Includes Bleeds)
Finished Size: 11" x 17" (279.4 x 431.8 mm)

ILLUMINATED PRODUCTS TECHNICAL MANUAL

POWER SUPPLY

- 12 V DC
- Complete with power supply
- 2 year guaranteed
- 7/16 use
- If 7/24 use required, please order individually.

CABLE

Delivered with 2,5 meter long cable and EU plug. UK, US or CH plugs should be specified with order. Extension cable: 1 mm, 2 mm, 3 mm.



TECHNICAL SPECIFICATION

SILVER	BLACK	POSTER	ILLUMINATION	POWER CONSUMPTION	POWER SUPPLY RECOMMENDED
UCUALN00A4	UCUALB00A4	210 X 297 mm	5000-5500 LUX	5.7 W / 0.48 A	1 A
UCUALN00A3	UCUALB00A3	297 X 420 mm	4500-5000 LUX	17.28 W / 1.44 A	2 A

FEATURES

- Halo effect around the frame.
- Improved Led technology for improved luminance.
- Pre-treated light guided panel diffuses light even & powerful.
- Saves up to 60% energy costs.
- CE certificate provided..

LED FEATURES (Duris E5)

Viewing angle at 50 % IV: 120°

Color: 2700 K - 6500 K (white)

CRI: Min. 80 (typ. 85)

Luminous Flux: Typ. 56 lm @ 5000 K

Luminous efficacy: Typ. 156 lm/W @ 5000 K

Luminous efficacy @ 65m A: Typ. 170 lm/W @ 5000K

Lumen Maintenance: Testing according to

IESNA LM-80 in progress

Life Time : 50.000 Hours

Colour: 5700 K -6500 K (White)*

*For special inquired colour is available in 2700 K -6500 K



ASSEMBLY SHEET

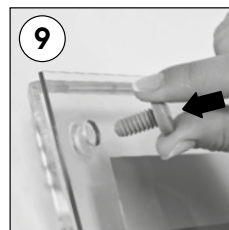
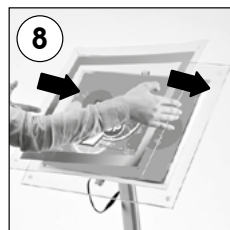
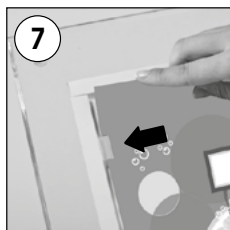
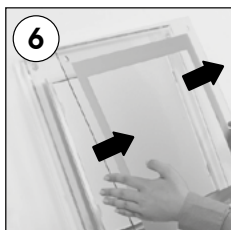
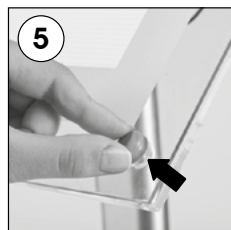
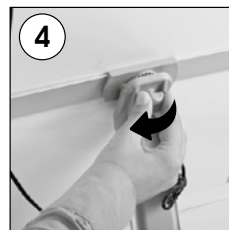
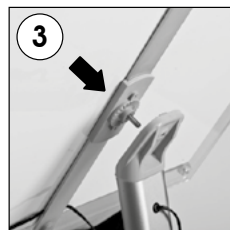
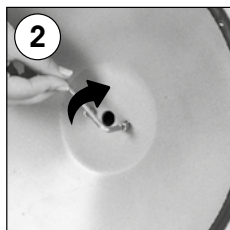
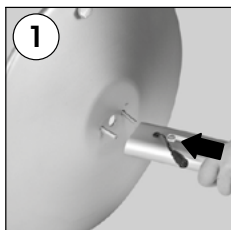


INSTALLATION INSTRUCTIONS

Curved Menubard with Acryled / 1007020

Each product includes

- 1 x Main body profile
- 1 x Base
- 1 x AcryLED
- 1 x Power Adapter
- 2 x Bolt M6x25
- 1 x 5 allen key
- 1 x Power adapter



Landscape or portrait position



• Please inform the order number on the product or on the carton (e.g. 1/110001394-460) to the place that you have made the purchase if any problem with the product occurs.

• All rights reserved. All pictures, figures and writings are secured internationally by copy-right law. Infringements will be sued by civil and legal law.

This technical sheet's contents are all subject to update and modification at MT Displays' exclusive discretion. There is nothing official about this document. For final and legally binding information, please get in touch with the sales staff at MT Displays.



T: +90 850 433 67 85 / info@mtdisplays.com / www.mtdisplays.com