

DOOR SIGN



PERFECT SIGN TOOL TO HELP DIRECT TRAFFIC IN BUSINESS ENVIRONMENT

Suitable for use in open-air spaces or public areas such as schools, offices, hospitals, etc. It is an elegant and practical product. You merely need to open the front profile in order to change your documents. An anti-reflex PET cover protects your documents from tearing and suffering damage. It can be used both in portrait and landscape positions.

KEY SELECTION ATTRIBUTES

- * Ideal for medium-sized posters.
- * It is a secure, hard-to-open profile.
- * Suitable for open-air use or highly frequented areas accessible to the public.
- * Silver anodised aluminium poster snap profiles.
- * Natural silver-anodised finish and various RAL colours are available.

- * 15 mm or 26 mm profiles on both short sides.
- * Front cover is anti-reflex
- * Designed for paper inserts* Anti-reflex PET cover for protection
- * Landscape & portrait position Fixing kit included for 25mm and self-adhesive tape for 15mm models.
- * Fixing kit included for 25mm and self-adhesive tape for 15mm models.



15 mm



26 mm



COLOURS IN STOCK



Silver

COLOUR OPTIONS

Black - RAL 9005

Red - RAL 3020

Green - RAL 6029

White - RAL 9003

Blue - RAL 5002

Yellow - RAL 1021

SUITABLE FOR

Door Signs can be used for INDOOR applications, for signage needs in many locations like shopping centers, markets, hotels, offices airports, shops and stores, hospitals, schools, apartments and many more.

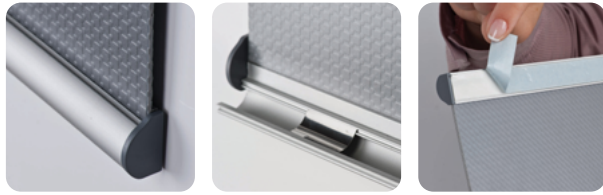
WATCH VIDEO



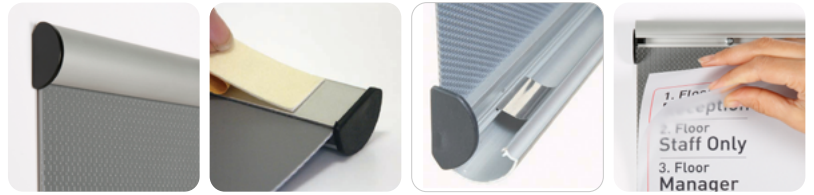
Watch video at our website
www.mtdisplays.com

FEATURES

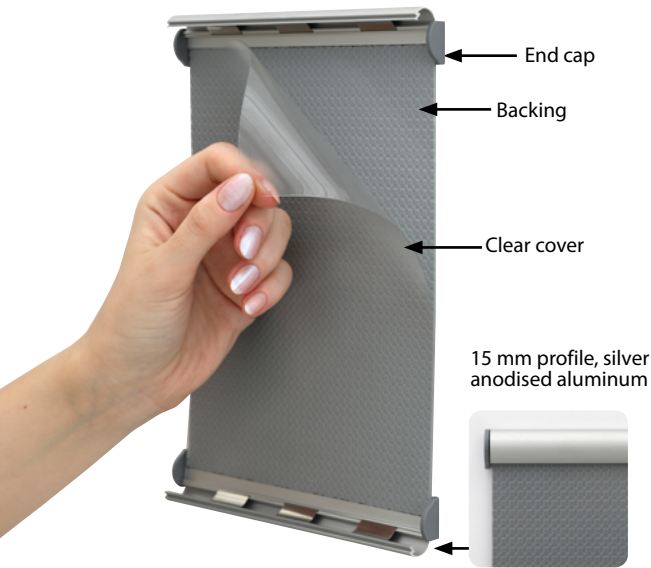
15 mm



26 mm

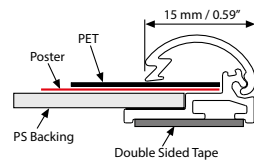
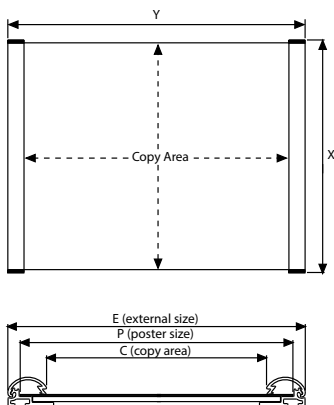


EXPLODED VIEW

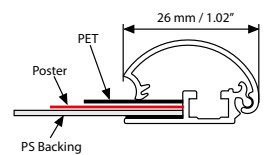
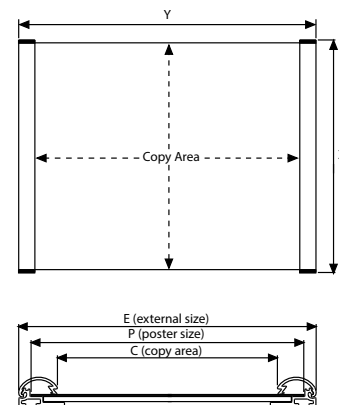


TECHNICAL DRAWING

15 mm



26 mm



T: +90 850 433 67 85 / info@mtdisplays.com / www.mtdisplays.com

ARTICLES

15 mm Poster Snap				WEIGHT	PACKING SIZE
ARTICLE	EXTERNAL (x-y)	POSTER	COPY	WITH PACKING	*W X H X D
UDS150N0A7	79 X 115 mm	74 X 105 mm	74 X 84 mm	0,745 kg	120 X 200 X 100 mm (15 Pcs)
UDS150N0A6	110 X 158 mm	105 X 148 mm	105 X 127 mm	0,600 kg	120 X 200 X 100 mm (5 Pcs)
UDS150N0A5	153 X 220 mm	148 X 210 mm	148 X 189 mm	2,880 kg	245 X 350 X 80 mm (20 Pcs)
UDS150N0A4	215 X 307 mm	210 X 297 mm	210 X 276 mm	2,530 kg	245 X 350 X 80 mm (10 Pcs)
UDS150N0A3	104 X 220 mm	99 X 210 mm	99 X 189 mm	2,880 kg	245 X 350 X 80 mm (30 Pcs)
UDS150N046	4.20" X 6.39"	4" X 6"	4" X 5.17"	1.333 lbs	4.72" X 7.87" X 3.94" (5 Pcs)
UDS150N057	5.20" X 7.39"	5" X 7"	5" X 6.17"	1.984 lbs	7.09" X 9.45" X 5.51" (5 Pcs)
UDS150N081	8.70" X 11.39"	8.5" X 11"	8.5" X 10.17"	5.577 lbs	9.65" X 13.78" X 3.15" (10 Pcs)

26 mm Poster Snap				WEIGHT	PACKING SIZE
ARTICLE	EXTERNAL (x-y)	POSTER	COPY	WITH PACKING	*W X H X D
UDS0001050	56 X 177 mm	50 X 148 mm	50 X 126 mm	0,620 kg	120 X 200 X 100 mm (10 pcs)
UDS0002050	111 X 177 mm	105 X 148 mm	105 X 126 mm	0,545 kg	120 X 200 X 100 mm (5 pcs)
UDS0003050	111 X 326 mm	105 X 297 mm	105 X 275 mm	1,680 kg	245 X 350 X 80 mm (10 pcs)
UDS0004050	154 X 239 mm	148 X 210 mm	148 X 188 mm	0,930 kg	245 X 350 X 80 mm (10 pcs)
UDS0005050	216 X 326 mm	210 X 297 mm	210 X 275 mm	1,405 kg	245 X 350 X 80 mm (5 pcs)
UDS0008000	4.24" X 7.14"	4" X 6"	4" X 5.13"	1.102 lbs	4.72" X 7.87" X 3.94" (10 pcs)
UDS0007000	5.24" X 8.14"	5" X 7"	5" X 6.13"	1.984 lbs	5.31" X 7.87" X 3.94" (5 pcs)
UDS0006000	8.74" X 12.14"	8.5" X 11"	8.5" X 10.13"	2.976 lbs	10.04" X 13.39" X 3.15" (5 pcs)

PHYSICAL DATA

Material

15 mm or 26 mm aluminum profiles.
PET poster cover, PS backing or ABS backing.

Poster Material & Thickness

Suitable for paper inserts in thickness 0,1-0,2mm for standard product and max 1mm for nonstandard. Any non-standard paper thicknesses should be indicated with order.

Surface Finish

Silver anodized, or black colour, antimicrobial powder coating. Custom colors also available, call for custom color requests.

Recycled Content

Up to 70% recycled content used.

Warranty

All products are guaranteed for 3 years by MT Displays with below conditions:
[Warranty Conditions](#)

Installation Considerations

Each door sign includes mounting instruction sheet. 15 mm in top snap 8 mm poster & in bottom snap 8 mm poster is placed within the clamping system. 26 mm in top snap 11 mm poster & in bottom snap 11 mm poster is placed within the clamping system. Please clean the surface before applying the double-sided tape for better application.

Storage Conditions

Goods should be stored at 0° to 25°C in a dry place. Store in the original package.

Design Considerations

Suitable for silk screen printing, max. letter height is 15 mm for 25 mm. Suitable for silk screen printing, max. letter height is 21 mm for 42 mm.

Cleaning and Disinfecting

Clean your displays, with damp microfiber clothes, rinsed with simply water or warm, soapy or gentle shampooed water. Avoid using vinegar, abrasive, acidic, alcohol-based or heavy cleaners or cleaners containing Ammonia. Only after cleaning the product, if needed, simply apply disinfectant or sanitizer that is in compliance with your local guidelines and regulations.

PRINT TEMPLATES

Door Sign 15 mm - A7

Document Size: 220 x 307 mm (Includes Bleeds)
Finished Size: A4 (210 x 297 mm) [Print](#)

Door Sign 15 mm - A6

Document Size: 307 x 430 mm (Includes Bleeds)
Finished Size: A3 (297 x 420 mm) [Print](#)

Door Sign 15 mm - A5

Document Size: 430 x 604 mm (Includes Bleeds)
Finished Size: A2 (420 x 594 mm) [Print](#)

Door Sign 26 mm - 50x148 mm

Document Size: 60 x 158 mm (Includes Bleeds)
Finished Size: 50 x 148 mm [Print](#)

Door Sign 26 mm - A6

Document Size: 115 x 158 mm (Includes Bleeds)
Finished Size: A6 (105 x 148 mm) [Print](#)

Door Sign 26 mm - A4/3

Document Size: 110 x 307 mm (Includes Bleeds)
Finished Size: A4/3 (105 x 297 mm) [Print](#)

Door Sign 15 mm - A4

Document Size: 604 x 851 mm (Includes Bleeds)
Finished Size: A1 (594 x 841 mm) [Print](#)

Door Sign 15 mm - A4/3

Document Size: 510 x 710 mm (Includes Bleeds)
Finished Size: B2 (500 x 700 mm) [Print](#)

Door Sign 0.59" - 4"x6"

Document Size: 8.9" x 11.4" (Includes Bleeds)
Finished Size: 8.5"x11" (215.9x279.4 mm)

Door Sign 26 mm - A5

Document Size: 158 x 220 mm (Includes Bleeds)
Finished Size: A5 (148 x 210 mm) [Print](#)

Door Sign 26 mm - A4

Document Size: 220 x 307 mm (Includes Bleeds)
Finished Size: A4 (210 x 297 mm) [Print](#)

Door Sign 1.02" - 4"x6"

Document Size: 4.4" x 6.4" (Includes Bleeds)
Finished Size: 4"x6" (101.6x152.4 mm)

Door Sign 0.59" - 5"x7"

Document Size: 20.4" x 30.4" (Includes Bleeds)
Finished Size: 20"x30" (508x762 mm)

Door Sign 0.59" - 8.5"x11"

Document Size: 22.4" x 28.4" (Includes Bleeds)
Finished Size: 22"x28" (558.8x711.1 mm)

Door Sign 0.59" - 5"x7"

Document Size: 5.4" x 7.4" (Includes Bleeds)
Finished Size: 5"x7" (127x177.8 mm)

Door Sign 0.59" - 8.5"x11"

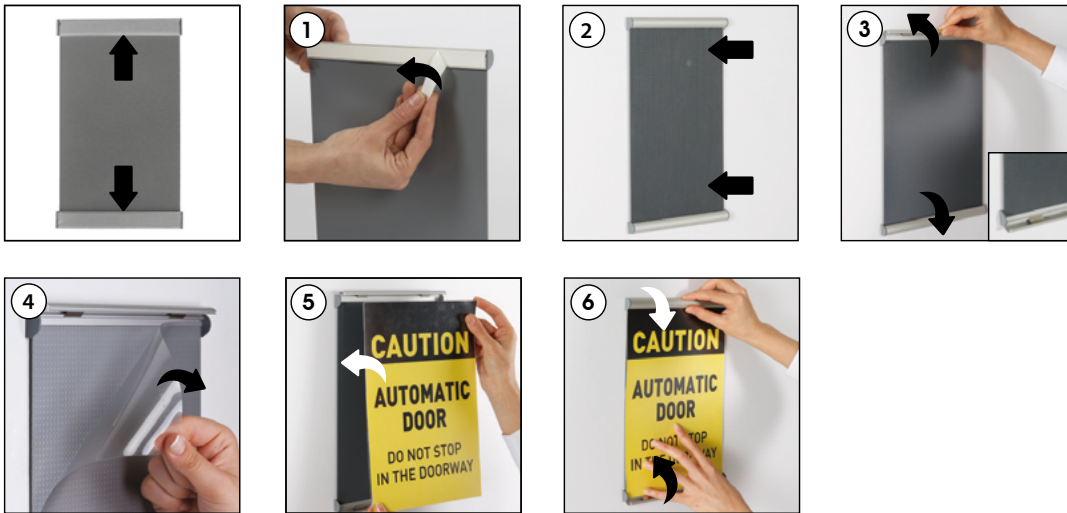
Document Size: 8.89" x 11.4" (Includes Bleeds)
Finished Size: 8.5"x11" (215.9x279.4 mm)



INSTALLATION INSTRUCTIONS

Door Sign 15 mm / 1005989

Each Door Sign includes adhesive tape

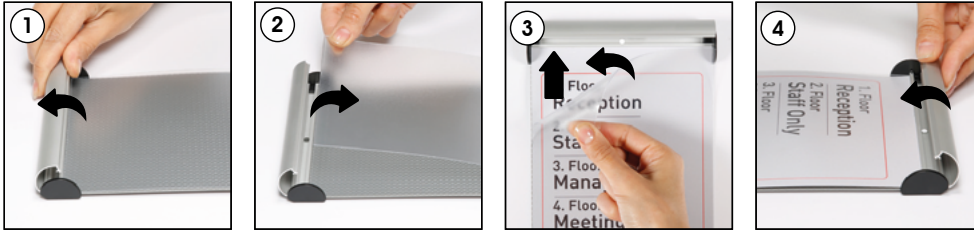


- Please inform the order number on the product or on the carton (e.g. 1/110001394-460) to the place that you have made the purchase if any problem with the product occurs.
- All rights reserved. All pictures, figures and writings are secured internationally by copy-right law. Infringements will be sued by civil and legal law.

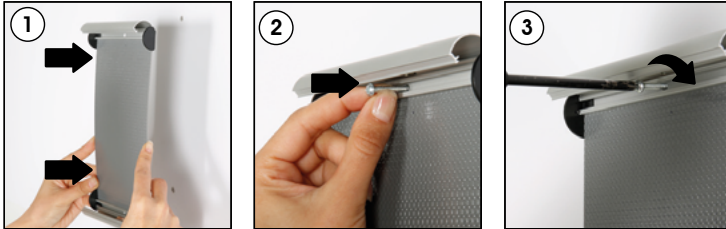


Door Sign 26 mm / 1001872

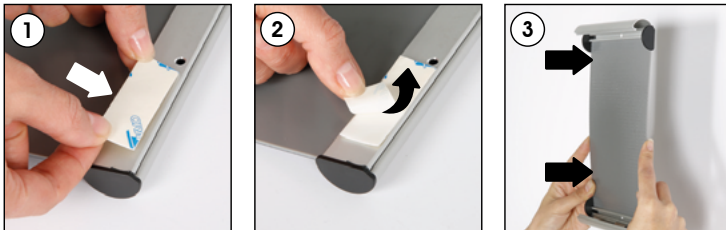
Each Door Sign includes wall mounting accessories
(screws & anchors) and adhesive tape



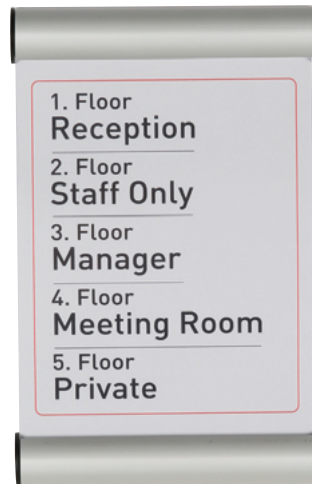
Screw & anchor mounting



Adhesive tape mounting



- Please inform the order number on the product or on the carton (e.g. 1/110001394-460) to the place that you have made the purchase
- All rights reserved. All pictures, figures and writings are secured internationally by copy-right law. Infringements will be sued by civil and legal law.



This technical sheet's contents are all subject to update and modification at MT Displays' exclusive discretion. There is nothing official about this document. For final and legally binding information, please get in touch with the sales staff at MT Displays.



T: +90 850 433 67 85 / info@mtdisplays.com / www.mtdisplays.com