

ECO A BOARDS



COST-SAVING SIDEWALK SIGNS WITH CLICK CLACK OPENING DESIGN

A double-sided customer stopper, practical to change the poster within. A1, 500x700 mm, 700x1000 mm sizes are available. 25 mm profile, snap frame. Round or mitred corner options are available. PS backing for indoor use on Eco Indoor A Board whereas galvanized backing for Eco Outdoor A Board. Both are offered with cost-saving mill finished legs.

KEY SELECTION ATTRIBUTES

- * Double-sided Pavement Sign with "Click Clack" snap open design.
- * Cost-saving with mill finished legs.
- * Suitable for poster sizes A1, 500x700mm and 700x1000mm.
- * One set includes double sided snap open frames, 2 anti-reflex poster covers, hinges, and scissors for keeping the system stable.
- * Optional Wire Header Holder, Header Board and Brochure Baskets are not included, should be ordered separately.
- * Galvanised metal back panel on Outdoor version provides stability.
- * Natural silver-anodized, black in standard and various RAL colors available with antimicrobial powder coating.
- * Packed in a single box.



Outdoor - Silver



Indoor - Black



Outdoor - Black



Indoor - Silver



COLOURS IN STOCK



COLOUR OPTIONS

White - RAL 9003

Red - RAL 3020

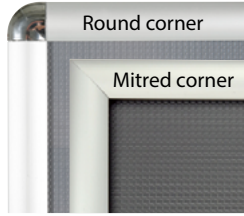
Green - RAL 6029

Blue - RAL 5002

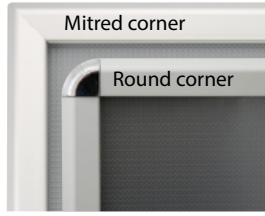
Yellow - RAL 1021

CORNER TYPES

Indoor 25 mm profile



Outdoor 32 mm profile



SUITABLE FOR

Eco A Boards can be used for INDOOR and OUTDOOR applications, for signage needs in many locations like shopping centers, markets, groceries, hotels, offices airports, shops and stores, hospitals, schools, apartments and many more.

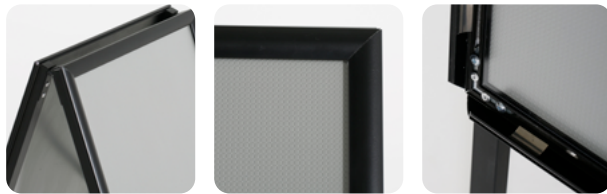
WATCH VIDEO



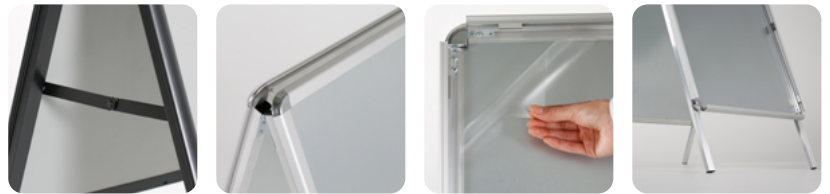
Watch video at our website
www.mtdisplays.com

FEATURES

Indoor 25 mm profile



Outdoor 32 mm profile



EXPLODED VIEW

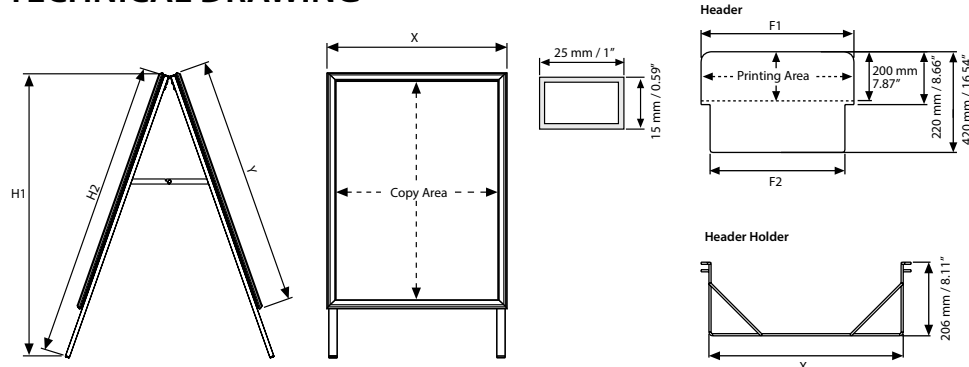
Outdoor 32 mm profile



Indoor 25 mm profile



TECHNICAL DRAWING



T: +90 850 433 67 85 / info@mtdisplays.com / www.mtdisplays.com

ARTICLES

ECO A BOARD INDOOR : PS Backing + Mill Finish Legs PROFILE : 25 mm								
SILVER MITRED	SILVER ROUND	BLACK MITRED	BLACK ROUND	POSTER	X	Y	H1	H2
UAB25SHNA2	UAB25OHNA2	UAB25SHBA2	UAB25OHBA2	420 X 594 mm	450 mm	624 mm		
UAB25SHNA1	UAB25OHNA1	UAB25SHBA1	UAB25OHBA1	594 X 841 mm	624 mm	871 mm	1005 mm	1050 mm
UAB25SHNB2	UAB25OHNB2	UAB25SHBB2	UAB25OHBB2	500 X 700 mm	530 mm	730 mm	905 mm	950 mm
UAB25SHNB1	UAB25OHNB1	UAB25SHBB1	UAB25OHBB1	700 X 1000 mm	730 mm	1030 mm	1100 mm	1200 mm
UAB25SHN22	UAB25OHN22	UAB25SHB22	UAB25OHB22	22" X 28"	21.97"	29.17"	35.63"	37.40"
UAB25SHN24	UAB25OHN24	UAB25SHB24	UAB25OHB24	24" X 36"	25.20"	37.20"	43.31"	47.24"

ECO A BOARD OUTDOOR : Galvanized Backing + Mill Finish Legs PROFILE : 32 mm								
MITRED SILVER	MITRED BLACK	ROUND SILVER	SAFE CORNER	POSTER	X	Y	H1	H2
UAB32SHNA2	UAB32SHBA2	UAB32OHNA2	UAB32IHNA2	420 X 594 mm	463 mm	637 mm		
UAB32SHNA1	UAB32SHBA1	UAB32OHNA1	UAB32IHNA1	594 X 841 mm	637 mm	884 mm	1005 mm	1050 mm
UAB32SHNA0	UAB32SHBA0	UAB32OHNA0	UAB32IHNA0	841 X 1189 mm	884 mm	1232 mm		
UAB32SHNB2	UAB32SHBB2	UAB32OHNB2	UAB32IHNB2	500 X 700 mm	543 mm	743 mm	905 mm	950 mm
UAB32SHNB1	UAB32SHBB1	UAB32OHNB1	UAB32IHNB1	700 X 1000 mm	743 mm	1043 mm	1100 mm	1200 mm
UAB32SHN22	UAB32SHB22	UAB32OHN22	UAB32IH22	22" X 28"	22.48"	29.69"	35.63"	37.40"
UAB32SHN24	UAB32SHB24	UAB32OHN24	UAB32IH24	24" X 36"	25.20"	37.20"	43.31"	47.24"

WEIGHT	PACKING SIZE
WITH PACKING	*W X H X D
	510 X 1000 X 80 mm
7,250 kg	720 X 1180 X 85 mm
5,850 kg	630 X 1100 X 85 mm
9,400 kg	800 X 1390 X 85 mm
12,897 lbs	27.17" X 43.31" X 3.35"
17,306 lbs	27.95" X 54.72" X 3.35"

HEADER: Indoor 25 mm			WEIGHT
25 MM	F1	F2	WITH PACKING
UYFT2500A2	449 mm	372 mm	459 X 430 mm
UYFT2500A1	623 mm	546 mm	633 X 430 mm
UYFT0000B2	529 mm	452 mm	539 X 430 mm
UYFT0000B1	729 mm	652 mm	739 X 430 mm
UYFT250022	23.15"	16.54"	0.881 lbs
UYFT250024	25.16"	16.54"	1.234 lbs

HEADER HOLDER		WEIGHT
25 MM	X	WITH PACKING
UYTT2500A2	392 mm	0,500 kg
UYTT2500A1	566 mm	0,600 kg
UYTT0000B2	472 mm	0,560 kg
UYTT0000B1	672 mm	0,650 kg
UYTT250022	20.12"	1.719 lbs
UYTT250024	22.36"	1.807 lbs

OPTIONAL ACCESSORIES



A Board header (4 mm PVC Foam).



A board basket A4 size to hang on scissors. UYTS3000A4



A Board wire header holder.

PHYSICAL DATA

Material
25mm or 32mm aluminium profile click clack snap open frame, PET anti-reflex poster cover, PS or galvanised metal backing. PVC Foam optional header.

Poster Material & Thickness
0,10 – 0,20 mm for standard product.
For 25 mm: Max poster thickness 2 mm for mitred corner, 1 mm for round corner.
For 32 mm: Max poster thickness 3 mm for mitred corner, 2 mm for round corner.
Any non-standard poster thicknesses should be indicated with order.

Surface Finish
Mill finished legs. Natural silver-anodized, or black in standard and various RAL colors available with antimicrobial powder coating for frame part. Call for custom color requests.

Recycled Content
Up to 70% recycled content used.

Warranty
All products are guaranteed for 3 years by MT Displays with below conditions:
[Warranty Conditions](#)

Installation Considerations
Single packed with an easy-to-understand instruction sheet. Heavy back panel provides stability. No tool assembly.
Header accessories are not included.
Should be ordered separate. Each unit has water drainage slots on bottom profiles. Eco A Boards are packed in a single box with an easy-to-understand instruction sheet. One set includes double sided snap open frames with 25mm profile for Indoor version or 32mm profile for Outdoor version, 2 anti-reflex poster covers, PS backing for Indoor version or galvanised metal backing for Outdoor version, hinges, and scissors for keeping the system stable. Each unit has water drainage slots on bottom profiles. No tool assembly. Optional Wire Header Holder, Header Board and Brochure Baskets are not included, should be ordered separately.

Storage Conditions
Goods should be stored at 0° to 25°C in a dry place. Store in the original package.

Design Considerations
Double-sided Pavement Sign with "Click Clack" snap-open design. Cost-saving with mill finished legs. Suitable for silk screen printing, max. letter height is 15mm for 25mm profile or 16 mm for 32mm profile. Suitable for A1, 500x700mm and 700x1000mm poster sizes with a sight angle that stops passers-by. Galvanised metal heavy back panel on Outdoor version provides stability.

Cleaning and Disinfecting
Clean your displays, with damp microfiber clothes, rinsed with simply water or warm, soapy or gentle shampooed water. Avoid using vinegar, abrasive, acidic, alcohol-based or heavy cleaners or cleaners containing Ammonia. Only after cleaning the product, if needed, simply apply disinfectant or sanitizer that is in compliance with your local guidelines and regulations.

PRINT TEMPLATES

A Eco Board Indoor - A2
Document Size: 430 x 604 mm (Includes Bleeds)
Finished Size: A2 (420 x 594 mm) [Print](#)

A Eco Board Indoor - A1
Document Size: 604 x 851 mm (Includes Bleeds)
Finished Size: A1 (594 x 841 mm) [Print](#)

A Eco Board Outdoor - A2
Document Size: 430 x 604 mm (Includes Bleeds)
Finished Size: A2 (420 x 594 mm) [Print](#)

A Eco Board Outdoor - A1
Document Size: 604 x 851 mm (Includes Bleeds)
Finished Size: A1 (594 x 841 mm) [Print](#)

A Eco Board Outdoor - A0
Document Size: 851 x 1199 mm (Includes Bleeds)
Finished Size: A0 (841 x 1189 mm) [Print](#)

A Eco Board Indoor - B2
Document Size: 510 x 710 (Includes Bleeds)
Finished Size: B2 (500 x 700 mm) [Print](#)

A Eco Board Indoor - B1
Document Size: 710 x 1010 (Includes Bleeds)
Finished Size: B1 (700 x 1000 mm) [Print](#)

A Eco Board Outdoor - B2
Document Size: 510 x 710 (Includes Bleeds)
Finished Size: B2 (500 x 700 mm) [Print](#)

A Eco Board Outdoor - B1
Document Size: 710 x 1010 (Includes Bleeds)
Finished Size: B1 (700 x 1000 mm) [Print](#)

A Eco Board Indoor - 22" x 28"
Document Size: 22.4" x 28.4" (Includes Bleeds)
Finished Size: 22" x 28" (558.8 x 711.2 mm)

A Eco Board Indoor - 24" x 36"
Document Size: 24.4" x 36.4" (Includes Bleeds)
Finished Size: 24" x 36" (609,6 x 914,4 mm)

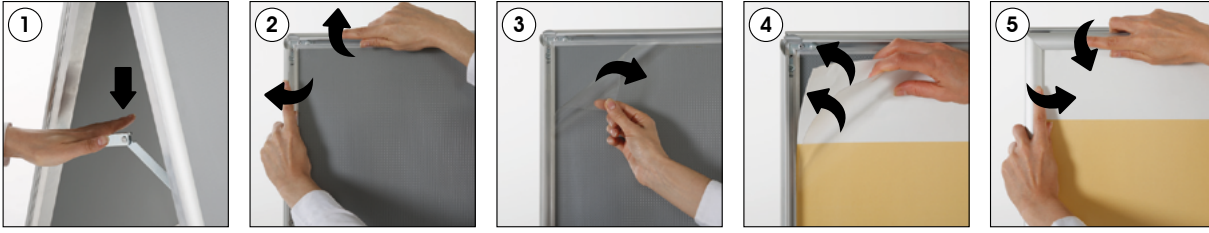
A Eco Board Outdoor - 22" x 28"
Document Size: 22.4" x 28.4" (Includes Bleeds)
Finished Size: 22" x 28" (558.8 x 711.2 mm)

A Eco Board Outdoor - 24" x 36"
Document Size: 24.4" x 36.4" (Includes Bleeds)
Finished Size: 24" x 36" (609,6 x 914,4 mm)



INSTALLATION INSTRUCTIONS

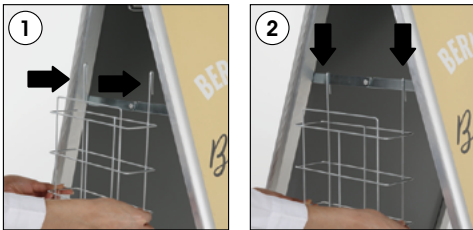
Eco A Board / 1007027



Optional Header & Header Holder



Optional Basket



Note: Wire header holder, PVC Foam header and baskets are optional.



- Please inform the order number on the product or on the carton (e.g. 1/110001394-460) to the place that you have made the purchase if any problem with the product occurs.
- All rights reserved. All pictures, figures and writings are secured internationally by copy-right law. Infringements will be sued by civil and legal law.

This technical sheet's contents are all subject to update and modification at MT Displays' exclusive discretion. There is nothing official about this document. For final and legally binding information, please get in touch with the sales staff at MT Displays.



T: +90 850 433 67 85 / info@mtdisplays.com / www.mtdisplays.com