

FLOOR STANDING REFERENCE RACK



DISPLAY YOUR BROCHURES ON A STABLE RACK WITH A HEAVY BASE

Heavy base Floor Standing Reference Rack System with capacity of 10 PET display pockets. Sturdy steel stand allows you to organize busy environments. Do not forget to order pockets separately. Holds 10 pockets at a time allowing to display 20 pages. Pockets are flip easy and double sided, allowing you to display 20 pages at a time.

KEY SELECTION ATTRIBUTES

- * Floor Standing Reference Rack with a heavy sturdy base and pole.
- * Allows extra brochure holder on the pole.
- * Capacity of holding 10 PET pockets in one top rack.
- * Double sided pockets allow to display 20 different pages.
- * Pockets are not included in the system.
- Pocket frames in three color options as red, black and grey.
- Please don't forget to order pockets & tab insets separately.



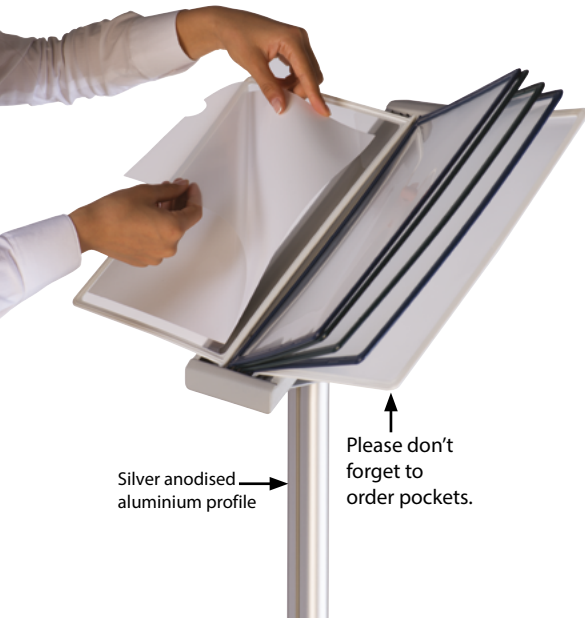
SUITABLE FOR

Reference Racks can be used for INDOOR applications, for signage needs in many locations like shopping centers, markets, hotels, offices airports, shops and stores, hospitals, schools, apartments and many more.

FEATURES



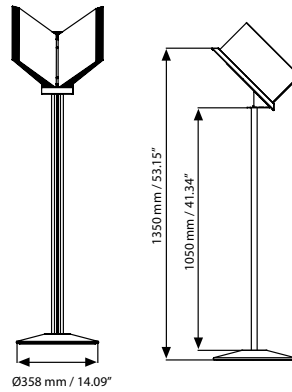
EXPLODED VIEW



Silver anodised aluminium profile

Please don't forget to order pockets.

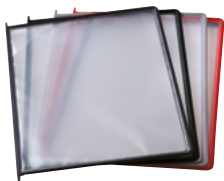
TECHNICAL DRAWING



ARTICLES

ARTICLE	PAPER SIZE	DESCRIPTION	WEIGHT	PACKING SIZE
			WITH PACKING	*W X H X D
URK05N00A4	210 X 297 mm	Silver Rack	9,200 kg	70 X 1120 X 40 mm / 380 X 390 X 50 mm 160 X 420 X 110 mm
URK05B00A4	210 X 297 mm	Black Rack	9,200 kg	70 X 1120 X 40 mm / 380 X 390 X 50 mm 160 X 420 X 110 mm

OPTIONAL ACCESSORIES



Red Black Grey

Please don't forget to order. 10 pcs of 1 colour in a box.

POSTER POCKET			WEIGHT	PACKING SIZE(10 Pcs)
ARTICLE	PAPER SIZE	DESCRIPTION	WITH PACKING	*W X H X D
TAB0590304	210 X 297 mm	Red	0,550 kg	390 X 550 X 590 mm
TAB0590301	210 X 297 mm	Black	0,550 kg	390 X 550 X 590 mm
TAB0590309	210 X 297 mm	Grey	0,550 kg	390 X 550 X 590 mm



Tab & Inset. Please don't forget to order. TAB5904003

PHYSICAL DATA

Material

Heavy steel base, aluminium profile post, metal connecting sheet, metal rack body sheet, plastic inserts, PET pockets with plastic frames..

Surface Finish

RAL9006 powder coated steel base, silver anodised aluminium profile post, metal connecting sheet, metal rack body sheet, plastic inserts, PET pockets with plastic frames.

Poster Material & Thickness

Poster Material & Thickness Poster Material & Thickness 0,2mm for standard product. Max poster thickness is 1mm. Any non-standard poster thicknesses should be indicated with order.

Warranty

All products are guaranteed for 1 years by MT Displays with below conditions: [Warranty Conditions](#)

Installation Considerations

Packed unassembled. Sturdy base for a stable and secure unit. Pockets and index tab&insets should be ordered separately. 3 packs. See info chart for pack sizes.

Storage Conditions

Goods should be stored at 0° to 25°C in a dry place. Store in the original package.

Design Considerations

Holds 10 pockets at a time. Pockets available in Red, Black and Grey. Double sided pockets allows to display 20 different pages.

Cleaning and Disinfecting

Clean your displays, with damp microfiber clothes, rinsed with simply water or warm, soapy or gentle shampooed water. Avoid using vinegar, abrasive, acidic, alcohol-based or heavy cleaners or cleaners containing Ammonia. Only after cleaning the product, if needed, simply apply disinfectant or sanitizer that is in compliance with your local guidelines and regulations.



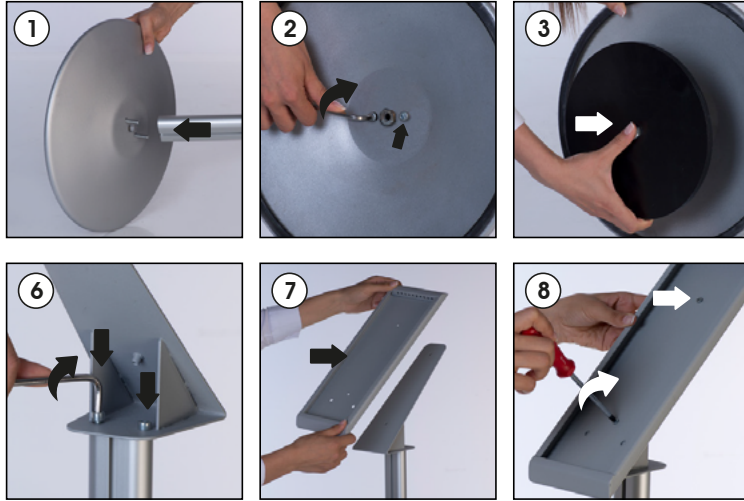
T: +90 850 433 67 85 / info@mtdisplays.com / www.mtdisplays.com

INSTALLATION INSTRUCTIONS

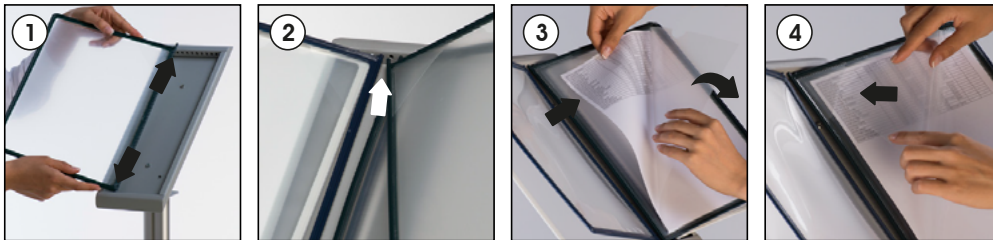
Floor Standing Reference Rack / 1009794H000

Each product package includes

- 1 x Main body profile
- 1 x Base Ø358x40 mm
- 1 x Base weight flange Ø230x10 mm
- 1 x Main body profile connecting sheet
- 1 x Reference Rack body sheet
- 2 x Bolt M6x15
- 2 x Bolt M4x10
- 2 x Bolt M6x25
- 1 x Bolt M10x30
- 1 x 5 Allen key



Attaching the Poster Pockets and Poster



CAUTION : PET Pockets are not included in the pack. Please don't forget to order. Pockets in 3 colours (red, black, gray). Each colour boxed in 10 pcs.



- Please inform the order number on the product or on the carton (e.g. 1/110001394-460) to the place that you have made the purchase if any problem with the product occurs.
- All rights reserved. All pictures, figures and writings are secured internationally by copy-right law. Infringements will be sued by civil and legal law.

This technical sheet's contents are all subject to update and modification at MT Displays' exclusive discretion. There is nothing official about this document. For final and legally binding information, please get in touch with the sales staff at MT Displays.



T: +90 850 433 67 85 / info@mtdisplays.com / www.mtdisplays.com