

FREE STANDING CONVEX BOX



DOUBLE-SIDED FREE-STANDING BOX WITH EASY SNAP OPEN DESIGN

Double sided display for indoor use. By the aid of snaps & hinged cover, one can easily change the poster on both sides. Brochure shelves can be added, if desired. Convex elegant look at eye-level to present your message.

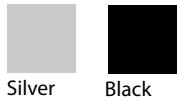
KEY SELECTION ATTRIBUTES

- * Double-sided, free-standing, convex design, poster box equipped with snap & hinged covers.
- * Front loading frames with snap open pressure profiles on long sides, PVC hinges on one side, magnetic covers & plastic pegs on both sides for easy poster replacement.
- * Suitable for INDOOR applications with A2 (420x594mm), A1 (594x841mm), B2 (500x700mm) and 20"x30" (508x762mm) poster sizes.
- * One set includes a double sided convex box body with a base plate suitable for fixing on a pole with screws, snap open aluminum frame profiles with magnetic tapes on long sides; 2 opal acrylic backings; 2 matt/clear anti-reflex magnetic PET poster covers; clips on corners to hold posters; a robust pole made from 70x30 mm anodised aluminium profile with 2 slide-in channels

- on both sides, a heavy decorative base made from Ø450mm steel for stability; allen keys and bolts for installation.
- * RAL9006 grey powder coated main body in standard and various RAL colors available with antimicrobial powder coating.
- * Backlit film or translucent poster material with a thickness of 0,2mm to 0,5mm should be used for printing the signage.
- * Heavy and stable base for public spaces.
- * Brochure shelves can be added, if desired. Shelves should be ordered separately.
- * Packed unasssembled in 3 packs with an easy-to-understand instruction sheet & fixing set. See info chart for pack sizes.

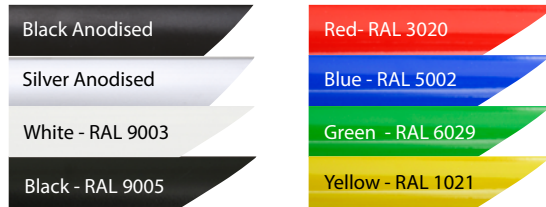


COLOURS IN STOCK



Silver Black

COLOUR OPTIONS



SUITABLE FOR

Free Standing Convex Boxes can be used for a wide range of INDOOR applications, for signage needs in many locations like retail point-of-purchase, tradeshow displays, movie theatres, sports facilities, shopping malls, markets, groceries, hotels, airports, shops and stores, hospitals, restaurants, halls, meeting, rooms, gas stations, casinos, and more.

WATCH VIDEO



Watch video at our website
www.mtdisplays.com

FEATURES



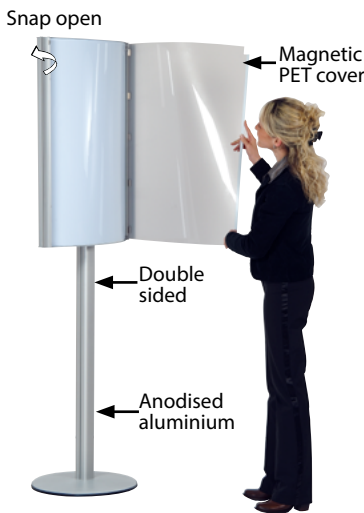
Double sided



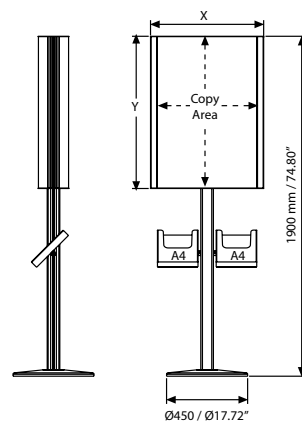
Pegs to hold poster



EXPLODED VIEW



TECHNICAL DRAWING



ARTICLES

| ARTICLE | SIZE | EXTERNAL (x-y) | POSTER | COPY | WEIGHT | PACKING SIZE |
|------------|-----------|-----------------|--------------|--------------|--------------|-------------------|
| | | | | | WITH PACKING | *W X H X D |
| UTTM014100 | A2 | 460 X 600 mm | 420 X 594 mm | 398 X 594 mm | 13,000 kg | 500 X 645 X 75 mm |
| | | | | | | 80 X 1180 X 80 mm |
| | | | | | | 490 X 490 X 50 mm |
| UTTM014000 | A1 | 625 X 846 mm | 594 X 841 mm | 572 X 841 mm | 14,000 kg | 675 X 890 X 75 mm |
| | | | | | | 80 X 1030 X 80 mm |
| | | | | | | 490 X 490 X 50 mm |
| UTTM014200 | B2 | 540 X 705 mm | 500 X 700 mm | 478 X 700 mm | 13,500 kg | 580 X 750 X 75 mm |
| | | | | | | 80 X 1180 X 80 mm |
| | | | | | | 490 X 490 X 50 mm |
| UTTM014300 | 20"x30" | 21.57" X 31.57" | 20" X 30" | 19.13" X 30" | 13,700 kg | 590 X 810 X 75 mm |
| | | | | | | 80 X 1180 X 80 mm |
| | | | | | | 490 X 490 X 50 mm |
| UTTM014301 | 18" X 24" | 19.57" X 25.57" | 18" X 24" | 17.13" X 24" | 29.762 lbs | |
| UTTM014302 | 24" X 36" | 25.57" X 37.57" | 24" X 36" | 23.13" X 36" | 32.628 lbs | |

PHYSICAL DATA

Material

Backlit film or translucent poster material with a thickness of 0,2mm to 0,5mm should be used for printing the signage.

Poster Material

Backlit film or translucent poster material with a thickness of 0,2mm to 0,5mm should be used for printing the signage.

Surface Finish

RAL9006 grey powder coated in standard and various RAL colors available with antimicrobial powder coating. Call for custom color requests.

Recycled Content

Up to 78% recycled content used.

Warranty

All products are guaranteed for 3 years by MT Displays with below conditions:

[Warranty Conditions](#)

Installation Considerations

Free Standing Convex Boxes are packed unasssembled in 3 packs with an easy-to-understand instruction sheet & fixing set. See info chart for pack sizes. One set includes a double sided steel convex box body with a base plate suitable for fixing on a pole with screws, snap open aluminum frame profiles with magnetic tapes on long sides; 2 opal acrylic backings; 2 matt/clear anti-reflex magnetic PET poster covers; clips on corners to hold posters; a robust pole made from 70x30 mm anodised aluminium profile with 2 slide-in channels on both sides, a heavy decorative base made from Ø450mm steel for stability; allen keys and bolts for installation. Brochure shelves can be added, if desired. Shelves should be ordered separately.

Design Considerations

Double-sided, free-standing, convex design, poster box equipped with snap & hinged covers. Front loading frames with snap open pressure profiles

on long sides, Front loading frames with snap open pressure profiles on long sides, PVC hinges on one side, magnetic covers & plastic pegs on both sides for easy poster replacement. Suitable for INDOOR applications with A2 (420x594mm), A1 (594x841mm), B2 (500x700mm) and 20"x30" (508x762mm) poster sizes. Heavy and stable base for public spaces.

Cleaning and Disinfecting

Clean your displays, with damp microfiber clothes, rinsed with simply water or warm, soapy or gentle shampooed water. Avoid using vinegar, abrasive, acidic, alcohol-based or heavy cleaners or cleaners containing Ammonia. Only after cleaning the product, if needed, simply apply disinfectant or sanitizer that is in compliance with your local guidelines and regulations.



T: +90 850 433 67 85 / info@mtdisplays.com / www.mtdisplays.com

PRINT TEMPLATES

Free Standing Convex Box - A2

Document Size: 430 x 604 mm (Includes Bleeds)
 Finished Size: A2 (420 x 594 mm) [Print](#)

Free Standing Convex Box - B2

Document Size: 510 x 710 mm (Includes Bleeds)
 Finished Size: B2 (500 x 700 mm) [Print](#)

Free Standing Convex Box - 20"x30"

Document Size: 20.4" x 30.4" (Includes Bleeds)
 Finished Size: 20"x30" (508x762 mm) [Print](#)

Free Standing Convex Box - A1

Document Size: 604 x 851 mm (Includes Bleeds)
 Finished Size: A1 (594 x 841 mm) [Print](#)

Free Standing Convex Box - 18"x24"

Document Size: 18.4" x 24.4" (Includes Bleeds)
 Finished Size: 18"x24" (457.2x609.6 mm)

Free Standing Convex Box - 24"x36"

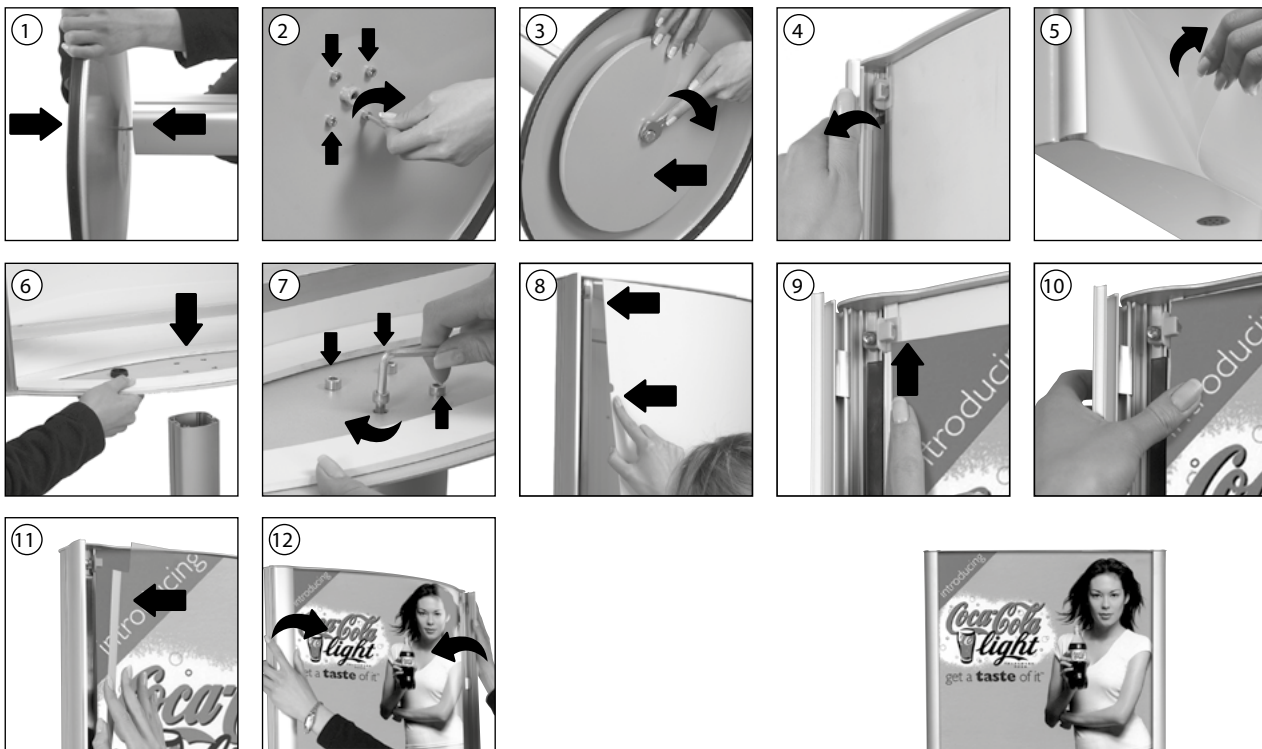
Document Size: 22.4" x 36.4" (Includes Bleeds)
 Finished Size: 24"x36" (609,6x914,4 mm)

INSTALLATION INSTRUCTIONS

Free Standing Convex Box / 1001978

Each product package includes mounting accessories

- 1 x Convex box body profile, 2 channel
- 1 x Convex box main body
- 1 x Convex box base
- 1 x Base weight flange Ø330x8 mm
- 2 x Opaque Acrylic
- 2 x PET cover
- 1 x 4 allen key
- 1 x 5 allen key
- 4 x Bolt M6x30
- 4 x Bolt M6x25
- 1 x Bolt M10x30



- Please inform the order number on the product or on the carton (e.g.1/110001394-460) to the place that you have made the purchase if any problem with the product occurs.
- All rights reserved. All pictures, figures and writings are secured internationally by copy-right law. Infringements will be sued by civil and legal law.

This technical sheet's contents are all subject to update and modification at MT Displays' exclusive discretion. There is nothing official about this document. For final and legally binding information, please get in touch with the sales staff at MT Displays.

