

LEDA ILLUMINATED MAGNETIC TOTEM



DOUBLE-SIDED FREE-STANDING LIGHT COLUMNS WITH SLIM DESIGN

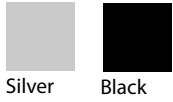
Indoor large display, LEDA is a slim LED illuminated totem. High quality LEDA provides bright images with high illumination. Magnetic polycarboncover has a hidden access so it prevents from public access easily. It is made of powder coated steel base and aluminium profiles to provide stability. Easy to assemble with enclosed mounting instructions.

KEY SELECTION ATTRIBUTES

- * Double-sided, free-standing, edge-lit light column equipped with practical magnetic polycarbon covers and long lasting LED technology bulbs.
- * Highly powerful and even illumination is achieved by improved LED technology and laser surface treatment, giving an impressive effect to grab the passers-by.
- * LED bulbs are not seen from outside, since they are embedded in sides of the frame.
- * Illumination save up to 60% energy cost (compared to fluorescent technology).
- * Suitable for INDOOR applications with 594x1682mm poster size.
- * One set includes a double sided Leda Totem main body made from aluminum profile frame with 37mm depth; embedded LED bulbs; specially treated 2mm acrylic backings to diffuse light across graphics; slide-in clips on frame to hold posters; 2 polycarbon covers with magnetic borders; 1 switch button on top profile; 1 powder coated heavy steel base plate with 6 mm thickness for stability; 1 Allen Key (4) and 3 Bolts M6 for installation; 1 power adapter with 2,5 meter long cable and 1 EU Plug. UK and US plugs are available, should be specified with order.
- * Hidden finger holes to take off the polycarbon covers prevents public access to the poster.
- * Supplied with quality certificates and CE/UL PAT test reports passed.
- * Black or RAL9006 grey powder coated main body in standard and various RAL colors available with antimicrobial powder coating.
- * Translucent poster material should be used for printing the signage.
- * Packed unasssembled in 2 boxes with an easy mounting instruction sheet. See info chart for pack sizes.

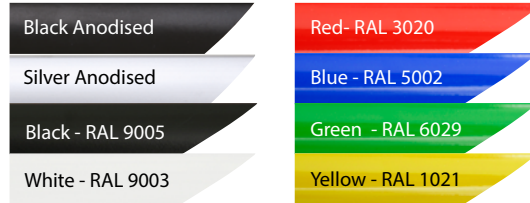


COLOURS IN STOCK



Silver Black

COLOUR OPTIONS



WATCH VIDEO

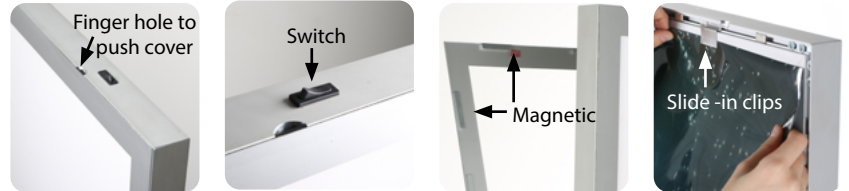


Watch video at our website
www.mtdisplays.com

SUITABLE FOR

Leda Totem Light Columns can be used for INDOOR applications, for signage needs in many locations like shopping centers, markets, groceries, hotels, offices airports, shops and stores, hospitals, schools, apartments, restaurants, halls, meeting rooms, gas stations and many more.

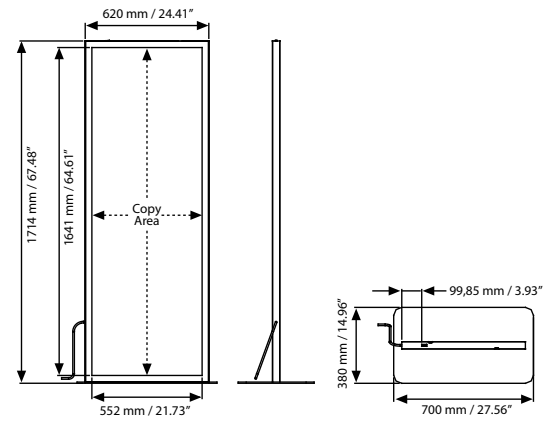
FEATURES



EXPLODED VIEW



TECHNICAL DRAWING



ARTICLES

| ARTICLE | DESCRIPTION | EXTERNAL (x-y) | POSTER | COPY | LIGHTING | WEIGHT | PACKING SIZE |
|------------|-------------|----------------|---------------|---------------|---------------|--------------|--|
| | | | | | | WITH PACKING | *W X H X D |
| UMLD37B000 | Black | 620 X 1708 mm | 594 X 1682 mm | 552 X 1641 mm | 1900-2100 LUX | 41,500 kg | 690 X 1800 X 85 mm / 410 X 740 X 30 mm |
| UMLD37N000 | Silver | 620 X 1708 mm | 594 X 1682 mm | 552 X 1641 mm | 1900-2100 LUX | 41,500 kg | 690 X 1800 X 85 mm / 410 X 740 X 30 mm |



T: +90 850 433 67 85 / info@mtdisplays.com / www.mtdisplays.com

PHYSICAL DATA

Material

Leda Totem main body with aluminium profile frame with 37 mm depth, acrylic backings, polycarbon poster covers with borders and magnets, LED bulbs, steel base plate.

Poster Material

Translucent poster material should be used for printing the signage.

Surface Finish

Black and RAL9006 grey powder coated in standard and various RAL colors available with antimicrobial powder coating. Call for custom color requests.

Recycled Content

Up to 78% recycled content used.

Warranty

All products are guaranteed for 2 years by MT Displays with below conditions:
[Warranty Conditions](#)

Storage Conditions

Goods should be stored at 0° to 25°C in a dry place. Store in the original package.

Installation Considerations

Leda Totem Light Columns are packed unasssembled in 2 boxes with an easy mounting instruction sheet. See info chart for pack sizes. Supplied with quality certificates and CE/UL PAT test reports passed. One set includes a double sided Leda totem main body made from aluminum profile frame with 37mm depth; embedded LED bulbs; specially treated 2mm acrylic backings to diffuse light across graphics; slide-in clips on frame to hold posters; 2 polycarbon covers with magnetic borders; 1 switch button on top profile; 1 powder coated heavy steel base plate with 6 mm thickness for stability; 1 Allen Key (4) and 3 Bolts M6 for installation; 1 power adapter with 2,5 meter long cable and 1 EU Plug. UK and US plugs are available, should be specified with order.

Installation Considerations

Leda Totem Light Columns are packed unasssembled in 2 boxes with an easy mounting instruction sheet. See info chart for pack sizes. Supplied with quality certificates and CE/UL PAT test reports passed. One set includes a double sided Leda totem main body made from aluminum profile frame with 37mm depth; embedded LED bulbs; specially treated 2mm acrylic backings to diffuse light across graphics; slide-in clips on frame to hold posters; 2 polycarbon covers with magnetic borders; 1 switch button on top profile; 1 powder coated heavy steel base plate with 6 mm thickness for stability; 1 Allen Key (4) and 3 Bolts M6 for installation; 1 power adapter with 2,5 meter long cable and 1 EU Plug. UK and US plugs are available, should be specified with order.

Cleaning and Disinfecting

Clean your displays, with damp microfiber clothes, rinsed with simply water or warm, soapy or gentle shampooed water. Avoid using vinegar, abrasive, acidic, alcohol-based or heavy cleaners or cleaners containing Ammonia. Only after cleaning the product, if needed, simply apply disinfectant or sanitizer that is in compliance with your local guidelines and regulations.

PRINT TEMPLATES

Leda Illuminated Magnetic Totem

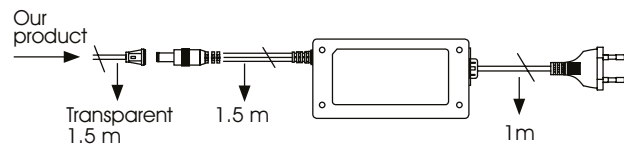
Document Size: 604 x 1692 mm (Includes Bleeds)

Finished Size: 594 x 1682 mm [Print](#)

ILLUMINATED PRODUCTS TECHNICAL MANUAL

POWER SUPPLY

- 12 V DC
- Complete with power supply
- 2 year guaranteed
- 7/16 use
- If 7/24 use required, please order individually.



CABLE

Delivered with 4 meter long cable and EU plug. UK, US or CH plugs should be specified with order.



TECHNICAL SPECIFICATION

| ARTICLE | POSTER | DESCRIPTION | ILLUMINATION | POWER CONSUMPTION | POWER SUPPLY RECOMMENDED |
|------------|---------------|-------------|---------------|-------------------|--------------------------|
| UMLD37B000 | 594 X 1682 mm | Black | 1900-2100 LUX | 65.28 W / 5.44 A | 6 A |
| UMLD37N000 | 594 X 1682 mm | Silver | 1900-2100 LUX | 65.28 W / 5.44 A | 6 A |

LED FEATURES (Duris E3)

Viewing angle at 50 % IV: 120°

Color: 2700 K - 6500 K (warm, neutral and cool white)

CRI: Min. 80

Luminous Flux: Typ. 30 lm @ 5000 K

Luminous efficacy: Typ. 153 lm/W @ 5000 K

Lumen Maintenance: Testing according to IESNA LM-80 in progress

Life Time : 50.000 Hours

Colour: 5700 K -6500 K (White)*

*For special inquired colour is available in 2700 K -6500 K



ASSEMBLY SHEET

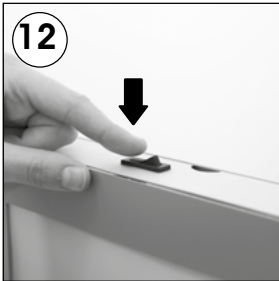
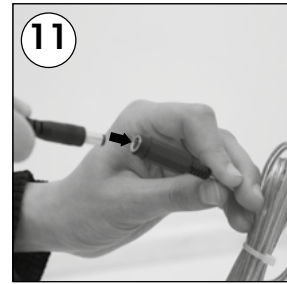
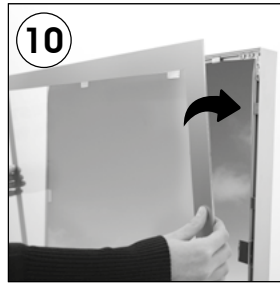
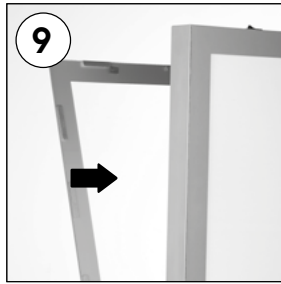
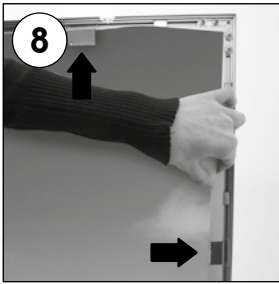
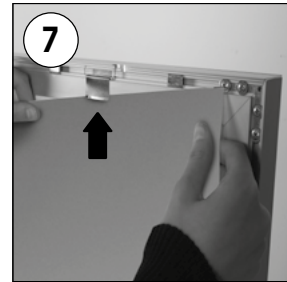
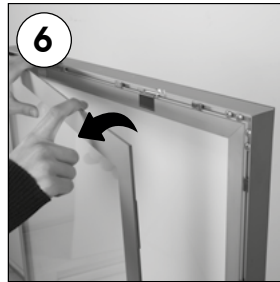
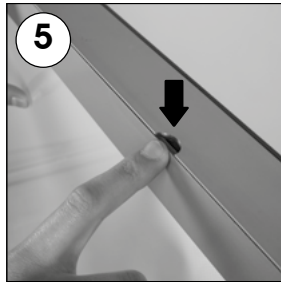
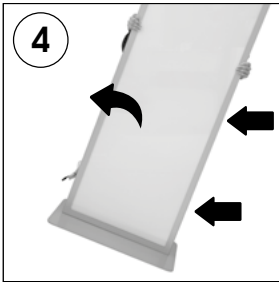
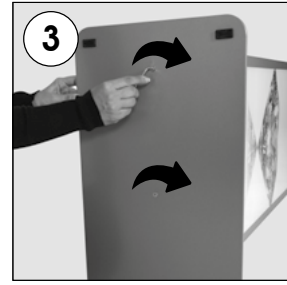
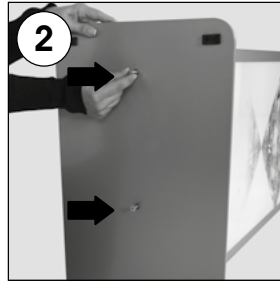
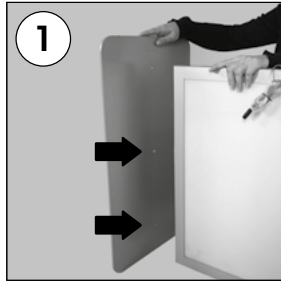


INSTALLATION INSTRUCTIONS

Leda Illuminated Magnetic Totem / 1010144H000

Each product package includes

- 1 x Base
- 1 x Leda Totem Main body
- 2 x Polycarbon Cover
- 1 x 4 Allen key
- 1 x Eu plug
- 1 x Power supply
AC100-240V-DC12V-6A-
GME72C-LV.VI
- 3 x Bolt M6x30



- Please inform the order number on the product or on the carton (e.g. 1/110001394-460) to the place that you have made the purchase if any problem with the product occurs.
- All rights reserved. All pictures, figures and writings are secured internationally by copy-right law. Infringements will be sued by civil and legal law.

This technical sheet's contents are all subject to update and modification at MT Displays' exclusive discretion. There is nothing official about this document. For final and legally binding information, please get in touch with the sales staff at MT Displays.



T: +90 850 433 67 85 / info@mtdisplays.com / www.mtdisplays.com