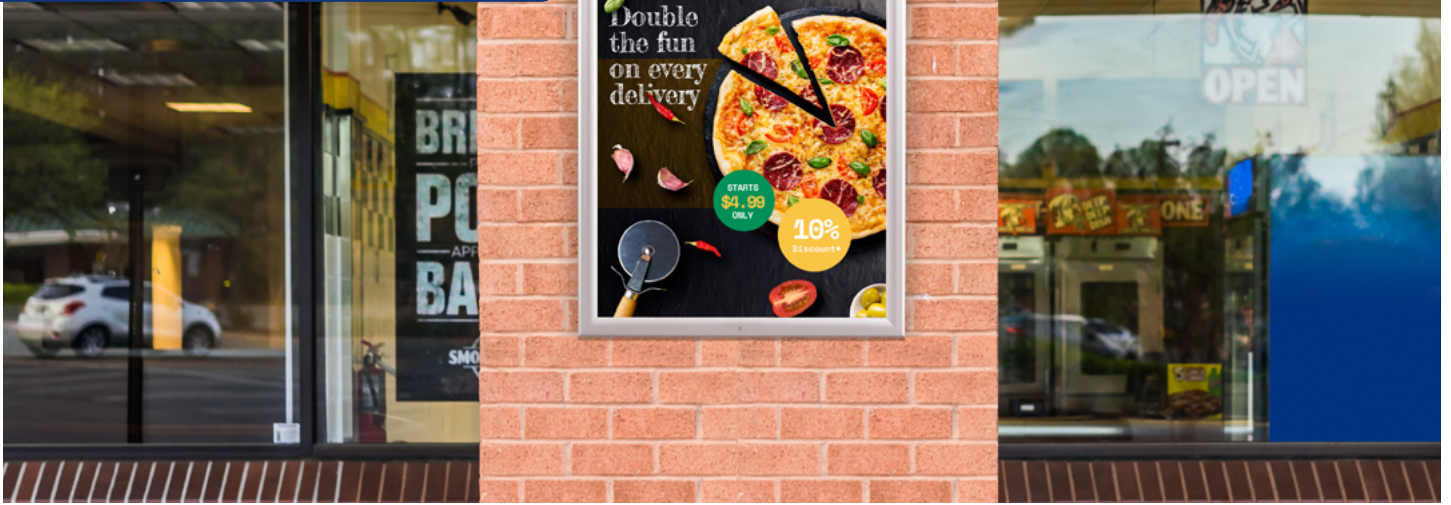


## LOCKABLE WEATHERPROOF FRAME



## ENSURE YOUR OUTDOOR POSTERS ARE NOT ACCESSED BY UNAUTHORIZED PARTIES

The weatherproof wall mountable poster frames have been manufactured with silver anodized finish aluminum profiles and inner rubber gaskets to achieve resistance from unfavourable weather conditions - this may include rain, dust, or other corrosive agents. The weatherproof outdoor frames have been specifically designed with an internal weather stripping facility that achieves the highest quality adhesive seal to guard against unwanted water damage and other harsh environmental conditions. These locking poster boards have been produced with the utmost consideration to safety, security and protection of your printed posters. Not only have the lockable snap frames been produced with tailor-made weather resistant design elements, but the aluminium display unit has been manufactured with a high security lock and key to guarantee safety of your printed posters. The lockable poster frame is simple to use with flip open sides. The four sides of the lockable frame open sequentially. The last profile is held in place with a screw on top that can be opened with its key. All you need to do is unlock the frame with the special allen key that is included with the product and snap open all four sides. Then you can place your printed poster and the plastic, clear non-glare cover over it and snap close. It only takes seconds to update your printed posters. This system ensures your poster is never accessed by unauthorized third parties. Clear, plastic, non-glare cover prevents glare as well as keeps your poster away from dust and dirt.

## KEY SELECTION ATTRIBUTES

- Anti-glare poster cover sheet.
- Ideal for various poster size
- Natural silver-anodized and various RAL colors available with antimicrobial powder coating.
- Standard mitred corners.
- Water drainage holes provide weatherproof availabilities.
- Weatherproof IP55
- Patented product (TR 2006 06254 PCT/TR06/000064)
- Secured with an Allen Key.
  - \* One allen key locks one side of frame and interlocks 3 sides.
  - \* Optional V-Hangers for easy mounting.



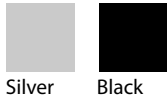
Silver



Black

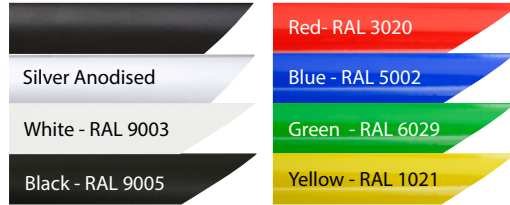


## COLOURS IN STOCK

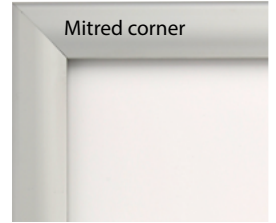


Silver Black

## COLOUR OPTIONS



## CORNER TYPES



## SUITABLE FOR

Lockable Weatherproof Frame can be used for INDOOR and OUTDOOR applications, for signage needs in many locations like shopping centers, markets, groceries, hotels, offices airports, shops and stores, hospitals, schools, apartments, museums, restaurants, theatres, commercial advertising and even art works and many more.

## WATCH VIDEO



Watch video at our website [www.mtdisplays.com](http://www.mtdisplays.com)

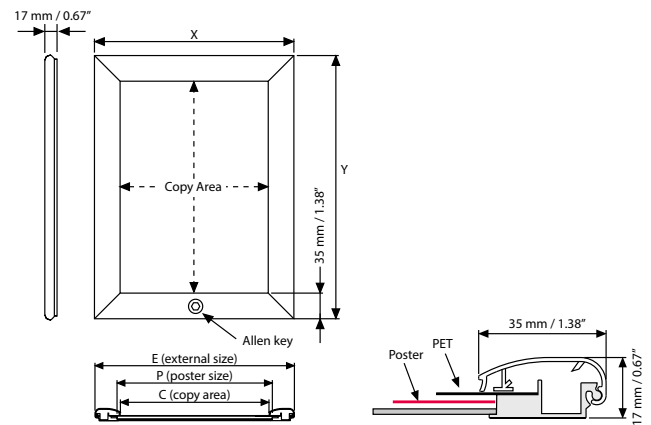
## FEATURES



## EXPLODED VIEW



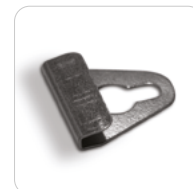
## TECHNICAL DRAWING



## ARTICLES

SILVER	BLACK	EXTERNAL (x-y)	POSTER	COPY	WEIGHT WITH PACKING	PACKING SIZE *W X H X D
UCV355N0A4	UCV355B0A4	276 X 363 mm	210 X 297 mm	206 X 293 mm	0,730 kg	280 X 365 X 23 mm
UCV355N0A3	UCV355B0A3	363 X 486 mm	297 X 420 mm	293 X 416 mm	1,105 kg	365 X 490 X 23 mm
UCV355N0A2	UCV355B0A2	486 X 660 mm	420 X 594 mm	416 X 590 mm	1,750 kg	490 X 670 X 23 mm
UCV355N0A1	UCV355B0A1	660 X 907 mm	594 X 841 mm	590 X 837 mm	2,990 kg	670 X 920 X 23 mm
UCV355N0A0	UCV355B0A0	907 X 1255 mm	841 X 1189 mm	837 X 1185 mm	5,820 kg	920 X 1270 X 23 mm
UCV355N0B2	UCV355B0B2	566 X 766 mm	500 X 700 mm	496 X 696 mm	2,330 kg	572 X 780 X 23 mm
UCV355N0B1	UCV355B0B1	766 X 1066 mm	700 X 1000 mm	696 X 996 mm	4,000 kg	780 X 1072 X 23 mm
UCV355N0B0	UCV355B0B0	1066 X 1466 mm	1000 X 1400 mm	996 X 1396 mm	7,240 kg	1072 X 1480 X 23 mm
UCV355N023	UCV355B023	22.60" X 32.60"	20" X 30"	19.84" X 29.84"	4.629 lbs	22.83" X 32.83" X 0.91"
UCV355N022	UCV355B022	24.60" X 30.60"	22" X 28"	21.84" X 27.84"	5.643 lbs	24.41" X 30.71" X 1.22"
UCV355N024	UCV355B024	26.60" X 38.60"	24" X 36"	23.84" X 35.84"	7.605 lbs	26.77" X 38.58" X 1.22"
UCV355N034	UCV355B034	32.60" X 42.60"	30" X 40"	29.84" X 39.84"	9.700 lbs	32.83" X 42.83" X 0.91"
UCV355N046	UCV355B046	42.60" X 62.60"	40" X 60"	39.84" X 59.84"	18.077 lbs	42.83" X 62.99" X 0.91"

## OPTIONAL ACCESSORIES



V Hanger / UYAA011010

Issue: 01 - 11/2024



T: +90 850 433 67 85 / [info@mtdisplays.com](mailto:info@mtdisplays.com) / [www.mtdisplays.com](http://www.mtdisplays.com)

## PHYSICAL DATA

### Material

35 mm aluminum profiles.  
PET poster cover, PS backing or ABS backing.  
Rubber Sealing.

### Poster Material & Thickness

0,10 – 0,20 mm for standard product. Max poster thickness is 2 mm. Any non-standard poster thicknesses should be indicated with order.

### Surface Finish

Silver anodized or black colour, antimicrobial powder coating. Custom colors also available, call for custom color requests.

### Recycled Content

Up to 78% recycled content used.

### Warranty

All products are guaranteed for 3 years by MT Displays with below conditions:  
[Warranty Conditions](#)

### Installation Considerations

Each frame includes an allen key to open the locked profile. Each frame includes wall fixing (4 screws & 4 plugs). "Optional hangers" permit easy mounting.

### Design Considerations

Suitable for silk screen printing, max. letter height is 16 mm.  
Please use the pull sticker to take off the cover.  
Please place the poster inside the water wick around the inner frame.

### Cleaning and Disinfecting

Clean your displays, with damp microfiber clothes, rinsed with simply water or warm, soapy or gentle shampooed water. Avoid using vinegar, abrasive, acidic, alcohol-based or heavy cleaners or cleaners containing Ammonia. Only after cleaning the product, if needed, simply apply disinfectant or sanitizer that is in compliance with your local guidelines and regulations.

### Certifications / Patents

TR 2006 06254  
PCT/TR06/000064

## PRINT TEMPLATES

### Lockable Weatherproof Frame - A4

Document Size: 220 x 307 mm (Includes Bleeds)  
Finished Size: A4 (210 x 297 mm) [Print](#)

### Lockable Weatherproof Frame - A3

Document Size: 307 x 430 mm (Includes Bleeds)  
Finished Size: A3 (297 x 420 mm) [Print](#)

### Lockable Weatherproof Frame - A2

Document Size: 430 x 604 mm (Includes Bleeds)  
Finished Size: A2 (420 x 594 mm) [Print](#)

### Lockable Weatherproof Frame - A1

Document Size: 604 x 851 mm (Includes Bleeds)  
Finished Size: A1 (594 x 841 mm) [Print](#)

### Lockable Weatherproof Frame - A0

Document Size: 851 x 1199 mm (Includes Bleeds)  
Finished Size: A0 (841 x 1189 mm) [Print](#)

### Lockable Weatherproof Frame - B2

Document Size: 510 x 710 mm (Includes Bleeds)  
Finished Size: B2 (500 x 700 mm) [Print](#)

### Lockable Weatherproof Frame - B1

Document Size: 710 x 1010 mm (Includes Bleeds)  
Finished Size: B1 (700 x 1000 mm) [Print](#)

### Lockable Weatherproof Frame - B0

Document Size: 1010 x 1410 mm (Includes Bleeds)  
Finished Size: B0 (1000 x 1400 mm) [Print](#)

### Lockable Weatherproof Frame 1.25" - 20"x30"

Document Size: 20.4" x 30.4" (Includes Bleeds)  
Finished Size: 20"x30" (508x762 mm) [Print](#)

### Lockable Weatherproof Frame 1.25" - 22"x28"

Document Size: 22.4" x 28.4" (Includes Bleeds)  
Finished Size: 22"x28" (558.8x711.2 mm)

### Lockable Weatherproof Frame 1.25" - 24"x36"

Document Size: 24.4" x 36.4" (Includes Bleeds)  
Finished Size: 24"x36" (609.6x914.4 mm)

### Lockable Weatherproof Frame 1.25" - 30"x40"

Document Size: 30.4" x 40.4" (Includes Bleeds)  
Finished Size: 30"x40" (762x1016 mm) [Print](#)

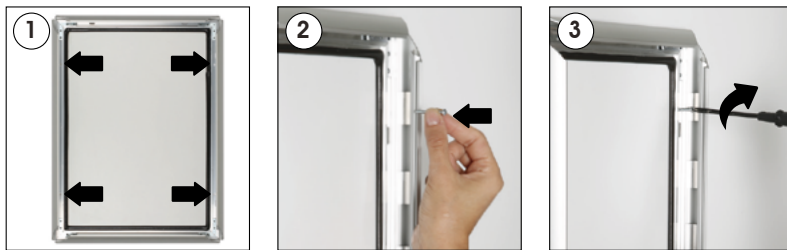
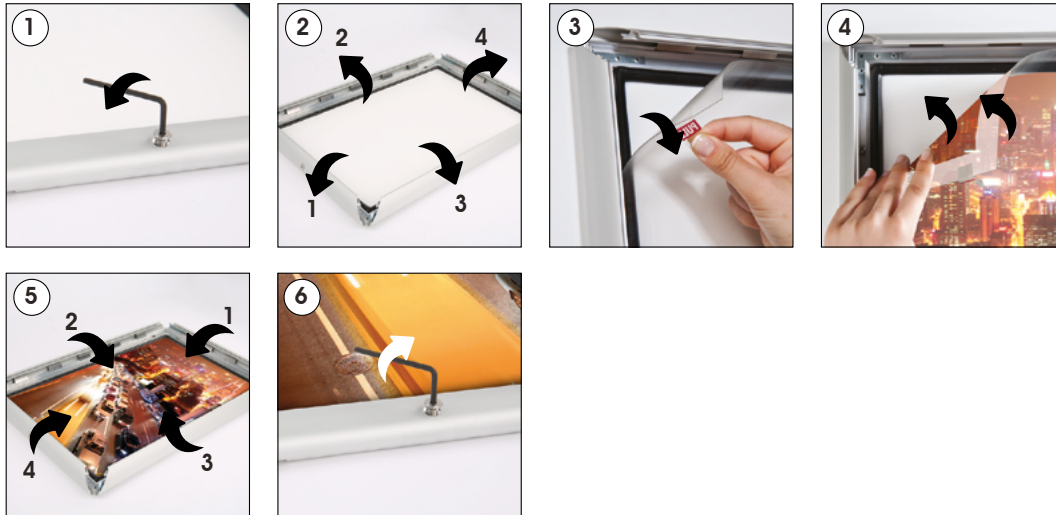
### Lockable Weatherproof Frame 1.25" - 40"x60"

Document Size: 40.4" x 60.4" (Includes Bleeds)  
Finished Size: 40"x60" (1016x1524 mm) [Print](#)



# INSTALLATION INSTRUCTIONS

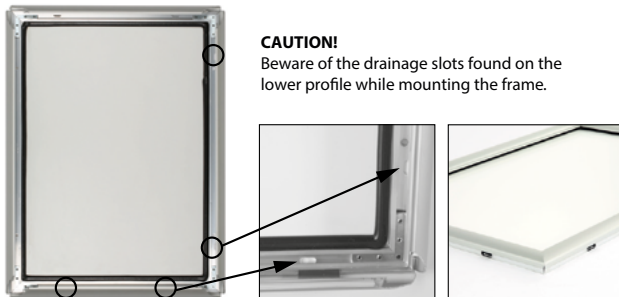
## Lockable Weatherproof Frame / 1001991



Screw & anchor mounting

Each frame includes an allen key to open the locked profile.

Each frame includes wall mounting accessories (4 screws & 4 anchors)



**CAUTION!**  
Beware of the drainage slots found on the lower profile while mounting the frame.



- Please inform the order number on the product or on the carton (e.g. 1/110001394-460) to the place that you have made the purchase if any problem with the product occurs.
- All rights reserved. All pictures, figures and writings are secured internationally by copy-right law. Infringements will be sued by civil and legal law.

This technical sheet's contents are all subject to update and modification at MT Displays' exclusive discretion. There is nothing official about this document. For final and legally binding information, please get in touch with the sales staff at MT Displays.



T: +90 850 433 67 85 / info@mtdisplays.com / www.mtdisplays.com