

LOCKABLE WEATHERPROOF SMART LEDBOX 35 MM SINGLE SIDED



LONG LASTING & LOCKABLE OUTDOOR AD SIGNS WITH HOMOGENOUS ILLUMINATION

Lockable weatherproof smart ledbox: Outdoor Smart LEDbox has been improved for using in public places with higher security. Sequentially opening profiles with an allen key keep your poster safe. High and even illumination gets consumer attention to your message.

KEY SELECTION ATTRIBUTES

- * Patent protected (PCT/EP2018/060515), weatherproof, single-sided, wall hanging, edge-lit lightbox with slim and sequentially opening lockable snap frame and long lasting LED technology bulbs.
- * Easy to load and re-load posters, with easy snap open framing. Simply snap up all four sides of the frame and easily insert your poster or take out.
- * Suitable for public OUTDOOR spaces requiring high security with lockable and sequentially opening profile frame for keeping the poster safer in A0, A1, A2, A3, A4, B0, B1, B2, 20"x30", 30"x40", 40"x60" poster sizes in portrait and landscape position with the help of moving hangers.
- * Overall product is in IP55 standard with water discharge slots on one short and one long profile and water leakage isolation inside. Electrical components are IP67 and CE listed.
- * The Lockable Weatherproof SMART LED BOX's lightweight, low voltage requirements allow it to be mounted anywhere there's access to a regular electrical outlet, and the unique frame extrusion offers a wide range of mounting and hanging options.
- * Improved LED technology and laser treatment to increase lighting efficiency.
- * Highly powerful illumination is achieved by specially treated acrylic and provides homogenous illumination in all sizes.
- * LED bulbs are not seen from outside, since they are embedded in sides of the frame.
- * Gives an impressive effect to grab the passers-by.
- * Saves up to 60% energy costs (compared to fluorescent technology) with an increased life expectancy.
- * Supplied with quality certificates and CE/UL PAT test reports passed.
- * Natural silver-anodized in standard and various RAL colors available with antimicrobial powder coating.
- * One set includes a single sided 35mm lockable snap open frame with sequentially opening function, inner water leakage isolation and water discharge slots on one short and one long profile for avoiding water built in the lower profile, 30mm depth and embedded LED bulbs; specially treated acrylic non-glare PET lens to diffuse light across graphics, 1 anti-reflex PET poster cover, 2 wall hangers, allen key for locking, 4 screws, 4 anchors, 1 weatherproof (IP67) power adapter and 2,5 meter long cable with 1 weatherproof EU Plug. UK and US plugs are available, should be specified with order. Cable length can be extended up to 7 meter by additional cables.
- * This LED frame has water discharge slots to avoid water built in the lower profile. Please make sure discharging slots on the lower profile when you assemble. It is available on one short profile and one long.
- * 2 wall hangers are standard in each product. Moving hangers let the mounting in portrait and landscape position.
- * Packed with an easy mounting instruction sheet & fixing hardware set.
- * Optional dimmer is available. Adjusting the light from dark to max lux of LED illuminated frame.
- * Mobile cable outlet helps moving by the edge and from the back of the aluminium box.
- * For using LED frame 24 hours in 7 days, please ask for special 7/24 power supplies.



COLOURS IN STOCK



Silver

COLOUR OPTIONS

Black Anodised

Silver Anodised

Black - RAL 9005

White - RAL 9003

Red- RAL 3020

Blue - RAL 5002

Green - RAL 6029

Yellow - RAL 1021

CORNER TYPES

Mitred corner

WATCH VIDEO

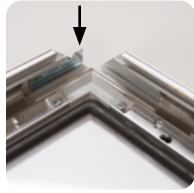


Watch video at our website
www.mtdisplays.com

SUITABLE FOR

Lockable Weatherproof Smart LEDbox can be used for a wide range of OUTDOOR applications, for signage needs in public places requiring high security like retail point-of-purchase, tradeshow displays, movie theatres, sports facilities, shopping malls, markets, groceries, hotels, airports, shops and stores, hospitals, restaurants, halls, meeting, rooms, gas stations, casinos, and more.

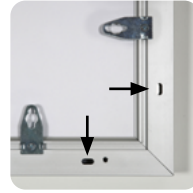
FEATURES



Lock corner component



Locking frame with allen key



Water drainage



Mobile cable outlet, from the edge and from the back of the aluminum box.

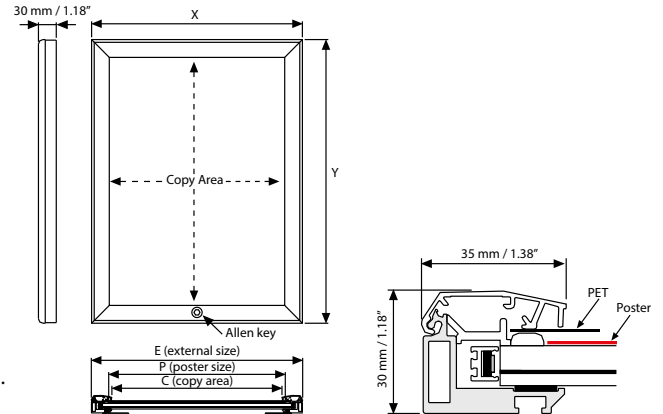


EXPLODED VIEW



2 wall hangers are standard in each product. Moving hangers let the mounting in portrait and landscape position.

TECHNICAL DRAWING



ARTICLES

ARTICLE	EXTERNAL (x-y)	POSTER SIZE	COPY	LIGHTING	WEIGHT	PACKING SIZE
					WITH PACKING	*W X H X D
ULH35TNOA4	271 X 358 mm	210 X 297 mm	201 X 288 mm	2600-2900 LUX	2,250 kg	320 X 520 X 83 mm
ULH35TNOA3	358 X 481 mm	297 X 420 mm	288 X 411 mm	2700-3000 LUX	3,660 kg	410 X 640 X 83 mm
ULH35TNOA2	481 X 655 mm	420 X 594 mm	411 X 585 mm	1800-2100 LUX	5,720 kg	530 X 820 X 83 mm
ULH35TNOA1	655 X 902 mm	594 X 841 mm	585 X 832 mm	1600-1900 LUX	9,700 kg	710 X 1070 X 83 mm
ULH35TNOA0	902 X 1250 mm	841 X 1189 mm	832 X 1180 mm	1200-1500 LUX	16,420 kg	960 X 1410 X 83 mm
ULH35TNOB2	561 X 761 mm	500 X 700 mm	491 X 691 mm	1600-1900 LUX	7,180 kg	710 X 920 X 83 mm
ULH35TNOB1	761 X 1061 mm	700 X 1000 mm	691 X 991 mm	1400-1700 LUX	12,455 kg	810 X 1220 X 83 mm
ULH35TNOB0	1061 X 1461 mm	1000 X 1400 mm	991 X 1391 mm	1000-1200 LUX	23,680 kg	1110 X 1620 X 83 mm
ULH35TNO22	24.41" X 30.43"	22" X 28"	21.65" X 27.68"	1600-1900 LUX	20.943 lbs	25.98" X 35.83" X 3.15"
ULH35TNO24	26.42" X 38.43"	24" X 36"	23.66" X 35.67"	1400-1700 LUX	25.353 lbs	27.95" X 43.90" X 3.15"
ULH35TNO34	32.40" X 42.40"	30" X 40"	29.65" X 39.65"	1400-1700 LUX	30.886 lbs	34.25" X 48.43" X 3.15"
ULH35TNO46	42.40" X 62.40"	40" X 60"	39.65" X 59.65"	1000-1200 LUX	59,238 lbs	44.09" X 68.90" X 3.15"

OPTIONAL ACCESSORIES



Optional dimmer to go with LED illuminated frame.. Simply jack the dimmer in frame and then into powersupply. It adjust the light from dark to max lux of LED illuminated frame. UYUP445550



T: +90 850 433 67 85 / info@mtdisplays.com / www.mtdisplays.com

PHYSICAL DATA

Material

35mm aluminium profile snap open frame with 30 mm depth, PET anti-reflex poster cover, acrylic backing, LED bulbs.

Poster Material & Thickness

0,10 – 0,20 mm for standard product. Max poster thickness 2 mm. Any non-standard poster thicknesses should be indicated with order.

Surface Finish

Natural silver-anodized in standard and various RAL colors available with antimicrobial powder coating. Call for custom color requests.

Recycled Content

Up to 78% recycled content used.

Warranty

All products are guaranteed for 2 years by MT Displays with below conditions:

[Warranty Conditions](#)

Storage Conditions

Goods should be stored at 0° to 25°C in a dry place. Store in the original package.

Installation Considerations

The Lockable Weatherproof SMART LED BOX is packed with an easy mounting instruction sheet & fixing hardware set. Supplied with quality certificates and CE/UL PAT test reports passed. One set includes a single sided 35mm lockable snap open frame with sequentially opening function, inner water leakage isolation and water discharge slots on one short and one long profile

for avoiding water built in the lower profile, 30mm depth and embedded LED bulbs; specially treated acrylic non-glare PET lens to diffuse light across graphics, 1 anti-reflex PET poster cover, 2 wall hangers, allen key for locking, 4 screws, 4 anchors, 1 weatherproof (IP67) power adapter and 2,5 meter long cable with 1 weatherproof EU Plug. UK and US plugs are available, should be specified with order. Cable length can be extended up to 7 meter by additional cables. Optional dimmer is available, adjusting the light from dark to max lux of LED illuminated frame. For using LED frame 24 hours in 7 days, please ask for special 7/24 power supplies. This LED frame has water discharge slots to avoid water built in the lower profile. Please make sure discharging slots on the lower profile when you assemble. It is available on one short profile and one long. Suitable for maximum 35°C temperature.

Design Considerations

Patent protected (PCT/EP2018/060515), weatherproof, single-sided, wall hanging, edge-lit lightbox with slim and sequentially opening lockable snap frame and long lasting LED technology bulbs. Suitable for public OUTDOOR spaces requiring high security with lockable and sequentially opening profile frame for keeping the poster safer in A0, A1, A2, A3, A4, B0, B1, B2, 20"x30", 30"x40", 40"x60" sizes in portrait and landscape position with the help of moving hangers. Overall product is in IP55 standard with water discharge slots on one short and one long profile and water leakage isolation inside. Electrical components are IP67 and CE listed. Highly powerful illumination is achieved by specially treated acrylic and provides homogenous

illumination in all sizes. Improved LED technology and laser treatment to increase lighting efficiency. LED bulbs are not seen from outside, since they are embedded in sides of the frame. Translucent poster material should be used for printing the signage. Gives an impressive effect to grab the passers-by. Saves up to 60% energy costs (compared to fluorescent technology) with an increased life expectancy. Easy to load and re-load posters, with easy snap open framing. Simply snap up all four sides of the frame and easily insert your poster or take out. Mobile cable outlet helps moving by the edge and from the back of the aluminium box. The Lockable Weatherproof SMART LED BOX's lightweight, low voltage requirements allow it to be mounted anywhere there's access to a regular electrical outlet, and the unique frame extrusion offers a wide range of mounting and hanging options. 2 wall hangers are standard in each product. Moving hangers let the mounting in portrait and landscape position. Suitable for silk screen printing, max. letter height is 20 mm.

Cleaning and Disinfecting

Clean your displays, with damp microfiber clothes, rinsed with simply water or warm, soapy or gentle shampooed water. Avoid using vinegar, abrasive, acidic, alcohol-based or heavy cleaners or cleaners containing Ammonia. Only after cleaning the product, if needed, simply apply disinfectant or sanitizer that is in compliance with your local guidelines and regulations.

Patent

PCT/EP2018/060515

PRINT TEMPLATES

Lockable Weatherproof Smart LEDbox

35 mm Single Sided - A4

Document Size: 220 x 307 mm (Includes Bleeds)

Finished Size: A4 (210 x 297 mm) [Print](#)

Lockable Weatherproof Smart LEDbox

35 mm Single Sided - A3

Document Size: 307 x 430 mm (Includes Bleeds)

Finished Size: A3 (297 x 420 mm) [Print](#)

Lockable Weatherproof Smart LEDbox

35 mm Single Sided - A2

Document Size: 430 x 604 mm (Includes Bleeds)

Finished Size: A2 (420 x 594 mm) [Print](#)

Lockable Weatherproof Smart LEDbox

35 mm Single Sided - A1

Document Size: 604 x 851 mm (Includes Bleeds)

Finished Size: A1 (594 x 841 mm) [Print](#)

Lockable Weatherproof Smart LEDbox

35 mm Single Sided - A0

Document Size: 851 x 1199 mm (Includes Bleeds)

Finished Size: A0 (841 x 1189 mm) [Print](#)

Lockable Weatherproof Smart LEDbox

35 mm Single Sided - B2

Document Size: 510 x 710 mm (Includes Bleeds)

Finished Size: B2 (500 x 700 mm) [Print](#)

Lockable Weatherproof Smart LEDbox

35 mm Single Sided - B1

Document Size: 710 x 1010 mm (Includes Bleeds)

Finished Size: B1 (700 x 1000 mm) [Print](#)

Lockable Weatherproof Smart LEDbox

35 mm Single Sided - B0

Document Size: 1010 x 1410 mm (Includes Bleeds)

Finished Size: B0 (1000 x 1400 mm) [Print](#)

Lockable Weatherproof Smart LEDbox

35 mm Single Sided - 22"x28"

Document Size: 22.4" x 28.4" (Includes Bleeds)

Finished Size: 22"x28" (558.8x711.1 mm) [Print](#)

Lockable Weatherproof Smart LEDbox

35 mm Single Sided - 24"x36"

Document Size: 24.4" x 36.4" (Includes Bleeds)

Finished Size: 24"x36" (609.6x914.4 mm) [Print](#)

Lockable Weatherproof Smart LEDbox

35 mm Single Sided - 30"x40"

Document Size: 30.4" x 40.4" (Includes Bleeds)

Finished Size: 30"x40" (762x1016 mm) [Print](#)

Lockable Weatherproof Smart LEDbox

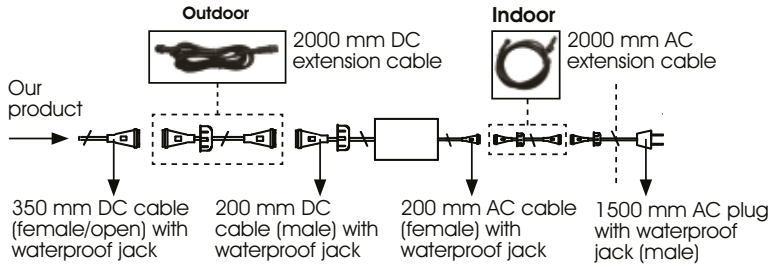
35 mm Single Sided - 40"x60"

Document Size: 40.4" x 60.4" (Includes Bleeds)

Finished Size: 40"x60" (1016x1524 mm) [Print](#)



POWER SUPPLY



CABLE

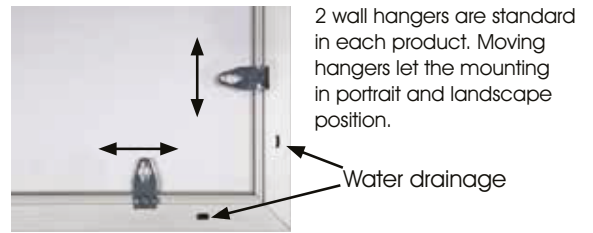
Delivered with 2,5 meter long cable and EU plug. UK, US or CH plugs should be specified with order.



TECHNICAL SPECIFICATION

ARTICLE	POSTER	ACRYLIC THICKNESS	ILLUMINATION	POWER CONSUMPTION	POWER SUPPLY RECOMMENDED
ULH35TN0A4	210 X 297 mm	6+6 mm	2600-2900 LUX	12 W / 1 A	2 A
ULH35TN0A3	297 X 420 mm	6+6 mm	2700-3000 LUX	18 W / 1.44 A	2 A
ULH35TN0A2	420 X 594 mm	6+6 mm	1800-2100 LUX	23 W / 1.91 A	3 A
ULH35TN0A1	594 X 841 mm	6+6 mm	1600-1900 LUX	35 W / 2.83 A	4 A
ULH35TN0A0	841 X 1189 mm	6+6 mm	1200-1500 LUX	48 W / 4 A	5 A
ULH35TN0B2	500 X 700 mm	6+6 mm	1600-1900 LUX	27 W / 2.24 A	3 A
ULH35TN0B1	700 X 1000 mm	6+6 mm	1400-1700 LUX	41 W / 3.33 A	4 A
ULH35TN0B0	1000 X 1400 mm	6+6 mm	1000-1200 LUX	58 W / 4.8 A	6 A
ULH35TN023	508 X 762 mm	6+6 mm	1600-1900 LUX	31 W / 2.56 A	4 A
ULH35TN034	762 X 1016 mm	6+6 mm	1400-1700 LUX	41 W / 3.36 A	4 A
ULH35TN046	1016 X 1524 mm	6+6 mm	1000-1200 LUX	60 W / 5 A	6 A

HANGER



FEATURES

- Improved Led technology for improved luminance.
- Pre-treated light guided panel diffuses light even & powerful.
- Saves up to 60% energy costs.
- CE certificate provided.
- The lightweight SMART LED BOX with slim profile design and low voltage requirements allow mounting at any given point with access to a regular electrical outlet. The unique frame extrusion offers a wide range of mounting or hanging options.

LED FEATURES (Duris E5)

Viewing angle at 50 % IV: 120°

Color: 2700 K - 6500 K (white)

CRI: Min. 80 (typ. 85)

Luminous Flux: Typ. 56 lm @ 5000 K

Luminous efficacy: Typ. 156 lm/W @ 5000 K

Luminous efficacy @ 65m A: Typ. 170 lm/W @ 5000 K

Lumen Maintenance: Testing according to IESNA LM-80 in progress

Life Time : 50.000 Hours

Colour: 5700 K -6500 K (White)*

*For special inquired colour is available in 2700 K -6500 K

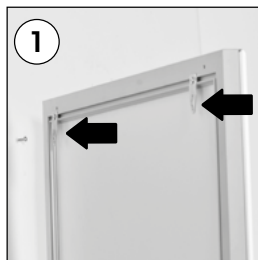


ASSEMBLY SHEET

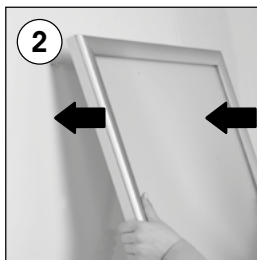


INSTALLATION INSTRUCTIONS

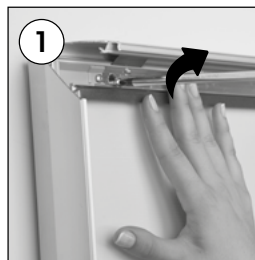
Lockable Weatherproof Smart LEDbox 35 mm Single Sided / 1007613



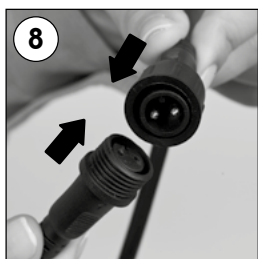
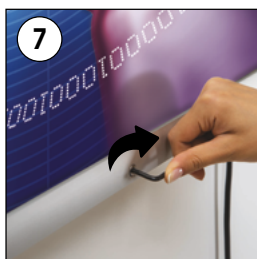
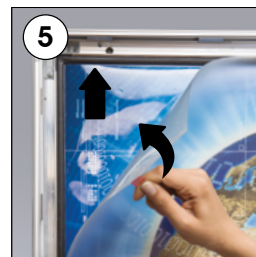
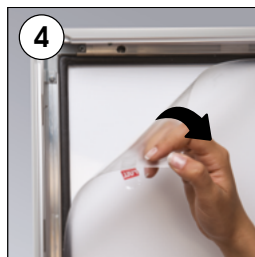
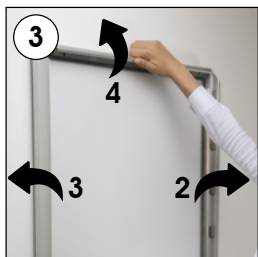
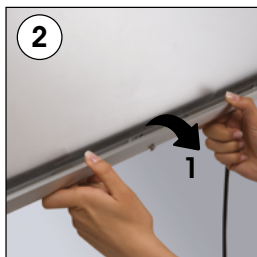
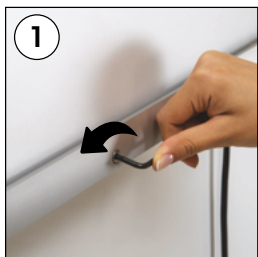
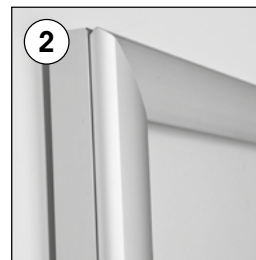
Hanger mounting



Landscape or portrait positions



Screw & anchor mounting



Each product package includes

- 1 x PET cover
- 2 x Hanger
- 1 x 3 allen key
- 4 x Screw
- 4 x Anchor
- 1 x Power Adapter AC100-240V-DC12V-3A (Weatherproof)
- 1 x EU Plug (Weatherproof)

Make sure discharge slots on the lower profile

Mobile cable outlet, from the edge and from the back of the aluminum box.

Caution !

- 1- Do not step on the light panel nor place the heavy object on the light panel.
- 2- Do not pull the cable with excessive force.
- 3- Use correct capacity and voltage of D.C. power supply.
Failure to observe this instruction could result in breakdown.
- 4- Do not touch the light panel or electrical devices with wet hand.
Failure to observe this instruction could result in electrical shocks and severe injuries.
- 5- Do not subject this light panel to outdoor, high humid and vaporized area.
Failure to observe this instruction could result in breakdown.
- 6- Keep this out of the direct rays of the sun.
Failure to observe this instruction could result in color changes of acrylic plate.
- 7- Keep away from fire or severe hot place. Acceptable ambient temperature is max.35°C
Failure to observe this instruction could result in shorten the life time and degradation of brightness of LED light source.

- Please inform the order number on the product or on the carton (e.g. 1/110001394-460) to the place that you have made the purchase if any problem with the product occurs.
- All rights reserved. All pictures, figures and writings are secured internationally by copy-right law. Infringements will be sued by civil and legal law.



This technical sheet's contents are all subject to update and modification at MT Displays' exclusive discretion. There is nothing official about this document. For final and legally binding information, please get in touch with the sales staff at MT Displays.



T: +90 850 433 67 85 / info@mtdisplays.com / www.mtdisplays.com