

MAGNECO LEDBOX DOUBLE SIDED



NEW GENERATION AD SIGNS WITH SLIM DESIGN AND HOMOGENOUS ILLUMINATION

Magneco LEDbox: A new generation in LEDboxes. With a practical magnetic protection cover, it is very easy to change the poster. High illumination level attracts consumers to the message. The lightweight Magneco double sided and low voltage requirements allow mounting at any given point with access to a regular electrical outlet.

KEY SELECTION ATTRIBUTES

- * Double-sided, ceiling hanging, edge-lit lightbox with practical magnetic acrylic lens covers and long lasting LED technology bulbs.
- * One of the slimmest double-sided lightboxes in the market with 20mm profile depth.
- * Suitable for INDOOR applications with 11" x 17", 20" x 30", 22" x 28", 24" x 36", 30" x 40", A0, A1, A2, A3, A4, B1, B2 poster sizes in optional portrait and landscape position.
- * High illumination is achieved by improved LED technology and laser surface treatment, giving an impressive effect to grab the passers-by.
- * Translucent poster material should be used for printing the signage.
- * LED bulbs are not seen from outside, since they are embedded in sides of the frame.
- * LED illumination save up to 60% energy costs (compared to fluorescent technology with an increased life expectancy).
- * Supplied with Quality Certificates and CE/UL PAT test reports passed.
- * Black and natural silver-anodized frame with black border in standard and various RAL colors available.
- * One set includes a double sided frame with 20mm depth, embedded LED bulbs and grooves on sides for hanging in landscape or portrait positions; specially treated 2mm acrylic covers with magnetic black border; acrylic backings to diffuse light across graphics; 2 ceiling hanger set, 2 wire cables Ø1.5 and 2m long, 2 M5 Hangers, 2 screws and 2 anchors for installation; 1 power adapter (12V-2A); 3,5 meter long cable and 1 EU Plug. UK and US plugs are available, should be specified with order.
- * Hidden finger hole to take off the acrylic covers prevents public access to the poster.
- * Has no switch button. Optional dimmer is available. Adjusting the light from dark to max lux of LED illuminated frame.
- * Long-term cost savings can be achieved with Magneco LED box double sided. They have a lifespan of more than 60,000 hours when utilized for 7-8 hours a day, seven days a week.
- * These illuminated frames are affordable for displaying movie posters, advertisement and translucent posters. For using LED frame 24 hours in 7 days, please ask for special 7/24 power supplies.
- * Packed with an easy mounting instruction sheet & fixing set.
- * Keep out of the direct rays of sun. Keep away from fire or severe hot place. Acceptable ambient temperature is max. 35°C.

One product,
two positions
(landscape&portrait)



Portrait



Landscape hanging grooves

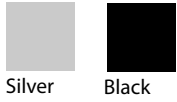


Portrait hanging grooves

Landscape



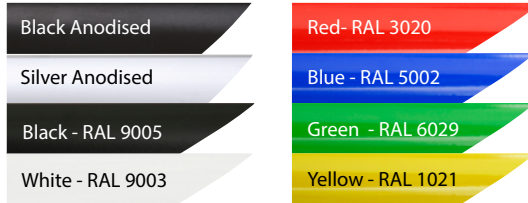
COLOURS IN STOCK



Silver

Black

COLOUR OPTIONS



WATCH VIDEO



Watch video at our website
www.mtdisplays.com

SUITABLE FOR

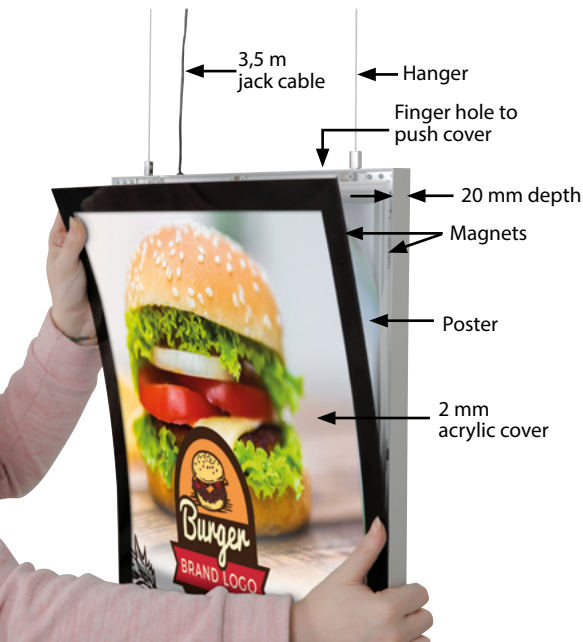
Magneco LED Box Double Sided can be used for a wide range of INDOOR applications, for signage needs in many locations like retail point-of-purchase, tradeshow displays, movie theatres, sports facilities, shopping malls, markets, groceries, hotels, airports, shops and stores, hospitals, restaurants, halls, meeting, rooms, gas stations, casinos, and more.

FEATURES



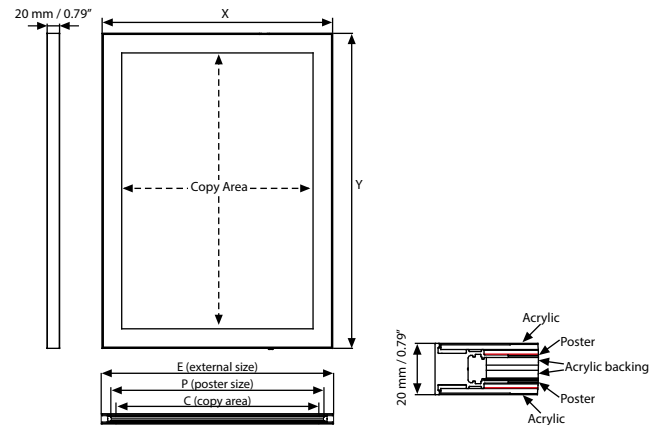
Finger hole to push cover

EXPLODED VIEW



Standard hanging kit for all sizes: 2 meters x 2 pcs wire cable and 2 ceiling hangers.

TECHNICAL DRAWING



ARTICLES

SILVER	BLACK	EXTERNAL (x-y)	POSTER SIZE	COPY	LIGHTING	WEIGHT	PACKING SIZE
						WITH PACKING	*W X H X D
ULDMENCBAA4	ULDMEBBCBA4	250 X 337 mm	210 X 297 mm	192 X 279 mm	2800-3000 LUX	1,770 kg	265 X 445 X 35 mm
ULDMENCBAA3	ULDMEBBCBA3	337 X 460 mm	297 X 420 mm	279 X 402 mm	2400-2600 LUX	2,850 kg	355 X 530 X 35 mm
ULDMENCBAA2	ULDMEBBCBA2	460 X 634 mm	420 X 594 mm	402 X 576 mm	2100-2300 LUX	4,750 kg	475 X 705 X 35 mm
ULDMENCBAA1	ULDMEBBCBA1	634 X 881 mm	594 X 841 mm	576 X 823 mm	1800-2000 LUX	9,250 kg	650 X 970 X 35 mm
ULDMENCBAA0	ULDMEBBCBA0	881 X 1229 mm	841 X 1189 mm	823 X 1171 mm	1200-1400 LUX	17,150 kg	895 X 1300 X 40 mm
ULDMENCBBA2	ULDMEBBCBB2	540 X 740 mm	500 X 700 mm	482 X 682 mm	2000-2200 LUX	6,250 kg	555 X 810 X 35 mm
ULDMENCBBA1	ULDMEBBCBB1	740 X 1040 mm	700 X 1000 mm	682 X 982 mm	1600-1800 LUX	12,380 kg	755 X 1100 X 35 mm
ULDMENCB17	ULDMEBBCB17	12.60" X 18.58"	11" X 17"	10.31" X 16.30"	2400-2600 LUX	6.459 lbs	13.39" X 21.26" X 1.38"
ULDMENCB22	ULDMEBBCB22	23.58" X 29.61"	22" X 28"	21.30" X 27.32"	1900-2100 LUX	15.278 lbs	24.41" X 32.28" X 1.38"
ULDMENCB23	ULDMEBBCB23	21.57" X 31.57"	20" X 30"	23.23" X 29.29"	2000-2200 LUX	15.101 lbs	22.24" X 34.25" X 1.38"
ULDMENCB24	ULDMEBBCB24	25.59" X 37.60"	24" X 36"	23.31" X 35.31"	1800-2000 LUX	22.068 lbs	26.38" X 40.35" X 1.38"
ULDMENCB34	ULDMEBBCB34	31.57" X 41.57"	30" X 40"	29.41" X 39.29"	1600-1800 LUX	29.982 lbs	32.28" X 44.29" X 1.38"

OPTIONAL ACCESSORIES



Optional dimmer to go with LED illuminated frame.. Simply jack the dimmer in frame and then into powersupply. It adjust the light from dark to max lux of LED illuminated frame. / UYUP445550



T: +90 850 433 67 85 / info@mtdisplays.com / www.mtdisplays.com

PHYSICAL DATA

Material

Aluminium profile frame with 20 mm depth and LED bulbs, specially treated acrylic clear lens with a magnetic black painted border, acrylic backing.

Poster Material

Translucent poster material should be used for printing the signage.

Surface Finish

Black and natural silver-anodized frame with black border in standard and various RAL colors available. Call for custom color requests.

Recycled Content

Up to 78% recycled content used.

Warranty

All products are guaranteed for 3 years by MT Displays with below conditions:

[Warranty Conditions](#)

Storage Conditions

Goods should be stored at 0° to 25°C in a dry place. Store in the original package.

Installation Considerations

Magneco LED Box Double Sided is packed with an easy mounting instruction sheet & fixing set. Supplied with Quality Certificates and CE/UL PAT test reports passed. One set includes a double sided frame with 20mm depth, embedded LED bulbs and grooves on sides for hanging in landscape or portrait positions; specially treated 2mm acrylic covers with magnetic black border; acrylic backings to diffuse light across graphics; 2 ceiling hanger set, 2 wire cables Ø1.5 and 2m long, 2 M5 Hangers, 2 screws and 2 anchors for installation; 1 power adapter (12V-2A); 3,5 meter long cable and 1 EU Plug. UK and US plugs are available, should be specified with order. Hidden finger hole to take off the acrylic cover prevents public access to the poster. Has no switch button. Optional dimmer is available. Adjusting the light from dark to max lux of LED illuminated frame. Has a lifespan of more than 60,000 hours when utilized for 7-8 hours a day, seven days a week. For using LED frame 24 hours in 7 days, please ask for special 7/24 power supplies. Keep out of the direct rays of sun. Keep away from fire or severe hot place. Acceptable ambient temperature is max. 35°C.

Design Considerations

Double-sided, ceiling hanging, edge-lit lightbox with practical magnetic acrylic lens covers and long lasting LED technology bulbs. One of the slimmest double-sided lightboxes in the market with 20mm profile depth. Suitable for INDOOR applications with 11" x 17", 20" x 30", 22" x 28", 24" x 36", 30" x 40", A0, A1, A2, A3, A4, B1, B2 poster sizes in optional portrait and landscape position. High illumination is achieved by improved LED technology and laser surface treatment, giving an impressive effect to grab the passers-by. LED bulbs are not seen from outside, since they are embedded in sides of the frame. LED illumination save up to 60% energy costs (compared to fluorescent technology with an increased life expectancy).

Cleaning and Disinfecting

Clean your displays, with damp microfiber clothes, rinsed with simply water or warm, soapy or gentle shampooed water. Avoid using vinegar, abrasive, acidic, alcohol-based or heavy cleaners or cleaners containing Ammonia. Only after cleaning the product, if needed, simply apply disinfectant or sanitizer that is in compliance with your local guidelines and regulations.

PRINT TEMPLATES

Magneco LEDBox Double Sided - A4

Document Size: 220 x 307 mm (Includes Bleeds)
Finished Size: A4 (210 x 297 mm) [Print](#)

Magneco LEDBox Double Sided - A3

Document Size: 307 x 430 mm (Includes Bleeds)
Finished Size: A3 (297 x 420 mm) [Print](#)

Magneco LEDBox Double Sided - A2

Document Size: 430 x 604 mm (Includes Bleeds)
Finished Size: A2 (420 x 594 mm) [Print](#)

Magneco LEDBox Double Sided - A1

Document Size: 604 x 851 mm (Includes Bleeds)
Finished Size: A1 (594 x 841 mm) [Print](#)

Magneco LEDBox Double Sided - A0

Document Size: 851 x 1199 mm (Includes Bleeds)
Finished Size: A0 (841x 1189 mm) [Print](#)

Magneco LEDBox Double Sided - B2

Document Size: 510 x 710 mm (Includes Bleeds)
Finished Size: B2 (500 x 700 mm) [Print](#)

Magneco LEDBox Double Sided - B1

Document Size: 710 x 1010 mm (Includes Bleeds)
Finished Size: B1 (700 x 1000 mm) [Print](#)

Magneco LEDBox Double Sided - 11"x17"

Document Size: 11.4" x 17.4" (Includes Bleeds)
Finished Size: 11"x17" (279.4x431.8 mm) [Print](#)

Magneco LEDBox Double Sided - 20"x30"

Document Size: 20.4" x 30.4" (Includes Bleeds)
Finished Size: 20"x30" (508x762 mm) [Print](#)

Magneco LEDBox Double Sided - 22"x28"

Document Size: 22.4" x 28.4" (Includes Bleeds)
Finished Size: 22"x28" (558.8x711.1 mm) [Print](#)

Magneco LEDBox Double Sided - 24"x36"

Document Size: 24.4" x 36.4" (Includes Bleeds)
Finished Size: 24"x36" (609.6x914.4 mm) [Print](#)

Magneco LEDBox Double Sided - 30"x40"

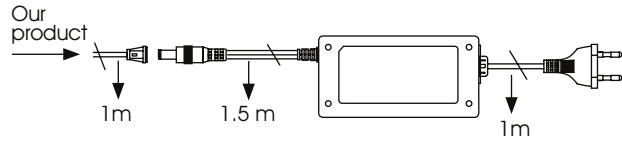
Document Size: 30.4" x 40.4" (Includes Bleeds)
Finished Size: 30"x40" (762x1016 mm) [Print](#)



ILLUMINATED PRODUCTS TECHNICAL MANUAL

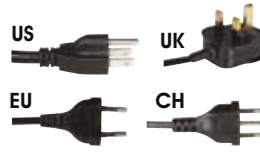
POWER SUPPLY

- 12 V DC
- Complete with power supply
- 2 year guaranteed
- 7/16 use
- If 7/24 use required, please order individually.



CABLE

Delivered with 3,5 meter long cable and EU plug. UK, US or CH plugs should be specified with order. Extension cable: 1 mm, 2 mm, 3 mm.



HANGER



2 wall hangers are standard in each product. Moving hangers let the mounting in portrait and landscape position.

TECHNICAL SPECIFICATION

SILVER ARTICLE	BLACK ARTICLE	POSTER	ACRYLIC THICKNESS	ILLUMINATION	POWER CONSUMPTION	POWER SUPPLY RECOMMENDED
ULDMENCBA4	ULDMEBCBA4	210 X 297 mm	3 mm	2800-3000 LUX	9.5 W / 0.79 A	1 A
ULDMENCBA3	ULDMEBCBA3	297 X 420 mm	3 mm	2400-2600 LUX	14 W / 1.15 A	2 A
ULDMENCBA2	ULDMEBCBA2	420 X 594 mm	3 mm	2100-2300 LUX	20 W / 1.66 A	2 A
ULDMENCBA1	ULDMEBCBA1	594 X 841 mm	4 mm	1800-2000 LUX	28.5 W / 2.38 A	3 A
ULDMENCBA0	ULDMEBCBA0	841 X 1189 mm	4 mm	1200-1400 LUX	40.5 W / 3.39 A	4 A
ULDMENCBB2	ULDMEBCBB2	500 X 700 mm	3 mm	2000-2200 LUX	24 W / 2 A	3 A
ULDMENCBB1	ULDMEBCBB1	700 X 1000 mm	4 mm	1600-1800 LUX	35 W / 2.9 A	4 A
ULDMENCB17	ULDMEBCB17	280 X 432 mm	3 mm	2400-2600 LUX	16.6 W / 1.22 A	2 A
ULDMENCB22	ULDMEBCB22	559 X 712 mm	4 mm	1900-2100 LUX	24 W / 2 A	3 A
ULDMENCB23	ULDMEBCB23	508 X 762 mm	3 mm	2000-2200 LUX	26 W / 2.16 A	3 A
ULDMENCB24	ULDMEBCB24	610 X 915 mm	4 mm	1800-2000 LUX	31 W / 2.6 A	3 A
ULDMENCB34	ULDMEBCB34	762 X 1016 mm	4 mm	1600-1800 LUX	36 W / 3.02 A	4 A

LED FEATURES (Duris E3)

Viewing angle at 50 % IV: 120°

Color: 2700 K - 6500 K (warm, neutral and cool white)

CRI: Min. 80

Luminous Flux: Typ. 30 lm @ 5000 K

Luminous efficacy: Typ. 153 lm/W @ 5000 K

Lumen Maintenance: Testing according to IESNA LM-80 in progress

Life Time : 50.000 Hours

Colour: 5700 K -6500 K (White)*

*For special inquired colour is available in 2700 K -6500 K



ASSEMBLY SHEET

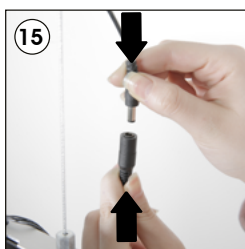
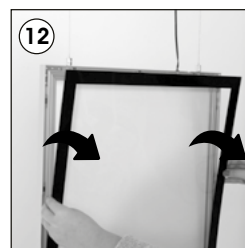
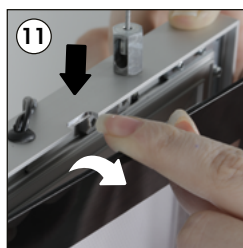
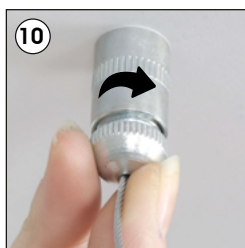
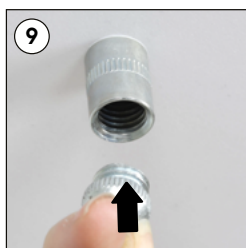
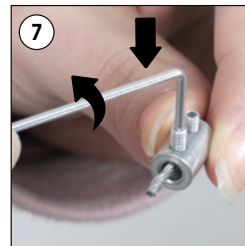
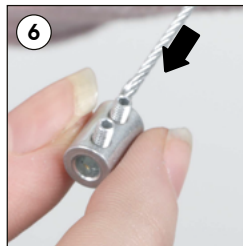
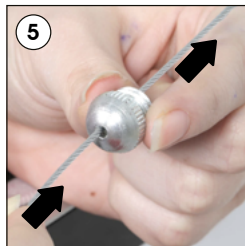
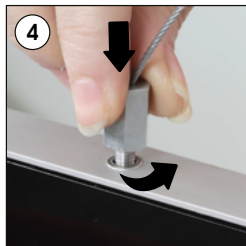
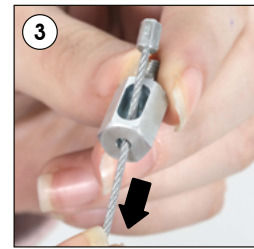
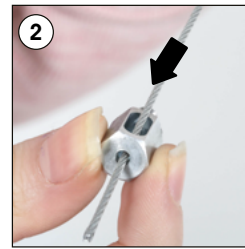
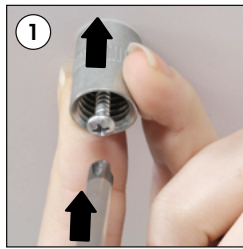


INSTALLATION INSTRUCTIONS

Magneco LEDbox Double Sided / 1010093H000

Each product package includes

- 1 x Eu plug
- 2 x Ceiling hanger set
- 2 x Wire cable Ø1.5, 2000mm
- 2 x Hanger M5
- 2 x Screw
- 2 x Anchor
- 1 x Power supply 12V-2A Fullpower - 2018



Caution !

- 1- Do not step on the light panel nor place the heavy object on the light panel.
- 2- Do not pull the cable with excessive force.
- 3- Use correct capacity and voltage of D.C. power supply. Failure to observe this instruction could result in breakdown.
- 4- Do not touch the light panel or electrical devices with wet hand. Failure to observe this instruction could result in electrical shocks and severe injuries.
- 5- Do not subject this light panel to outdoor, high humid and vaporized area. Failure to observe this instruction could result in breakdown.
- 6- Keep this out of the direct rays of the sun. Failure to observe this instruction could result in color changes of acrylic plate.
- 7- Keep away from fire or severe hot place. Acceptable ambient temperature is max.35°C Failure to observe this instruction could result in shorten the life time and degradation of brightness of LED light source.

• Please inform the order number on the product or on the carton (e.g. 1/110001394-460) to the place that you have made the purchase if any problem with the product occurs.

• All rights reserved. All pictures, figures and writings are secured internationally by copy-right law. Infringements will be sued by civil and legal law.



This technical sheet's contents are all subject to update and modification at MT Displays' exclusive discretion. There is nothing official about this document. For final and legally binding information, please get in touch with the sales staff at MT Displays.



T: +90 850 433 67 85 / info@mtdisplays.com / www.mtdisplays.com