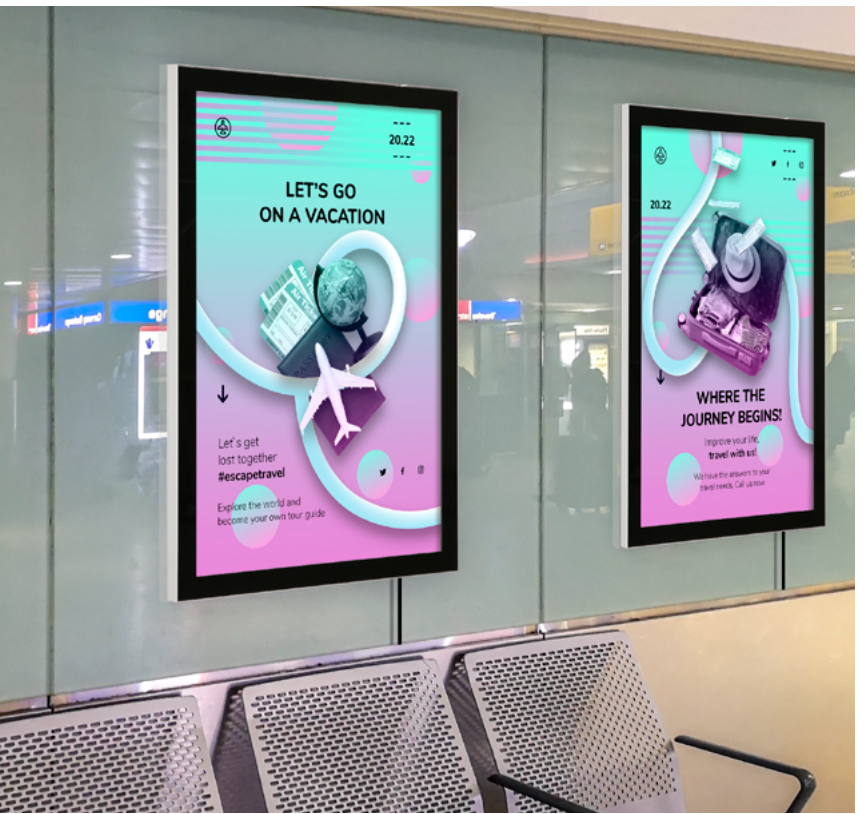


MAGNECO LEDBOX SINGLE SIDED

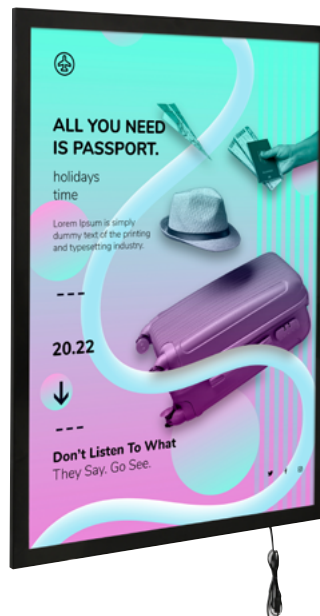


LONG LASTING AND LESS EXPENSIVE THAN CONVENTIONAL

Very Slim, Magneco LEDbox is a new generation in LEDboxes. With a practical magnetic protection cover, it is very easy to change the poster. High and even illumination level attracts consumers to the message. Hidden finger hole to take off the acrylic cover prevents public access to the poster.

KEY SELECTION ATTRIBUTES

- * Single-sided, wall hanging, edge-lit lightbox with a practical magnetic acrylic lens cover and long lasting LED technology bulbs.
- * One of the slimmest lightboxes in the market with 13mm profile depth.
- * Suitable for INDOOR applications with 11" x 17", 20" x 30", 22" x 28", 24" x 36", 30" x 40", A0, A1, A2, A3, A4, B1, B2 poster sizes in optional portrait and landscape position.
- * High illumination is achieved by improved LED technology and laser surface treatment, giving an impressive effect to grab the passers-by.
- * LED bulbs are not seen from outside, since they are embedded in sides of the frame.
- * LED illumination save up to 60% energy costs (compared to fluorescent technology with an increased life expectancy).
- * Supplied with Quality Certificates and CE/UL PAT test reports passed.
- * Black and natural silver-anodized frame with black border in standard and various RAL colors available.
- * One set includes a single sided frame with 13mm depth and embedded LED bulbs; specially treated 2 mm acrylic cover with a magnetic black border; 3 & 4 mm acrylic backing to diffuse light across graphics; clear clips to hold the poster; 2 wall hangers, 4 screws and 4 anchors for installation; 1 power adapter (12V-2A); 3,5 meter long cable and 1 EU Plug. UK and US plugs are available, should be specified with order.
- * Hidden finger hole to take off the acrylic cover prevents public access to the poster.
- * Has no switch button. Optional dimmer is available. Adjusting the light from dark to max lux of LED illuminated frame.
- * Translucent poster material should be used for printing the signage.
- * Long-term cost savings can be achieved with Magneco LED box single sided. They have a lifespan of more than 60,000 hours when utilized for 7-8 hours a day, seven days a week.
- * These illuminated frames are affordable for displaying movie posters, advertisement and translucent posters. For using LED frame 24 hours in 7 days, please ask for special 7/24 power supplies.
- * Packed with an easy mounting instruction sheet & fixing set.
- * Keep out of the direct rays of sun. Keep away from fire or severe hot place. Acceptable ambient temperature is max. 35°C.



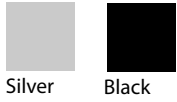
Black



Silver

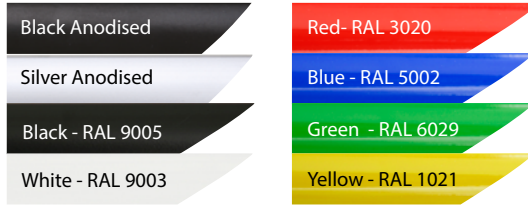


COLOURS IN STOCK



Silver Black

COLOUR OPTIONS



WATCH VIDEO



Watch video at our website
www.mtdisplays.com

SUITABLE FOR

Magneco LED Box can be used for a wide range of INDOOR applications, for signage needs in many locations like retail point-of-purchase, tradeshow displays, movie theatres, sports facilities, shopping malls, markets, groceries, hotels, airports, shops and stores, hospitals, restaurants, halls, meeting, rooms, gas stations, casinos, and more. Single Sided can be used for INDOOR applications, for signage needs in many locations like shopping centers, markets, groceries, hotels, offices airports, shops and stores, hospitals, schools, apartments, restaurants, halls, meeting rooms, gas stations and many more.

FEATURES



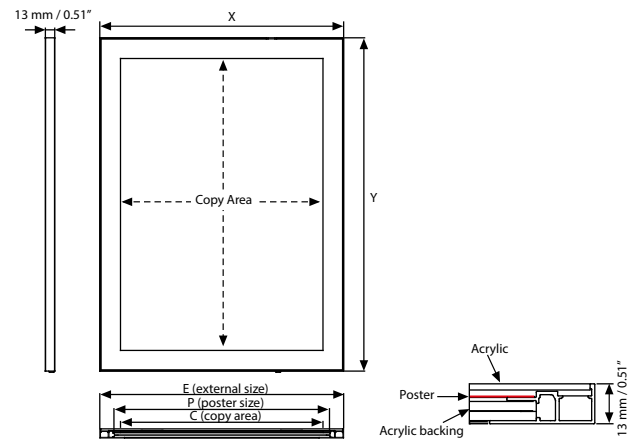
Finger hole to push cover

EXPLODED VIEW



2 wall hangers are standard in each product. Moving hangers let the mounting in portrait and landscape position.

TECHNICAL DRAWING



ARTICLES

SILVER	BLACK	EXTERNAL (x-y)	POSTER SIZE	COPY	LIGHTING	WEIGHT	PACKING SIZE
						WITH PACKING	*W X H X D
ULDMENOB44	ULDMEB0BA4	250 X 337 mm	210 X 297 mm	192 X 279 mm	3000-3600 LUX	1,120 kg	265 X 445 X 35 mm
ULDMENOB43	ULDMEB0BA3	337 X 460 mm	297 X 420 mm	279 X 402 mm	3000-3300 LUX	1,760 kg	355 X 530 X 35 mm
ULDMENOB42	ULDMEB0BA2	460 X 634 mm	420 X 594 mm	402 X 576 mm	2700-3000 LUX	2,870 kg	475 X 705 X 35 mm
ULDMENOB41	ULDMEB0BA1	634 X 881 mm	594 X 841 mm	576 X 823 mm	2300-2600 LUX	5,420 kg	650 X 970 X 35 mm
ULDMENOB40	ULDMEB0BA0	881 X 1229 mm	841 X 1189 mm	823 X 1171 mm	1600-1800 LUX	9,960 kg	895 X 1300 X 35 mm
ULDMENOB82	ULDMEB0BB2	540 X 740 mm	500 X 700 mm	482 X 682 mm	2200-2500 LUX	3,740 kg	555 X 810 X 35 mm
ULDMENOB81	ULDMEB0BB1	740 X 1040 mm	700 X 1000 mm	682 X 982 mm	1800-2100 LUX	7,170 kg	755 X 1110 X 35 mm
ULDMENOB17	ULDMEB0B17	12.60" X 18.58"	11" X 17"	10.31" X 16.30"	2800-3000 LUX	3.769 lbs	13.39" X 21.26" X 1.38"
ULDMENOB22	ULDMEB0B22	23.58" X 29.61"	22" X 28"	21.30" X 27.32"	2000-2200 LUX	8.620 lbs	24.41" X 32.28" X 1.38"
ULDMENOB23	ULDMEB0B23	21.57" X 31.57"	20" X 30"	23.23" X 29.29"	2200-2500 LUX	8.686 lbs	22.24" X 34.25" X 1.38"
ULDMENOB24	ULDMEB0B24	25.59" X 37.60"	24" X 36"	23.31" X 35.31"	1900-2100 LUX	15.873 lbs	26.38" X 40.35" X 1.38"
ULDMENOB34	ULDMEB0B34	31.57" X 41.57"	30" X 40"	29.41" X 39.29"	1800-2100 LUX	17.350 lbs	32.28" X 44.29" X 1.38"

OPTIONAL ACCESSORIES



Optional dimmer to go with LED illuminated frame.. Simply jack the dimmer in frame and then into powersupply. It adjust the light from dark to max lux of LED illuminated frame. / UYUP445550



T: +90 850 433 67 85 / info@mtdisplays.com / www.mtdisplays.com

PHYSICAL DATA

Material

Aluminium profile frame with 13 mm depth and LED bulbs, specially treated acrylic clear lens with a magnetic black painted border, acrylic backing.

Poster Material

Translucent poster material should be used for printing the signage.

Surface Finish

Black and natural silver-anodized frame with black border in standard and various RAL colors available. Call for custom color requests.

Recycled Content

Up to 78% recycled content used.

Warranty

All products are guaranteed for 2 years by MT Displays with below conditions:

[Warranty Conditions](#)

Storage Conditions

Goods should be stored at 0° to 25°C in a dry place. Store in the original package.

Installation Considerations

Magneco LED Box Single Sided is packed with an easy mounting instruction sheet & fixing set. Supplied with Quality Certificates and CE/UL PAT test reports passed. One set includes a single sided frame with 13mm depth and embedded LED bulbs; specially treated 2 mm acrylic cover with a magnetic black border; 3 & 4 mm acrylic backing to diffuse light across graphics; clear clips to hold the poster; 2 wall hangers, 4 screws and 4 anchors for installation; 1 power adapter (12V-2A); 3,5 meter long cable and 1 EU Plug. UK and US plugs are available, should be specified with order. Hidden finger hole to take off the acrylic cover prevents public access to the poster. Has no switch button. Optional dimmer is available. Adjusting the light from dark to max lux of LED illuminated frame. Has a lifespan of more than 60,000 hours when utilized for 7-8 hours a day, seven days a week. For using LED frame 24 hours in 7 days, please ask for special 7/24 power supplies. Keep out of the direct rays of sun. Keep away from fire or severe hot place. Acceptable ambient temperature is max. 35°C.

Design Considerations

Single-sided, wall hanging, edge-lit lightbox with a practical magnetic acrylic lens cover and long lasting LED technology bulbs. One of the slimmest lightboxes in the market with 13mm profile depth. Suitable for INDOOR applications with 11" x 17", 20" x 30", 22" x 28", 24" x 36", 30" x 40", A0, A1, A2, A3, A4, B1, B2 poster sizes in optional portrait and landscape position. High illumination is achieved by improved LED technology and laser surface treatment, giving an impressive effect to grab the passers-by. LED bulbs are not seen from outside, since they are embedded in sides of the frame. LED illumination save up to 60% energy costs (compared to fluorescent technology with an increased life expectancy).

Cleaning and Disinfecting

Clean your displays, with damp microfiber clothes, rinsed with simply water or warm, soapy or gentle shampooed water. Avoid using vinegar, abrasive, acidic, alcohol-based or heavy cleaners or cleaners containing Ammonia. Only after cleaning the product, if needed, simply apply disinfectant or sanitizer that is in compliance with your local guidelines and regulations.

PRINT TEMPLATES

Magneco LEDBox Single Sided - A4

Document Size: 220 x 307 mm (Includes Bleeds)
Finished Size: A4 (210 x 297 mm) [Print](#)

Magneco LEDBox Single Sided - A3

Document Size: 307 x 430 mm (Includes Bleeds)
Finished Size: A3 (297 x 420 mm) [Print](#)

Magneco LEDBox Single Sided - A2

Document Size: 430 x 604 mm (Includes Bleeds)
Finished Size: A2 (420 x 594 mm) [Print](#)

Magneco LEDBox Single Sided - A1

Document Size: 604 x 851 mm (Includes Bleeds)
Finished Size: A1 (594 x 841 mm) [Print](#)

Magneco LEDBox Single Sided - A0

Document Size: 851 x 1199 mm (Includes Bleeds)
Finished Size: A0 (841x 1189 mm) [Print](#)

Magneco LEDBox Single Sided - B2

Document Size: 510 x 710 mm (Includes Bleeds)
Finished Size: B2 (500 x 700 mm) [Print](#)

Magneco LEDBox Single Sided - B1

Document Size: 710 x 1010 mm (Includes Bleeds)
Finished Size: B1 (700 x 1000 mm) [Print](#)

Magneco LEDBox Single Sided - 11"x17"

Document Size: 11.4" x 17.4" (Includes Bleeds)
Finished Size: 11"x17" (279.4x431.8 mm) [Print](#)

Magneco LEDBox Single Sided - 20"x30"

Document Size: 20.4" x 30.4" (Includes Bleeds)
Finished Size: 20"x30" (508x762 mm) [Print](#)

Magneco LEDBox Single Sided - 22"x28"

Document Size: 22.4" x 28.4" (Includes Bleeds)
Finished Size: 22"x28" (558.8x711.1 mm) [Print](#)

Magneco LEDBox Single Sided - 24"x36"

Document Size: 24.4" x 36.4" (Includes Bleeds)
Finished Size: 24"x36" (609.6x914.4 mm) [Print](#)

Magneco LEDBox Single Sided - 30"x40"

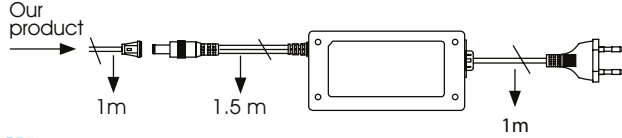
Document Size: 30.4" x 40.4" (Includes Bleeds)
Finished Size: 30"x40" (762x1016 mm) [Print](#)



ILLUMINATED PRODUCTS TECHNICAL MANUAL

POWER SUPPLY

- 12 V DC
- Complete with power supply
- 2 year guaranteed
- 7/16 use
- If 7/24 use required, please order individually.



CABLE

Delivered with 3,5 meter long cable and EU plug.
UK, US or CH plugs should be specified with order.
Extension cable: 1 mm, 2 mm, 3 mm.



TECHNICAL SPECIFICATION

SILVER ARTICLE	BLACK ARTICLE	POSTER	ACRYLIC THICKNESS	ILLUMINATION	POWER CONSUMPTION	POWER SUPPLY RECOMMENDED
ULDMENOB4	ULDMEBOBA4	210 X 297 mm	3 mm	3000-3600 LUX	7 W / 0.58 A	1 A
ULDMENOB3	ULDMEBOBA3	297 X 420 mm	3 mm	3000-3300 LUX	11 W / 0.91 A	1 A
ULDMENOB2	ULDMEBOBA2	420 X 594 mm	3 mm	2700-3000 LUX	14 W / 1.16 A	2 A
ULDMENOB1	ULDMEBOBA1	594 X 841 mm	4 mm	2300-2600 LUX	21 W / 1.75 A	2 A
ULDMENOB0	ULDMEBOBA0	841 X 1189 mm	4 mm	1600-1800 LUX	29 W / 2.4 A	3 A
ULDMENOB2	ULDMEBOBB2	500 X 700 mm	3 mm	2200-2500 LUX	17 W / 1.41 A	2 A
ULDMENOB1	ULDMEBOBB1	700 X 1000 mm	4 mm	1800-2100 LUX	25 W / 2.08 A	3 A
ULDMENOB17	ULDMEBOB17	280 X 432 mm	3 mm	2800-3000 LUX	10 W / 0.84 A	1 A
ULDMENOB22	ULDMEBOB22	559 X 712 mm	3 mm	2000-2200 LUX	17.6 W / 1.5 A	2 A
ULDMENOB23	ULDMEBOB23	508 X 762 mm	3 mm	2200-2500 LUX	17 W / 1.41 A	2 A
ULDMENOB24	ULDMEBOB24	610 X 915 mm	4 mm	1900-2100 LUX	22.5 W / 1.9 A	3 A
ULDMENOB34	ULDMEBOB34	762 X 1016 mm	4 mm	1800-2100 LUX	25 W / 2.08 A	3 A

HANGER



2 wall hangers are standard in each product. Moving hangers let the mounting in portrait and landscape position.

LED FEATURES (Duris E3)

Viewing angle at 50 % IV: 120°

Color: 2700 K - 6500 K (warm, neutral and cool white)

CRI: Min. 80

Luminous Flux: Typ. 30 lm @ 5000 K

Luminous efficacy: Typ. 153 lm/W @ 5000 K

Lumen Maintenance: Testing according to IESNA LM-80 in progress

Life Time : 50.000 Hours

Colour: 5700 K -6500 K (White)*

*For special inquired colour is available in 2700 K -6500 K



ASSEMBLY SHEET

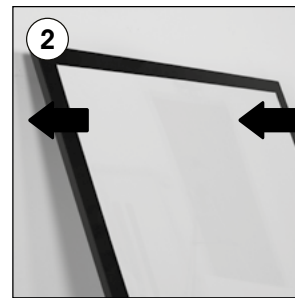
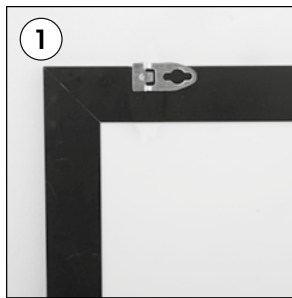


INSTALLATION INSTRUCTIONS

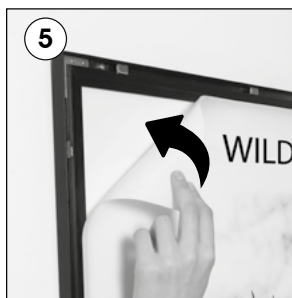
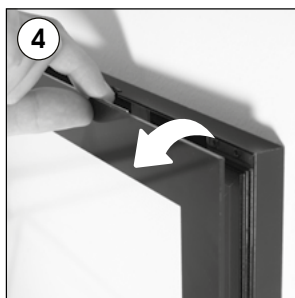
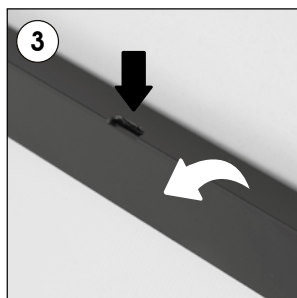
Magneco LEDbox Single Sided / 1009919H000

Each product package includes

- 2 x Hanger
- 4 x Screw
- 4 x Anchor
- 1 x Power Adapter 12V-2A
- 1 x EU Plug



Landscape or portrait positions



Caution !

- 1- Do not step on the light panel nor place the heavy object on the light panel.
- 2- Do not pull the cable with excessive force.
- 3- Use correct capacity and voltage of D.C. power supply.
Failure to observe this instruction could result in breakdown.
- 4- Do not touch the light panel or electrical devices with wet hand.
Failure to observe this instruction could result in electrical shocks and severe injuries.
- 5- Do not subject this light panel to outdoor, high humid and vaporized area.
Failure to observe this instruction could result in breakdown.
- 6- Keep this out of the direct rays of the sun.
Failure to observe this instruction could result in color changes of acrylic plate.
- 7- Keep away from fire or severe hot place. Acceptable ambient temperature is max.35°C Failure to observe this instruction could result in shorten the life time and degradation of brightness of LED light source.

• Please inform the order number on the product or on the carton (e.g. 1/110001394-460) to the place that you have made the purchase if any problem with the product occurs.

• All rights reserved. All pictures, figures and writings are secured internationally by copy-right law. Infringements will be sued by civil and legal law.

This technical sheet's contents are all subject to update and modification at MT Displays' exclusive discretion. There is nothing official about this document. For final and legally binding information, please get in touch with the sales staff at MT Displays.



T: +90 850 433 67 85 / info@mtdisplays.com / www.mtdisplays.com