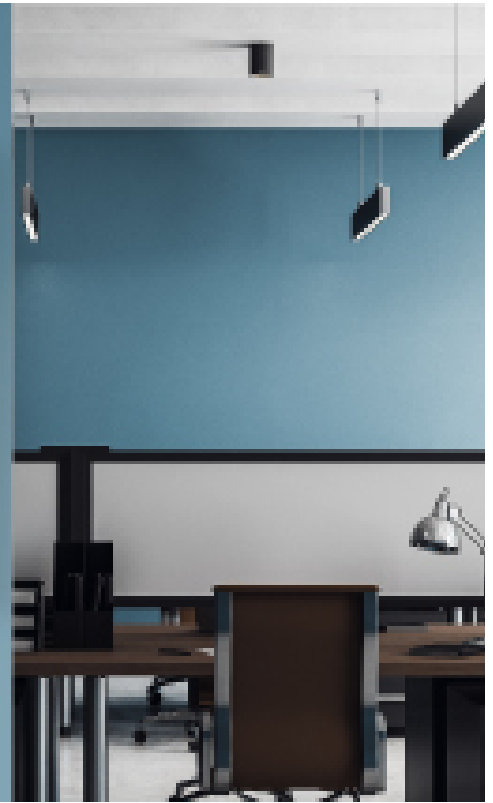
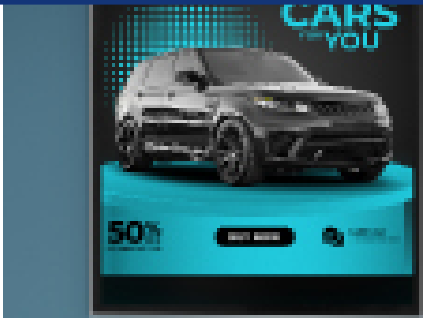


MAGNETIC FRAME



BE UNIQUE WITH A VERY SLIM DESIGN FOR YOUR PROFESSIONAL ADS

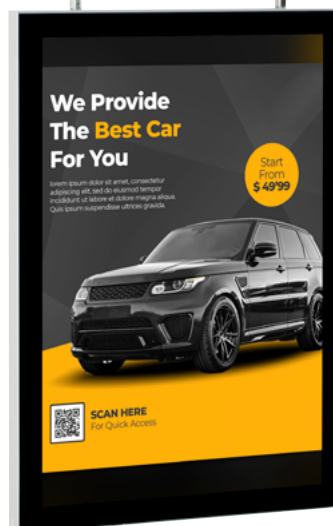
A poster frame with magnetic cover brings new style to frames. It is very slim, elegant and different than most frames available. Single Sided Magnetic Frames can be wall mounted in landscape or portrait positions. Double Sided Magnetic Frames can be easily used landscape or portrait by adjusting suspension cable manually.

KEY SELECTION ATTRIBUTES

- Ideal for various poster sizes (max A0).
- Custom sizes options ranging from a minimum of 237 X 324 mm to a maximum of 868 X 1216 mm mm landscape.
- Natural silver-anodized and various RAL colors available by order, with antimicrobial powder coating.
- Clear PC cover, magnetic and black or silver printed.
- PS backing for Single Sided Magnetic Frame.
- PP middle panel for Double Sided to prevent light transmission.
- Suitable for both landscape and portrait positions.
- Double Sided comes with hanging kit.



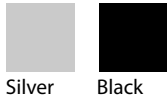
Single Sided, Landscape - Gray



Double Sided Portrait - Black



COLOURS IN STOCK



COLOUR OPTIONS



SUITABLE FOR

Suitable for use in landscape and portrait positions. Magnetic Frame can be used for INDOOR applications, for signage needs in many locations like shopping centers, markets, groceries, hotels, offices airports, shops and stores, hospitals, schools, apartments, banks, restaurants, libraries, museums, telecom companies, travel agencies and many more.

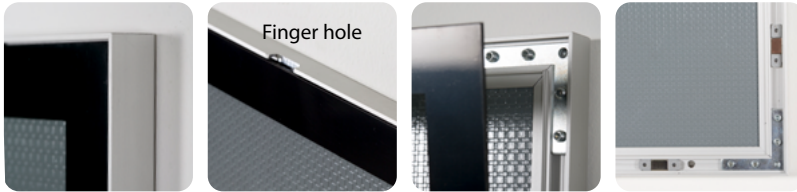
WATCH VIDEO



Watch video at our website
www.mtdisplays.com

FEATURES

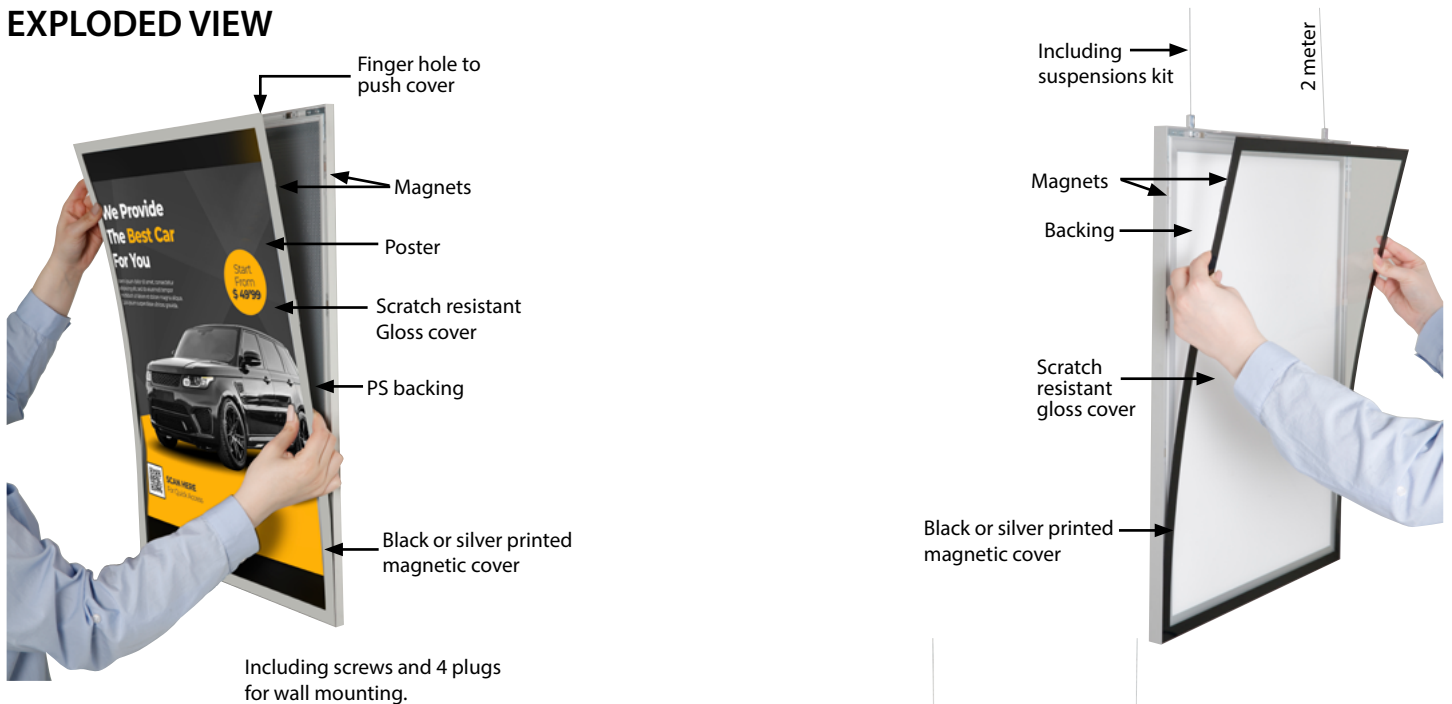
Single sided



Double sided



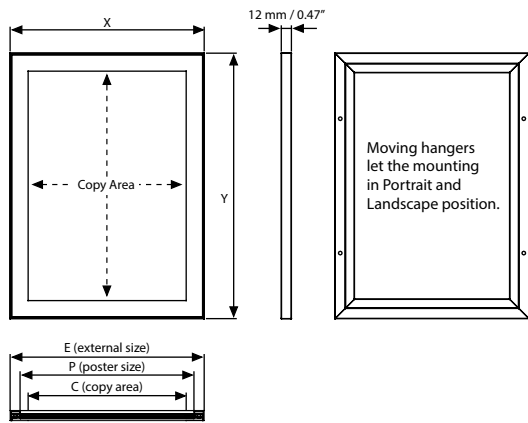
EXPLODED VIEW



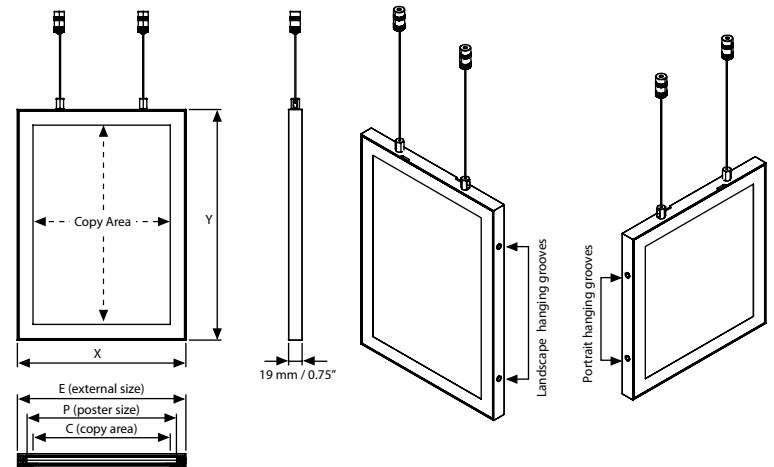
T: +90 850 433 67 85 / info@mtdisplays.com / www.mtdisplays.com

TECHNICAL DRAWING

Single Sided



Double Sided



ARTICLES

SINGLE SIDED						WEIGHT	PACKING SIZE
SILVER	BLACK	EXTERNAL (x-y)	POSTER	COPY	DESCRIPTION	WITH PACKING	*W X H X D
UCMONTBOA4	UCMONTBOA4	237 X 324 mm	210 X 297 mm	193 X 280 mm	Landscape-Portrait	0,575 kg	250 X 340 X 21 mm
UCMONTBOA3	UCMONTBOA3	324 X 447 mm	297 X 420 mm	280 X 403 mm	Landscape-Portrait	1,010 kg	340 X 455 X 21 mm
UCMONTBOA2	UCMONTBOA2	447 X 621 mm	420 X 594 mm	403 X 577 mm	Landscape-Portrait	1,800 kg	460 X 660 X 21 mm
UCMONTBOA1	UCMONTBOA1	621 X 868 mm	594 X 841 mm	577 X 824 mm	Landscape-Portrait	3,400 kg	640 X 890 X 21 mm
UCMONTBOA0	UCMONTBOA0	868 X 1216 mm	841 X 1189 mm	824 X 1172 mm	Landscape-Portrait	6,300 kg	880 X 1230 X 21 mm
UCMONTBOB2	UCMONTBOB2	527 X 727 mm	500 X 700 mm	483 X 683 mm	Landscape-Portrait	2,800 kg	540 X 740 X 21 mm
UCMONTBOB1	UCMONTBOB1	727 X 1027 mm	700 X 1000 mm	683 X 983 mm	Landscape-Portrait	5,500 kg	745 X 1040 X 21 mm
UCMONTBOB81	UCMONTBOB81	9.56" X 12.06"	8.5" X 11"	7.83" X 10.33"	Landscape-Portrait	1.543 lbs	10.67" X 14.17" X 1.22"
UCMONTBO17	UCMONTBO17	12.06" X 18.06"	11" X 17"	10.33" X 16.33"	Landscape-Portrait	2.645 lbs	13.19" X 19.37" X 1.22"
UCMONTBO18	UCMONTBO18	19.06" X 25.06"	18" X 24"	17.33" X 23.33"	Landscape-Portrait	4.629 lbs	20.20" X 27.17" X 1.22"
UCMONTBO22	UCMONTBO22	23.06" X 29.06"	22" X 28"	21.33" X 27.33"	Landscape-Portrait	6.393 lbs	24.17" X 31.18" X 1.22"
UCMONTBO23	UCMONTBO23	21.06" X 31.06"	20" X 30"	19.33" X 29.33"	Landscape-Portrait	6.172 lbs	22.17" X 33.15" X 1.22"
UCMONTBO24	UCMONTBO24	25.06" X 37.06"	24" X 36"	23.33" X 35.33"	Landscape-Portrait	9.259 lbs	26.18" X 39.17" X 1.22"
UCMONTBO34	UCMONTBO34	31.06" X 41.06"	30" X 40"	29.33" X 39.33"	Landscape-Portrait	15.211 lbs	38.19" X 43.15" X 1.22"

Double Sided						WEIGHT	PACKING SIZE
SILVER	BLACK	EXTERNAL (x-y)	POSTER	COPY	DESCRIPTION	WITH PACKING	*W X H X D
UCMONCBOA4	UCMONCBOA4	237 X 324 mm	210 X 297 mm	193 X 280 mm	Landscape-Portrait	0,750 kg	260 X 380 X 30 mm
UCMONCBOA3	UCMONCBOA3	324 X 447 mm	297 X 420 mm	280 X 403 mm	Landscape-Portrait	1,300 kg	350 X 500 X 30 mm
UCMONCBOA2	UCMONCBOA2	447 X 621 mm	420 X 594 mm	403 X 577 mm	Landscape-Portrait	2,100 kg	475 X 680 X 30 mm
UCMONCBOA1	UCMONCBOA1	621 X 868 mm	594 X 841 mm	577 X 824 mm	Landscape-Portrait	3,800 kg	645 X 920 X 30 mm
UCMONCBOA0	UCMONCBOA0	868 X 1216 mm	841 X 1189 mm	824 X 1172 mm	Landscape-Portrait	6,800 kg	900 X 1270 X 30 mm
UCMONCBOB2	UCMONCBOB2	527 X 727 mm	500 X 700 mm	483 X 683 mm	Landscape-Portrait	3,100 kg	550 X 780 X 30 mm
UCMONCBOB1	UCMONCBOB1	727 X 1027 mm	700 X 1000 mm	683 X 983 mm	Landscape-Portrait	5,900 kg	750 X 1090 X 30 mm
UCMONCBOB81	UCMONCBOB81	9.56" X 12.06"	8.5" X 11"	7.83" X 10.33"	Landscape-Portrait	1.984 lbs	10.08" X 13.58" X 0.83"
UCMONCBO17	UCMONCBO17	12.06" X 18.06"	11" X 17"	10.33" X 16.33"	Landscape-Portrait	3.306 lbs	12.60" X 19.57" X 0.83"
UCMONCBO18	UCMONCBO18	19.06" X 25.06"	18" X 24"	17.33" X 23.33"	Landscape-Portrait	6.172 lbs	19.61" X 26.57" X 0.83"
UCMONCBO22	UCMONCBO22	23.06" X 29.06"	22" X 28"	21.33" X 27.33"	Landscape-Portrait	8.598 lbs	23.58" X 30.59" X 0.83"
UCMONCBO23	UCMONCBO23	21.06" X 31.06"	20" X 30"	19.33" X 29.33"	Landscape-Portrait	8.377 lbs	21.57" X 32.56" X 0.83"
UCMONCBO24	UCMONCBO24	25.06" X 37.06"	24" X 36"	23.33" X 35.33"	Landscape-Portrait	12.125 lbs	25.59" X 38.58" X 0.83"
UCMONCBO34	UCMONCBO34	31.06" X 41.06"	30" X 40"	29.33" X 39.33"	Landscape-Portrait	20.502 lbs	37.60" X 42.56" X 0.83"

PHYSICAL DATA

Material

Aluminum profiles. Magnetic PC poster covers, PS backing for single sided and PP middle panel for double sided.

Poster Material & Thickness

Max poster thickness is 1,5 mm. Any non-standard poster thicknesses should be indicated with order.

Surface Finish

Profiles silver anodized, or black colour, antimicrobial powder coating. Magnetic cover colour options. Custom colors also available, call for custom color requests.

Recycled Content

Up to 60% recycled content used.

Warranty

All products are guaranteed for 3 years by MT Displays with below conditions:
[Warranty Conditions](#)

Installation Considerations

Can be used landscape or portrait. Complete with wall fixing components. No assembly required. Adjusting suspension cable manually for double sided. Hidden finger hole on the short profile for easy opening of magnetic cover.

Storage Conditions

Goods should be stored at 0° to 25°C in a dry place. Store in the original package.

Cleaning and Disinfecting

Clean your displays, with damp microfiber clothes, rinsed with simply water or warm, soapy or gentle shampooed water. Avoid using vinegar, abrasive, acidic, alcohol-based or heavy cleaners or cleaners containing Ammonia. Only after cleaning the product, if needed, simply apply disinfectant or sanitizer that is in compliance with your local guidelines and regulations.

Certification / Patents

[Aluminum declaration](#)



PRINT TEMPLATES

Magnetic Frame - A4

Document Size: 220 x 307 mm (Includes Bleeds)
 Finished Size: A4 (210 x 297 mm) [Print](#)

Magnetic Frame - A3

Document Size: 307 x 430 mm (Includes Bleeds)
 Finished Size: A3 (297 x 420 mm) [Print](#)

Magnetic Frame - A2

Document Size: 430 x 604 mm (Includes Bleeds)
 Finished Size: A2 (420 x 594 mm) [Print](#)

Magnetic Frame - A1

Document Size: 604 x 851 mm (Includes Bleeds)
 Finished Size: A1 (594 x 841 mm) [Print](#)

Magnetic Frame - A0

Document Size: 851 x 1199 mm (Includes Bleeds)
 Finished Size: A0 (841 x 1189 mm) [Print](#)

Magnetic Frame - B2

Document Size: 510 x 710 mm (Includes Bleeds)
 Finished Size: B2 (500 x 700 mm) [Print](#)

Magnetic Frame - B1

Document Size: 710 x 1010 mm (Includes Bleeds)
 Finished Size: B1 (700 x 1000 mm) [Print](#)

Magnetic Frame - 8.5"x11"

Document Size: 8.89" x 11.39" (Includes Bleeds)
 Finished Size: 8.5"x11" (215.9x279.4 mm)

Magnetic Frame - 11"x17"

Document Size: 11.4" x 17.4" (Includes Bleeds)
 Finished Size: 11"x17" (457.2x609.6 mm)

Magnetic Frame - 18"x24"

Document Size: 18.4" x 24.4" (Includes Bleeds)
 Finished Size: 18"x24" (457.2x609.6 mm)

Magnetic Frame - 20"x30"

Document Size: 20.4" x 30.4" (Includes Bleeds)
 Finished Size: 20"x30" (508x762 mm) [Print](#)

Magnetic Frame - 22"x28"

Document Size: 22.4" x 28.4" (Includes Bleeds)
 Finished Size: 22"x28" (558.8x711.1 mm)

Magnetic Frame - 24"x36"

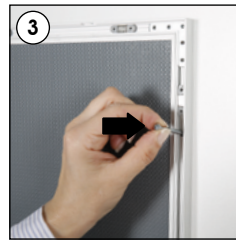
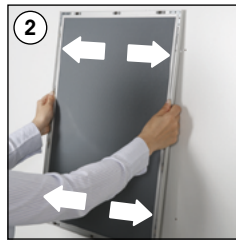
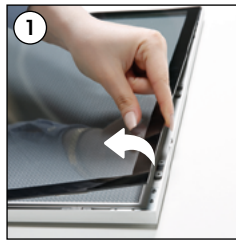
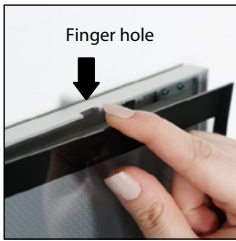
Document Size: 24.4" x 36.4" (Includes Bleeds)
 Finished Size: 24"x36" (609.6x914.4 mm)

Magnetic Frame - 30"x40"

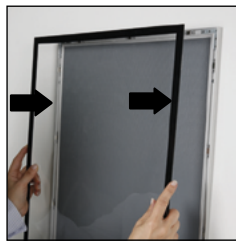
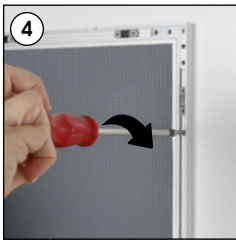
Document Size: 30.4" x 40.4" (Includes Bleeds)
 Finished Size: 30"x40" (762x1016 mm) [Print](#)

INSTALLATION INSTRUCTIONS

Magnetic Frame Single Sided / 1010191H000



Screw & anchor mounting



Magnets

Each frame includes wall mounting accessories (4 screws & 4 anchors)



Portrait



Landscape

- Please inform the order number on the product or on the carton (e.g. 1/110001394-460) to the place that you have made the purchase if any problem with the product occurs.
- All rights reserved. All pictures, figures and writings are secured internationally by copy-right law. Infringements will be sued by civil and legal law.

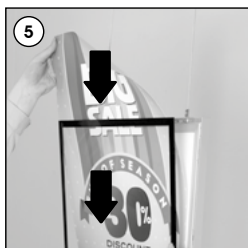
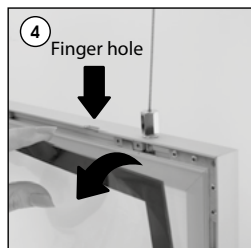
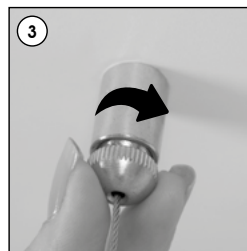
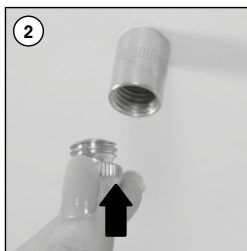
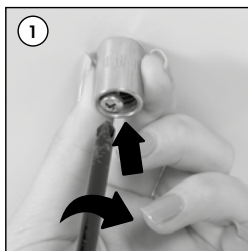


INSTALLATION INSTRUCTIONS

Magnetic Frame Double Sided / 1010191H000

Each product package includes

- 2 x Ceiling hanger set
- 2 x Wire cable Ø1.5, 2000mm
- 2 x Hanger M5
- 2 x Screw
- 2 x Anchor



Landscape



Portrait

- Please inform the order number on the product or on the carton (e.g. 1/110001394-460) to the place that you have made the purchase if any problem with the product occurs.
- All rights reserved. All pictures, figures and writings are secured internationally by copy-right law. Infringements will be sued by civil and legal law.

This technical sheet's contents are all subject to update and modification at MT Displays' exclusive discretion. There is nothing official about this document. For final and legally binding information, please get in touch with the sales staff at MT Displays.



T: +90 850 433 67 85 / info@mtdisplays.com / www.mtdisplays.com