

## MASTER SIGN FLEX BOARD



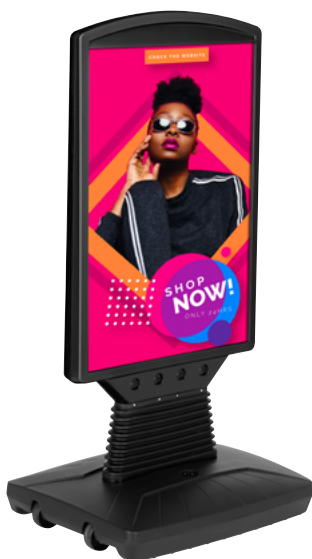
### PATENT PROTECTED DURABLE PLASTIC SIDEWALK SIGNS WITH FLEX DESIGN

Our genuine patented (PATENT WIPO083329) sidewalk sign holder Master Sign Flex board provides maximum exposure for your signage. It is double Sided. You can display two, self-adhesive posters at the same time. Equipped with caster wheels for easy transport. It has a free space for your logo application at the top. The top side can be used as a handle while transporting. The base and the body are made of weather-resistant HDPE (high-density polyethylene), which makes this sidewalk sign holder ideal for outdoor use.

#### KEY SELECTION ATTRIBUTES

- \* Durable plastic Pavement Sign with flex board and waterbase for resilience and outdoor use.
- \* Patent protected design that takes the attention on the sidewalk and stops passers-by.
- \* Suitable for 420x600mm poster size, self-adhesive posters to stick-on or vinyl sheeting, fluted PP, metal, Plastech PVC foam board to apply with well nut.
- \* Weather-resistant: Suitable for rainy conditions with HDPE (high-density polyethylene) body and base.
- \* One set includes a double sided flex board body with swinging spring, a waterbase with push-up wheels, and 2 nuts for installation.
- \* Optional well nuts, cable lock kit and chalkboard markers are available. These accessories should be ordered separately.

- \* The wheels ensure the movement of the unit.
- \* Free space for logo application at the top with 200 x 30 (h) mm print size.
- \* Finger handle at top for carrying the product easily.
- \* Natural silver, black, beige, brown in standard and various RAL colors available. Other colors are available upon request.
- \* Packed unassembled with an easy mounting instruction sheet & fixing set. No tools assembly. 2 packs.



**Black-Black**  
Self adhesive poster



**Brown-Beige**  
Self adhesive poster



**Silver-Black**  
Self adhesive dry wipe foil



**Silver-Silver**  
Self adhesive poster

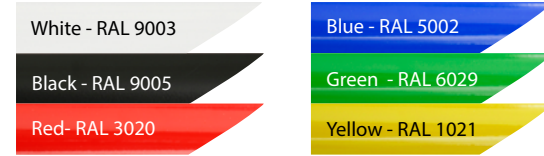


## COLOURS IN STOCK



Black Grey Beige Brown

## COLOUR OPTIONS



White - RAL 9003

Black - RAL 9005

Red - RAL 3020

Blue - RAL 5002

Green - RAL 6029

Yellow - RAL 1021

## SUITABLE FOR

Master Sign Fix Boards can be used for INDOOR and OUTDOOR applications, for signage needs in many locations like shopping centers, markets, groceries, hotels, offices airports, shops and stores, hospitals, schools and many more.

## WATCH VIDEO

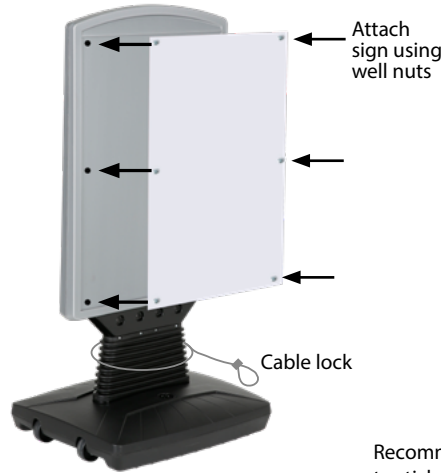
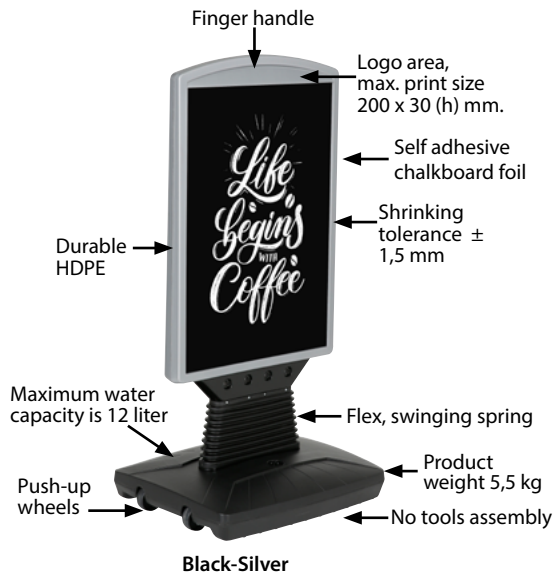


Watch video at our website  
www.mtdisplays.com

## FEATURES



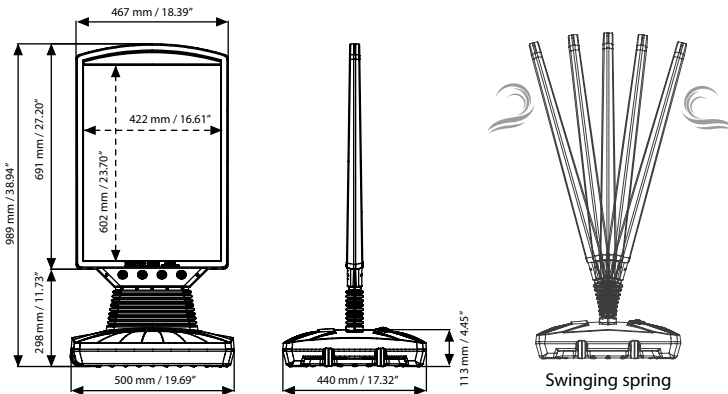
## EXPLODED VIEW



Easy to carry.

Recommended graphic materials: self-adhesive poster to stick-on or vinyl sheeting, fluted PP, metal, Plastech PVC foam board to apply with well nut.

## TECHNICAL DRAWING



## ARTICLES

ARTICLE	POSTER SIZE	DESCRIPTION	WEIGHT	PACKING SIZE
			WITH PACKING	*W X H X D
UPFS1100A2	420 X 600 mm	Black - Silver	6,250 kg	495 X 955 X 60 / 430 X 530 X 110 mm
UPFS1200A2	420 X 600 mm	Brown - Beige	6,250 kg	495 X 955 X 60 / 430 X 530 X 110 mm
UPFS1300A2	420 X 600 mm	Black-Black	6,250 kg	495 X 955 X 60 / 430 X 530 X 110 mm

## OPTIONAL ACCESSORIES



Optional well nuts  
(12 Pcs)  
UYSP00010X1000



Cable lock kit for  
WindPro 2100mm.  
TZZZ998701



Colour chalkboard  
marker. 10 mm wide.  
5 Pcs. / UYAKLM1251



White chalkboard marker  
for Wood Display. 10 mm  
wide. 3 Pcs / UYAKLM1250



T: +90 850 433 67 85 / info@mtdisplays.com / www.mtdisplays.com

# PHYSICAL DATA

## Material

Durable plastic - HDPE (high-density polyethylene) flex board body and waterbase with ±1,5mm shrinking tolerance.

## Surface Finish

Natural silver, black, beige and brown in standard and various RAL colors available. Other colors are available upon request.

## Recycled Content

Up to 40% recycled content used.

## Warranty

All products are guaranteed for 3 years by MT Displays with below conditions:

[Warranty Conditions](#)

# PRINT TEMPLATES

## Master Sign Flex Board - 420 x 600 mm

Document Size: 430 x 610 mm (Includes Bleeds)

Finished Size: 420 x 600 mm [Print](#)

## Installation Considerations

Packed unassembled with an easy mounting instruction sheet & fixing set. Assembly in 10 seconds. No tools assembly. 2 packs. One set includes a double sided fixed board body with swinging spring design, a waterbase with push-up wheels, 2 nuts for installation. Optional well nuts, cable lock kit and chalkboard markers are available. These accessories should be ordered separately.

## Storage Conditions

Goods should be stored at 0° to 25°C in a dry place. Store in the original package.

## Design Considerations

Durable plastic Pavement Sign with flex board and waterbase for flexibility and outdoor use. Patent protected design that takes the attention on the sidewalk and stops passers-by. Suitable for 420x600mm poster size, self-adhesive posters to stick-on or vinyl sheeting, fluted PP, metal, Plastech PVC foam board to apply with well nut.

Weather-resistant: Suitable for rainy conditions with HDPE (high-density polyethylene) body and base. The push-up wheels ensure the movement of the unit. Suitable for silk screen printing, free space for logo application at the top with 200 x 30 (h) mm print size. Finger handle at top for carrying the product easily.

## Cleaning and Disinfecting

Clean your displays, with damp microfiber clothes, rinsed with simply water or warm, soapy or gentle shampooed water. Avoid using vinegar, abrasive, acidic, alcohol-based or heavy cleaners or cleaners containing Ammonia. Only after cleaning the product, if needed, simply apply disinfectant or sanitizer that is in compliance with your local guidelines and regulations.

## Patent

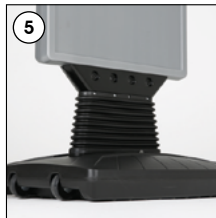
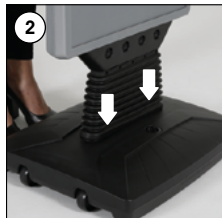
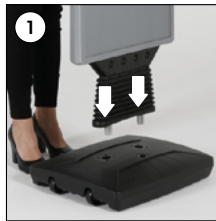
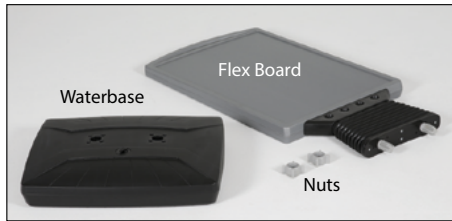
WIPO083329

# INSTALLATION INSTRUCTIONS

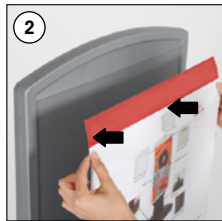
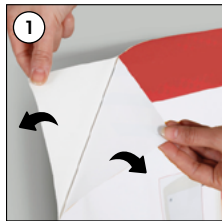
## Master Sign Flex Board / 1012099H000

### Each product includes

- 1 x Waterbase
- 1 x Flex Board
- 2 x Nut



### Sticker application



• Please inform the order number on the product or on the carton (e.g. 1/110001394-460) to the place that you have made the purchase if any problem with the product occurs.

• All rights reserved. All pictures, figures and writings are secured internationally by copy-right law. Infringements will be sued by civil and legal law.



This technical sheet's contents are all subject to update and modification at MT Displays' exclusive discretion. There is nothing official about this document. For final and legally binding information, please get in touch with the sales staff at MT Displays.



T: +90 850 433 67 85 / [info@mtdisplays.com](mailto:info@mtdisplays.com) / [www.mtdisplays.com](http://www.mtdisplays.com)