

## MAXI FRAME WITH LED

MAXI  
frame



## FRAMELESS LOOKING FABRIC AD SIGNS WITH HOMOGENOUS ILLUMINATION

Used with wall mounting fixture on the back. The unit is single sided & edge-lit. Pre-treated light guided panel diffuses light even & powerful. Offers evenly diffused lux in all sizes.

### KEY SELECTION ATTRIBUTES

- \* A very new and fresh looking, single-sided, wall hanging, edge-lit Maxi Frame system, combining long lasting LED technology bulbs, aluminium Dame Profile and sewed or nylon strip for application of printed fabric posters.
- \* One of the most attractive frame designs in the market with frameless look when viewed from the front side.
- \* Powerful illumination is achieved by specially treated acrylic and provides homogenous illumination. Offers evenly diffused lux in all sizes. Depending on the size, 1400 to 3900 lux of luminance is achieved.
- \* LED bulbs are not seen from outside, since they are embedded in sides of the frame.
- \* Suitable for INDOOR applications with A0, A1, A2, A3, A4, B0, B1, B2, 20"x30", 30"x40" and 40"x60" poster sizes in portrait and landscape position.
- \* Maxi Frames with LED can be ordered in standard sizes. They can also be ordered in special lengths and parts as semi products.
- \* Supplied with quality certificates and CE/UL PAT test reports passed. Complies with EN55015 & EN61547.
- \* Natural silver-anodized in standard and various RAL colors available with antimicrobial powder coating. Subject to MOQ.
- \* One set includes a single sided 32mm Dame Profile frame with 4mm profile thickness and 34mm depth; and embedded LED bulbs; 36x19mm aluminium H-profile for 1000mm and more wider poster sizes; specially treated acrylic backing to diffuse light evenly across graphics; 3mm clear nylon strips; connectors and cleats; 2 wall hangers; on/off switch on profile; 1 power supply with 3,5 meter long cable and 1 EU Plug. UK, US and Australian plugs are available, should be specified with order. All electrical components are CE listed.
- \* Optional dimmer is available. Adjusting the light from dark to max lux of LED illuminated frame.
- \* Used with 2 wall mounting fixtures on the back. Moving hangers let the mounting in portrait and landscape position.
- \* Fabric is not included in the original pack.
- \* Recommended fabric thickness for digital printing is 0,5mm. Thickness of the profile is 4mm. Thickness of nylon strip is 3mm. The pull sticker in 0,5mm thickness must be sewed on the fabric for taking out the poster when fitted into the channels.
- \* 13mm on each side of the fabric into Maxi Profiles, so 26mm on each Fabric Poster is not seen on the poster. Please arrange accordingly.
- \* Additional print shares suggested for Maxi Frame's Fabric Posters: 28mm between 200-750mm, 20mm between 750-1500mm, 15mm between 1500-3000mm. These values might vary according to the fabric used.
- \* Profiles and connector parts for the required sizes are packed unassembled in a single box with an easy mounting instruction sheet. Fixing tools are included in each frame.
- \* Products are suitable to use 7/16. For using the LED frame for 24 hours a day and 7 days a week, please ask for special 7/24 power supplies.



## COLOURS IN STOCK



Silver

## SUITABLE FOR

Maxi Frame with LED can be used for INDOOR applications, for signage needs in many locations like shopping centers, markets, groceries, hotels, offices airports, shops and stores, hospitals, schools, apartments, banks, car dealers, restaurants, telecom companies, insurance companies, libraries, museums, travel agencies and many more.

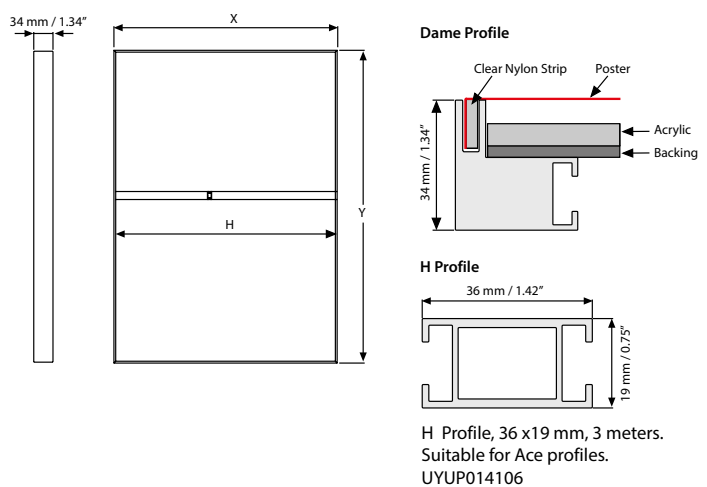
## FEATURES



## EXPLODED VIEW



## TECHNICAL DRAWING



### Application of nylon strip by sew-on process



### Application of nylon strip by double sided tape

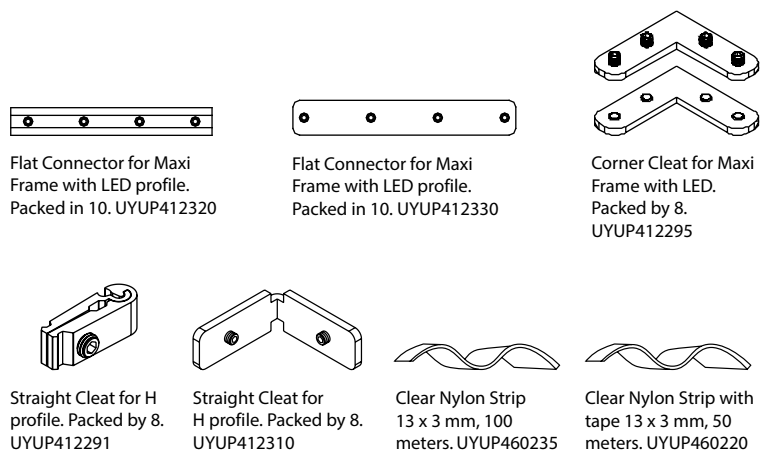


2 wall hangers are standard in each product. Moving hangers let the mounting in portrait and landscape position.

## ARTICLES

ARTICLE	EXTERNAL (x-y)	H (mm)	H (Pcs)	LIGHTING	WEIGHT	PACKING SIZE
					WITH PACKING	*W X H X D
UMLD3400A4	210 X 297 mm	-	-	2200-2400 LUX	1,450 kg	230 X 330 X 43 mm
UMLD3400A3	297 X 420 mm	-	-	2200-2400 LUX	2,250 kg	320 X 450 X 43 mm
UMLD3400A2	420 X 594 mm	-	-	2200-2400 LUX	3,800 kg	440 X 630 X 43 mm
UMLD3400A1	594 X 841 mm	-	-	2200-2400 LUX	7,350 kg	620 X 870 X 43 mm
UMLD3400A0	841 X 1189 mm	-	-	2000-2200 LUX	15,100 kg	870 X 1210 X 43 mm
UMLD3400B2	500 X 700 mm	-	-	2200-2400 LUX	5,010 kg	520 X 730 X 430 mm
UMLD3400B1	700 X 1000 mm	-	-	2000-2200 LUX	9,950 kg	720 X 1030 X 43 mm
UMLD3400B0	1000 X 1400 mm	936 mm	1	-	20,000 kg	1020 X 1430 X 43 mm
UMLD3400I8	18" X 24"	-	-	2200-2500 LUX	11,243 lbs	18.90" X 25.59" X 1.69"
UMLD3400I2	22" X 28"	-	-	2300-2700 LUX	14,991 lbs	22.83" X 29.53" X 1.69"
UMLD3400I3	20" X 30"	-	-	2600-2800 LUX	14,991 lbs	20.87" X 31.50" X 1.69"
UMLD3400I4	24" X 36"	-	-	2600-2800 LUX	19,400 lbs	34.80" X 37.80" X 1.69"
UMLD3400I34	30" X 40"	-	-	1900-2100 LUX	23,809 lbs	31.10" X 41.34" X 1.69"
UMLD3400I36	36" X 48"	-	-	2000-2200 LUX	33,951 lbs	36.81" X 49.61" X 1.69"
UMLD3400I46	40" X 60"	37.48"	1	1900-2300 LUX	45,194 lbs	40.94" X 61.42" X 1.69"

## COMPONENTS OF MAXI FRAMES



T: +90 850 433 67 85 / info@mtdisplays.com / www.mtdisplays.com

## PHYSICAL DATA

### Material

32mm aluminium profile frame with 34 mm depth, 36x19mm aluminium H-profile, clear nylon strips, metal connectors, acrylic backing, LED bulbs.

### Surface Finish

Natural silver-anodized in standard and various RAL colors available with antimicrobial powder coating. Subject to MOQ. Call for custom color requests.

### Storage Conditions

Goods should be stored at 0° to 25°C in a dry place. Store in the original package.

### Recycled Content

Up to 78% recycled content used.

### Warranty

All products are guaranteed for 3 years by MT Displays with below conditions:

[Warranty Conditions](#)

### Installation Considerations

Profiles and connector parts of Maxi Frame with LED for the required sizes are packed unassembled in a single box with an easy mounting instruction sheet. Fixing tools are included in each frame. Supplied with quality certificates and CE/UL PAT test reports passed. Complies with EN55015 & EN61547. One set includes a single sided 32mm Dame Profile frame with 4mm profile thickness and 34mm depth; and embedded LED bulbs; 36x19mm aluminium H-profile for 1000mm and

more wider frame sizes; specially treated acrylic backing to diffuse light evenly across graphics; 3mm clear nylon strips; connectors and cleats; 2 wall hangers; on/off switch on profile; 1 power supply with 3,5 meter long cable and 1 EU Plug. UK, US and Australian plugs are available, should be specified with order. All electrical components are CE listed. Optional dimmer is available, adjusting the light from dark to max lux of LED illuminated frame. Products are suitable to use 7/16. For using the LED frame for 24 hours a day and 7 days a week, please ask for special 7/24 power supplies. Used with 2 wall mounting fixtures on the back. Moving hangers let the mounting in portrait and landscape position. Fabric is not included in the original pack. 13mm on each side of the fabric into Maxi Profiles, so 26mm on each Fabric Poster is not seen on the poster. Please arrange accordingly. Additional print shares suggested for Maxi Frame's Fabric Posters: 28mm between 200-750mm, 20mm between 750-1500mm, 15mm between 1500-3000mm. These values might vary according to the fabric used. Maxi Frames with LED can be ordered in standard sizes. They can also be ordered in special lengths and parts as semi products.

### Poster Material & Thickness

Recommended fabric thickness for digital printing is 0,5mm. Thickness of the channel is 4mm. Thickness of nylon strip is 3mm. The pull sticker in 0,5mm thickness must be sewed on the fabric to take out the poster from channels.

### Design Considerations

A very new and fresh looking, single-sided, wall hanging, edge-lit Maxi Frame system, combining long lasting LED technology bulbs, aluminium Dame Profile and sewed or nylon strip for application of printed fabric posters. One of the most attractive frame designs in the market with frameless look when viewed from the front side. Powerful illumination is achieved by specially treated acrylic and provides homogenous illumination. Offers evenly diffused lux in all sizes. Depending on the size, 1400 to 3900 lux of luminance is achieved. LED bulbs are not seen from outside, since they are embedded in sides of the frame. Suitable for INDOOR applications with A0, A1, A2, A3, A4, B0, B1, B2, 20"x30", 30"x40" and 40"x60" poster sizes in portrait and landscape position.

### Cleaning and Disinfecting

Clean your displays, with damp microfiber clothes, rinsed with simply water or warm, soapy or gentle shampooed water. Avoid using vinegar, abrasive, acidic, alcohol-based or heavy cleaners or cleaners containing Ammonia. Only after cleaning the product, if needed, simply apply disinfectant or sanitizer that is in compliance with your local guidelines and regulations.

## PRINT TEMPLATES

### Maxi Frame with LED - A4

Document Size: 270x357 mm (Includes Bleeds)

Finished Size: A4 (210 x 297 mm) [Print](#)

### Maxi Frame with LED - A3

Document Size: 357 x 480 mm (Includes Bleeds)

Finished Size: A3 (297 x 420 mm) [Print](#)

### Maxi Frame with LED - A2

Document Size: 480 x 654 mm (Includes Bleeds)

Finished Size: A2 (420 x 594 mm) [Print](#)

### Maxi Frame with LED - A1

Document Size: 654 x 901 mm (Includes Bleeds)

Finished Size: A1 (594 x 841 mm) [Print](#)

### Maxi Frame with LED - A0

Document Size: 901 x 1249 mm (Includes Bleeds)

Finished Size: A0 (841 x 1189 mm) [Print](#)

### Maxi Frame with LED - B2

Document Size: 560 x 760 mm (Includes Bleeds)

Finished Size: B2 (500 x 700 mm) [Print](#)

### Maxi Frame with LED - B1

Document Size: 760 x 1060 mm (Includes Bleeds)

Finished Size: B1 (700 x 1000 mm) [Print](#)

### Maxi Frame with LED - B0

Document Size: 1060 x 1460 mm (Includes Bleeds)

Finished Size: B0 (1000 x 1400 mm) [Print](#)

### Maxi Frame with LED - 18"x24"

Document Size: 20.36" x 26.36" (Includes Bleeds)

Finished Size: 18"x24" (457.2x609.6 mm)

### Maxi Frame with LED - 22"x28"

Document Size: 24.36" x 30.36" (Includes Bleeds)

Finished Size: 22"x28" (558.8x711.2 mm)

### Maxi Frame with LED - 20"x30"

Document Size: 22.36" x 32.36" (Includes Bleeds)

Finished Size: 20"x30" (508x762 mm) [Print](#)

### Maxi Frame with LED - 24"x36"

Document Size: 26.36" x 38.36" (Includes Bleeds)

Finished Size: 24"x36" (609.6x914.4 mm)

### Maxi Frame with LED - 30"x40"

Document Size: 32.36" x 42.36" (Includes Bleeds)

Finished Size: 30"x40" (762x1016 mm) [Print](#)

### Maxi Frame with LED - 36"x48"

Document Size: 38.36" x 50.36" (Includes Bleeds)

Finished Size: 36"x48" (914.4x1219 mm)

### Maxi Frame with LED - 40"x60"

Document Size: 42.36" x 62.36" (Includes Bleeds)

Finished Size: 40"x60" (1016x1524 mm) [Print](#)

34mm/ Maxi Frame	Size Available	Power Consumption	Power Supply Recommended	Luminance
Single Sided	Poster Size	Single	12 Vdc, Ampere	LUX
UMLD3400A4	A4 / 297x210	5W/0,4A	1A	1900-2300
UMLD3400A3	A3 / 420x297	15,5W/1,3A	2A	3300-3900
UMLD3400A2	A2 / 594x420	25W/2,05A	3A	2700-3300
UMLD3400A1	A1 / 841x594	33W/2,75A	4A	2200-2400
UMLD3400A0	A0 / 1189x841	47,5W/3,95A	6A	1600-1800
UMLD3400B2	B2 / 700x500	28W/2,4A	3A	2400-2700
UMLD3400B1	B1 / 1000x700	31W/2,6A	4A	1700-1900
UMLD3400B0	B0 / 1400x1000	58W/4,85A	6A	1400-1800
UMLD340023	20"x30" / 508x762	31W/2,6A	4A	2600-3000
UMLD340034	30"x40" / 762x1016	39,5W/3,3A	4A	1700-2000
UMLD340046	40"x60" / 1016x1524	58W/4,85A	6A	1400-1800
Max (w x h) mm	1200X2415	X	X	X

POWER SUPPLY	
ARTICLE	DESCRIPTION
UYPLD00010	Power supply EU 3,34A 7/24
UYPLD00011	Power supply EU 6,67A 7/24
UYPLD00012	Power supply EU 8,5A 7/24
UYPLD00013	Power supply EU 11,5A 7/24

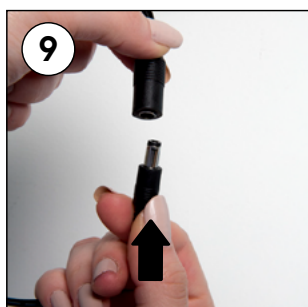
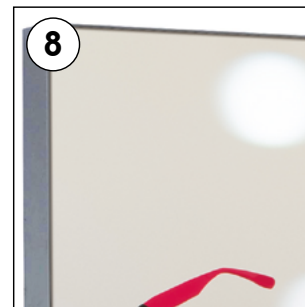
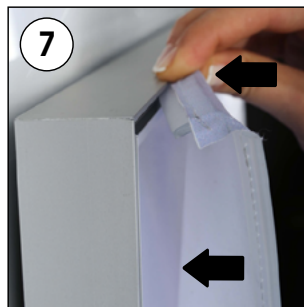
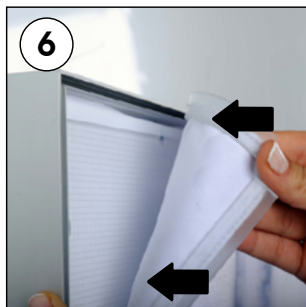
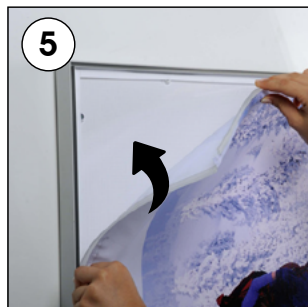
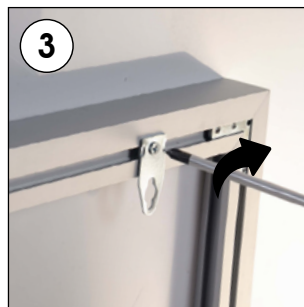
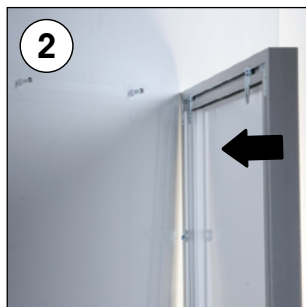
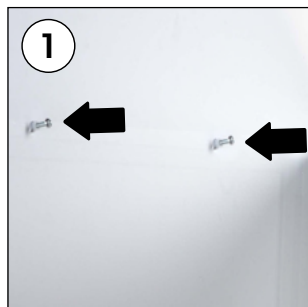
Products are suitable to use 7/16. If 7/24 use required, please order individually as 7/24 power supplies as below:



# INSTALLATION INSTRUCTIONS

Maxi Frame with LED / 1005991

Landscape or portrait position



Switch on "I" position.  
Switch off "0" position.

## CAUTION!

- FRAGILE SWITCH! REMOVE PADS WHEN FULLY INSTALLED.



- Please inform the order number on the product or on the carton (e.g. 1/110001394-460) to the place that you have made the purchase if any problem with the product occurs.
- All rights reserved. All pictures, figures and writings are secured internationally by copy-right law. Infringements will be sued by civil and legal law.

This technical sheet's contents are all subject to update and modification at MT Displays' exclusive discretion. There is nothing official about this document. For final and legally binding information, please get in touch with the sales staff at MT Displays.



T: +90 850 433 67 85 / info@mtdisplays.com / www.mtdisplays.com