

## MINI STREET SIGNPRO BOARD



### MULTIPURPOSE SIDEWALK SIGNS, MADE OF DURABLE PLASTIC

Simple plastic pavement board for multiple purposes. PS Display is suitable for inkjet printing and adhesive folio. Easy to move and store. Recommended graphic materials: self-adhesive poster to stick-on or vinyl sheeting, fluted PP, metal, Plastech PVC foam board to apply with well nut.

### KEY SELECTION ATTRIBUTES

- Double-sided Mini Pavement Sign with Patent Protection.
- One set includes double sided (HDPE) durable plastic boards with recessed sign areas to protect poster faces, a molded-in handle for easy transport, flat folded scissors on two sides for keeping the system stable and saving space during storage.
- Suitable for Outdoor use with 630x500mm poster sizes on both sides.
- Suitable for inkjet printing, self-adhesive posters to stick-on or vinyl sheeting, fluted PP, metal, and Plastech PVC foam board applied with well nuts.
- Logo areas on top with max. 300 x 40 (h) mm print size, are standard and provide space for corporate logo.
- Easy to move and store with 5kg product weight.
- No need to fill up water or sand as it is already constructed with heavy materials.
- Yellow in standard and various RAL colors available upon request.
- Packed in a single box & assembled. No assembly required. Set up in 10 seconds.



Mini Street SignPro Board - Yellow



## COLOURS IN STOCK



Yellow

## COLOUR OPTIONS

White - RAL 9003

Black - RAL 9005

Red - RAL 3020

Blue - RAL 5002

Green - RAL 6029

Yellow - RAL 1021

## SUITABLE FOR

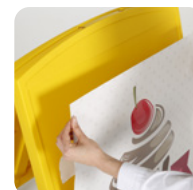
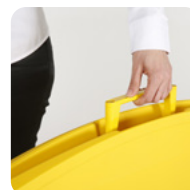
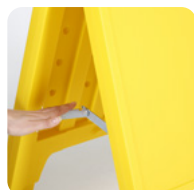
Mini Street Signpro Boards can be used for OUTDOOR applications, for signage needs in many locations like shopping centers, markets, groceries, hotels, offices airports, shops and stores, hospitals, schools, apartments and many more. It is also suitable for traffic management.

## WATCH VIDEO



Watch video at our website  
[www.mtdisplays.com](http://www.mtdisplays.com)

## FEATURES



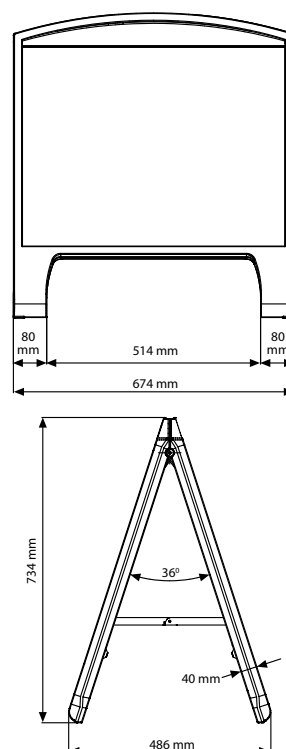
## EXPLODED VIEW



Recommended graphic materials: self-adhesive poster to stick-on or vinyl sheeting, fluted PP, metal, and Plastech PVC foam board to apply with well nut.



## TECHNICAL DRAWING



## PHYSICAL DATA

### Material

Durable HDPE.

### Poster Material

Suitable for inkjet printing, self-adhesive posters to stick-on or vinyl sheeting, fluted PP, metal, and Plastech PVC foam board applied with well nuts.

### Surface Finish

Smooth and suitable for sticker application.

### Recycled Content

Up to 40% recycled content used.

### Warranty

All products are guaranteed for 3 years by MT Displays with below conditions:

[Warranty Conditions](#)

### Storage Conditions

Goods should be stored at 0° to 25°C in a dry place. Store in the original package.

### Installation Considerations

Mini Street Signpro Boards are packed assembled in a single box with an easy-to-understand instruction sheet. One set includes double sided (HDPE) durable plastic boards with recessed sign areas to protect poster faces, a molded-in handle for easy transport, flat folded scissors on two sides for keeping the system stable and saving space during storage. No assembly required. Set up in 10 seconds.

### Design Considerations

Double-sided Mini Pavement Sign with Patent Protection. Suitable for Outdoor use with 630x500mm poster sizes on both sides. Suitable for inkjet printing. Logo areas on top with max. 300 x 40 (h) mm print size, are standard and provide space for corporate logo. Easy to move and store with 5kg product weight. No need to fill up water or sand as it is already constructed with heavy materials.

### Cleaning and Disinfecting

Clean your displays, with damp microfiber clothes, rinsed with simply water or warm, soapy or gentle shampooed water. Avoid using vinegar, abrasive, acidic, alcohol-based or heavy cleaners or cleaners containing Ammonia. Only after cleaning the product, if needed, simply apply disinfectant or sanitizer that is in compliance with your local guidelines and regulations.

### Hazardous Substances

M&T Displays prioritizes compliance with the REACH (Registration, Evaluation, Authorisation and Restriction of Chemicals) and RoHS (Restriction of Hazardous Substances) directives to protect both the environment and human health. We ensure that our products do not contain substances listed under REACH and adhere to strict RoHS limits for hazardous materials. Our manufacturing process ensures that lead, mercury, cadmium, and other restricted substances remain within the permitted thresholds, guaranteeing safe and sustainable products for our customers.

### Patent

PCT/EP2017/052765



T: +90 850 433 67 85 / [info@mtdisplays.com](mailto:info@mtdisplays.com) / [www.mtdisplays.com](http://www.mtdisplays.com)



## PRINT TEMPLATES

**Street Signpro Board - 630 x 550 mm**

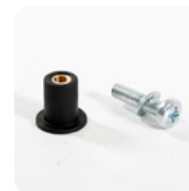
Document Size: 640 x 560 mm (Includes Bleeds)

Finished Size: 630 x 550 mm [Print](#)

## ARTICLES

ARTICLE	GRAPHIC SIZE	DESCRIPTION	WEIGHT	PACKING SIZE
			WITH PACKING	*W X H X D
UPSDM50010	630 X 550 mm	Yellow	6,000 kg	720 X 800 X 105 mm

## OPTIONAL ACCESSORIES

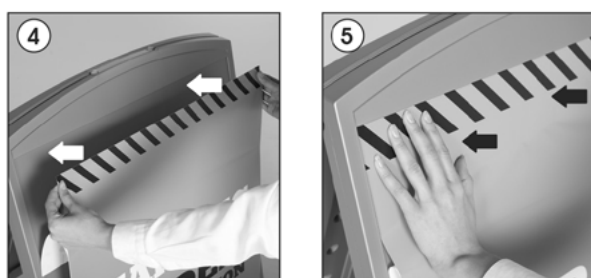


Optional well nuts  
(12 Pcs)  
UYSP00010X1000

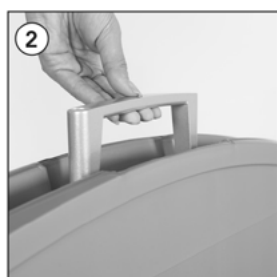
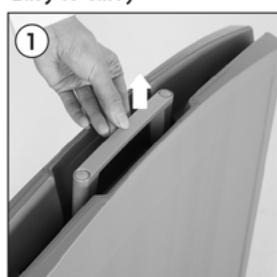


## INSTALLATION INSTRUCTIONS

### Mini Street Signpro Board



### Easy to carry



- Please inform the order number on the product or on the carton (e.g. 1/110001394-460) to the place that you have made the purchase if any problem with the product occurs.
- All rights reserved. All pictures, figures and writings are secured internationally by copy-right law. Infringements will be sued by civil and legal law.

This technical sheet's contents are all subject to update and modification at MT Displays' exclusive discretion. There is nothing official about this document. For final and legally binding information, please get in touch with the sales staff at MT Displays.



T: +90 850 433 67 85 / [info@mtdisplays.com](mailto:info@mtdisplays.com) / [www.mtdisplays.com](http://www.mtdisplays.com)