

# MONO TOTEM



## DOUBLE-SIDED FREE-STANDING AD COLUMNS WITH OPTIONAL LED LIGHTING

Non-snap Mono Totem is offered with and without light. Poster is placed on 2 long sides by slide-in to profile channel. Available sizes are 500x1700 mm and 600x1700 mm. Mono Totem presents poster as double sided. Smooth & durable aluminium construction provides stability. For illuminating options, please contact your Sales Executive.

### KEY SELECTION ATTRIBUTES

- \* Double-sided, curved design, free-standing, totem column offered with or without back-lit LED light.
- \* Front loading frames with non-snap fixed profiles on long sides for keeping the poster and poster protection stable and easy poster replacement.
- \* For the version with lighting, highly powerful and even illumination is achieved with long lasting LED technology bulbs, opal acrylic poster backings and anti-reflex PET poster covers for illuminating the posters without shining. Posters are interlaced among the acrylic backings and PET poster covers on both sides.
- \* For the version with lighting, illumination save up to 60% energy cost with an increased life expectancy.
- \* Suitable for INDOOR applications with 500x1700mm, 600x1700mm poster sizes.
- \* For the version without lighting, one set includes a double sided totem body and non-snap fixed aluminum profiles on long sides; 2 PS backings; 2 matt/clear anti-reflex PET poster covers; 1 powder coated top plate and 1 powder coated heavy steel baseplate for stability; ventilation holes on top and bottom plates; 1 Allen Key (5), 2 Bolts M6, 4 Bolts M4.
- \* For the version with lighting, one set includes a double sided totem body and non-snap fixed aluminum profiles on long sides; back-lit designed LED bulbs; 2 opal acrylic backings to diffuse light across graphics; 2 matt/clear anti-reflex PET poster covers; 1 powder coated top plate and 1 powder coated heavy steel baseplate for stability; ventilation holes on top and bottom plates; 1 Allen Key (5), 2 Bolts M6, 4 Bolts M4, 1 power adapter with 1,5 meter long cable and 1 EU Plug. UK and US plugs are available, should be specified with order. Illuminated version has no switch.
- \* All illuminated items are supplied with quality certificates and CE/UL PAT test reports passed.
- \* RAL9006 grey powder coated main body in standard and various RAL colors available with antimicrobial powder coating.
- \* For the version with lighting, backlit film or translucent poster material should be used for printing the signage.
- \* Packed unassembled in 2 boxes with an easy mounting instruction sheet and fixing hardware for assembly. See info chart for pack sizes.
- \* Heavy elegant base provides stability.



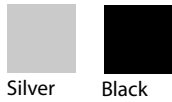
Mono Totem



Mono Totem with Light

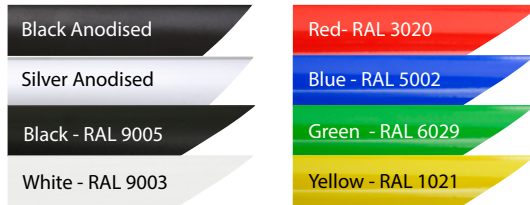


## COLOURS IN STOCK



Silver Black

## COLOUR OPTIONS



## SUITABLE FOR

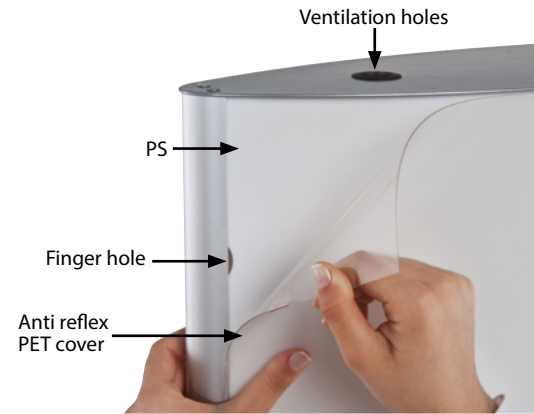
Mono Totem Columns can be used for a wide range of INDOOR applications, for signage needs in many locations like retail point-of-purchase, tradeshow displays, movie theatres, sports facilities, shopping malls, markets, groceries, hotels, airports, shops and stores, hospitals, restaurants, halls, meeting, rooms, gas stations, casinos, and more.

## FEATURES

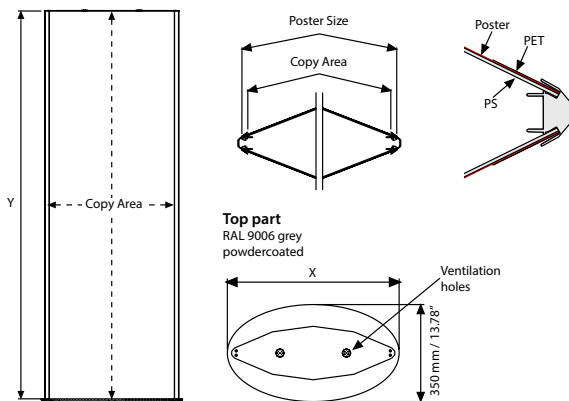


Slide-in profile

## EXPLODED VIEW



## TECHNICAL DRAWING



## ARTICLES

ARTICLE	EXTERNAL (x-y)	POSTER	COPY	DESCRIPTION	WEIGHT	PACKING SIZE
					WITH PACKING	*W X H X D
UTTME10500	520 X 1700 mm	500 X 1700 mm	470 X 1700 mm	without light	18,000 kg	570 X 1750 X 60 mm / 370 X 540 X 40 mm
UTTME10600	620 X 1700 mm	600 X 1700 mm	570 X 1700 mm	without light	20,000 kg	670 X 1750 X 60 mm / 370 X 640 X 40 mm
UTTME00500	520 X 1700 mm	500 X 1700 mm	470 X 1700 mm	with light	19,000 kg	570 X 1750 X 60 mm / 370 X 540 X 40 mm
UTTME00600	620 X 1700 mm	600 X 1700 mm	570 X 1700 mm	with light	21,000 kg	670 X 1750 X 60 mm / 370 X 640 X 40 mm
UTTME00000	23.2" X 67"	27" X 67"	25.8" X 67"	without light	41.887 lbs	29.72" X 67.72" X 2.36" / 14.57" X 25.20" X 1.57"

## PHYSICAL DATA

### Material

Totem body with non-snap fixed aluminium profiles, PS or opal acrylic backings, PET anti-reflex poster covers, steel top and baseplates.

### Poster Material

For the version with lighting, backlit film or translucent poster material should be used for printing the signage.

### Surface Finish

RAL9006 grey powder coated in standard and various RAL colors available with antimicrobial powder coating. Call for custom color requests.

### Recycled Content

Up to 78% recycled content used.

### Warranty

All products are guaranteed for 2 years by MT Displays with below conditions: [Warranty Conditions](#)

### Storage Conditions

Goods should be stored at 0° to 25°C in a dry place. Store in the original package.

### Installation Considerations

Mono Totem Columns are packed unassembled in 2 boxes with an easy mounting instruction sheet and fixing hardware for assembly. See info chart for pack sizes. All illuminated items are supplied with quality certificates and CE/UL PAT test reports passed. For the version without lighting, one set includes a double sided totem body and non-snap fixed aluminum profiles on long sides; 2 PS backings; 2 matt/clear anti-reflex PET poster covers; 1 powder coated top plate and 1 powder coated heavy steel baseplate for stability; ventilation holes on top and bottom plates; 1 Allen Key (5), 2 Bolts M6, 4 Bolts M4. For the version with lighting, one set includes a double sided totem body and non-snap fixed aluminum profiles on long sides; back-lit designed LED bulbs; 2 opal acrylic backings to diffuse light across graphics; 2 matt/clear anti-reflex PET poster covers; 1 powder coated top plate and 1 powder coated heavy steel baseplate for stability; ventilation holes on top and bottom plates; 1 Allen Key (5), 2 Bolts M6, 4 Bolts M4, 1 power adapter with 1,5 meter long cable and 1 EU Plug. UK and US plugs are available, should be specified with order. Illuminated version has no switch.

### Design Considerations

Double-sided, curved design, free-standing, totem column offered with or without back-lit LED light. Front loading frames with non-snap fixed profiles on long sides for keeping the poster and poster protection stable and easy poster replacement. For the version with lighting, highly powerful and even illumination is achieved with long lasting LED technology bulbs, opal acrylic poster backings and anti-reflex PET poster covers for illuminating the posters without shining. Posters are interlaced among the acrylic backings and PET poster covers on both sides. Illumination save up to 60% energy cost with an increased life expectancy. Suitable for INDOOR applications with 500x1700mm, 600x1700mm poster sizes. Heavy elegant base provides stability.

### Cleaning and Disinfecting

Clean your displays, with damp microfiber clothes, rinsed with simply water or warm, soapy or gentle shampooed water. Avoid using vinegar, abrasive, acidic, alcohol-based or heavy cleaners or cleaners containing Ammonia. Only after cleaning the product, if needed, simply apply disinfectant or sanitizer that is in compliance with your local guidelines and regulations.



T: +90 850 433 67 85 / [info@mtdisplays.com](mailto:info@mtdisplays.com) / [www.mtdisplays.com](http://www.mtdisplays.com)

# PRINT TEMPLATES

## Mono Totem - 500 x 1700 mm

Document Size: 510 x 1710 mm (Includes Bleeds)

Finished Size: 500 x 1700 mm [Print](#)

## Mono Totem - 600 x 1700 mm

Document Size: 610 x 1710 mm (Includes Bleeds)

Finished Size: 600 x 1700 mm [Print](#)

## Mono Totem - 27" x 67"

Document Size: 27.4" x 67.4" mm (Includes Bleeds)

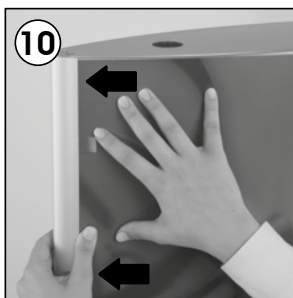
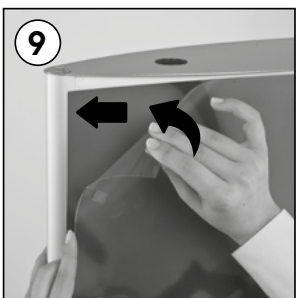
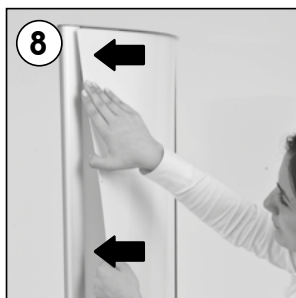
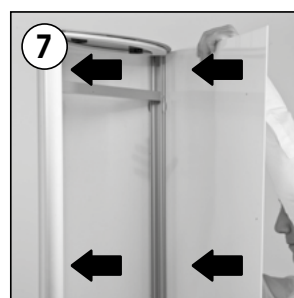
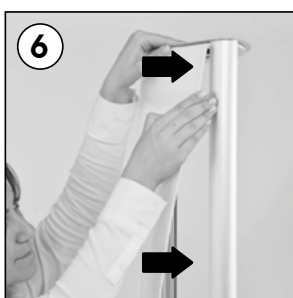
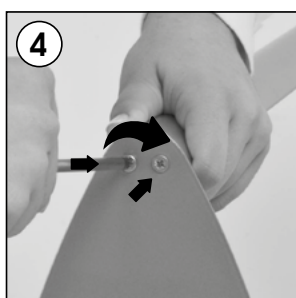
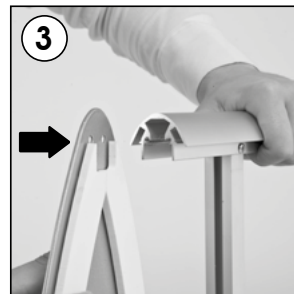
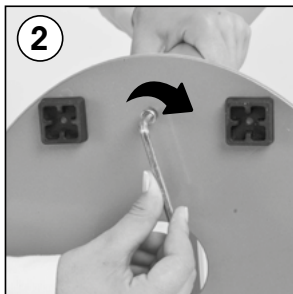
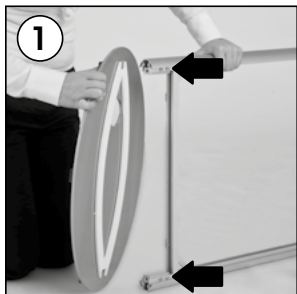
Finished Size: 27" x 67" [Print](#)

# INSTALLATION INSTRUCTIONS

## Mono Totem / 1007008

### Each product package includes mounting accessories

- 1 x Totem main body
- 1 x Totem flange
- 1 x Totem top cover
- 2 x Qpaue acrylic
- 2 x PET cover
- 1 x 5 Allen key
- 2 x Bolt M6x25 mm
- 4 x Bolt M4x16 mm



- Please inform the order number on the product or on the carton (e.g. 1/110001394-460) to the place that you have made the purchase if any problem with the product occurs.
- All rights reserved. All pictures, figures and writings are secured internationally by copy-right law. Infringements will be sued by civil and legal law.



# ILLUMINATED PRODUCTS TECHNICAL MANUAL

## » CABLE

Delivered with 2 meter long cable and EU plug.  
UK, US or CH plugs should be specified with order.



## » FEATURES

- Budget solution.
- Available with or without illumination.

## » TECHNICAL SPECIFICATION

ARTICLE	POSTER	ILLUMINATION	POWER CONSUMPTION	POWER
UTTME00500	500 X 1700 mm	1 X 58 W	58 W	AC 230 V
UTTME00600	600 X 1700 mm	1 X 58 W	58 W	AC 230 V

## » FLUORESCENT FEATURES (FT8/58W/860/GE/SL1/25)

**Color:** 6400 K ( white )

**CRI:** 84

**Luminous Flux:** Typ. 5000 lm @ 6400 K

**Luminous efficacy:** Typ. 86 lm/W @ 6400 K

**Life Time:** 20.000 Hours



## » ASSEMBLY SHEET

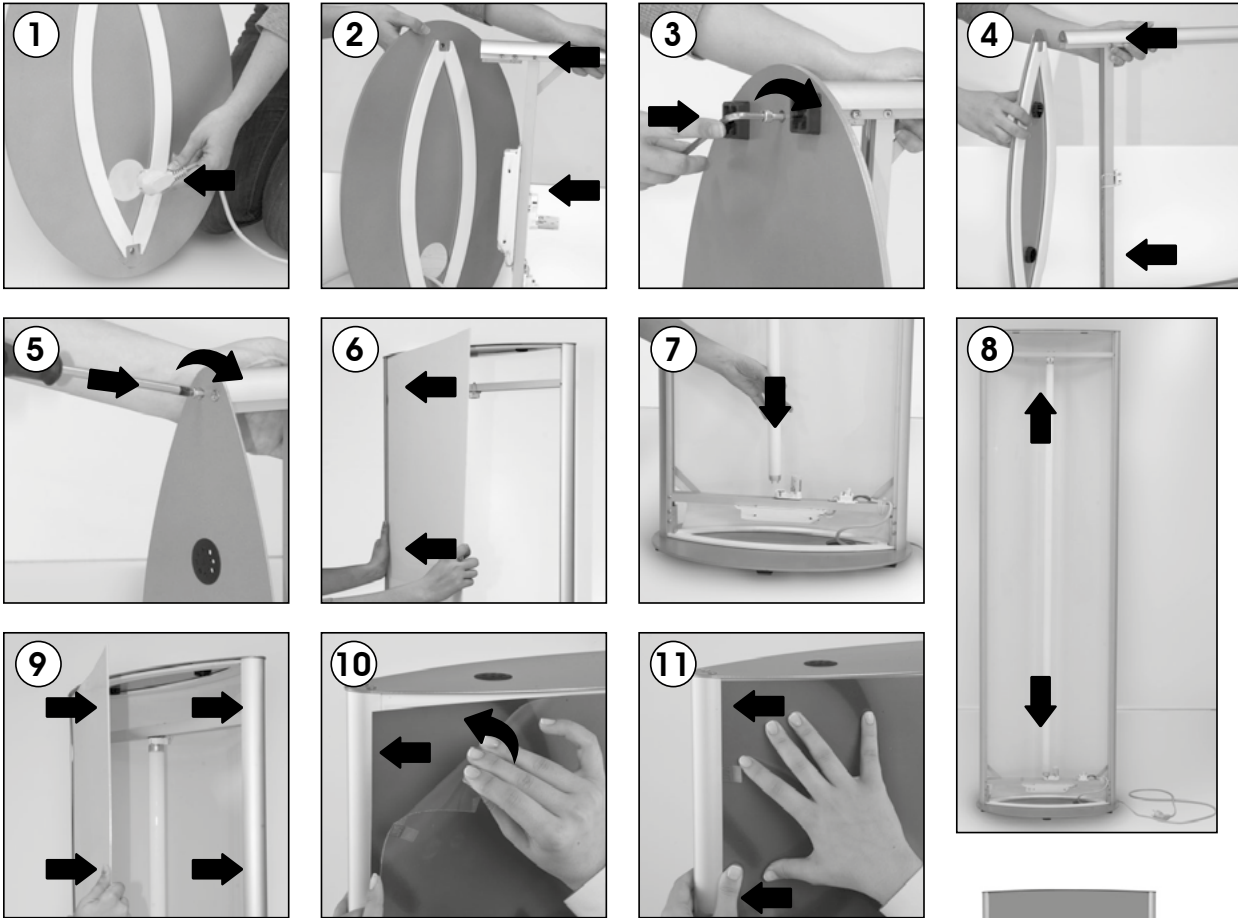


# INSTALLATION INSTRUCTIONS

## Mono Totem with Light / 1006248

### Each product package includes mounting accessories

- 1 x Totem main body
- 1 x Totem flange
- 1 x Totem top cover
- 2 x Qpaue acrylic
- 2 x PET cover
- 1 x Fluorescent
- 1 x Cable 3000 mm
- 1 x 5 Allen key
- 2 x Bolt M6x25 mm
- 4 x Bolt M4x16 mm



- Please inform the order number on the product or on the carton (e.g. 1/110001394-460) to the place that you have made the purchase if any problem with the product occurs.
- All rights reserved. All pictures, figures and writings are secured internationally by copy-right law. Infringements will be sued by civil and legal law.

This technical sheet's contents are all subject to update and modification at MT Displays' exclusive discretion. There is nothing official about this document. For final and legally binding information, please get in touch with the sales staff at MT Displays.



T: +90 850 433 67 85 / info@mtdisplays.com / www.mtdisplays.com