



## FLOOR STANDING FRAME SOLUTIONS FOR BIG FABRIC POSTERS!

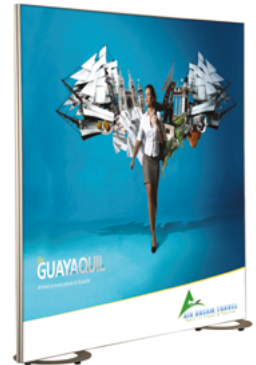
Used with feet to be placed on a floor. The double-sided MAXI FRAMES that are made up of King Profile are named OCEAN MAXI FRAMES. Ocean Frame can be assembled with 4 different feet models. Before the assembly of the profile corners, the connector pieces for the feet need to be fitted into the profiles channels. Then, the feet are assembled over these connector pieces.

### KEY SELECTION ATTRIBUTES

- \* A very new and fresh looking, double-sided, floor standing, Ocean Maxi Frame system, combining aluminium King Profile and sewed or nylon strip for application of big sizes of printed fabric posters.
- \* One of the most attractive frame designs in the market with frameless look when viewed from the front and back sides.
- \* Suitable for INDOOR applications with 1000x2000mm, 1000x3000mm, 1500x2000mm, 1500x3000mm, 2000x2000mm and 2000x3000mm poster sizes.
- \* Ocean Maxi Frames can be ordered in standard sizes. They can also be ordered in special lengths and parts as semi products.
- \* Natural silver-anodized aluminium frame and RAL 9006 powder coated steel feet in standard and various RAL colors available with antimicrobial powder coating. Subject to MOQ.
- \* One set includes a double sided 40mm King Profile frame with 50 mm depth and 4mm thickness; 36x19mm aluminium H-profile for 1000mm and more wider frame sizes; 3mm clear nylon strips; corner connectors and cleats for connecting H-profile.
- \* Ocean Frame can be applied in 2 ways either by hanging to the ceiling or by fitting on feet. The special hanging pieces for fixing the ceiling with the wire cable, need be fixed into the top short side of the Ocean Maxi Frame before the profiles are connected to each other. The connector pieces for the feet also need to be fitted into the profiles channels, before the assembly of the profile corners. Then, the feet are assembled over these connector pieces. 5 different designs of feet are Circle, Hoop, Fillet, Flat and Baseball. The feet for Double Sided Ocean Maxi frame must be ordered separately.
- \* Fabric is not included in the original pack.
- \* Recommended fabric thickness for digital printing is 0,5mm. Thickness of the profile is 4mm. Thickness of nylon strip is 3mm. The pull sticker in 0,5mm thickness must be sewed on the fabric to take out the poster from channels.
- \* 13mm on each side of the fabric into Maxi Profiles (in total 26mm on each Fabric Poster) is not seen on the poster. Please arrange accordingly.
- \* Additional print shares suggested for Maxi Frame's Fabric Posters: 28mm between 200-750mm, 20mm between 750-1500mm, 15mm between 1500-3000mm. These values might vary according to the fabric used.
- \* Profiles and connector parts for the required sizes are packed unassembled in a single box with an easy mounting instruction sheet. The profiles edges are connected by allen key. For larger sizes of Ocean Maxi Frame, H-Profile must be used for stability. Fixing tools are included in each frame. Assembly in 45 seconds.



Ocean Maxi with Fillet feet



Ocean Maxi with Hoop feet



Ocean Maxi with Baseball feet



Ocean Maxi with Circle feet

## COLOURS IN STOCK



Silver

## SUITABLE FOR

Ocean Maxi Double Sided can be used for INDOOR applications, for signage needs in many locations like shopping centers, markets, groceries, hotels, offices airports, shops and stores, hospitals, schools, apartments, banks, car dealers, restaurants, telecom companies, insurance companies, libraries, museums, travel agencies and many more.

## WATCH VIDEO



Watch video at our website [www.mtdisplays.com](http://www.mtdisplays.com)

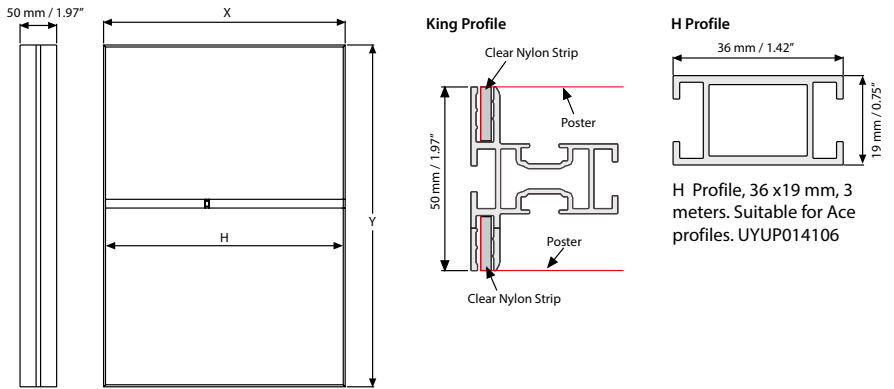
## FEATURES



## EXPLODED VIEW



## TECHNICAL DRAWING



### Application of nylon strip by sew-on process



### Application of nylon strip by double sided tape

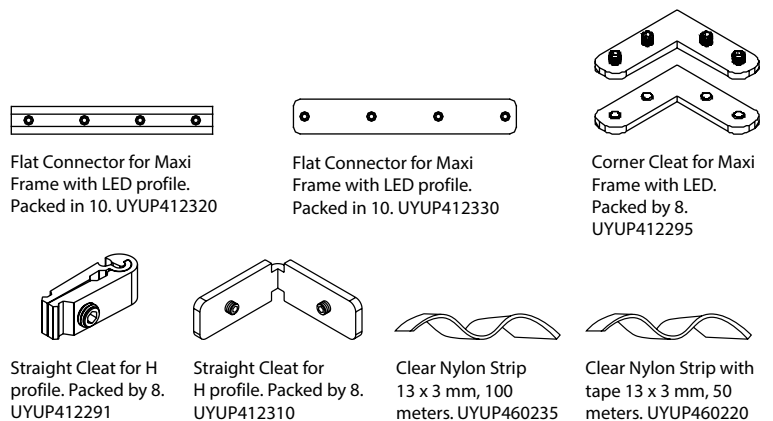


## ARTICLES

ARTICLE	EXTERNAL (x-y)	H (mm)	H (Pcs)	WEIGHT	PACKING SIZE
				WITH PACKING	*W X H X D
UMF0001014	1000 X 1400 mm	-	-	5,050 kg	100 X 1450 X 140 mm
UMF0001015	1000 X 1500 mm	-	-	5,330 kg	100 X 1550 X 140 mm
UMF0001020	1000 X 2000 mm	-	-	6,160 kg	100 X 2080 X 140 mm
UMF0001022	1000 X 2250 mm	920 mm	1	7,340 kg	100 X 2280 X 140 mm
UMF0002015	1500 X 2000 mm	-	-	7,355 kg	100 X 2080 X 140 mm
UMF0002020	2000 X 2000 mm	-	-	8,100 kg	100 X 2080 X 140 mm
UMF0002022	2000 X 2250 mm	1920 mm	1	9,550 kg	100 X 2280 X 140 mm
UMF0003015	3000 X 1500 mm	1420 mm	1	10,220 kg	100 X 3080 X 140 mm
UMF0003020	3000 X 2000 mm	1920 mm	2	12,470 kg	100 X 3080 X 140 mm
UMF0003022	3000 X 2250 mm	2170 mm	2	13,040 kg	100 X 3080 X 140 mm
UMF0004060	40" X 60"	-	-	11.816 lbs	5.51" X 62.01" X 4.33"
UMF0006040	60" X 40"	-	-	11.816 lbs	5.51" X 62.01" X 4.33"
UMF0008790	87" X 90"	83.86"	1	21.274 lbs	5.51" X 92.13" X 4.33"
UMF0001090	100" X 90"	86.85"	1	23.038 lbs	5.51" X 101.97" X 4.33"
UMF0001290	120" X 90"	86.85"	2	28.968 lbs	5.51" X 122.05" X 4.33"
UMF0001890	118" X 90"	86.85"	2	28.660 lbs	5.51" X 120.08" X 4.33"

- Max dimensions 2500(H) x 4000(W) mm and max perimeter 7000 mm.
- Max height 2250 mm if used on feet.

## COMPONENTS OF MAXI FRAMES



T: +90 850 433 67 85 / [info@mtdisplays.com](mailto:info@mtdisplays.com) / [www.mtdisplays.com](http://www.mtdisplays.com)

## FEETS OF MAXI FRAMES



BASEBALL FEET : RAL 9006 Powder coated. 6mm steel.		
ARTICLE	SIZE	WEIGHT
UYUP412273	450 X 300 X 6 mm	4,700 kg



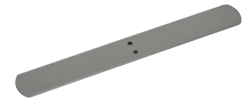
HOOP FEET : RAL 9006 Powder coated. 6mm steel.		
ARTICLE	SIZE	WEIGHT
UYUP412272	Ø 450 X 6 mm	4,400 kg



CIRCLE FEET : RAL 9006 Powder coated. 6mm steel.		
ARTICLE	SIZE	WEIGHT
UYUP412271	Ø 450 X 6 mm	7,500 kg



FILLET FEET : RAL 9006 Powder coated. 6mm steel.		
ARTICLE	SIZE	WEIGHT
UYUP412274	500 X 180 X 6 mm	3,300 kg



FLAT FEET : RAL 9006 Powder coated. 6mm steel.		
ARTICLE	SIZE	WEIGHT
UYUP412275	400 X 50 X 5 mm	7,200 kg

## PHYSICAL DATA

### Material

40mm aluminium profile frame with 50mm depth, 36x19mm aluminium H-profile, clear nylon strips, metal corner connectors and cleats, powder coated steel feet.

### Surface Finish

Natural silver-anodized aluminium frame and RAL 9006 powder coated steel feet in standard and various RAL colors available with antimicrobial powder coating. Subject to MOQ. Call for custom color requests.

### Storage Conditions

Goods should be stored at 0° to 25°C in a dry place. Store in the original package.

### Recycled Content

Up to 78% recycled content used.

### Warranty

All products are guaranteed for 3 years by MT Displays with below conditions:

[Warranty Conditions](#)

### Poster Material & Thickness

Recommended fabric thickness for digital printing is 0,5mm. Thickness of the channel is 4mm. Thickness of nylon strip is 3mm. The pull sticker in 0,5mm thickness must be sewed on the fabric to take out the poster from channels.

### Installation Considerations

Profiles and connector parts of Ocean Maxi Double Sided for the required sizes are packed unassembled in a single box with an easy mounting instruction sheet. One set includes a double sided 40mm King Profile frame with 50 mm depth and 4mm thickness; 36x19mm aluminium H-profile for 1000mm and more wider frame sizes; 3mm clear nylon strips; corner connectors and cleats for connecting H-profile. The profiles edges are connected by allen key. For larger sizes of Ocean Maxi Frame, H-Profile must be used for stability. Fixing tools are included in each frame. Assembly in 45 seconds. Ocean Frame can be applied in 2 ways either by hanging to the ceiling or by fitting on feet. The special hanging pieces for fixing the ceiling with the wire cable, need be fixed into the top short side of the Ocean Maxi Frame before the profiles are connected to each other. The connector pieces for the feet also need to be fitted into the profiles channels, before the assembly of the profile corners. Then, the feet are assembled over these connector pieces. 5 different designs of feet are Circle, Hoop, Fillet, Flat and Baseball. The feet for Double Sided Ocean Maxi frame must be ordered separately. Fabric is not included in the original pack. 13mm on each side of the fabric into Maxi Profiles (in total 26mm on each Fabric Poster) is not seen on the poster. Please arrange accordingly. Additional print shares suggested for Maxi Frame's Fabric Posters: 28mm between 200-750mm, 20mm

between 750-1500mm, 15mm between 1500-3000mm. These values might vary according to the fabric used. Ocean Maxi Frames can be ordered in standard sizes. They can also be ordered in special lengths and parts as semi products.

### Design Considerations

A very new and fresh looking, double-sided, floor standing, Ocean Maxi Frame system, combining aluminium King Profile and sewed or nylon strip for application of big sizes of printed fabric posters. One of the most attractive frame designs in the market with frameless look when viewed from the front and back sides. Suitable for INDOOR applications with 1000x2000mm, 1000x3000mm, 1500x2000mm, 1500x3000mm, 2000x2000mm and 2000x3000mm poster sizes.

### Cleaning and Disinfecting

Clean your displays, with damp microfiber clothes, rinsed with simply water or warm, soapy or gentle shampooed water. Avoid using vinegar, abrasive, acidic, alcohol-based or heavy cleaners or cleaners containing Ammonia. Only after cleaning the product, if needed, simply apply disinfectant or sanitizer that is in compliance with your local guidelines and regulations.

## PRINT TEMPLATES

### Ocean Maxi - 1000 x 1400 mm

Document Size: 1060 x 1460 mm (Includes Bleeds)  
Finished Size: 1000 x 1400 mm [Print](#)

### Ocean Maxi - 1000 x 1500 mm

Document Size: 1060 x 1560 mm (Includes Bleeds)  
Finished Size: 1000 x 1500 mm [Print](#)

### Ocean Maxi - 1000 x 2000 mm

Document Size: 1060 x 2060 mm (Includes Bleeds)  
Finished Size: 1000 x 2000 mm [Print](#)

### Ocean Maxi - 1000 x 2250 mm

Document Size: 1060 x 2310 mm (Includes Bleeds)  
Finished Size: 1000 x 2250 mm [Print](#)

### Ocean Maxi - 1500 x 2000 mm

Document Size: 1560 x 2060 mm (Includes Bleeds)  
Finished Size: 1500 x 2000 mm [Print](#)

### Ocean Maxi - 2000 x 2000 mm

Document Size: 2060 x 2060 mm (Includes Bleeds)  
Finished Size: 2000 x 2000 mm [Print](#)

### Ocean Maxi - 2000 x 2250 mm

Document Size: 2060 x 2310 mm (Includes Bleeds)  
Finished Size: 2000 x 2250 mm [Print](#)

### Ocean Maxi - 3000 x 1500 mm

Document Size: 3060 x 1560 mm (Includes Bleeds)  
Finished Size: 3000 x 1500 mm [Print](#)

### Ocean Maxi - 3000 x 2000 mm

Document Size: 3060 x 2060 mm (Includes Bleeds)  
Finished Size: 3000 x 2000 mm [Print](#)

### Ocean Maxi - 3000 x 2250 mm

Document Size: 3060 x 2310 mm (Includes Bleeds)  
Finished Size: 3000 x 2250 mm [Print](#)

### Ocean Maxi - 40" x 60"

Document Size: 42.36" x 62.36" (Includes Bleeds)  
Finished Size: 40" x 60" (1016x1524 mm)

### Ocean Maxi - 60" x 40"

Document Size: 62.36" x 42.36" (Includes Bleeds)  
Finished Size: 60" x 40" (1524x1016 mm)

### Ocean Maxi - 87" x 90"

Document Size: 89.36" x 92.36" (Includes Bleeds)  
Finished Size: 87" x 90" (2209x2286 mm)

### Ocean Maxi - 100" x 90"

Document Size: 102.36" x 92.36" (Includes Bleeds)  
Finished Size: 100" x 90" (2540x2286 mm)

### Ocean Maxi - 120" x 90"

Document Size: 122.36" x 92.36" (Includes Bleeds)  
Finished Size: 120" x 90" (3048x2286 mm)

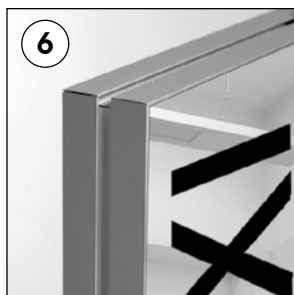
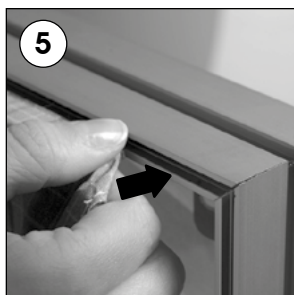
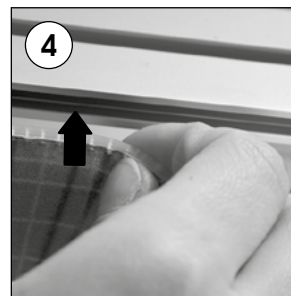
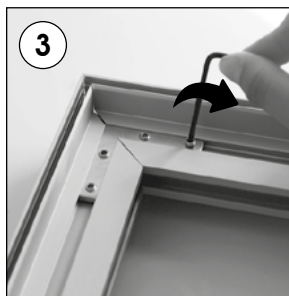
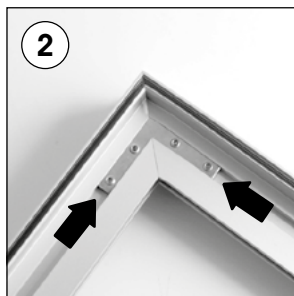
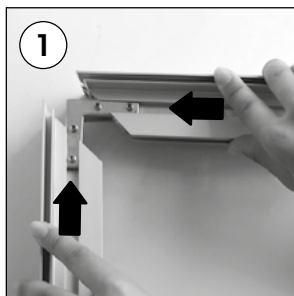
### Ocean Maxi - 118" x 90"

Document Size: 120.36" x 92.36" (Includes Bleeds)  
Finished Size: 118" x 90" (2997x2286 mm)

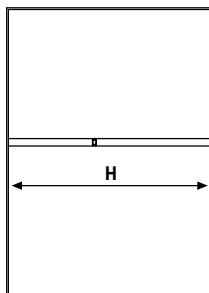
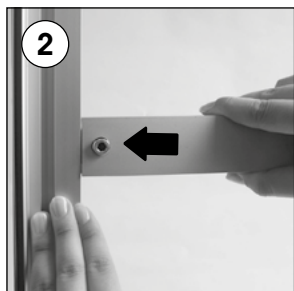
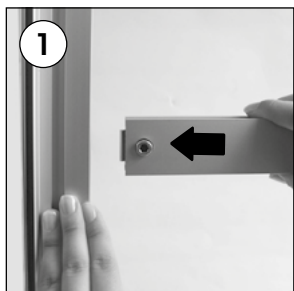


# INSTALLATION INSTRUCTIONS

King Profile - Ocean Maxi / 1004896



## Assembly of H profile



Assembly of H profile		
Poster	H (Size)	H (Pcs)
1000 X 2250 mm	920 mm	1
2000 X 2250 mm	1920 mm	1
3000 X 1500 mm	1420 mm	1
3000 X 2000 mm	1920 mm	2
3000 X 2250 mm	2170 mm	2

## Feets of Maxi Frame (To be used with Double Sided King Profile)



•Circle Ø 450 x 6mm  
single packed.

•Teller-Fuß 450 x 6 mm  
Einzel verpackt



•Hoop Ø 450 x 6mm  
single packed.

•Kreis-Fuß 450 x 6 mm  
Einzel verpackt



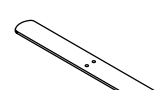
•Baseball 450 x 300 x 6mm  
single packed.

•Oval-Fuß 450 x 300 x 6mm  
Einzel verpackt



•Fillet 500 x 180 x 6mm  
single packed.

•Design-Fuß 500 x 180 x 6mm  
Einzel verpackt



•Flat 450 x 50 x 5mm  
single packed.

•Flach-Fuß 450 x 50 x 5mm  
Einzel verpackt

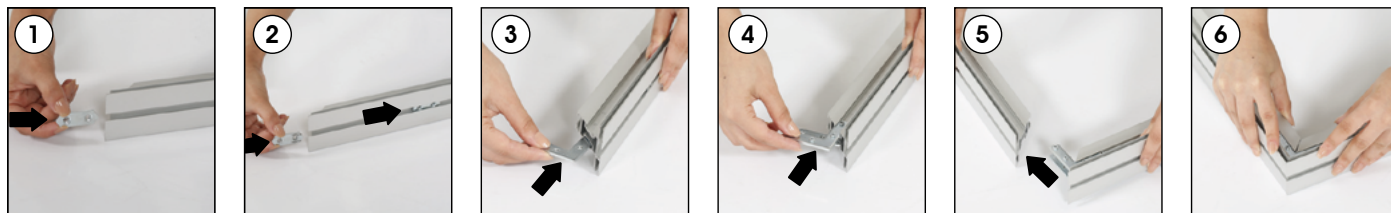
- Please inform the order number on the product or on the carton (e.g. 1/110001394-460) to the place that you have made the purchase if any problem with the product occurs.
- All rights reserved. All pictures, figures and writings are secured internationally by copy-right law. Infringements will be sued by civil and legal law.



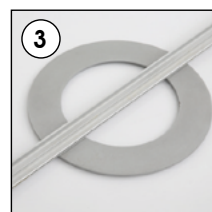
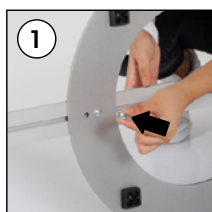
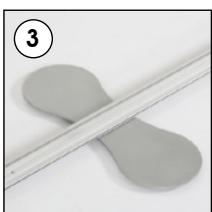
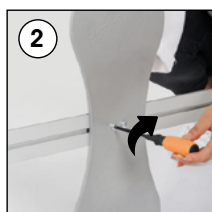
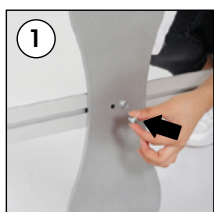
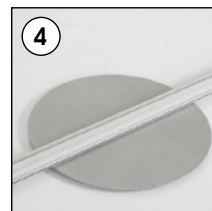
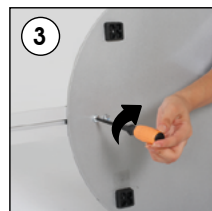
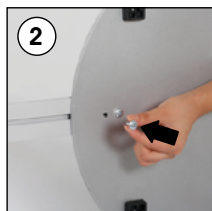
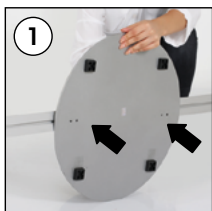
T: +90 850 433 67 85 / info@mtdisplays.com / www.mtdisplays.com

# INSTALLATION INSTRUCTIONS

## Ocea Maxi Feet

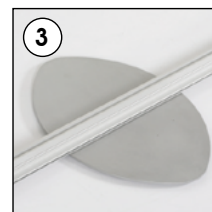
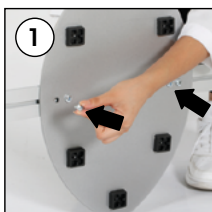
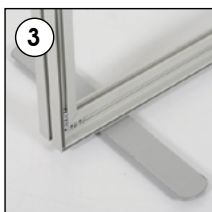


**CIRCLE FEET**  
Each product includes  
• 1 x Circle feet  
• 4 x Bolt M6x12  
• 2 x Nut M6



**FILLET FEET** Each product includes  
• 1 x Fillet feet  
• 4 x Bolt M6x12  
• 2 x Nut M6

**HOOP FEET** Each product includes  
• 1 x Hoop feet  
• 4 x Bolt M6x12  
• 2 x Nut M6



**FLAT FEET** Each product includes  
• 1 x Flat feet  
• 4 x Bolt M6x12  
• 2 x Nut M6

**BASEBALL FEET** Each product includes  
• 1 x Baseball feet  
• 4 x Bolt M6x12  
• 2 x Nut M6



Circle Feet



Fillet Feet



Hoop Feet



Flat Feet



Baseball Feet

### CAUTION/VORSICHT:

• Leg linkage nut must be slid to the channel, BEFORE the profiles to be put together at the corner.

werden.

• Please inform the order number on the product or on the carton (e.g. 1/110001394-460) to the place that you have made the purchase if any problem with the product occurs.  
• All rights reserved. All pictures, figures and writings are secured internationally by copy-right law. Infringements will be sued by civil and legal law.

This technical sheet's contents are all subject to update and modification at MT Displays' exclusive discretion. There is nothing official about this document. For final and legally binding information, please get in touch with the sales staff at MT Displays.



T: +90 850 433 67 85 / info@mtdisplays.com / www.mtdisplays.com