

RIVER MAXI SINGLE SIDED

MAXI
frame



A NEW AND FRESH ALTERNATIVE! FRAMELESS LOOKING DESIGN!

Suitable for outdoor use. 4xA4, 6xA4, 9xA4, 12xA4 paper capacity sizes are available. Noticeboard can be used both in portrait and landscape positions. Each unit includes a free set of pins or magnets. The profile width is 70 mm and the depth of the case 50 mm.

KEY SELECTION ATTRIBUTES

- * A very new and fresh looking, single-sided, wall hanging, River Maxi Frame system, combining aluminium Valet Profile and sewed or nylon strip for application of printed fabric posters.
- * One of the most attractive frame designs in the market with frameless look when viewed from the front side.
- * Suitable for INDOOR applications with A1, A2, A3, A4, B1, B2 and 500x1000mm poster sizes in portrait and landscape position. Max. dimension is 700x1400mm and max. perimeter is 4200mm.
- * River Maxi Frames can be ordered in standard sizes. They can also be ordered in special lengths and parts as semi products.
- * Natural silver-anodized in standard and various RAL colors available with antimicrobial powder coating. Subject to MOQ.
- * One set includes a single sided 15x22mm Valet Profile frame with 4mm channel thickness; 3mm clear nylon strips; L-Type Corner Connectors.
- * Hang by using the assembling holes.
- * Fabric is not included in the original pack.
- * Recommended fabric thickness for digital printing is 0,5mm. Thickness of the channel is 4mm. Thickness of nylon strip is 3mm. The pull sticker in 0,5mm thickness must be sewed on the fabric to take out the poster from channels.
- * 13mm on each side of the fabric into Maxi Profiles (in total 26mm on each Fabric Poster) is not seen on the poster. Please arrange accordingly.
- * Additional print shares suggested for Maxi Frame's Fabric Posters: 28mm between 200-750mm, 20mm between 750-1500mm, 15mm between 1500-3000mm. These values might vary according to the fabric used.
- * Profiles and connector parts for the required sizes are packed unassembled in a single box with an easy mounting instruction sheet. Fixing tools are included in each frame.



COLOURS IN STOCK



Silver

SUITABLE FOR

River Maxi Single Sided can be used for INDOOR applications, for signage needs in many locations like shopping centers, markets, groceries, hotels, offices airports, shops and stores, hospitals, schools, apartments, banks, car dealers, restaurants, telecom companies, insurance companies, libraries, museums, travel agencies and many more.

WATCH VIDEO

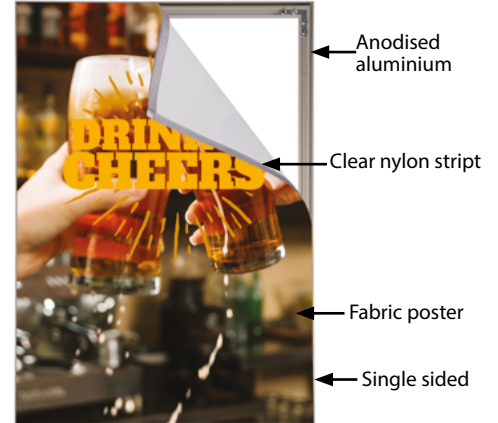


Watch video at our website
www.mtdisplays.com

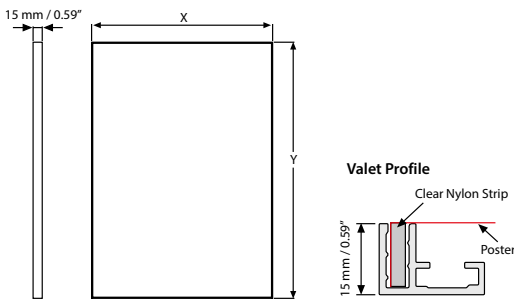
FEATURES



EXPLODED VIEW



TECHNICAL DRAWING



Application of nylon strip by sew-on process



Application of nylon strip by double sided tape



ARTICLES

ARTICLE	EXTERNAL (x-y)	WEIGHT	PACKING SIZE
		WITH PACKING	*W X H X D
UMFR0000A4	210 X 297 mm	0,510 kg	45 X 350 X 70 mm
UMFR0000A3	297 X 420 mm	0,635 kg	45 X 470 X 70 mm
UMFR0000A2	420 X 594 mm	0,810 kg	45 X 650 X 70 mm
UMFR0000A1	594 X 841 mm	1,095 kg	45 X 890 X 70 mm
UMFR0000B2	500 X 700 mm	0,910 kg	45 X 750 X 70 mm
UMFR0000B1	700 X 1000 mm	1,230 kg	45 X 1050 X 70 mm
UMFR000510	500 X 1000 mm	1,130 kg	45 X 1050 X 70 mm
UMFR000017	11" X 17"	1.399 lbs	2.36" X 18.90" X 1.57"
UMFR000018	18" X 24"	1.851 lbs	2.36" X 25.98" X 1.57"
UMFR000022	22" X 28"	2.149 lbs	2.36" X 30.31" X 1.57"
UMFR000024	24" X 36"	2.458 lbs	2.36" X 37.99" X 1.57"
UMFR000074	27" X 40"	2.623 lbs	2.36" X 41.93" X 1.57"

Suggested additional print shares for Maxi Frame's Fabric Posters

Between 200 - 750 mm	28 mm
Between 750 - 1500 mm	20 mm
Between 1500 - 3000 mm	15 mm

e.g. Maxi frame size: 1000x300 mm
printed fabric size must be 1020x328 mm.
But these values might vary according to the fabric material used.

COMPONENTS OF MAXI FRAMES



L TYPE Corner Connector for RIVER. Packed by 10.
UYUP025010



Clear Nylon Strip
13 x 3 mm, 100 meters.
UYUP460235



Clear Nylon Strip with tape
13 x 3 mm, 50 meters.
UYUP460220



T: +90 850 433 67 85 / info@mtdisplays.com / www.mtdisplays.com

PHYSICAL DATA

Material

22mm aluminium profile frame with 15mm depth, clear nylon strips, L-Type metal corner connectors.

Surface Finish

Natural silver-anodized in standard and various RAL colors available with antimicrobial powder coating. Subject to MOQ. Call for custom color requests.

Storage Conditions

Goods should be stored at 0° to 25°C in a dry place. Store in the original package.

Recycled Content

Up to 78% recycled content used.

Warranty

All products are guaranteed for 3 years by MT Displays with below conditions:

[Warranty Conditions](#)

Poster Material & Thickness

Recommended fabric thickness for digital printing is 0,5mm. Thickness of the channel is 4mm.

Thickness of nylon strip is 3mm. The pull sticker in 0,5mm thickness must be sewed on the fabric to take out the poster from channels.

Installation Considerations

Profiles and connector parts of River Maxi Single Sided for the required sizes are packed unassembled in a single box with an easy mounting instruction sheet. Fixing tools are included in each frame. One set includes a single sided 15x22mm Valet Profile frame with 4mm channel thickness; 3mm clear nylon strips; L-Type Corner Connectors. Hang by using the assembling holes. Fabric is not included in the original pack. 13mm on each side of the fabric into Maxi Profiles (in total 26mm on each Fabric Poster) is not seen on the poster. Please arrange accordingly. Additional print shares suggested for Maxi Frame's Fabric Posters: 28mm between 200-750mm, 20mm between 750-1500mm, 15mm between 1500-3000mm. These values might vary according to the fabric used. River Maxi Frames can be ordered in standard sizes. They can also be ordered in special lengths and parts as semi products.

Design Considerations

A very new and fresh looking, single-sided, wall hanging, River Maxi Frame system, combining aluminium Valet Profile and sewed or nylon strip for application of printed fabric posters. One of the most attractive frame designs in the market with frameless look when viewed from the front side. Suitable for INDOOR applications with A1, A2, A3, A4, B1, B2 and 500x1000mm poster sizes in portrait and landscape position. Max. dimension is 700x1400mm and max. perimeter is 4200mm.

Cleaning and Disinfecting

Clean your displays, with damp microfiber clothes, rinsed with simply water or warm, soapy or gentle shampooed water. Avoid using vinegar, abrasive, acidic, alcohol-based or heavy cleaners or cleaners containing Ammonia. Only after cleaning the product, if needed, simply apply disinfectant or sanitizer that is in compliance with your local guidelines and regulations.

PRINT TEMPLATES

River Maxi - A4

Document Size: 270x357 mm (Includes Bleeds)
Finished Size: A4 (210 x 297 mm) [Print](#)

River Maxi - A3

Document Size: 357 x 480 mm (Includes Bleeds)
Finished Size: A3 (297 x 420 mm) [Print](#)

River Maxi - A2

Document Size: 480 x 654 mm (Includes Bleeds)
Finished Size: A2 (420 x 594 mm) [Print](#)

River Maxi - A1

Document Size: 654 x 901 mm (Includes Bleeds)
Finished Size: A1 (594 x 841 mm) [Print](#)

River Maxi - B2

Document Size: 560 x 760 mm (Includes Bleeds)
Finished Size: B2 (500 x 700 mm) [Print](#)

River Maxi - B1

Document Size: 760 x 1060 mm (Includes Bleeds)
Finished Size: B1 (700 x 1000 mm) [Print](#)

River Maxi - 500 x 1000 mm

Document Size: 560 x 1060 mm (Includes Bleeds)
Finished Size: 500 x 1000 mm [Print](#)

River Maxi - 11"x17"

Document Size: 13.36" x 19.36" (Includes Bleeds)
Finished Size: 11"x17" (279.4 x 431.8 mm)

River Maxi - 18"x24"

Document Size: 20.36" x 26.36" (Includes Bleeds)
Finished Size: 18"x24" (457.2x609.6 mm)

River Maxi - 22"x28"

Document Size: 24.36" x 30.36" (Includes Bleeds)
Finished Size: 22"x28" (558.8x711.2 mm)

River Maxi - 24"x36"

Document Size: 26.36" x 38.36" (Includes Bleeds)
Finished Size: 24"x36" (609.6x914.4 mm)

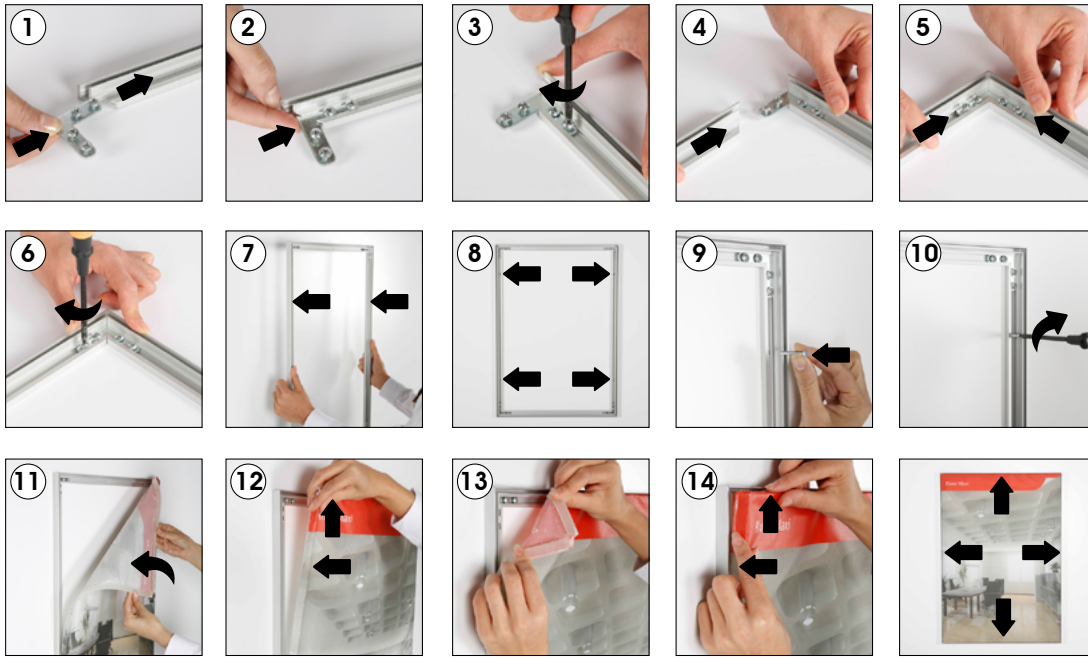
River Maxi - 27"x40"

Document Size: 29.36" x 42.36" (Includes Bleeds)
Finished Size: 27"x40" (685.8x1016 mm)



INSTALLATION INSTRUCTIONS

Valet Profile / River Maxi / 1004754



• Please inform the order number on the product or on the carton (e.g. 1/110001394-460) to the place that you have made the purchase if any problem with the product occurs.
• All rights reserved. All pictures, figures and writings are secured internationally by copy-right law. Infringements will be sued by civil and legal law.

This technical sheet's contents are all subject to update and modification at MT Displays' exclusive discretion. There is nothing official about this document. For final and legally binding information, please get in touch with the sales staff at MT Displays.



T: +90 850 433 67 85 / info@mtdisplays.com / www.mtdisplays.com