

## SINGLE SIDED SLIDE-IN FRAMES



### IDEAL FOR BUSY COMMERCIAL AREAS THAT FREQUENTLY CHANGES POSTERS

A practical frame enabling you to easily change your posters by sliding the graphics in & out. This single sided Slide-in Frame allows you to quickly make changes to the signs, once you have mounted this placeholder on the wall, you never need to take it apart to change the posters. The same poster frame can be mounted in landscape and portrait position. The poster is inserted from the top or side easily by sliding the back. Each poster frame can be easily mounted on wall with two screws and two anchors (supplied). The wall mounting holes are hidden inside the frame. This slide-in poster frame is a very effective way to publish signage and advertising within a commercial environment.

### KEY SELECTION ATTRIBUTES

- Ideal for posters of various sizes.
- Custom sizes options ranging from a minimum of 148x210mm to a maximum of 1200x1200mm.
- Natural silver-anodized and various RAL colors are available with antimicrobial powder coating.
- Anti-glare poster cover sheet.
- Landscape and portrait positions.



Silver Landscape



Black Portrait



## COLOURS IN STOCK



Silver Black

## COLOUR OPTIONS

White - RAL 9003

Red - RAL 3020

Blue - RAL 5002

Green - RAL 6029

Yellow - RAL 1021

## SUITABLE FOR

Slide-in Frame can be used for INDOOR applications, for signage needs in many locations like shopping centers, markets, groceries, hotels, offices airports, shops and stores, hospitals, schools, apartments, banks, car dealers, restaurants, telecom companies, insurance companies, libraries, museums, travel agencies and many more.

## WATCH VIDEO

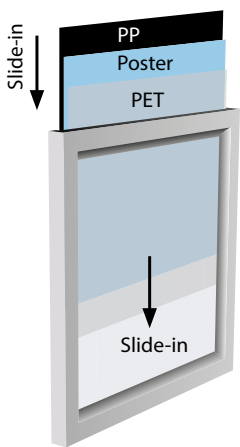


Watch video at our website  
www.mtdisplays.com

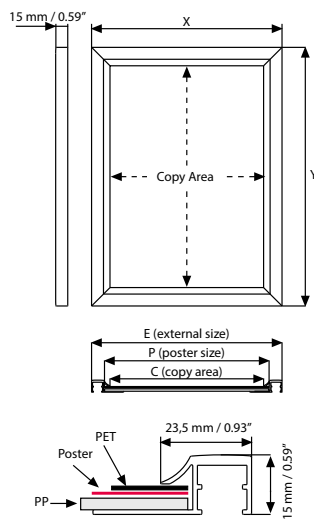
## FEATURES



## EXPLODED VIEW



## TECHNICAL DRAWING



## ARTICLES

					WEIGHT	PACKING SIZE
					WITH PACKING	*W X H X D
UCS245N1A4	UCS245B1A4	243 X 330 mm	210 X 297 mm	196 X 283 mm	0,320 kg	260 X 350 X 21 mm
UCS245N1A3	UCS245B1A3	330 X 453 mm	297 X 420 mm	283 X 406 mm	0,700 kg	350 X 460 X 21 mm
UCS245N1A2	UCS245B1A2	453 X 627 mm	420 X 594 mm	406 X 580 mm	1,100 kg	460 X 660 X 21 mm
UCS245N1A1	UCS245B1A1	627 X 874 mm	594 X 841 mm	580 X 827 mm	2,200 kg	650 X 900 X 21 mm
UCS245N1B2	UCS245B1B2	533 X 733 mm	500 X 700 mm	486 X 686 mm	1,350 kg	550 X 750 X 21 mm
UCS245N181	UCS245B181	9.80" X 12.32"	8.5" X 11"	7.95" X 10.47"	1.102 lbs	10.63" X 12.99" X 0.83"
UCS245N117	UCS245B117	12.32" X 18.31"	11" X 17"	10.47" X 16.46"	1.873 lbs	12.99" X 18.90" X 0.83"
UCS245N118	UCS245B118	19.33" X 25.31"	18" X 24"	17.48" X 23.46"	2.645 lbs	20.08" X 25.98" X 0.83"
UCS245N123	UCS245B123	21.30" X 31.30"	20" X 30"	19.45" X 29.45"	3.328 lbs	22.05" X 31.89" X 0.83"
UCS245N122	UCS245B122	23.30" X 29.30"	22" X 28"	21.46" X 27.48"	3.637 lbs	24.02" X 30.31" X 0.83"
UCS245N124	UCS245B124	25.30" X 37.30"	24" X 36"	23.45" X 35.45"	4.850 lbs	25.59" X 37.80" X 0.83"

## PHYSICAL DATA

### Material

Aluminum profiles.  
PET poster cover and PP backing.

### Surface Finish

Silver anodized or black colour, antimicrobial powder coating. Custom colors also available, call for custom color requests.

### Recycled Content

Up to 78% recycled content used.

### Warranty

All products are guaranteed for 3 years by MT Displays with below conditions:  
[Warranty Conditions](#)

### Storage Conditions

Goods should be stored at 0° to 25°C in a dry place.  
Store in the original package.

### Installation Considerations

Each frame includes wall mounting accessories (2 screws & 2 anchors) Each frame is packed individual in carton box. Color options black & silver-anodized. No easy access to poster, suitable for highly frequented traffic areas.

### Design Considerations

Suitable for silk screen printing, max. letter height is 13 mm.

### Cleaning and Disinfecting

Clean your displays, with damp microfiber clothes, rinsed with simply water or warm, soapy or gentle shampooed water. Avoid using vinegar, abrasive, acidic, alcohol-based or heavy cleaners or cleaners containing Ammonia. Only after cleaning the product, if needed, simply apply disinfectant or sanitizer that is in compliance with your local guidelines and regulations.



T: +90 850 433 67 85 / info@mtdisplays.com / www.mtdisplays.com

# PRINT TEMPLATES

## Single Sided Slide-in Frame - A4

Document Size: 220 x 307 mm (Includes Bleeds)  
 Finished Size: A4 (210 x 297 mm) [Print](#)

## Single Sided Slide-in Frame - A3

Document Size: 307 x 430 mm (Includes Bleeds)  
 Finished Size: A3 (297 x 420 mm) [Print](#)

## Single Sided Slide-in Frame - A2

Document Size: 430 x 604 mm (Includes Bleeds)  
 Finished Size: A2 (420 x 594 mm) [Print](#)

## Single Sided Slide-in Frame - A1

Document Size: 604 x 851 mm (Includes Bleeds)  
 Finished Size: A1 (594 x 841 mm) [Print](#)

## Single Sided Slide-in Frame - B2

Document Size: 510 x 710 mm (Includes Bleeds)  
 Finished Size: B2 (500 x 700 mm) [Print](#)

## Single Sided Slide-in Frame - 8.5"x11"

Document Size: 8.9" x 11.4" (Includes Bleeds)  
 Finished Size: 8.5"x11" (215.9x279.4 mm)

## Single Sided Slide-in Frame - 11"x17"

Document Size: 11.4" x 17.4" (Includes Bleeds)  
 Finished Size: 11"x17" (279.4x431.8 mm)

## Single Sided Slide-in Frame - 18"x24"

Document Size: 18.4" x 24.4" (Includes Bleeds)  
 Finished Size: 18"x24" (457.2x609.6 mm)

## Single Sided Slide-in Frame - 20"x30"

Document Size: 20.4" x 30.4" (Includes Bleeds)  
 Finished Size: 20"x30" (508x762 mm) [Print](#)

## Single Sided Slide-in Frame - 22"x28"

Document Size: 22.4" x 28.4" (Includes Bleeds)  
 Finished Size: 22"x28" (558.8x711.1 mm)

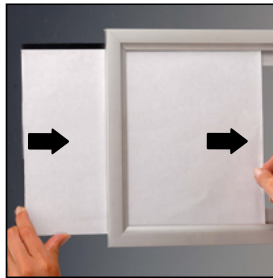
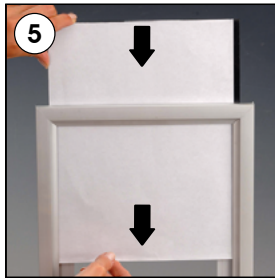
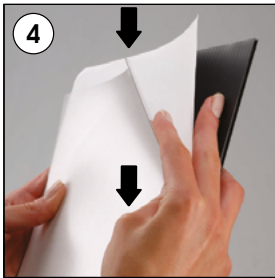
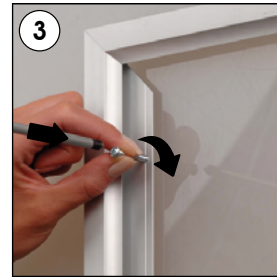
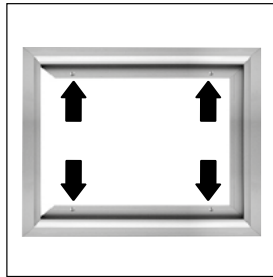
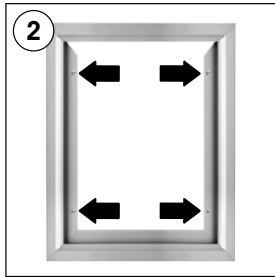
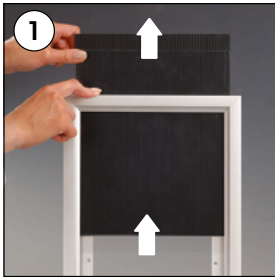
## Single Sided Slide-in Frame - 24"x36"

Document Size: 24.4" x 36.4" (Includes Bleeds)  
 Finished Size: 24"x36" (609.6x914.4 mm)

# INSTALLATION INSTRUCTIONS

## Single Sided Slide-in Frame / 1001960

Portrait or landscape position



- Please inform the order number on the product or on the carton (e.g. 1/110001394-460) to the place that you have made the purchase if any problem with the product occurs.
- All rights reserved. All pictures, figures and writings are secured internationally by copy-right law. Infringements will be sued by civil and legal law.

This technical sheet's contents are all subject to update and modification at MT Displays' exclusive discretion. There is nothing official about this document. For final and legally binding information, please get in touch with the sales staff at MT Displays.



T: +90 850 433 67 85 / info@mtdisplays.com / www.mtdisplays.com