

SMART LEDBOX 35 MM DOUBLE SIDED



LONG LASTING AD SIGNS WITH HOMOGENOUS ILLUMINATION

The specially treated acrylic in the middle provides a homogenous lighting. Double Sided Smart Ledboxes are 39 mm in thickness. The article disposes of a built-in on/off switch. These LED light panels are an ideal choice for a wide range of indoor applications. Max. poster size available is 1016x1600 mm. Improved laser treatment over acrylic to increase lighting efficiency.

KEY SELECTION ATTRIBUTES

- * Double-sided, ceiling hanging, edge-lit lightbox with easy and slim snap open frame and long lasting LED technology bulbs.
- * One of the thinnest double-sided lightboxes in the market with 39mm depth.
- * Suitable for A0, A1, B0, B1, 30"X40", 40"X60" size posters in portrait and landscape position.
- * Suitable for INDOOR applications for high-traffic areas, because it doesn't obstruct walking paths.
- * High illumination is achieved by specially treated acrylic and provides homogenous illumination. It offers evenly diffused lux in all sizes.
- * LED bulbs are not seen from outside, since they are embedded in sides of the frame.
- * Translucent poster material should be used for printing the signage.
- * Gives an impressive effect to grab the passers-by.
- * LED illumination saves up to 60% energy costs, compared to fluorescent technology.
- * Supplied with quality certificates and CE/UL PAT test reports passed.
- * Natural silver-anodized in standard and various RAL colors available with antimicrobial powder coating.
- * One set includes a double-sided 35mm snap open frame with 39mm depth and embedded LED bulbs; specially treated acrylic non-glare PET lenses to diffuse light across graphics; 2 anti-reflex PET poster covers; a standard hanging kit composed of 2 pieces of 2 meters long wire cables and 2 ceiling hangers; 1 power adapter with 2,5 meter long cable and 1 EU Plug. UK and US plugs are available, should be specified with order.
- * Optional dimmer is available. Adjusting the light from dark to max lux of LED illuminated frame. Simply jack the dimmer in frame and then into power supply.
- * Easy to load and re-load posters, with easy snap open framing. Simply snap up all four sides of the frame and easily insert your poster or take out.
- * The lightweight SMART LED BOX with slim profile design and low voltage requirements allow mounting at any given point with access to a regular electrical outlet. The unique frame extrusion offers a wide range of mounting or hanging options.
- * Packed unassembled with an easy mounting instruction sheet & fixing set
- * The built-in on /off switch and outer power supply helps long product life.
- * For using LED frame 24 hours in 7 days, please ask for special 7/24 power supplies.
- * Keep out of the direct rays of sun. Keep away from fire or severe hot place. Acceptable ambient temperature is max. 35°C.



COLOURS IN STOCK



Silver

COLOUR OPTIONS

Black Anodised

Silver Anodised

Black - RAL 9005

White - RAL 9003

Red - RAL 3020

Blue - RAL 5002

Green - RAL 6029

Yellow - RAL 1021

CORNER TYPES

Mitred corner

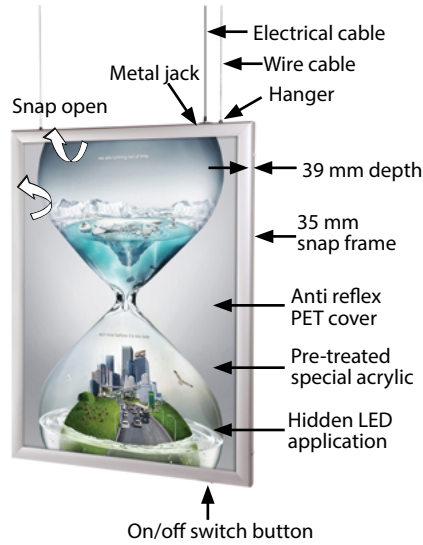
SUITABLE FOR

Smart LED Box Double Sided can be used for a wide range of INDOOR applications, for signage needs in many locations like retail point-of-purchase, tradeshow displays, movie theatres, sports facilities, shopping malls, markets, groceries, hotels, airports, shops and stores, hospitals, restaurants, halls, meeting rooms, gas stations, casinos, and more.

FEATURES

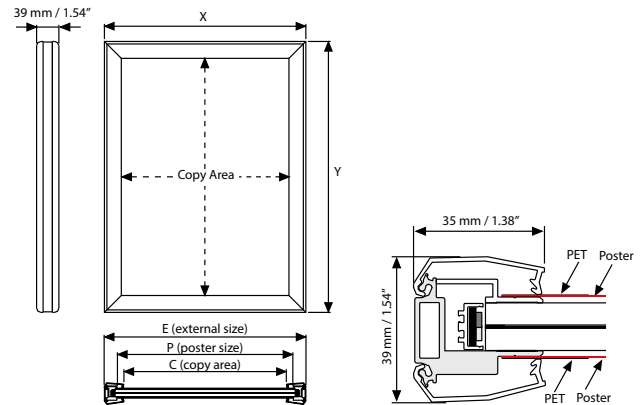


EXPLODED VIEW



Standard hanging kit for all sizes: 2 meters x 2 pcs wire cable and 2 ceiling hangers.

TECHNICAL DRAWING



ARTICLES

ARTICLE	EXTERNAL (x-y)	POSTER	COPY	LIGHTING	WEIGHT	PACKING SIZE
					WITH PACKING	*W X H X D
ULD35CN0A1	641 X 888 mm	594 X 841 mm	571 X 818 mm	2100-2400 LUX	15,100 kg	720 X 1010 X 60 mm
ULD35CN0A0	888 X 1236 mm	841 X 1189 mm	818 X 1166 mm	1800-2100 LUX	20,750 kg	965 X 1380 X 60 mm
ULD35CN0B1	747 X 1047 mm	700 X 1000 mm	677 X 977 mm	2000-2300 LUX	17,340 kg	815 X 1170 X 60 mm
ULD35CN0B0	1047 X 1447 mm	1000 X 1400 mm	977 X 1377 mm	1500-1800 LUX	27,000 kg	1120 X 1570 X 60 mm
ULD35CN034	31.85" X 41.85"	30" X 40"	29.09" X 39.09"	2000-2300 LUX	33.069 lbs	35.83" X 46.46" X 2.76"
ULD35CN036	37.87" X 49.88"	36" X 48"	35.12" X 47.13"	2000-2300 LUX	41.909 lbs	40.16" X 55.91" X 2.76"
ULD35CN046	41.85" X 61.85"	40" X 60"	39.09" X 59.09"	1500-1800 LUX	63.603 lbs	46.06" X 66.93" X 2.76"

OPTIONAL ACCESSORIES



Optional dimmer to go with LED illuminated frame.. Simply jack the dimmer in frame and then into powersupply. It adjust the light from dark to max lux of LED illuminated frame. / UYUP445550



T: +90 850 433 67 85 / info@mtdisplays.com / www.mtdisplays.com

PHYSICAL DATA

Material

35mm aluminium profile snap open frame with 39mm depth, PET anti-reflex poster cover, acrylic backing, LED bulbs.

Poster Material

Translucent poster material should be used for printing the signage.

Surface Finish

Natural silver-anodized in standard and various RAL colors available with antimicrobial powder coating. Call for custom color requests.

Recycled Content

Up to 78% recycled content used.

Warranty

All products are guaranteed for 2 years by MT Displays with below conditions:

[Warranty Conditions](#)

Cleaning and Disinfecting

Clean your displays, with damp microfiber clothes, rinsed with simply water or warm, soapy or gentle shampooed water. Avoid using vinegar, abrasive, acidic, alcohol-based or heavy cleaners or cleaners containing Ammonia. Only after cleaning the product, if needed, simply apply disinfectant or sanitizer that is in compliance with your local guidelines and regulations.

Storage Conditions

Goods should be stored at 0° to 25°C in a dry place. Store in the original package.

Installation Considerations

Smart LEDbox Double Sided is packed with an easy mounting instruction sheet & fixing set. Supplied with quality certificates and CE/UL PAT test reports passed. One set includes a double-sided 35mm snap open frame with 39mm depth and embedded LED bulbs; specially treated acrylic non-glare PET lenses to diffuse light across graphics; 2 anti-reflex PET poster covers; a standard hanging kit composed of 2 pieces of 2 meters long wire cables and 2 ceiling hangers; 1 power adapter with 2,5 meter long cable and 1 EU Plug. UK and US plugs are available, should be specified with order. The built-in on /off switch and outer power supply helps long product life. Optional dimmer is available, adjusting the light from dark to max lux of LED illuminated frame. For using LED frame 24 hours in 7 days, please ask for special 7/24 power supplies. Keep out of the direct rays of sun. Keep away from fire or severe hot place. Acceptable ambient temperature is max. 35°C.

Design Considerations

Double-sided, ceiling hanging, edge-lit lightbox with easy and slim snap open frame and long lasting LED technology bulbs. One of the thinnest double-sided lightboxes in the market with 39mm depth. Suitable for A0, A1, B0, B1, 30"X40", 40"X60" size posters in portrait and landscape position. Suitable for INDOOR applications for high-traffic areas, because it doesn't obstruct walking paths. High illumination is achieved by specially treated acrylic and provides homogenous illumination. It offers evenly diffused lux in all sizes. LED bulbs are not seen from outside, since they are embedded

in sides of the frame. Translucent poster material should be used for printing the signage. Gives an impressive effect to grab the passers-by. LED illumination saves up to 60% energy costs, compared to fluorescent technology. Easy to load and re-load posters, with easy snap open framing. Simply snap up all four sides of the frame and easily insert your poster or take out. Suitable for silk screen printing, max. letter height is 20 mm.

PRINT TEMPLATES

Smart LEDbox 35 mm Double Sided - A1

Document Size: 604 x 851 mm (Includes Bleeds)

Finished Size: A1 (594 x 841 mm) [Print](#)

Smart LEDbox 35 mm Double Sided - A0

Document Size: 851 x 1199 mm (Includes Bleeds)

Finished Size: A0 (841 x 1189 mm) [Print](#)

Smart LEDbox 35 mm Double Sided- B2

Document Size: 510 x 710 mm (Includes Bleeds)

Finished Size: B2 (500 x 700 mm) [Print](#)

Smart LEDbox 35 mm Double Sided- B1

Document Size: 710 x 1010 mm (Includes Bleeds)

Finished Size: B1 (700 x 1000 mm) [Print](#)

Smart LEDbox 35 mm Double Sided - 30"x40"

Document Size: 30.4" x 40.4" (Includes Bleeds)

Finished Size: 30"x40" (762x1016 mm) [Print](#)

Smart LEDbox 35 mm Double Sided - 40"x60"

Document Size: 40.4" x 60.4" (Includes Bleeds)

Finished Size: 40"x60" (1016x1524 mm) [Print](#)



ILLUMINATED PRODUCTS TECHNICAL MANUAL

» DIMMER

Optional dimmer to go with LED illuminated frame. Simply jack the dimmer in frame and then into power supply. It adjusts the light from dark to max lux of LED illuminated frame.
Dimming: %10-%100, on/off



» POWER SUPPLY

- 12 V DC
- Complete with Power supply
- 2 year guaranteed
- 7/16 use
- If 7/24 use required, please order individually.

» CABLE

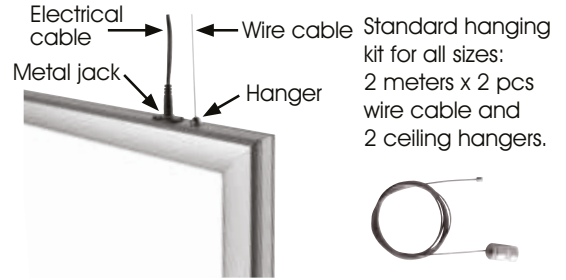
Delivered with 2,5 meter long cable and EU plug.
UK, US or CH plugs should be specified with order.
Extension cable: 1 mm, 2 mm, 3 mm.



» TECHNICAL SPECIFICATION

ARTICLE	POSTER	ACRYLIC THICKNESS	ILLUMINATION	POWER CONSUMPTION	POWER SUPPLY RECOMMENDED
ULD35CNOA1	594 X 841 mm	6+6 mm	2100-2400 LUX	52 W / 4.33 A	6 A
ULD35CNOA0	841 X 1189 mm	6+6 mm	1800-2100 LUX	72 W / 6 A	9 A
ULD35CNOB1	700 X 1000 mm	6+6 mm	2000-2300 LUX	61 W / 5 A	6 A
ULD35CNOB0	1000 X 1400 mm	6+6 mm	1500-1800 LUX	87 W / 7.16 A	9 A
ULD35CNO34	762 X 1016 mm	6+6 mm	2000-2300 LUX	62 W / 5 A	6 A
ULD35CNO46	1016 X 1524 mm	6+6 mm	1500-1800 LUX	94 W / 7.5 A	9 A

» HANGER



Standard hanging kit for all sizes:
2 meters x 2 pcs wire cable and 2 ceiling hangers.

» FEATURES

- Improved Led technology for improved luminance.
- Pre-treated light guided panel diffuses light even & powerful.
- Saves up to 60% energy costs.
- CE certificate provided.
- The lightweight SMART LED BOX with slim profile design and low voltage requirements allow mounting at any given point with access to a regular electrical outlet. The unique frame extrusion offers a wide range of mounting or hanging options.

» LED FEATURES (Duris E5)

Viewing angle at 50 % IV: 120°

Color: 2700 K - 6500 K (white)

CRI: Min. 80 (typ. 85)

Luminous Flux: Typ. 56 lm @ 5000 K

Luminous efficacy: Typ. 156 lm/W @ 5000 K

Luminous efficacy @ 65m A: Typ. 170 lm/W @ 5000 K

Lumen Maintenance: Testing according to IESNA LM-80 in progress

Life Time : 50.000 Hours

Colour: 5700 K -6500 K (White)*

*For special inquired colour is available in 2700 K -6500 K

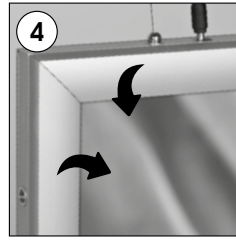
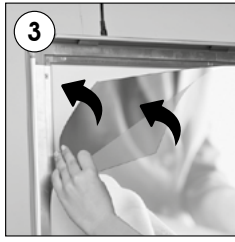
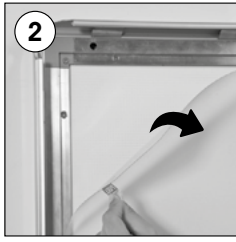
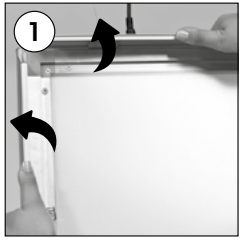


» ASSEMBLY SHEET

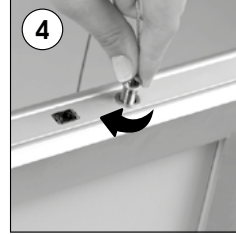
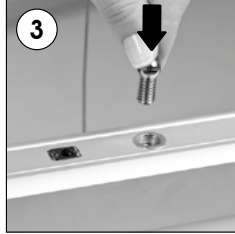
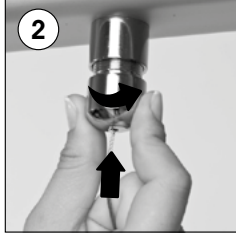
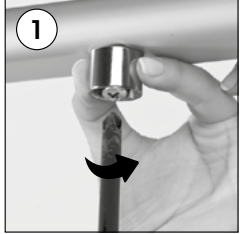


INSTALLATION INSTRUCTIONS

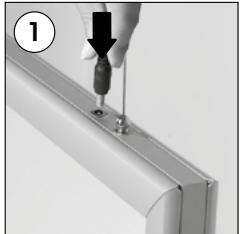
Smart LEDbox 35 mm Double Sided / 1007013



Hanger mounting



Power Supply usage



Caution!
Fragile switch!
Remove pads when
fully installed

NOTE / ANMERKUNG / NOT

- Please note that all suspension accessories are optional, not included in the standard items.
- Alle Hängesets sind extra zu bestellen. Auch bei Standartprodukten werden diese nicht mitgeliefert.
- Askı aparatları opsiyoneldir, standart üründe bulunmamaktadır.

Caution !

- 1- Do not step on the light panel nor place the heavy object on the light panel.
- 2- Do not pull the cable with excessive force.
- 3- Use correct capacity and voltage of D.C. power supply.
Failure to observe this instruction could result in breakdown.
- 4- Do not touch the light panel or electrical devices with wet hand.
Failure to observe this instruction could result in electrical shocks and severe injuries.
- 5- Do not subject this light panel to outdoor, high humid and vaporized area.
Failure to observe this instruction could result in breakdown.
- 6- Keep this out of the direct rays of the sun.
Failure to observe this instruction could result in color changes of acrylic plate.
- 7- Keep away from fire or severe hot place. Acceptable ambient temperature is max.35°C
Failure to observe this instruction could result in shorten the life time and degradation of brightness of LED light source.

- Please inform the order number on the product or on the carton (e.g. 1/110001394-460) to the place that you have made the purchase if any problem with the product occurs.
- All rights reserved. All pictures, figures and writings are secured internationally by copy-right law. Infringements will be sued by civil and legal law.



This technical sheet's contents are all subject to update and modification at MT Displays' exclusive discretion. There is nothing official about this document. For final and legally binding information, please get in touch with the sales staff at MT Displays.



T: +90 850 433 67 85 / info@mtdisplays.com / www.mtdisplays.com