

SMART LEDBOX 25 MM SINGLE SIDED



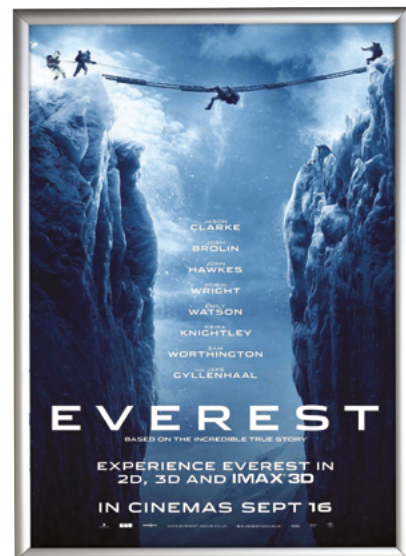
LONG LASTING AD SIGNS WITH HOMOGENOUS ILLUMINATION

Very slim single sided Smart LEDbox with 19mm thickness is an ideal choice for wide range of indoor applications. High illumination is achieved by specially treated acrylic and provides a homogenous illumination. The built-in on/off button and outer power supply help long product life. Homogenous and brilliant Smart LEDbox will get the attention of consumers easily wherever it is mounted.

KEY SELECTION ATTRIBUTES

- * Single-sided, wall hanging, edge-lit lightbox with easy and slim snap open frame and long lasting LED technology bulbs.
- * One of the thinnest lightboxes in the market with 19mm depth.
- * Suitable for A0, A1, A2, A3, A4, B1, B2, 11"x17", 20"x30", 30"x40" size posters in portrait and landscape position.
- * Suitable for INDOOR applications for high-traffic areas, because it doesn't obstruct walking paths.
- * High illumination is achieved by specially treated acrylic and provides homogenous illumination. It offers evenly diffused lux in all sizes.
- * LED bulbs are not seen from outside, since they are embedded in sides of the frame.
- * Translucent poster material should be used for printing the signage.
- * Gives an impressive effect to grab the passers-by.
- * LED illumination saves up to 60% energy costs, compared to fluorescent technology.
- * Supplied with quality certificates and CE/UL PAT test reports passed.
- * Natural silver-anodized in standard and various RAL colors available with antimicrobial powder coating.
- * One set includes a single sided 25mm snap open frame with 19mm depth and embedded LED bulbs, specially treated

- acrylic non-glare PET lens to diffuse light across graphics, 1 anti-reflex PET poster cover, 2 wall hangers, 4 screws, 4 anchors, 1 power adapter (12V-2A), 2,5 meter long cable and 1 EU Plug. UK and US plugs are available, should be specified with order.
- * Moving hangers let the mounting in portrait and landscape position.
- * Optional dimmer is available. Adjusting the light from dark to max lux of LED illuminated frame.
- * Easy to load and re-load posters, with easy snap open framing. Simply snap up all four sides of the frame and easily insert your poster or take out.
- * The lightweight SMART LED BOX with slim profile design and low voltage requirements allow mounting at any given point with access to a regular electrical outlet. The unique frame extrusion offers a wide range of mounting or hanging options.
- * Packed unassembled with an easy mounting instruction sheet & fixing set
- * The built-in on /off switch and outer power supply helps long product life.
- * For using LED frame 24 hours in 7 days, please ask for special 7/24 power supplies.
- * Keep out of the direct rays of sun. Keep away from fire or severe hot place. Acceptable ambient temperature is max. 35°C.

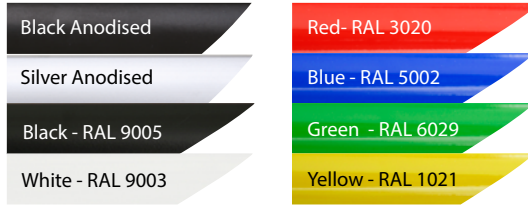


COLOURS IN STOCK

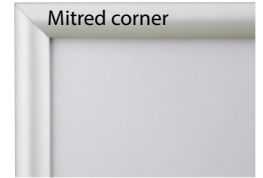


Silver

COLOUR OPTIONS



CORNER TYPES



WATCH VIDEO



Watch video at our website
www.mtdisplays.com

SUITABLE FOR

Smart LEDbox Single Sided can be used for a wide range of INDOOR applications, for signage needs in many locations like retail point-of-purchase, tradeshow displays, movie theatres, sports facilities, shopping malls, markets, groceries, hotels, airports, shops and stores, hospitals, restaurants, halls, meeting rooms, gas stations, casinos, and more.

FEATURES

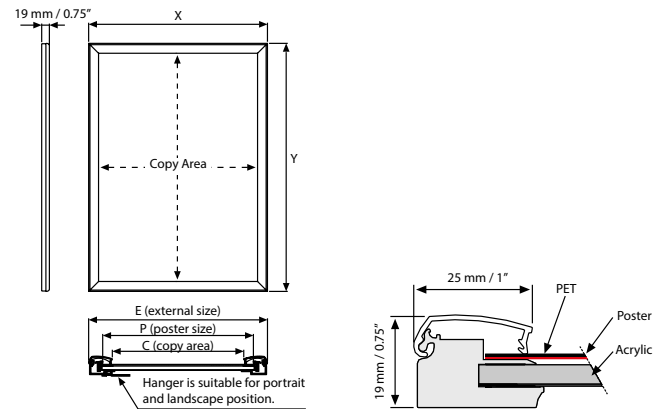


EXPLODED VIEW



2 wall hangers are standard in each product. Moving hangers let the mounting in portrait and landscape position.

TECHNICAL DRAWING



ARTICLES

ARTICLE	EXTERNAL (x-y)	POSTER	COPY	LIGHTING	WEIGHT	PACKING SIZE
					WITH PACKING	*W X H X D
ULD25TN0A4	242 X 329 mm	210 X 297 mm	190 X 277 mm	1700-2000 LUX	1,100 kg	260 X 420 X 46 mm
ULD25TN0A3	329 X 452 mm	297 X 420 mm	277 X 400 mm	3300-3600 LUX	1,820 kg	350 X 540 X 46 mm
ULD25TN0A2	452 X 626 mm	420 X 594 mm	400 X 574 mm	3000-3300 LUX	2,960 kg	470 X 720 X 46 mm
ULD25TN0A1	626 X 873 mm	594 X 841 mm	574 X 821 mm	2700-3000 LUX	6,530 kg	650 X 960 X 46 mm
ULD25TN0A0	873 X 1221 mm	841 X 1189 mm	821 X 1169 mm	2500-2800 LUX	10,280 kg	890 X 1290 X 46 mm
ULD25TN0B2	532 X 732 mm	500 X 700 mm	480 X 680 mm	2900-3200 LUX	4,850 kg	560 X 820 X 46 mm
ULD25TN0B1	732 X 1032 mm	700 X 1000 mm	680 X 980 mm	2500-2800 LUX	8,710 kg	780 X 1100 X 46 mm
ULD25TN017	12.28" X 18.27"	11" X 17"	10.24" X 16.22"	2200-2500 LUX	11.265 lbs	13.19" X 20.87" X 1.81"
ULD25TN018	19.29" X 25.28"	18" X 24"	17.24" X 23.23"	2300-2500 LUX	7.936 lbs	19.88" X 27.95" X 1.81"
ULD25TN023	21.26" X 31.26"	20" X 30"	18.88" X 27.95"	2900-3200 LUX	5,130 kg	570 X 870 X 46 mm
ULD25TN022	23.27" X 29.29"	22" X 28"	21.22" X 27.24"	2400-2700 LUX	9,920 lbs	23.62" X 35.43" X 1.81"
ULD25TN024	25.28" X 37.28"	24" X 36"	23.23" X 35.24"	2500-2900 LUX	15,652 lbs	26.18" X 40.16" X 1.81"
ULD25TN034	31.26" X 41.26"	30" X 40"	29.21" X 39.21"	2300-2800 LUX	20,392 lbs	31.89" X 43.90" X 1.81"

OPTIONAL ACCESSORIES



Optional dimmer to go with LED illuminated frame.. Simply jack the dimmer in frame and then into powersupply. It adjust the light from dark to max lux of LED illuminated frame. / UYUP445550



T: +90 850 433 67 85 / info@mtdisplays.com / www.mtdisplays.com

PHYSICAL DATA

Material

25mm aluminium profile snap open frame with 19 mm depth, PET anti-reflex poster cover, acrylic backing, LED bulbs.

Poster Material

Translucent poster material should be used for printing the signage.

Surface Finish

Natural silver-anodized in standard and various RAL colors available with antimicrobial powder coating. Call for custom color requests.

Recycled Content

Up to 99% recycled content used.

Warranty

All products are guaranteed for 2 years by MT Displays with below conditions:

[Warranty Conditions](#)

Storage Conditions

Goods should be stored at 0° to 25°C in a dry place. Store in the original package.

Installation Considerations

Smart LEDbox Single Sided is packed with an easy mounting instruction sheet & fixing set. Supplied with quality certificates and CE/UL PAT test reports passed. One set includes a single sided 25mm snap

open frame with 19mm depth and embedded LED bulbs, specially treated acrylic non-glare PET lens to diffuse light across graphics, 1 anti-reflex PET poster cover, 2 wall hangers, 4 screws, 4 anchors, 1 power adapter (12V-2A), 2,5 meter long cable and 1 EU Plug. UK and US plugs are available, should be specified with order. The built-in on/off switch and outer power supply helps long product life. Moving hangers let the mounting in portrait and landscape position. Optional dimmer is available, adjusting the light from dark to max lux of LED illuminated frame. For using LED frame 24 hours in 7 days, please ask for special 7/24 power supplies. Keep out of the direct rays of sun. Keep away from fire or severe hot place. Acceptable ambient temperature is max. 35°C.

Design Considerations

Single-sided, wall hanging, edge-lit lightbox with easy and slim snap open frame and long lasting LED technology bulbs. One of the thinnest lightboxes in the market with 19mm depth. Suitable for A0, A1, A2, A3, A4, B1, B2, 11"x17", 20"x30", 30"x40" size posters in portrait and landscape position. Suitable for INDOOR applications for high-traffic areas, because it doesn't obstruct walking paths. High illumination is achieved by specially treated acrylic and provides homogenous illumination. It offers evenly diffused lux in all sizes. LED bulbs are not seen from outside, since they are embedded in sides of the

frame. Translucent poster material should be used for printing the signage. Gives an impressive effect to grab the passers-by. LED illumination saves up to 60% energy costs, compared to fluorescent technology. Easy to load and re-load posters, with easy snap open framing. Simply snap up all four sides of the frame and easily insert your poster or take out. Suitable for silk screen printing, max. letter height is 15 mm.

Cleaning and Disinfecting

Clean your displays, with damp microfiber clothes, rinsed with simply water or warm, soapy or gentle shampooed water. Avoid using vinegar, abrasive, acidic, alcohol-based or heavy cleaners or cleaners containing Ammonia. Only after cleaning the product, if needed, simply apply disinfectant or sanitizer that is in compliance with your local guidelines and regulations.

PRINT TEMPLATES

Smart LEDbox 25 mm Single Sided - A4

Document Size: 220 x 307 mm (Includes Bleeds)

Finished Size: A4 (210 x 297 mm) [Print](#)

Smart LEDbox 25 mm Single Sided - A3

Document Size: 307 x 430 mm (Includes Bleeds)

Finished Size: A3 (297 x 420 mm) [Print](#)

Smart LEDbox 25 mm Single Sided - A2

Document Size: 430 x 604 mm (Includes Bleeds)

Finished Size: A2 (420 x 594 mm) [Print](#)

Smart LEDbox 25 mm Single Sided - A1

Document Size: 604 x 851 mm (Includes Bleeds)

Finished Size: A1 (594 x 841 mm) [Print](#)

Smart LEDbox 25 mm Single Sided - A0

Document Size: 851 x 1199 mm (Includes Bleeds)

Finished Size: A0 (841 x 1189 mm) [Print](#)

Smart LEDbox 25 mm Single Sided - B2

Document Size: 510 x 710 mm (Includes Bleeds)

Finished Size: B2 (500 x 700 mm) [Print](#)

Smart LEDbox 25 mm Single Sided - B1

Document Size: 710 x 1010 mm (Includes Bleeds)

Finished Size: B1 (700 x 1000 mm) [Print](#)

Smart LEDbox 25 mm Single Sided - 11"x17"

Document Size: 11.4" x 17.4" (Includes Bleeds)

Finished Size: 11"x17" (279.4x431.8 mm)

Smart LEDbox 25 mm Single Sided - 18"x24"

Document Size: 18.4" x 24.4" (Includes Bleeds)

Finished Size: 18"x24" (457.2 x609.6 mm)

Smart LEDbox 25 mm Single Sided - 20"x30"

Document Size: 20.4" x 30.4" (Includes Bleeds)

Finished Size: 20"x30" (508 x762 mm) [Print](#)

Smart LEDbox 25 mm Single Sided - 22"x28"

Document Size: 22.4" x 28.4" (Includes Bleeds)

Finished Size: 22"x28" (558.8x711.1 mm)

Smart LEDbox 25 mm Single Sided - 24"x36"

Document Size: 24.4" x 36.4" (Includes Bleeds)

Finished Size: 24"x36" (609.6x914.4 mm)

Smart LEDbox 25 mm Single Sided - 30"x40"

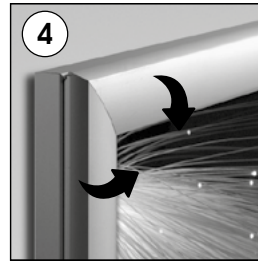
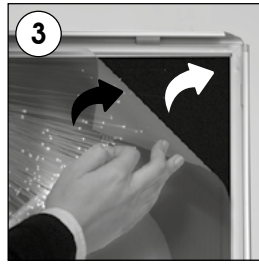
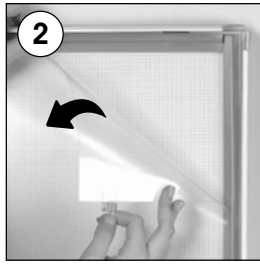
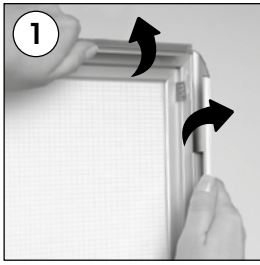
Document Size: 30.4" x 40.4" (Includes Bleeds)

Finished Size: 30"x40" (762x1016 mm)

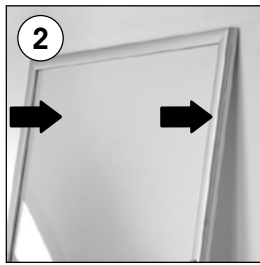
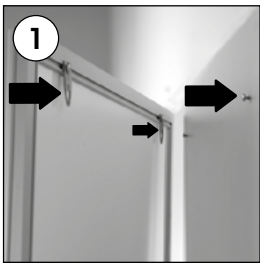


INSTALLATION INSTRUCTIONS

Smart LEDbox Single Sided / 1004724

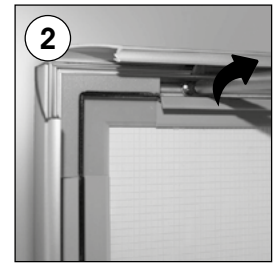
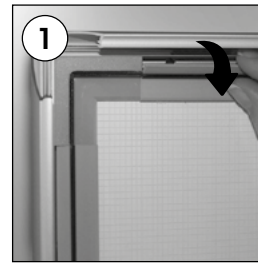


Hanger mounting



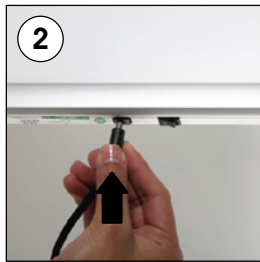
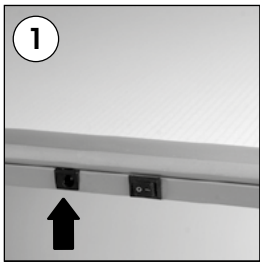
2 wall hangers are standard in each product. Moving hangers let the mounting in portrait and landscape position.

Screw & anchor mounting



Each frame includes wall mounting accessories (4 screws & 4 anchors)

Power Supply usage



Caution!
Fragile switch!
Remove pads when fully installed



Caution !

- 1- Do not step on the light panel nor place the heavy object on the light panel.
- 2- Do not pull the cable with excessive force.
- 3- Use correct capacity and voltage of D.C. power supply.
Failure to observe this instruction could result in breakdown.
- 4- Do not touch the light panel or electrical devices with wet hand.
Failure to observe this instruction could result in electrical shocks and severe injuries.
- 5- Do not subject this light panel to outdoor, high humid and vaporized area.
Failure to observe this instruction could result in breakdown.
- 6- Keep this out of the direct rays of the sun.
Failure to observe this instruction could result in color changes of acrylic plate.
- 7- Keep away from fire or severe hot place. Acceptable ambient temperature is max.35°C
Failure to observe this instruction could result in shorten the life time and degradation of brightness of LED light source.

- Please inform the order number on the product or on the carton (e.g. 1/110001394-460) to the place that you have made the purchase if any problem with the product occurs.
- All rights reserved. All pictures, figures and writings are secured internationally by copy-right law. Infringements will be sued by civil and legal law.

