

ACRYLED FOR WALL MOUNTING



LONG LASTING AND LESS EXPENSIVE THAN CONVENTIONAL

The specially treated acrylic in the middle provides a homogenous lighting. Single Sided Smart Ledboxes are 29 mm in thickness. The article disposes of a built-in on/off switch. These LED light panels are an ideal choice for a wide range of indoor applications. Max. poster size available is 1200x2415 mm. Improved laser treatment to increase lighting efficiency.

KEY SELECTION ATTRIBUTES

- Improved surface laser treatment for improved luminance
- CE listed electrical components.
- Offers evenly diffused lux in all sizes.
- Saves up to 60% energy costs.



COLOURS IN STOCK



Silver

COLOUR OPTIONS

Black Anodised

Silver Anodised

Black - RAL 9005

White - RAL 9003

Red- RAL 3020

Blue - RAL 5002

Green - RAL 6029

Yellow - RAL 1021

CORNER TYPES

Mitred corner

WATCH VIDEO



Watch video at our website
www.mtdisplays.com

SUITABLE FOR

Infoboard can be used for INDOOR applications, for signage needs in many locations like shopping centers, markets, groceries, hotels, offices airports, shops and stores, hospitals, schools, apartments, restaurants, halls, meeting rooms, gas stations and many more.

FEATURES

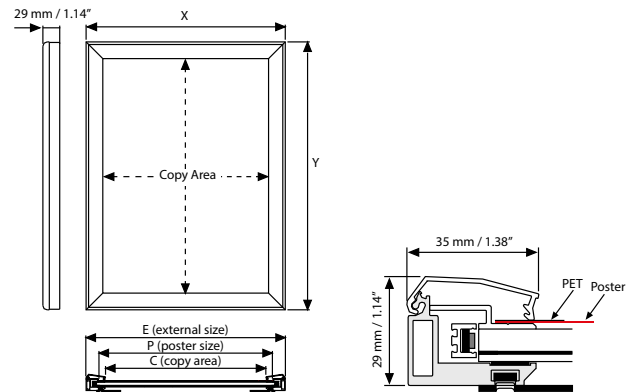


EXPLODED VIEW



2 wall hangers are standard in each product. Moving hangers let the mounting in portrait and landscape position.

TECHNICAL DRAWING



ARTICLES

ARTICLE	EXTERNAL (x-y)	POSTER	COPY	LIGHTING	WEIGHT	PACKING SIZE
					WITH PACKING	*W X H X D
ULD35TN0A4	257 X 344 mm	210 X 297 mm	187 X 274 mm	4200-4500 LUX	2,910 kg	320 X 510 X 70 mm
ULD35TN0A3	344 X 467 mm	297 X 420 mm	274 X 397 mm	3900-4200 LUX	3,560 kg	410 X 630 X 70 mm
ULD35TN0A2	467 X 641 mm	420 X 594 mm	397 X 571 mm	3500-3900 LUX	5,505 kg	530 X 810 X 70 mm
ULD35TN0A1	641 X 888 mm	594 X 841 mm	571 X 818 mm	3000-3300LUX	9,285 kg	710 X 1060 X 70 mm
ULD35TN0A0	888 X 1236 mm	841 X 1189 mm	818 X 1166 mm	2500-2800 LUX	16,080 kg	960 X 1400 X 70 mm
ULD35TN0B2	547 X 747 mm	500 X 700 mm	477 X 677 mm	3000-3300 LUX	6,928 kg	710 X 910 X 70 mm
ULD35TN0B1	747 X 1047 mm	700 X 1000 mm	677 X 977 mm	2600-2900 LUX	12,065 kg	810 X 1210 X 70 mm
ULD35TN0B0	1047 X 1447 mm	1000 X 1400 mm	977 X 1377 mm	2000-2300 LUX	23,195 kg	1110 X 1610 X 70 mm
ULD35TN023	21.85" X 31.85"	20" X 30"	19.09" X 29.09"	3000-3300 LUX	7,965 kg	620 X 970 X 70 mm
ULD35TN034	31.85" X 41.85"	30" X 40"	29.09" X 39.09"	2600-2900 LUX	30,137 lbs	34.25" X 48.03" X 2.76"
ULD35TN036	37.87" X 49.88"	36" X 48"	35.12" X 47.13"	2000-2200 LUX	37,037 lbs	40.16" X 55.91" X 2.76"
ULD35TN046	41.85" X 61.85"	40" X 60"	39.09" X 59.09"	2000-2300 LUX	58,069 lbs	44.09" X 68.50" X 2.76"

OPTIONAL ACCESSORIES



Optional dimmer to go with LED illuminated frame.. Simply jack the dimmer in frame and then into powersupply. It adjust the light from dark to max lux of LED illuminated frame.
UYUP445550



T: +90 850 433 67 85 / info@mtdisplays.com / www.mtdisplays.com

PHYSICAL DATA

Material

35 mm aluminum profiles.
PET poster cover, PS backing or ABS backing.

Poster Material & Thickness

0,10 – 0,20 mm for standard product. Max poster thickness 3 mm. Any non-standard poster thicknesses should be indicated with order.

Surface Finish

Silver anodized or black colour, antimicrobial powder coating. Custom colors also available, call for custom color requests.

Recycled Content

Up to 78% recycled content used.

Warranty

All products are guaranteed for 3 years by MT Displays with below conditions:
[Warranty Conditions](#)

Installation Considerations

All units pass CE/UL PAT tests and are supplied with their quality certificates. Delivered with 2,5 meter long cable and EU plug. UK and US plugs should be specified with order. LED illumination saves up to 60% energy costs (compared to fluorescent technology). The lightweight SMART LED BOX with slim profile design and low voltage requirements allow mounting at any given point with access to a regular electrical outlet. The unique frame extrusion offers a wide range of mounting or hanging options. 35°C Indoor maximum temperature (incl. daily sunny hours.) It should be assembled 30 cm from the window.

Design Considerations

Suitable for silk screen printing, max. letter height is 20 mm.

Cleaning and Disinfecting

Clean your displays, with damp microfiber clothes, rinsed with simply water or warm, soapy or gentle shampooed water. Avoid using vinegar, abrasive, acidic, alcohol-based or heavy cleaners or cleaners containing Ammonia. Only after cleaning the product, if needed, simply apply disinfectant or sanitizer that is in compliance with your local guidelines and regulations.

PRINT TEMPLATES

Smart LEDbox 35 mm Single Sided - A4

Document Size: 220 x 307 mm (Includes Bleeds)
Finished Size: A4 (210 x 297 mm) [Print](#)

Smart LEDbox 25 mm Single Sided - A3

Document Size: 307 x 430 mm (Includes Bleeds)
Finished Size: A3 (297 x 420 mm) [Print](#)

Smart LEDbox 25 mm Single Sided - A2

Document Size: 430 x 604 mm (Includes Bleeds)
Finished Size: A2 (420 x 594 mm) [Print](#)

Smart LEDbox 25 mm Single Sided - A1

Document Size: 604 x 851 mm (Includes Bleeds)
Finished Size: A1 (594 x 841 mm) [Print](#)

Smart LEDbox 25 mm Single Sided - A0

Document Size: 851 x 1199 mm (Includes Bleeds)
Finished Size: A0 (841 x 1189 mm) [Print](#)

Smart LEDbox 25 mm Single Sided - B2

Document Size: 510 x 710 mm (Includes Bleeds)
Finished Size: B2 (500 x 700 mm) [Print](#)

Smart LEDbox 25 mm Single Sided - B1

Document Size: 710 x 1010 mm (Includes Bleeds)
Finished Size: B1 (700 x 1000 mm) [Print](#)

Smart LEDbox 25 mm Single Sided - B0

Document Size: 1010 x 1410 mm (Includes Bleeds)
Finished Size: B0 (1000 x 1400 mm) [Print](#)

Smart LEDbox 25 mm Single Sided - 20"x30"

Document Size: 20.4" x 30.4" (Includes Bleeds)
Finished Size: 20"x30" (508 x 762 mm) [Print](#)

Smart LEDbox 25 mm Single Sided - 30"x40"

Document Size: 30.4" x 40.4" (Includes Bleeds)
Finished Size: 30"x40" (762x1016 mm) [Print](#)

Smart LEDbox 35 mm Double Sided - 36"x48"

Document Size: 36.4" x 48.4" (Includes Bleeds)
Finished Size: 36"x48" (914.4x1219 mm) [Print](#)

Smart LEDbox 35 mm Double Sided - 40"x60"

Document Size: 40.4" x 60.4" (Includes Bleeds)
Finished Size: 40"x60" (1016x1524 mm) [Print](#)



ILLUMINATED PRODUCTS TECHNICAL MANUAL

» DIMMER

Optional dimmer to go with LED illuminated frame. Simply jack the dimmer in frame and then into power supply. It adjusts the light from dark to max lux of LED illuminated frame.
Dimming: %10-%100, on/off



» POWER SUPPLY

- 12 V DC
- Complete with Power supply
- 2 year guaranteed
- 7/16 use
- If 7/24 use required, please order individually.

» CABLE

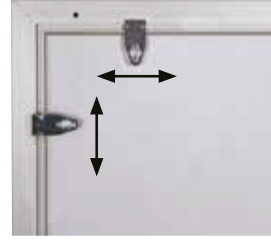
Delivered with 2,5 meter long cable and EU plug.
UK, US or CH plugs should be specified with order.
Extension cable: 1 mm, 2 mm, 3 mm.



» TECHNICAL SPECIFICATION

ARTICLE	POSTER	ACRYLIC THICKNESS	ILLUMINATION	POWER CONSUMPTION	POWER SUPPLY RECOMMENDED
ULD35TNOA4	210 X 297 mm	6 mm	4200-4500 LUX	12 W / 1 A	1 A
ULD35TNOA3	297 X 420 mm	6 mm	3900-4200 LUX	18 W / 1.44 A	2 A
ULD35TNOA2	420 X 594 mm	6 mm	3500-3900 LUX	23 W / 1.91 A	3 A
ULD35TNOA1	594 X 841 mm	6 mm	3000-3300 LUX	35 W / 2.83 A	4 A
ULD35TNOA0	841 X 1189 mm	6 mm	2500-2800 LUX	48 W / 4 A	5 A
ULD35TNOB2	500 X 700 mm	6 mm	3000-3300 LUX	27 W / 2.24 A	3 A
ULD35TNOB1	700 X 1000 mm	6 mm	2600-2900 LUX	41 W / 3.33 A	4 A
ULD35TNOB0	1000 X 1400 mm	6 mm	2000-2300 LUX	58 W / 4.8 A	6 A
ULD35TNO23	508 X 762 mm	6 mm	3000-3300 LUX	31 W / 2.56 A	4 A
ULD35TNO34	762 X 1016 mm	6 mm	2600-2900 LUX	41 W / 3.36 A	4 A
ULD35TNO46	1016 X 1524 mm	6 mm	2000-2300 LUX	60 W / 5 A	6A

» HANGER



2 wall hangers are standard in each product. Moving hangers let the mounting in portrait and landscape position.

» FEATURES

- Improved Led technology for improved luminance.
- Pre-treated light guided panel diffuses light even & powerful.
- Saves up to 60% energy costs.
- CE certificate provided.
- The lightweight SMART LED BOX with slim profile design and low voltage requirements allow mounting at any given point with access to a regular electrical outlet. The unique frame extrusion offers a wide range of mounting or hanging options.

» LED FEATURES (Duris E5)

Viewing angle at 50 % IV: 120°

Color: 2700 K - 6500 K (white)

CRI: Min. 80 (typ. 85)

Luminous Flux: Typ. 56 lm @ 5000 K

Luminous efficacy: Typ. 156 lm/W @ 5000 K

Luminous efficacy @ 65m A: Typ. 170 lm/W @ 5000 K

Lumen Maintenance: Testing according to IESNA LM-80 in progress

Life Time : 50.000 Hours

Colour: 5700 K -6500 K (White)*

*For special inquired colour is available in 2700 K -6500 K

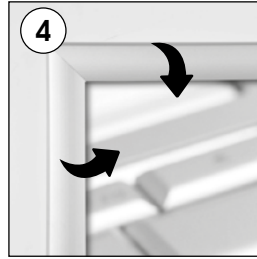
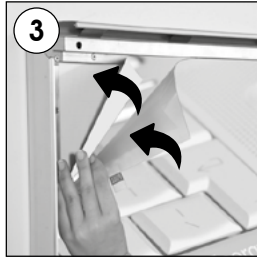
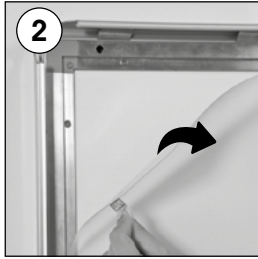
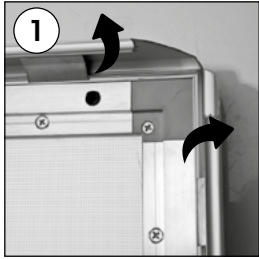


» ASSEMBLY SHEET



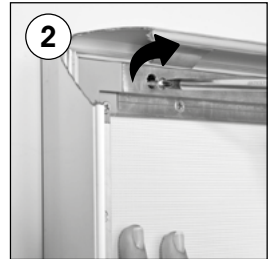
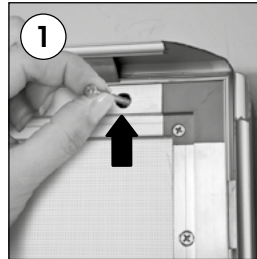
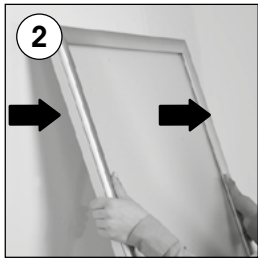
INSTALLATION INSTRUCTIONS

Smart LEDbox 35 mm Single Sided / 1007012



Hanger mounting

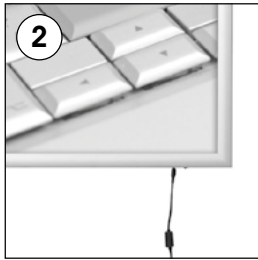
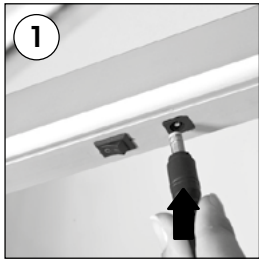
Screw & anchor mounting



2 wall hangers are standard in each product. Moving hangers let the mounting in portrait and landscape position.

Each frame includes wall mounting accessories (4 screws & 4 anchors)

Power Supply usage



Caution!
Fragile switch!
Remove pads when fully installed



Caution !

- 1- Do not step on the light panel nor place the heavy object on the light panel.
- 2- Do not pull the cable with excessive force.
- 3- Use correct capacity and voltage of D.C. power supply.
Failure to observe this instruction could result in breakdown.
- 4- Do not touch the light panel or electrical devices with wet hand.
Failure to observe this instruction could result in electrical shocks and severe injuries.
- 5- Do not subject this light panel to outdoor, high humid and vaporized area.
Failure to observe this instruction could result in breakdown.
- 6- Keep this out of the direct rays of the sun.
Failure to observe this instruction could result in color changes of acrylic plate.
- 7- Keep away from fire or severe hot place. Acceptable ambient temperature is max.35°C
Failure to observe this instruction could result in shorten the life time and degradation of brightness of LED light source.

This technical sheet's contents are all subject to update and modification at MT Displays' exclusive discretion. There is nothing official about this document. For final and legally binding information, please get in touch with the sales staff at MT Displays.



T: +90 850 433 67 85 / info@mtdisplays.com / www.mtdisplays.com