

## SNAP FRAME 15 MM



### “CLICK CLACK” QUICK POSTER FRAMES FOR DISPLAYING YOUR ADS

This quick clip metal sign frame is a wall mounted display that holds graphics between A5 – 20”-30” sizes and those graphics are safely protected by a clear non-glare lens against wear and tear. The lens also prevents reflection.

A poster frame like this with basic design can be great to highlight your promotions, photos, pictures, advertisements or deals. This metal sign frame has four hinged edges that open and close in a snap. Simply flip open the edges, insert your sign, and then snap shut.

### KEY SELECTION ATTRIBUTES

- \* Easy to mount, simple to carry.
- \* Ideal for various small-sized posters.
- \* Frame with a slim profile design and mitred corners.
- \* Natural silver-anodized and various RAL colors available with antimicrobial powder coating.
- \* High impact molded plastic backing.



- \* Anti-glare poster cover sheet.
- \* Standard with screws and anchors for wall hanging in landscape or portrait positions.
- \* Optional V-Hangers for easy wall mounting.
- \* Optional support for counter-top standing.
- \* Max length 120cm and max perimeter 350cm.

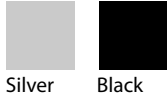


Silver Anodised, Mitred Corner



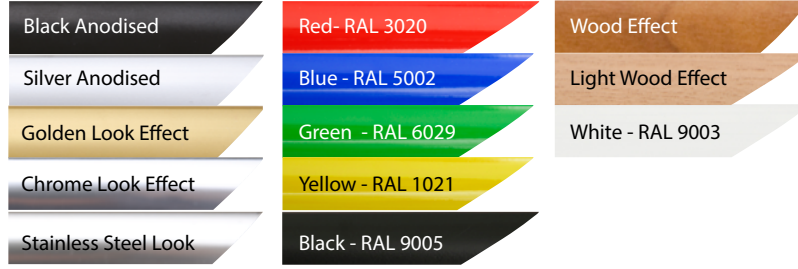
Black - RAL 9005, Mitred Corner

## COLOURS IN STOCK



Silver Black

## COLOUR OPTIONS

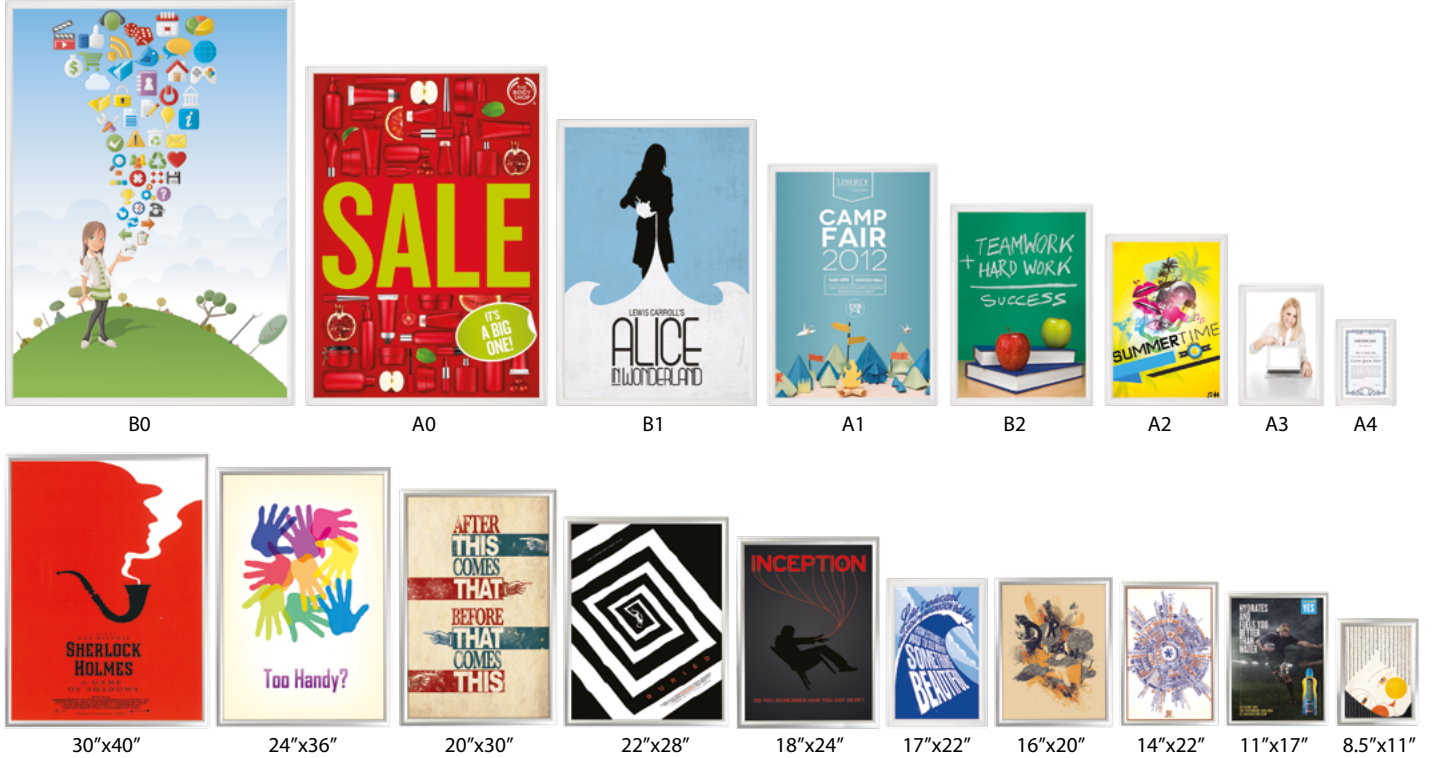


## CORNER TYPES



Mitred corner

## SNAP FRAME FAMILY



## SUITABLE FOR

Snap Frame can be used for INDOOR applications, for signage needs in many locations like shopping centers, markets, groceries, hotels, offices airports, shops and stores, hospitals, schools, apartments and many more.

## WATCH VIDEO

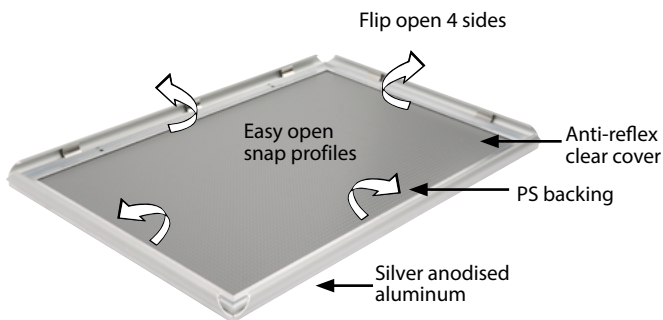


Watch video at our website [www.mtdisplays.com](http://www.mtdisplays.com)

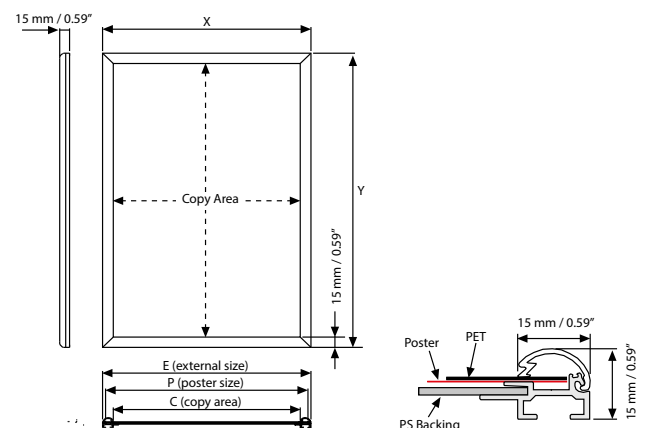
## FEATURES



## EXPLODED VIEW



## TECHNICAL DRAWING



T: +90 850 433 67 85 / [info@mtdisplays.com](mailto:info@mtdisplays.com) / [www.mtdisplays.com](http://www.mtdisplays.com)

## ARTICLES

ARTICLE	DESCRIPTION	EXTERNAL (x-y)	POSTER	COPY	WEIGHT	PACKING SIZE
					WITH PACKING	*W X H X D
UCN155NOA5	Silver	158 X 220 mm	148 X 210 mm	128 X 190 mm	0,320 kg	170 X 250 X 21 mm
UCN155NOA4	Silver	220 X 307 mm	210 X 297 mm	190 X 277 mm	0,450 kg	210 X 330 X 21 mm
UCN155NOA3	Silver	307 X 430 mm	297 X 420 mm	277 X 400 mm	0,700 kg	350 X 460 X 21 mm
UCN155NOA2	Silver	430 X 604 mm	420 X 594 mm	400 X 574 mm	1,100 kg	460 X 660 X 21 mm
UCN155NOA1	Silver	604 X 851 mm	594 X 841 mm	574 X 821 mm	2,080 kg	650 X 910 X 21 mm
UCN155NOB2	Silver	510 X 710 mm	500 X 700 mm	480 X 680 mm	1,800 kg	560 X 760 X 21 mm
UCN155NOB1	Silver	710 X 1010 mm	700 X 1000 mm	680 X 980 mm	3,400 kg	760 X 1060 X 21 mm
UCN155NOB1	Silver	8.90" X 11.38"	8.5" X 11"	7.72" X 10.20"	1.102 lbs	10.63" X 12.99" X 0.83"
UCN155NO17	Silver	11.38" X 17.40"	11" X 17"	10.20" X 16.22"	1.873 lbs	12.99" X 18.90" X 0.83"
UCN155NO14	Silver	14.41" X 22.40"	14" X 22"	13.23" X 21.22"	2.711 lbs	16.54" X 24.41" X 0.83"
UCN155NO16	Silver	16.42" X 20.39"	16" X 20"	15.24" X 19.21"	2.425 lbs	18.50" X 22.44" X 0.83"
UCN155NO12	Silver	17.40" X 22.40"	17" X 22"	16.22" X 21.22"	2.711 lbs	18.50" X 22.44" X 0.83"
UCN155NO18	Silver	18.43" X 24.41"	18" X 24"	17.24" X 23.23"	2.645 lbs	20.08" X 25.98" X 0.83"
UCN155NO23	Silver	20.39" X 30.39"	20" X 30"	19.21" X 29.21"	3.637 lbs	22.44" X 32.28" X 0.91"
UCN155B081	Black	8.90" X 11.38"	8.5" X 11"	7.72" X 10.20"	1.102 lbs	10.63" X 12.99" X 0.83"
UCN155B017	Black	11.38" X 17.40"	11" X 17"	10.20" X 16.22"	1.873 lbs	12.99" X 18.90" X 0.83"

## OPTIONAL ACCESSORIES



V Hanger / UYAA011010

## PHYSICAL DATA

### Material

15 mm aluminum profiles.  
PET poster cover, PS backing or ABS backing.  
High impact, molded PS or ABS backing.

### Poster Material & Thickness

0,10 – 0,20 mm for standard product. Max poster thickness is 1 mm. Any non-standard poster thicknesses should be indicated with order.

### Surface Finish

Silver anodized or black colour, antimicrobial powder coating. Custom colors also available, call for custom color requests.

### Recycled Content

Up to 78% recycled content used.

### Warranty

All products are guaranteed for 3 years by MT Displays with below conditions:  
[Warranty Conditions](#)

### Installation Considerations

Each frame includes wall mounting accessories (4 screws & 4 plugs). Each frame is packed individually in a cardboard box.

### Storage Conditions

Goods should be stored at 0° to 25°C in a dry place. Store in the original package.

### Design Considerations

Suitable for silk screen printing, max. letter height is 8 mm.

### Cleaning and Disinfecting

Clean your displays, with damp microfiber clothes, rinsed with simply water or warm, soapy or gentle shampooed water. Avoid using vinegar, abrasive, acidic, alcohol-based or heavy cleaners or cleaners containing Ammonia. Only after cleaning the product, if needed, simply apply disinfectant or sanitizer that is in compliance with your local guidelines and regulations.

### Certifications / Patents

## PRINT TEMPLATES

### Snap Frame 15 mm - A5

Document Size: 158 x 220 mm (Includes Bleeds)  
Finished Size: A5 (148 x 210 mm) [Print](#)

### Snap Frame 15 mm - A4

Document Size: 220 x 307 mm (Includes Bleeds)  
Finished Size: A4 (210 x 297 mm) [Print](#)

### Snap Frame 15 mm - A3

Document Size: 307 x 430 mm (Includes Bleeds)  
Finished Size: A3 (297 x 420 mm) [Print](#)

### Snap Frame 15 mm - A2

Document Size: 430 x 604 mm (Includes Bleeds)  
Finished Size: A2 (420 x 594 mm) [Print](#)

### Snap Frame 15 mm - A1

Document Size: 604 x 851 mm (Includes Bleeds)  
Finished Size: A1 (594 x 841 mm) [Print](#)

### Snap Frame 15 mm - B2

Document Size: 510 x 710 mm (Includes Bleeds)  
Finished Size: B2 (500 x 700 mm) [Print](#)

### Snap Frame 15 mm - B1

Document Size: 710 x 1010 mm (Includes Bleeds)  
Finished Size: B1 (700 x 1000 mm) [Print](#)

### Snap Frame 0.59" - 8.5"x11"

Document Size: 8.9" x 11.4" (Includes Bleeds)  
Finished Size: 8.5"x11" (215.9x279.4 mm)

### Snap Frame 0.59" - 11"x17"

Document Size: 11.4" x 17.4" (Includes Bleeds)  
Finished Size: 11"x17" (279.4x431.8 mm)

### Snap Frame 0.59" - 14"x22"

Document Size: 14.4" x 22.4" (Includes Bleeds)  
Finished Size: 14"x22" (355.6x558.8 mm)

### Snap Frame 0.59" - 16"x20"

Document Size: 16.4" x 20.4" (Includes Bleeds)  
Finished Size: 16"x20" (406.4x508 mm)

### Snap Frame 0.59" - 17"x22"

Document Size: 17.4" x 22.4" (Includes Bleeds)  
Finished Size: 17"x22" (431.8x558.8 mm)

### Snap Frame 0.59" - 18"x24"

Document Size: 18.4" x 24.4" (Includes Bleeds)  
Finished Size: 18"x24" (457.2x609.6 mm)

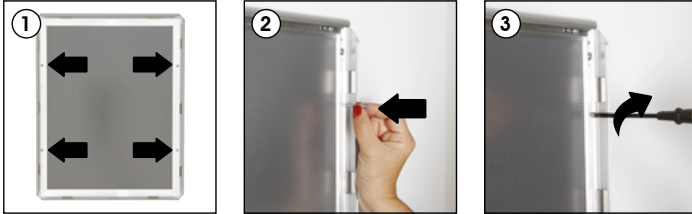
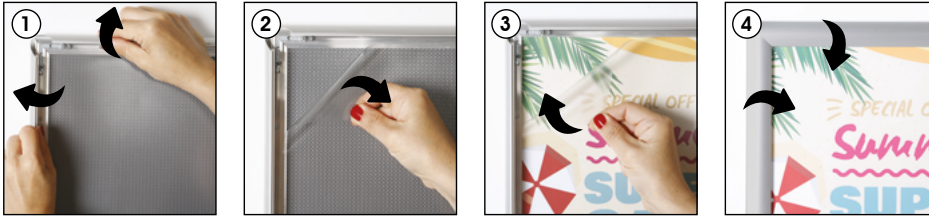
### Snap Frame 0.59" - 20"x30"

Document Size: 20.4" x 30.4" (Includes Bleeds)  
Finished Size: 20"x30" (508x762 mm)



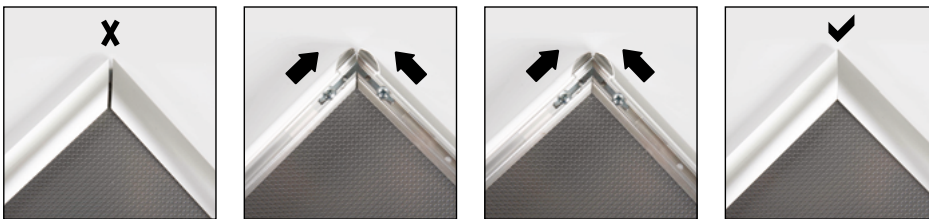
# INSTALLATION INSTRUCTIONS

## Snap Frame 15 mm / 1001846



Screw & anchor mounting

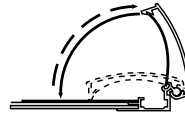
### Fixing uneven corners



1. If your frame corners are slightly uneven, there is an easy fixing. Follow these steps with care, as the corners are sharp.

2. Locate the metal brackets on the back of your frame near the gap and loosen the screws. Push the two sides of the frame together and retighten the screws.

3. Your frame corners should be perfectly aligned!



- Please inform the order number on the product or on the carton (e.g. 1/110001394-460) to the place that you have made the purchase if any problem with the product occurs.
- All rights reserved. All pictures, figures and writings are secured internationally by copy-right law. Infringements will be sued by civil and legal law.



This technical sheet's contents are all subject to update and modification at MT Displays' exclusive discretion. There is nothing official about this document. For final and legally binding information, please get in touch with the sales staff at MT Displays.



T: +90 850 433 67 85 / info@mtdisplays.com / www.mtdisplays.com