

SNAP FRAME 20 MM



“CLICK CLACK” QUICK POSTER FRAMES FOR DISPLAYING YOUR ADS

Snap frames are one of most affordable and useful tools to display your graphics, advertisements, notes, posters and many other inserts. This poster frame is designed for graphics between A4 & 30"-40" poster sizes.

It is so easy to place or swap your graphics with this front loading poster frame. Snap open four front aluminum profiles and place your graphic with the protection lens over it and snap shut. Protection lens is made of PET. It is semi mat to prevent glaring. Another purpose of this lens is to protect your graphic from dirt and dust.

KEY SELECTION ATTRIBUTES

- * Easy to mount, simple to carry.
- * Ideal for various small-sized posters.
- * Frame with a slim profile design and mitred corners.
- * Natural silver-anodized and various RAL colors available with antimicrobial powder coating.
- * High impact molded plastic backing.



- * Anti-glare poster cover sheet.
- * Standard with screws and anchors for wall hanging in landscape or portrait positions.
- * Optional V-Hangers for easy wall mounting.
- * Optional support for counter-top standing.
- * Max length 150cm and max perimeter 400cm.



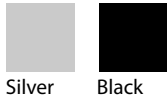
Silver Anodised, Mitred Corner



Black - RAL 9005, Mitred Corner

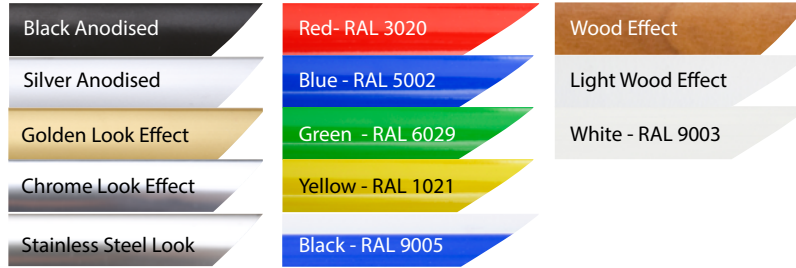


COLOURS IN STOCK



Silver Black

COLOUR OPTIONS

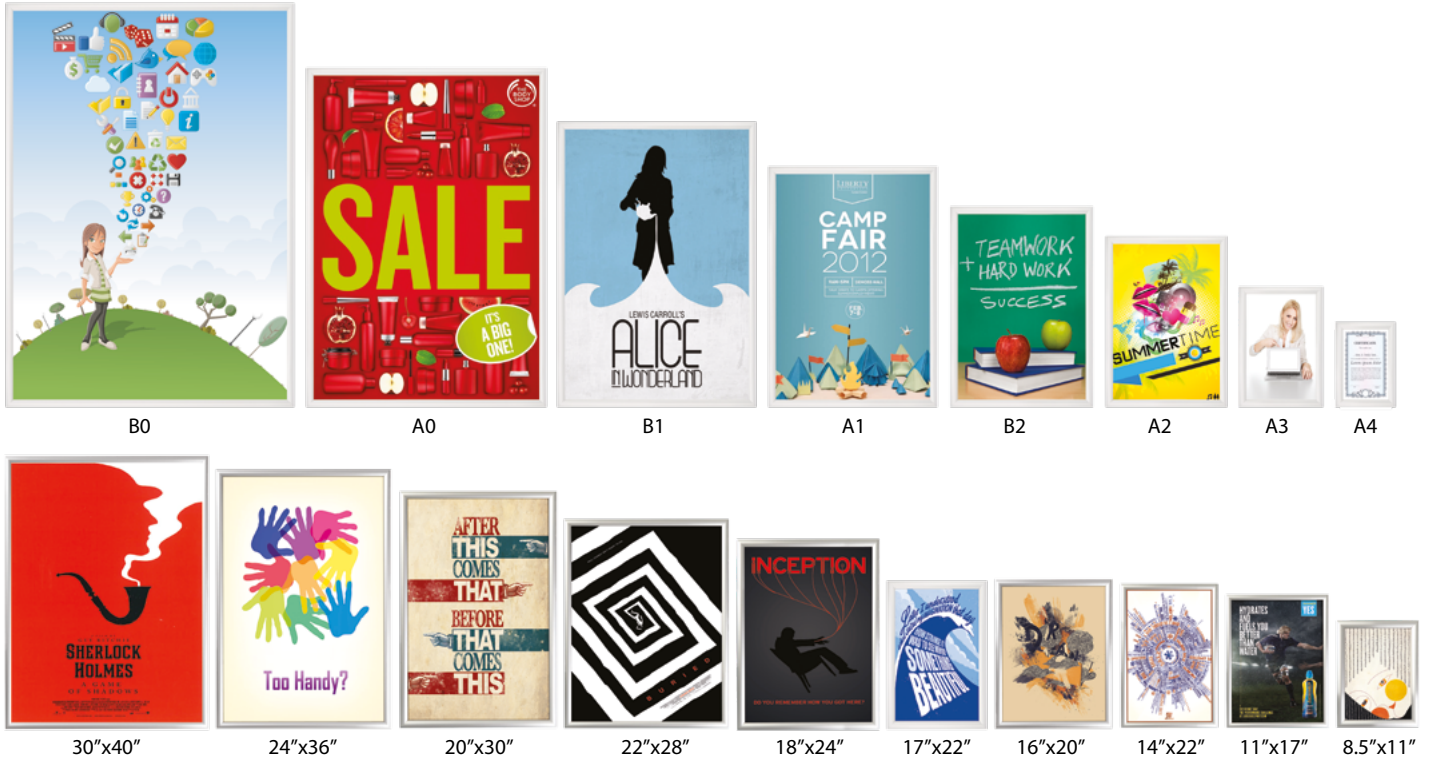


CORNER TYPES



Mitred corner

SNAP FRAME FAMILY



SUITABLE FOR

Snap Frame can be used for INDOOR applications, for signage needs in many locations like shopping centers, markets, groceries, hotels, offices airports, shops and stores, hospitals, schools, apartments and many more.

WATCH VIDEO

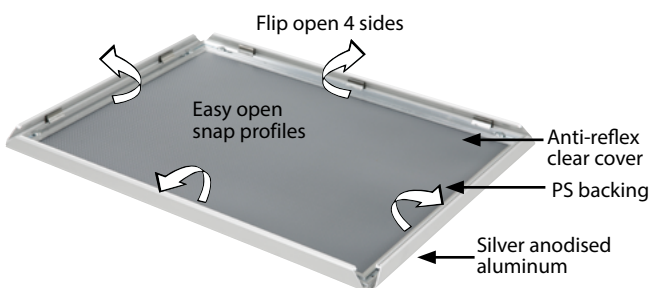


Watch video at our website www.mtdisplays.com

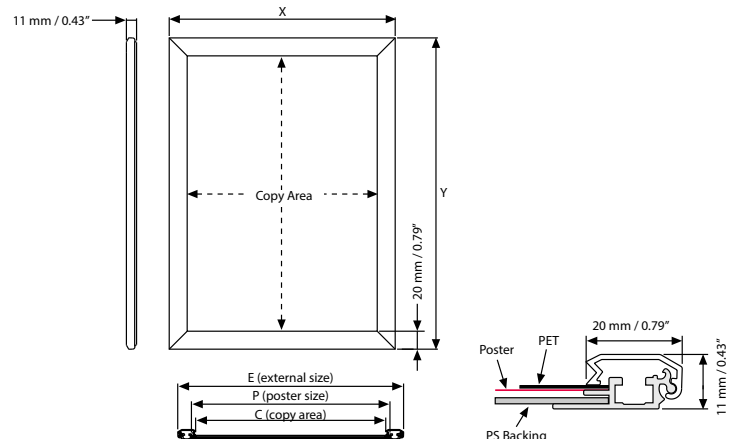
FEATURES



EXPLODED VIEW



TECHNICAL DRAWING

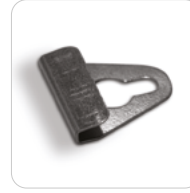


T: +90 850 433 67 85 / info@mtdisplays.com / www.mtdisplays.com

ARTICLES

ARTICLE	EXTERNAL (x-y)	POSTER	COPY	WEIGHT	PACKING SIZE
				WITH PACKING	*W X H X D
UCN205N0A4	240 X 327 mm	210 X 297 mm	202 X 289 mm	0,480 kg	250 X 350 X 21 mm
UCN205N0A3	327 X 450 mm	297 X 420 mm	289 X 412 mm	0,750 kg	350 X 460 X 21 mm
UCN205N0A2	450 X 624 mm	420 X 594 mm	412 X 586 mm	1,220 kg	460 X 660 X 21 mm
UCN205N0A1	624 X 871 mm	594 X 841 mm	586 X 833 mm	2,240 kg	650 X 900 X 21 mm
UCN205N0B2	530 X 730 mm	500 X 700 mm	492 X 692 mm	1,450 kg	550 X 750 X 21 mm
UCN205N0B1	730 X 1030 mm	700 X 1000 mm	692 X 992 mm	2,970 kg	750 X 1050 X 21 mm
UCN205N081	9.69" X 12.17"	8.5" X 11"	8.19" X 10.67"	1.102 lbs	10.63" X 12.99" X 0.83"
UCN205N017	12.17" X 18.19"	11" X 17"	10.67" X 16.69"	1.873 lbs	12.99" X 18.90" X 0.83"
UCN205N012	18.19" X 23.19"	17" X 22"	16.69" X 21.69"	2.711 lbs	19.29" X 24.41" X 0.83"
UCN205N018	19.21" X 25.20"	18" X 24"	17.72" X 23.70"	2.645 lbs	20.08" X 25.98" X 0.83"
UCN205N013	19.21" X 31.18"	18" X 30"	17.72" X 29.69"	3.637 lbs	20.47" X 32.28" X 0.83"

OPTIONAL ACCESSORIES



V Hanger / UYAA011010

PHYSICAL DATA

Material

20 mm aluminum profiles.
PET poster cover, High impact, molded PS or ABS backing.

Poster Material & Thickness

0,10 – 0,20 mm for standard product. Max poster thickness is 1 mm. Any non-standard poster thicknesses should be indicated with order.

Surface Finish

Silver anodized or black colour, antimicrobial powder coating. Custom colors also available, call for custom color requests.

Recycled Content

Up to 78% recycled content used.

Warranty

All products are guaranteed for 3 years by MT Displays with below conditions:
[Warranty Conditions](#)

Installation Considerations

Each frame includes wall mounting accessories (4 screws & 4 plugs). Each frame is packed individually in a cardboard box.

Storage Conditions

Goods should be stored at 0° to 25°C in a dry place. Store in the original package.

Design Considerations

Suitable for silk screen printing, max. letter height is 11 mm.

Cleaning and Disinfecting

Clean your displays, with damp microfiber clothes, rinsed with simply water or warm, soapy or gentle shampooed water. Avoid using vinegar, abrasive, acidic, alcohol-based or heavy cleaners or cleaners containing Ammonia. Only after cleaning the product, if needed, simply apply disinfectant or sanitizer that is in compliance with your local guidelines and regulations.

Certifications / Patents

PRINT TEMPLATES

Snap Frame 20 mm - A4

Document Size: 220 x 307 mm (Includes Bleeds)
Finished Size: A4 (210 x 297 mm) [Print](#)

Snap Frame 20 mm - A3

Document Size: 307 x 430 mm (Includes Bleeds)
Finished Size: A3 (297 x 420 mm) [Print](#)

Snap Frame 20 mm - A2

Document Size: 430 x 604 mm (Includes Bleeds)
Finished Size: A2 (420 x 594 mm) [Print](#)

Snap Frame 20 mm - A1

Document Size: 604 x 851 mm (Includes Bleeds)
Finished Size: A1 (594 x 841 mm) [Print](#)

Snap Frame 20 mm - B2

Document Size: 510 x 710 mm (Includes Bleeds)
Finished Size: B2 (500 x 700 mm) [Print](#)

Snap Frame 120 mm - B1

Document Size: 710 x 1010 mm (Includes Bleeds)
Finished Size: B1 (700 x 1000 mm) [Print](#)

Snap Frame 0.79" - 8.5"x11"

Document Size: 8.9" x 11.4" (Includes Bleeds)
Finished Size: 8.5"x11" (215.9x279.4 mm)

Snap Frame 0.79" - 11"x17"

Document Size: 11.4" x 17.4" (Includes Bleeds)
Finished Size: 11"x17" (279.4x431.8 mm)

Snap Frame 0.79" - 17"x22"

Document Size: 17.4" x 22.4" (Includes Bleeds)
Finished Size: 17"x22" (431.8x558.8 mm)

Snap Frame 0.79" - 18"x24"

Document Size: 18.4" x 24.4" (Includes Bleeds)
Finished Size: 18"x24" (457.2x609.6 mm)

Snap Frame 0.79" - 18"x30"

Document Size: 18.4" x 24.4" (Includes Bleeds)
Finished Size: 18"x24" (457.2x609.6 mm)

Snap Frame 0.79" - 20"x30"

Document Size: 20.4" x 30.4" (Includes Bleeds)
Finished Size: 20"x30" (508x762 mm) [Print](#)

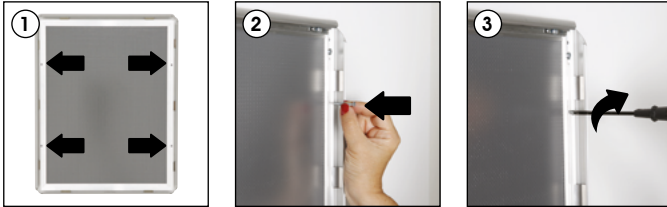
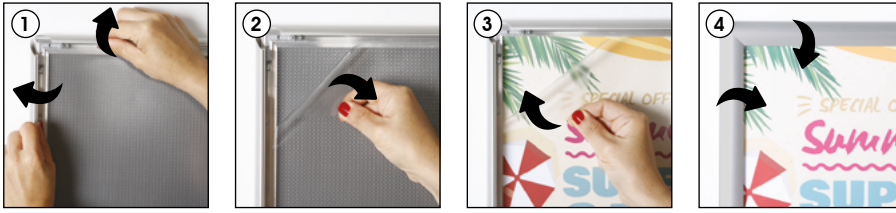
Snap Frame 0.79" - 30"x40"

Document Size: 20.4" x 30.4" (Includes Bleeds)
Finished Size: 20"x30" (508x762 mm) [Print](#)



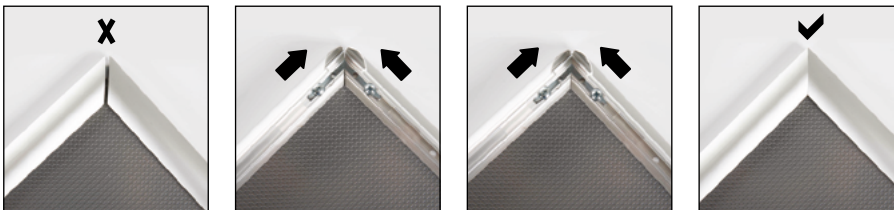
INSTALLATION INSTRUCTIONS

Snap Frame 20 mm / 1001846



Screw & anchor mounting

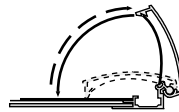
Fixing uneven corners



1. If your frame corners are slightly uneven, there is an easy fixing. Follow these steps with care, as the corners are sharp.

2. Locate the metal brackets on the back of your frame near the gap and loosen the screws. Push the two sides of the frame together and retighten the screws.

3. Your frame corners should be perfectly aligned!



- Please inform the order number on the product or on the carton (e.g. 1/110001394-460) to the place that you have made the purchase if any problem with the product occurs.
- All rights reserved. All pictures, figures and writings are secured internationally by copy-right law. Infringements will be sued by civil and legal law.



This technical sheet's contents are all subject to update and modification at MT Displays' exclusive discretion. There is nothing official about this document. For final and legally binding information, please get in touch with the sales staff at MT Displays.



T: +90 850 433 67 85 / info@mtdisplays.com / www.mtdisplays.com