

## SNAP FRAME 45 MM



### BIG SIZE "CLICK CLACK" POSTER FRAMES WITH THINNEST POSSIBLE SIDES

The poster frame combines the desirable features of affordability with style and ease of use. The snap frame has secured its name and reputation owing to the clip style, hinge support structures that simply flip open and snap back into place for the easy rotation of graphics. The removal and replacement of images can be achieved in a matter of seconds with the clip metal sign frame. Best of all, the poster holder is a wall mountable display unit whereby the front loading design of the structure means you will not have to disassemble and reassemble the frame once it has been mounted. The poster frame can be positioned in either portrait or landscape presentation, with screws and anchors supplied.

### KEY SELECTION ATTRIBUTES

- \* Easy to mount, simple to carry.
- \* "Click Clack" snap open working principle
- \* Ideal for every poster size.
- \* Frame with a slim profile design and mitred corners.
- \* Natural silver-anodized and various RAL colors available with antimicrobial powder coating.



- \* High impact molded plastic backing.
- \* Anti-glare poster cover sheet.
- \* Standard with screws and anchors for wall hanging in landscape or portrait positions.
- \* Optional V-Hangers for easy wall mounting.
- \* Max length 135x250cm and max perimeter 770cm.



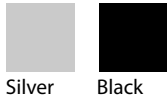
Silver Anodised, Mitred Corner



Black - RAL 9005, Mitred Corner

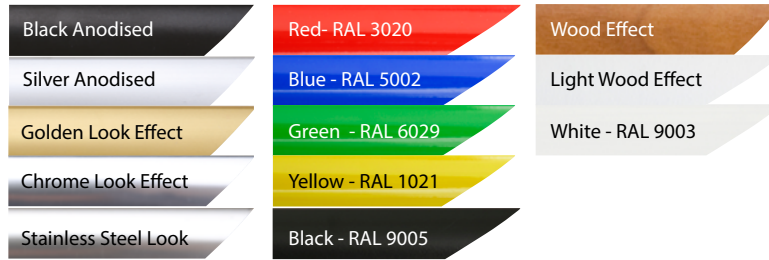


## COLOURS IN STOCK

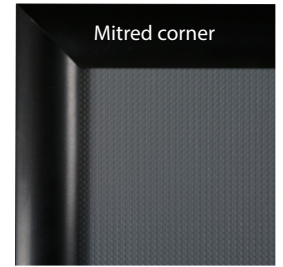


Silver Black

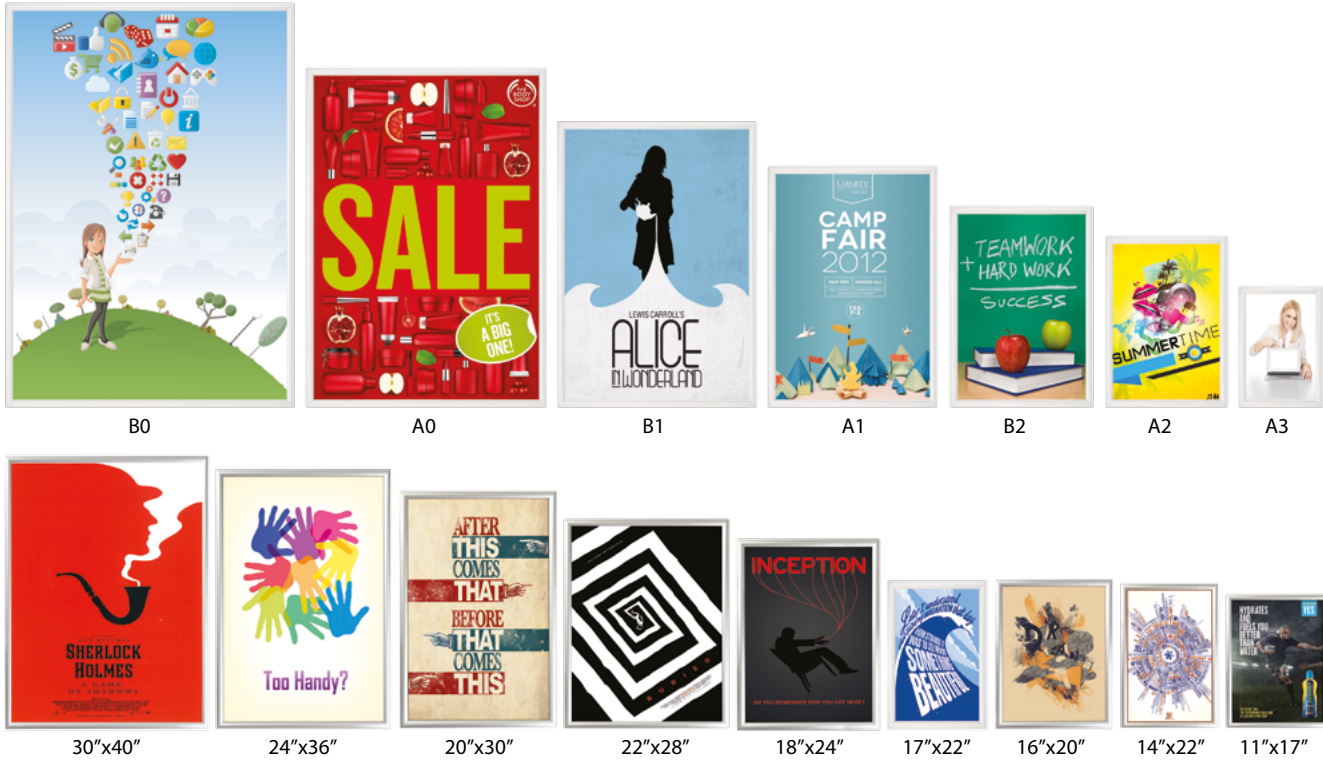
## COLOUR OPTIONS



## CORNER TYPES



## SNAP FRAME FAMILY



## SUITABLE FOR

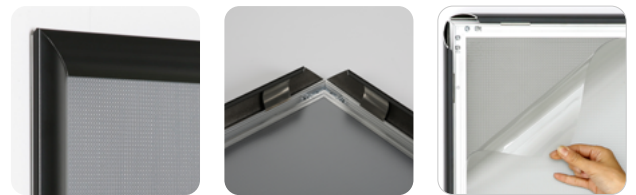
Snap Frame can be used for INDOOR applications, for signage needs in many locations like shopping centers, markets, groceries, hotels, offices airports, shops and stores, hospitals, schools, apartments and many more.

## WATCH VIDEO

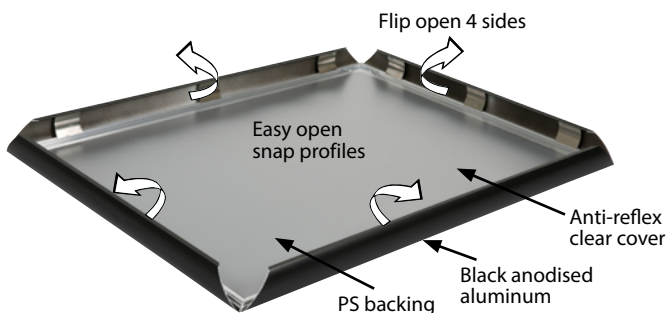


Watch video at our website [www.mtdisplays.com](http://www.mtdisplays.com)

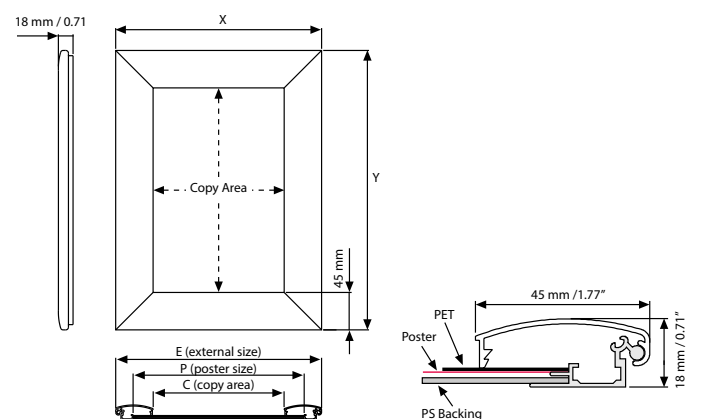
## FEATURES



## EXPLODED VIEW



## TECHNICAL DRAWING

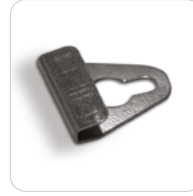


T: +90 850 433 67 85 / [info@mtdisplays.com](mailto:info@mtdisplays.com) / [www.mtdisplays.com](http://www.mtdisplays.com)

## ARTICLES

ARTICLE	EXTERNAL (x-y)	POSTER	COPY	WEIGHT	PACKING SIZE
				WITH PACKING	*W X H X D
UCN455N0A3	340 X 463 mm	297 X 420 mm	252 X 375 mm	1,250 kg	360 X 480 X 31 mm
UCN455N0A2	463 X 637 mm	420 X 594 mm	375 X 549 mm	1,800 kg	480 X 670 X 31 mm
UCN455N0A1	637 X 884 mm	594 X 841 mm	549 X 796 mm	2,840 kg	660 X 910 X 31 mm
UCN455N0A0	884 X 1232 mm	841 X 1189 mm	796 X 1144 mm	5,500 kg	910 X 1270 X 31 mm
UCN455N0B2	543 X 743 mm	500 X 700 mm	455 X 655 mm	2,600 kg	560 X 760 X 31 mm
UCN455N0B1	743 X 1043 mm	700 X 1000 mm	655 X 955 mm	4,000 kg	760 X 1060 X 31 mm
UCN455N0B0	1043 X 1443 mm	1000 X 1400 mm	955 X 1355 mm	6,500 kg	1060 X 1460 X 31 mm
UCN455N0Z3	21.69" X 31.69"	20" X 30"	18.23" X 28.23"	4.739 lbs	22.44" X 32.28" X 1.22"
UCN455N0Z4	31.69" X 41.69"	30" X 40"	28.23" X 38.23"	9.149 lbs	32.28" X 42.25" X 1.22"
UCN455N0Z5	41.69" X 61.69"	40" X 60"	38.23" X 58.23"	15.873 lbs	41.73" X 61.81" X 1.22"
UCN455N0Z6	28.70" X 41.69"	27" X 40"	25.24" X 38.23"	7.716 lbs	29.53" X 42.13" X 1.22"
UCN455N0Z7	37.72" X 49.72"	36" X 48"	34.25" X 46.26"	9.920 lbs	36.61" X 48.82" X 1.22"

## OPTIONAL ACCESSORIES



V Hanger / UYAA011010

## PHYSICAL DATA

### Material

45 mm aluminum profiles.  
PET poster cover, High impact, molded PS or ABS backing.

### Poster Material & Thickness

0,10 – 0,20 mm for standard product. Max poster thickness is 7 mm. Any non-standard poster thicknesses should be indicated with order.

### Surface Finish

Silver anodized or black colour, antimicrobial powder coating. Custom colors also available, call for custom color requests.

### Recycled Content

Up to 78% recycled content used.

### Warranty

All products are guaranteed for 3 years by MT Displays with below conditions:  
[Warranty Conditions](#)

### Installation Considerations

Each frame includes wall mounting accessories (4 screws & 4 plugs). Each frame is packed individually in a cardboard box.

### Storage Conditions

Goods should be stored at 0° to 25°C in a dry place. Store in the original package.

### Design Considerations

Suitable for silk screen printing, max. letter height is 25 mm.

### Cleaning and Disinfecting

Clean your displays, with damp microfiber clothes, rinsed with simply water or warm, soapy or gentle shampooed water. Avoid using vinegar, abrasive, acidic, alcohol-based or heavy cleaners or cleaners containing Ammonia. Only after cleaning the product, if needed, simply apply disinfectant or sanitizer that is in compliance with your local guidelines and regulations.

## PRINT TEMPLATES

### Snap Frame 45 mm - A3

Document Size: 307 x 430 mm (Includes Bleeds)  
Finished Size: A3 (297 x 420 mm) [Print](#)

### Snap Frame 45 mm - A2

Document Size: 430 x 604 mm (Includes Bleeds)  
Finished Size: A2 (420 x 594 mm) [Print](#)

### Snap Frame 45 mm - A1

Document Size: 604 x 851 mm (Includes Bleeds)  
Finished Size: A1 (594 x 841 mm) [Print](#)

### Snap Frame 45 mm - A0

Document Size: 851 x 1199 mm (Includes Bleeds)  
Finished Size: A0 (841 x 1189 mm) [Print](#)

### Snap Frame 45 mm - B2

Document Size: 510 x 710 mm (Includes Bleeds)  
Finished Size: B2 (500 x 700 mm) [Print](#)

### Snap Frame 45 mm - B1

Document Size: 710 x 1010 mm (Includes Bleeds)  
Finished Size: B1 (700 x 1000 mm) [Print](#)

### Snap Frame 45 mm - B0

Document Size: 1010 x 1410 mm (Includes Bleeds)  
Finished Size: B0 (1000x 1400 mm)

### Snap Frame 1.77" - 20"x30"

Document Size: 20.4" x 30.4" (Includes Bleeds)  
Finished Size: 20"x30" (508x762 mm) [Print](#)

### Snap Frame 1.77" - 30"x40"

Document Size: 30.4" x 40.4" (Includes Bleeds)  
Finished Size: 30"x40" (762x1016 mm) [Print](#)

### Snap Frame 1.77" - 40"x60"

Document Size: 40.4" x 60.4" (Includes Bleeds)  
Finished Size: 40"x60" (1016x1524 mm)

### Snap Frame 1.77" - 27"x40"

Document Size: 27.4" x 40.4" (Includes Bleeds)  
Finished Size: 27"x40" (686x1016 mm)

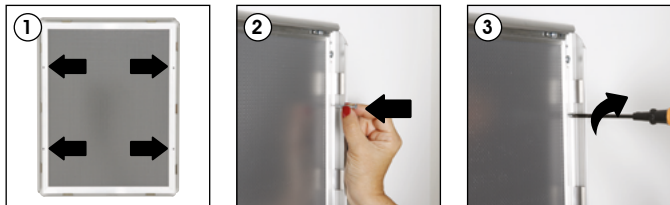
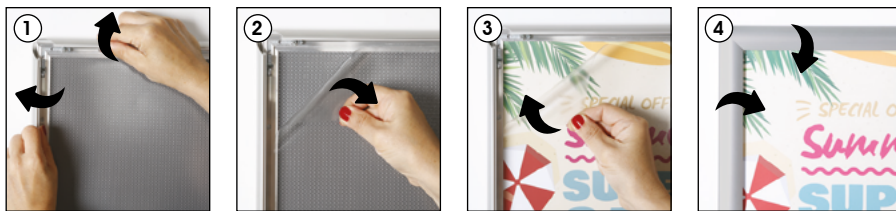
### Snap Frame 1.77" - 36"x48"

Document Size: 36.4" x 48.4" (Includes Bleeds)  
Finished Size: 36"x48" (915x1219 mm)



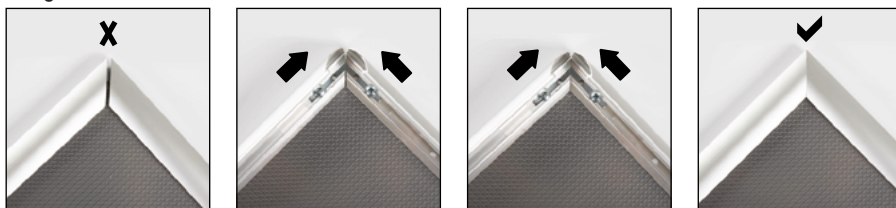
# INSTALLATION INSTRUCTIONS

## Snap Frame 45 mm / 1001846



Screw & anchor mounting

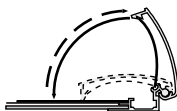
### Fixing uneven corners



1. If your frame corners are slightly uneven, there is an easy fixing. Follow these steps with care, as the corners are sharp.

2. Locate the metal brackets on the back of your frame near the gap and loosen the screws. Push the two sides of the frame together and retighten the screws.

3. Your frame corners should be perfectly aligned!



- Please inform the order number on the product or on the carton (e.g. 1/110001394-460) to the place that you have made the purchase if any problem with the product occurs.
- All rights reserved. All pictures, figures and writings are secured internationally by copy-right law. Infringements will be sued by civil and legal law.



This technical sheet's contents are all subject to update and modification at MT Displays' exclusive discretion. There is nothing official about this document. For final and legally binding information, please get in touch with the sales staff at MT Displays.



T: +90 850 433 67 85 / info@mtdisplays.com / www.mtdisplays.com