

## STAR MAXI LED DOUBLE SIDED

MAXI  
frame



## FRAMELESS LOOKING FABRIC AD SIGNS WITH HOMOGENOUS ILLUMINATION

With its slim profile, 50mm, double sided Star Maxi LED is a modern way of advertising. It is suitable for textile printed graphics. Practical poster application with clear tape provides smooth look. Complete with ceiling suspension system, Star Maxi LED is a practical advertising solution when message is required to be displayed both ways.

### KEY SELECTION ATTRIBUTES

- \* A very modern and slim design, double-sided, wall hanging, edge-lit Maxi Frame system, combining long lasting LED technology bulbs, aluminium profile and sewed or nylon strip for application of printed fabric posters.
- \* One of the most attractive frame designs in the market with frameless look when viewed from the front and back sides.
- \* Powerful illumination is achieved by specially treated acrylic and provides homogenous illumination. Offers evenly diffused lux in all sizes. Depending on the size, 500 to 1400 lux of luminance is achieved.
- \* LED bulbs are not seen from outside, since they are embedded in sides of the frame.
- \* Suitable for INDOOR applications with A0, A1, A2, A3, A4, B1, B2, 20"x30" and 30"x40" poster sizes in portrait and landscape position. Maximum size 850x2000mm.
- \* Do not subject the product to outdoor, high humid and vaporized area. Keep the product out of direct rays of sun. Keep away from the fire or severe hot place. Acceptable ambient temperature is max 35°C.
- \* Star Maxi LED Double Sided can be ordered in standard sizes. They can also be ordered in special lengths and parts as semi products.
- \* Supplied with quality certificates and CE/UL PAT test reports passed. Complies with EN55015 & EN61547.
- \* Natural silver-anodized in standard and various RAL colors available with antimicrobial powder coating. Subject to MOQ.
- \* One set includes a double sided aluminium profile frame with 50mm depth, 4mm channel thickness and embedded LED bulbs; specially treated acrylic backing to diffuse light evenly across graphics; 3mm clear nylon strips; connectors and cleats; 2 screws, 2 anchors, 2 wires with 2 meters length and 2 ceiling hangers for installation; 1 power supply (12V-2A) with 3,5 meter long cable and 1 EU Plug. UK and US plugs are available, should be specified with order. All electrical components are CE listed.
- \* Has no switch. Optional dimmer is available. Adjusting the light from dark to max lux of LED illuminated frame.
- \* Complete with ceiling suspension system. Ceiling hangers let the mounting in portrait and landscape positions.
- \* Fabric is not included in the original pack.
- \* Recommended fabric thickness for digital printing is 0,5mm. Thickness of the profile is 4mm. Thickness of nylon strip is 3mm. The pull sticker in 0,5mm thickness must be sewed into the fabric for taking out the poster when fitted into the channels.
- \* 13mm on each side of the fabric into Maxi Profiles, so 26mm on each Fabric Poster is not seen on the poster. Please arrange accordingly.
- \* Additional print shares suggested for Maxi Frame's Fabric Posters: 28mm between 200-750mm, 20mm between 750-1500mm, 15mm between 1500-3000mm. These values might vary according to the fabric used.
- \* Profiles and connector parts of Star Maxi LED Double Sided for the required sizes are packed unassembled in a single box with an easy mounting instruction sheet. Fixing tools are included in each frame.
- \* Products are suitable to use 7/16. For using the LED frame for 24 hours a day and 7 days a week, please ask for special 7/24 power supplies.



Landscape



## COLOURS IN STOCK



Silver

## SUITABLE FOR

Star Maxi LED Double Sided can be used for INDOOR applications, for signage needs in many locations like shopping centers, markets, groceries, hotels, offices airports, shops and stores, hospitals, schools, apartments, banks, car dealers, restaurants, telecom companies, insurance companies, libraries, museums, travel agencies and many more.

## WATCH VIDEO

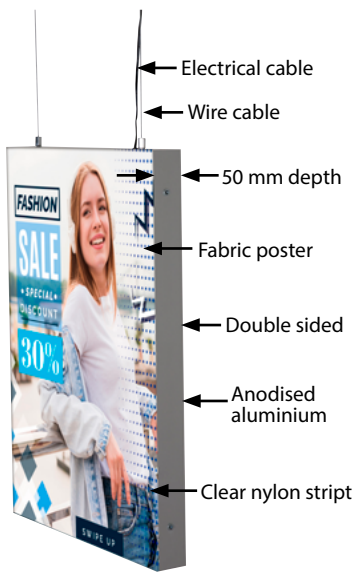


Watch video at our website [www.mtdisplays.com](http://www.mtdisplays.com)

## FEATURES

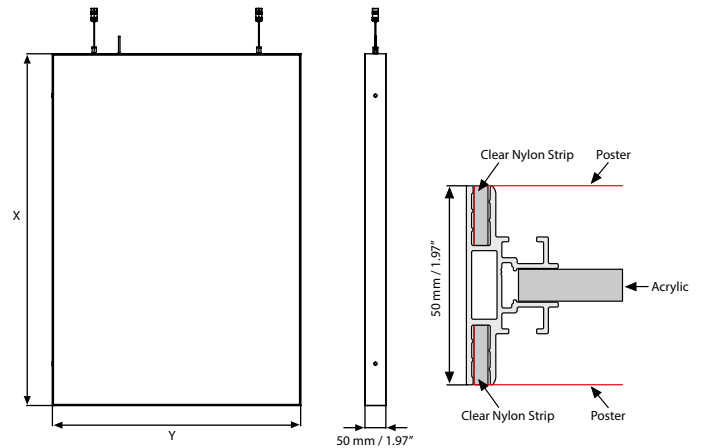


## EXPLODED VIEW

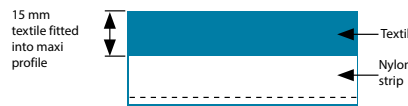


Standard hanging kit for all sizes: 2 meters x 2 pcs wire cable and 2 ceiling hangers.

## TECHNICAL DRAWING



### Application of nylon strip by sew-on process



### Application of nylon strip by double sided tape



## ARTICLES

ARTICLE	EXTERNAL (x-y)	LIGHTING	WEIGHT	PACKING SIZE
			WITH PACKING	*W X H X D
UMLSCN00A4	210 X 297 mm	1200-1400 LUX	1,750 kg	260 X 410 X 70 mm
UMLSCN00A3	297 X 420 mm	1100-1300 LUX	2,300 kg	350 X 530 X 90 mm
UMLSCN00A2	420 X 594 mm	800-1100 LUX	3,750 kg	470 X 700 X 90 mm
UMLSCN00A1	594 X 841 mm	700-1100 LUX	7,250 kg	650 X 950 X 90 mm
UMLSCN00A0	841 X 1189 mm	500-900 LUX	13,700 kg	890 X 1300 X 90 mm
UMLSCN00B2	500 X 700 mm	900-1200 LUX	6,750 kg	550 X 810 X 90 mm
UMLSCN00B1	700 X 1000 mm	700-1100 LUX	9,500 kg	750 X 1110 X 90 mm
UMLSCN0018	18" X 24"	2700-3300 LUX	8.598 lbs	20" X 28.35" X 3.74"
UMLSCN0022	22" X 28"	2700-3300 LUX	12.345 lbs	23.98" X 32.36" X 3.74"
UMLSCN0023	20" X 30"	2700-3200 LUX	12.345 lbs	21.97" X 34.33" X 3.74"
UMLSCN0024	24" X 36"	2700-3200 LUX	17.196 lbs	25.98" X 40.33" X 3.74"
UMLSCN0034	30" X 40"	2700-3200 LUX	28.660 lbs	37.99" X 44.33" X 3.74"
UMLSCN0036	36" X 48"	2700-3300 LUX	28.660 lbs	37.99" X 52.36" X 3.74"
UMLSCN0046	40" X 60"	2700-3200 LUX	47.619 lbs	41.97" X 64.33" X 3.74"

## OPTIONAL ACCESSORIES



Optional dimmer to go with LED illuminated frame.. Simply jack the dimmer in frame and then into powersupply. It adjust the light from dark to max lux of LED illuminated frame. UYUP445550

## COMPONENTS OF MAXI FRAMES



Clear Nylon Strip  
13 x 3 mm, 100 meters.  
UYUP460235



Clear Nylon Strip with tape  
13 x 3 mm, 50 meters.  
UYUP460220



T: +90 850 433 67 85 / [info@mtdisplays.com](mailto:info@mtdisplays.com) / [www.mtdisplays.com](http://www.mtdisplays.com)

# PHYSICAL DATA

## Material

Aluminium profile frame with 50 mm depth, clear nylon strips, metal connectors, acrylic backing, LED bulbs.

## Surface Finish

Natural silver-anodized in standard and various RAL colors available with antimicrobial powder coating. Subject to MOQ. Call for custom color requests.

## Storage Conditions

Goods should be stored at 0° to 25°C in a dry place. Store in the original package.

## Recycled Content

Up to 78% recycled content used.

## Warranty

All products are guaranteed for 3 years by MT Displays with below conditions:

[Warranty Conditions](#)

## Poster Material & Thickness

Recommended fabric thickness for digital printing is 0,5mm. Thickness of the channel is 4mm.

Thickness of nylon strip is 3mm. The pull sticker in 0,5mm thickness must be sewed on the fabric to take out the poster from channels.

## Installation Considerations

Profiles and connector parts of Star Maxi LED Double Sided for the required sizes are packed unassembled in a single box with an easy mounting instruction sheet. Fixing tools are included in each frame. Supplied with quality

certificates and CE/UL PAT test reports passed. Complies with EN55015 & EN61547. One set includes a double sided aluminium profile frame with 50mm depth, 4mm channel thickness and embedded LED bulbs; specially treated acrylic backing to diffuse light evenly across graphics; 3mm clear nylon strips; connectors and cleats; 2 screws, 2 anchors, 2 wires with 2 meters length and 2 ceiling hangers for installation; 1 power supply (12V-2A) with 3,5 meter long cable and 1 EU Plug. UK and US plugs are available, should be specified with order. All electrical components are CE listed. Has no switch. Optional dimmer is available. Adjusting the light from dark to max lux of LED illuminated frame. Products are suitable to use 7/16. For using the LED frame for 24 hours a day and 7 days a week, please ask for special 7/24 power supplies. Complete with ceiling suspension system. Ceiling hangers let the mounting in portrait and landscape positions. Fabric is not included in the original pack. 13mm on each side of the fabric into Maxi Profiles, so 26mm on each Fabric Poster is not seen on the poster. Please arrange accordingly. Additional print shares suggested for Maxi Frame's Fabric Posters: 28mm between 200-750mm, 20mm between 750-1500mm, 15mm between 1500-3000mm. These values might vary according to the fabric used. Star Maxi LED Double Sided can be ordered in standard sizes. They can also be ordered in special lengths and parts as semi products.

## Design Considerations

A very modern and slim design, double-sided, wall hanging, edge-lit Maxi Frame system, combining long lasting LED technology bulbs, aluminium profile and sewed or nylon strip for application of printed fabric posters. One of the most attractive frame designs in the market with frameless look when viewed from the front and back sides. Powerful illumination is achieved by specially treated acrylic and provides homogenous illumination. Offers evenly diffused lux in all sizes. Depending on the size, 500 to 1400 lux of luminance is achieved. LED bulbs are not seen from outside, since they are embedded in sides of the frame. Suitable for INDOOR applications with A0, A1, A2, A3, A4, B1, B2, 20"x30" and 30"x40" poster sizes in portrait and landscape position. Maximum size 850x2000mm. Do not subject the product to outdoor, high humid and vaporized area. Keep the product out of direct rays of sun. Keep away from the fire or severe hot place. Acceptable ambient temperature is max 35°C.

## Cleaning and Disinfecting

Clean your displays, with damp microfiber clothes, rinsed with simply water or warm, soapy or gentle shampooed water. Avoid using vinegar, abrasive, acidic, alcohol-based or heavy cleaners or cleaners containing Ammonia. Only after cleaning the product, if needed, simply apply disinfectant or sanitizer that is in compliance with your local guidelines and regulations.

## Cleaning and Disinfecting

CE/UL Patent approved.

# PRINT TEMPLATES

## Star Maxi LED Double Sided - A4

Document Size: 270x357 mm (Includes Bleeds)

Finished Size: A4 (210 x 297 mm) [Print](#)

## Star Maxi LED Double Sided - A3

Document Size: 357 x 480 mm (Includes Bleeds)

Finished Size: A3 (297 x 420 mm) [Print](#)

## Star Maxi LED Double Sided - A2

Document Size: 480 x 654 mm (Includes Bleeds)

Finished Size: A2 (420 x 594 mm) [Print](#)

## Star Maxi LED Double Sided - A1

Document Size: 654 x 901 mm (Includes Bleeds)

Finished Size: A1 (594 x 841 mm) [Print](#)

## Star Maxi LED Double Sided - A0

Document Size: 901 x 1249 mm (Includes Bleeds)

Finished Size: A0 (841 x 1189 mm) [Print](#)

## Star Maxi LED Double Sided - B2

Document Size: 560 x 760 mm (Includes Bleeds)

Finished Size: B2 (500 x 700 mm) [Print](#)

## Star Maxi LED Double Sided - B1

Document Size: 760 x 1060 mm (Includes Bleeds)

Finished Size: B1 (700 x 1000 mm) [Print](#)

## Star Maxi LED Double Sided - 18"x24"

Document Size: 20.36" x 26.36" (Includes Bleeds)

Finished Size: 18"x24" (457.2x609.6 mm)

## Star Maxi LED Double Sided - 22"x28"

Document Size: 24.36" x 30.36" (Includes Bleeds)

Finished Size: 22"x28" (558.8x711.2 mm)

## Star Maxi LED Double Sided - 20"x30"

Document Size: 22.36" x 32.36" (Includes Bleeds)

Finished Size: 20"x30" (508x762 mm) [Print](#)

## Star Maxi LED Double Sided - 24"x36"

Document Size: 26.36" x 38.36" (Includes Bleeds)

Finished Size: 24"x36" (609.6x914.4 mm)

## Star Maxi LED Double Sided - 30"x40"

Document Size: 32.36" x 42.36" (Includes Bleeds)

Finished Size: 30"x40" (762x1016 mm) [Print](#)

## Star Maxi LED Double Sided - 36"x48"

Document Size: 38.36" x 50.36" (Includes Bleeds)

Finished Size: 36"x48" (914.4x1219 mm)

## Star Maxi LED Double Sided - 40"x60"

Document Size: 42.36" x 62.36" (Includes Bleeds)

Finished Size: 40"x60" (1016x1524 mm)

50mm/ Star Maxi LED	Size Available	Power Consumption	Power Supply Recommended	Luminance
Double Sided	Poster Size	Double	12 Vdc, Ampere	LUX
UMLSCN00A4	A4 / 297x210	10W/0,8A	1A	1200-1400
UMLSCN00A3	A3 / 420x297	12W/1A	2A	1100-1300
UMLSCN00A2	A2 / 594x420	18W/1,5A	3A	800-1100
UMLSCN00A1	A1 / 841x594	25W/2,05A	3A	700-1100
UMLSCN00A0	A0 / 1189x841	33W/2,75A	4A	500-900
UMLSCN00B2	B2 / 700x500	47,5W/3,95A	3A	900-1200
UMLSCN00B1	B1 / 1000x700	29W/2,4A	4A	700-1100
X	B0 / 1400x1000	X	X	X
UMLSCN0023	20"x30" / 508x762	23W/1,9A	3A	800-1200
UMLSCN0034	30"x40" / 762x1016	29W/2,4A	4A	800-1000
X	40"x60" / 1016x1524	X	X	X
Max (w x h) mm	850x2000	X	X	X

POWER SUPPLY	
ARTICLE	DESCRIPTION
UYPLD00010	Power supply EU 3,34A 7/24
UYPLD00011	Power supply EU 6,67A 7/24
UYPLD00012	Power supply EU 8,5A 7/24
UYPLD00013	Power supply EU 11,5A 7/24

Products are suitable to use 7/16. If 7/24 use required, please order individually as 7/24 power supplies as below:

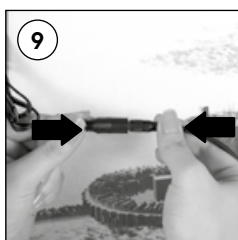
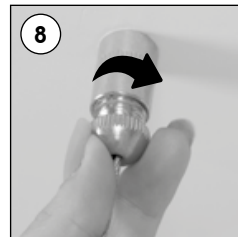
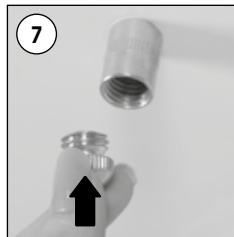
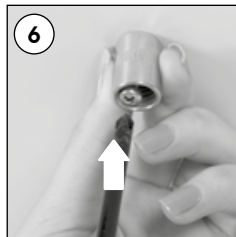
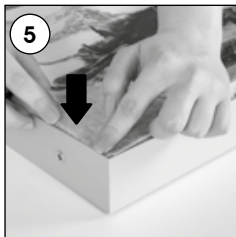
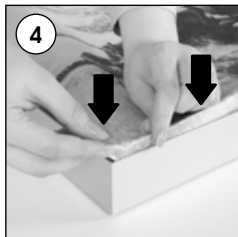
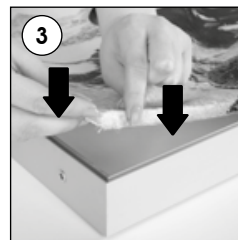
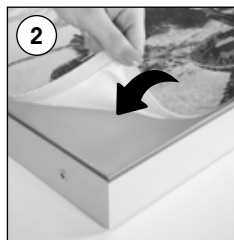
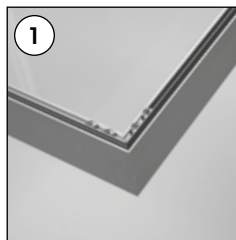


# INSTALLATION INSTRUCTIONS

## Star Maxi LED Double Sided / 1010282H000

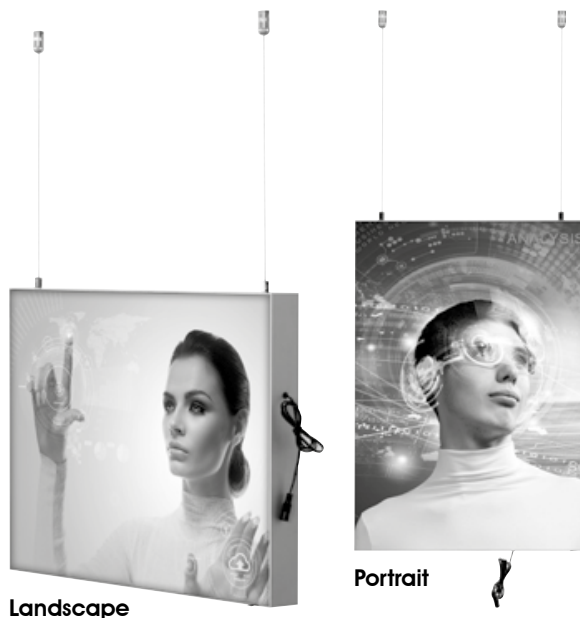
Each product package includes

- 2 x Ceiling hanger set
- 2 x Wire cable Ø1.5, 2000mm
- 2 x Screw
- 2 x Anchor
- 1 x Power supply 12V-3A
- 1 x EU Plug



### Caution!

- 1- Do not step on the light panel nor place the heavy object on the light panel.
- 2- Do not pull the cable with excessive force.
- 3- Use correct capacity and voltage of D.C. power supply. Failure to observe this instruction could result in breakdown.
- 4- Do not touch the light panel or electrical devices with wet hand. Failure to observe this instruction could result in electrical shocks and severe injuries.
- 5- Do not subject this light panel to outdoor, high humid and vaporized area. Failure to observe this instruction could result in breakdown.
- 6- Keep this out of the direct rays of the sun. Failure to observe this instruction could result in color changes of acrylic plate.
- 7- Keep away from fire or severe hot place. Acceptable ambient temperature is max.35°C Failure to observe this instruction could result in shorten the life time and degradation of brightness of LED light source.



- Please inform the order number on the product or on the carton (e.g. 1/110001394-460) to the place that you have made the purchase if any problem with the product occurs.
- All rights reserved. All pictures, figures and writings are secured internationally by copy-right law. Infringements will be sued by civil and legal law.

This technical sheet's contents are all subject to update and modification at MT Displays' exclusive discretion. There is nothing official about this document. For final and legally binding information, please get in touch with the sales staff at MT Displays.



T: +90 850 433 67 85 / info@mtdisplays.com / www.mtdisplays.com