

STAR MAXI LED SINGLE SIDED

MAXI
frame



FRAMELESS LOOKING FABRIC AD SIGNS WITH HOMOGENOUS ILLUMINATION

With its very slim profile, 24mm, Star Maxi LED is a modern way of advertising. It is suitable for textile printed graphics. Practical poster application with clear tape provides smooth look. Complete with wall mounting accessories, Star Maxi LED is a practical advertising solution.

KEY SELECTION ATTRIBUTES

- * A very modern and slim design, single-sided, wall hanging, edge-lit Maxi Frame system, combining long lasting LED technology bulbs, aluminium profile and sewed or nylon strip for application of printed fabric posters.
- * One of the most attractive frame designs in the market with frameless look when viewed from the front side.
- * Powerful illumination is achieved by specially treated acrylic and provides homogenous illumination. Offers evenly diffused lux in all sizes. Depending on the size, 800 to 2800 lux of luminance is achieved.
- * LED bulbs are not seen from outside, since they are embedded in sides of the frame.
- * Suitable for INDOOR applications with A0, A1, A2, A3, A4, B1, B2, 20"x30" and 30"x40" poster sizes in portrait and landscape position. Maximum size 850x1200mm.
- * Do not subject the product to outdoor, high humid and vaporized area. Keep the product out of direct rays of sun. Keep away from the fire or severe hot place. Acceptable ambient temperature is max 35°C.
- * Star Maxi LED Single Sided can be ordered in standard sizes. They can also be ordered in special lengths and parts as semi products.
- * Supplied with quality certificates and CE/UL PAT test reports passed. Complies with EN55015 & EN61547.
- * Natural silver-anodized in standard and various RAL colors available with antimicrobial powder coating. Subject to MOQ.
- * One set includes a single sided aluminium profile frame with 24mm depth, 4mm channel thickness and embedded LED bulbs; specially treated acrylic backing to diffuse light evenly across graphics; 3mm clear nylon strips; connectors and cleats; 2 screws, 2 anchors, 2 wall hangers for installation; 1 power supply (12V-2A) with 3,5 meter long cable and 1 EU Plug. UK and US plugs are available, should be specified with order. All electrical components are CE listed.
- * Has no switch. Optional dimmer is available. Adjusting the light from dark to max lux of LED illuminated frame.
- * Used with 2 wall mounting fixtures on the back. Moving hangers let the mounting in portrait and landscape position.
- * Fabric is not included in the original pack.
- * Recommended fabric thickness for digital printing is 0,5mm. Thickness of the profile is 4mm. Thickness of nylon strip is 3mm. The pull sticker in 0,5mm thickness must be sewed on the fabric for taking out the poster when fitted into the channels.
- * 13mm on each side of the fabric into Maxi Profiles, so 26mm on each Fabric Poster is not seen on the poster. Please arrange accordingly.
- * Additional print shares suggested for Maxi Frame's Fabric Posters: 28mm between 200-750mm, 20mm between 750-1500mm, 15mm between 1500-3000mm. These values might vary according to the fabric used.
- * Profiles and connector parts of Star Maxi LED Single Sided for the required sizes are packed unassembled in a single box with an easy mounting instruction sheet. Fixing tools are included in each frame.
- * Products are suitable to use 7/16. For using the LED frame for 24 hours a day and 7 days a week, please ask for special 7/24 power supplies.



One product,
two positions
(landscape&portrait)



Portrait



COLOURS IN STOCK



Silver

SUITABLE FOR

Star Maxi LED Single Sided can be used for INDOOR applications, for signage needs in many locations like shopping centers, markets, groceries, hotels, offices airports, shops and stores, hospitals, schools, apartments, banks, car dealers, restaurants, telecom companies, insurance companies, libraries, museums, travel agencies and many more.

WATCH VIDEO

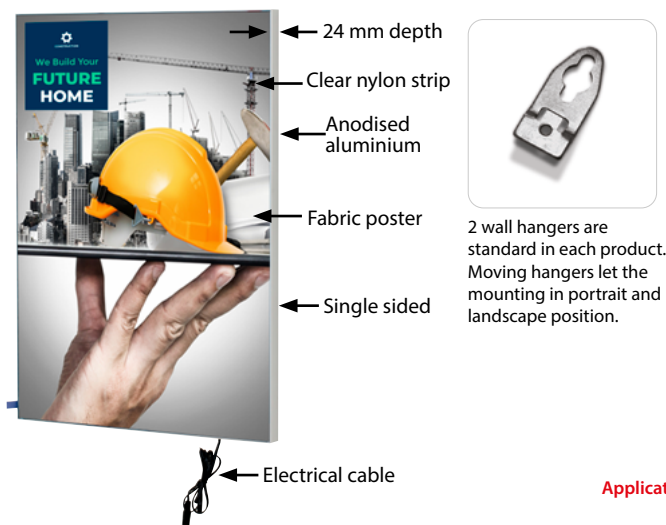


Watch video at our website
www.mtdisplays.com

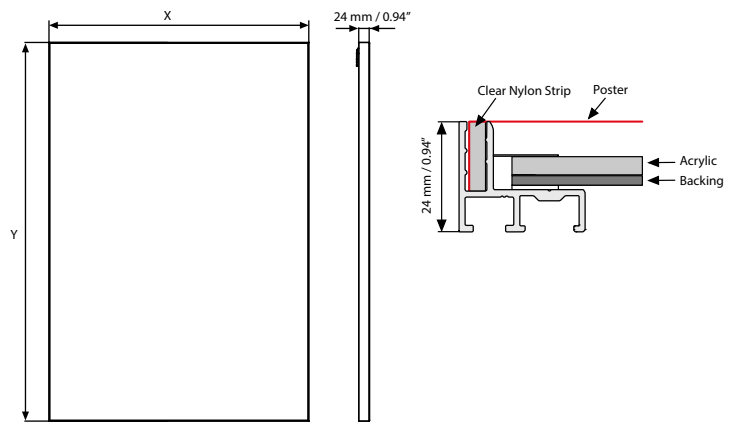
FEATURES



EXPLODED VIEW



TECHNICAL DRAWING



Application of nylon strip by sew-on process



Application of nylon strip by double sided tape



ARTICLES

ARTICLE	EXTERNAL (x-y)	LIGHTING	WEIGHT		PACKING SIZE	
			WITH PACKING		*W X H X D	
UMLSTN00A4	210 X 297 mm	2400-2800 LUX	0,900 kg		260 X 410 X 70 mm	
UMLSTN00A3	297 X 420 mm	2000-2200 LUX	1,200 kg		350 X 530 X 70 mm	
UMLSTN00A2	420 X 594 mm	1400-1800 LUX	1,650 kg		470 X 700 X 70 mm	
UMLSTN00A1	594 X 841 mm	1000-1300 LUX	2,250 kg		650 X 950 X 70 mm	
UMLSTN00A0	841 X 1189 mm	800-1000 LUX	3,450 kg		890 X 1300 X 70 mm	
UMLSTN00B2	500 X 700 mm	1200-1500 LUX	1,950 kg		550 X 810 X 70 mm	
UMLSTN00B1	700 X 1000 mm	900-1200 LUX	2,600 kg		750 X 1110 X 70 mm	
UMLSTN0018	18" X 24"	2500-2700 LUX	5.952 lbs		20" X 28.35" X 2.95"	
UMLSTN0022	22" X 28"	2400-2600 LUX	8.377 lbs		23.98" X 32.36" X 2.95"	
UMLSTN0023	20" X 30"	2300-2600 LUX	8.157 lbs		21.97" X 34.33" X 2.95"	
UMLSTN0024	24" X 36"	2200-2500 LUX	11.904 lbs		25.98" X 40.35" X 2.95"	
UMLSTN0034	30" X 40"	2200-2500 LUX	21.605 lbs		37.99" X 44.33" X 2.95"	
UMLSTN0036	36" X 48"	2100-2400 LUX	23.368 lbs		37.99" X 52.36" X 2.95"	
UMLSTN0046	40" X 60"	2100-2400 LUX	32.187 lbs		41.97" X 64.33" X 2.95"	

MAXIMUM SIZE: 850X1200 mm

OPTIONAL ACCESSORIES



Optional dimmer to go with LED illuminated frame. Simply jack the dimmer in frame and then into powersupply. It adjust the light from dark to max lux of LED illuminated frame.
UYUP445550

COMPONENTS OF MAXI FRAMES



Clear Nylon Strip
13 x 3 mm, 100 meters.
UYUP460235



Clear Nylon Strip with tape
13 x 3 mm, 50 meters.
UYUP460220



T: +90 850 433 67 85 / info@mtdisplays.com / www.mtdisplays.com

PHYSICAL DATA

Material

Aluminium profile frame with 24 mm depth, clear nylon strips, metal connectors, acrylic backing, LED bulbs.

Poster Material & Thickness

Recommended fabric thickness for digital printing is 0,5mm. Thickness of the channel is 4mm. Thickness of nylon strip is 3mm. The pull sticker in 0,5mm thickness must be sewed on the fabric to take out the poster from channels.

Surface Finish

Natural silver-anodized in standard and various RAL colors available with antimicrobial powder coating. Subject to MOQ. Call for custom color requests.

Storage Conditions

Goods should be stored at 0° to 25°C in a dry place. Store in the original package.

Recycled Content

Up to 78% recycled content used.

Warranty

All products are guaranteed for 3 years by MT Displays with below conditions:
[Warranty Conditions](#)

Installation Considerations

Profiles and connector parts of Star Maxi LED Single Sided for the required sizes are packed unassembled in a single box with an easy mounting instruction sheet. Fixing tools are included in each frame. Supplied with quality certificates and CE/UL PAT test reports passed. Complies with

EN55015 & EN61547. One set includes a single sided aluminium profile frame with 24mm depth, 4mm channel thickness and embedded LED bulbs; specially treated acrylic backing to diffuse light evenly across graphics; 3mm clear nylon strips; connectors and cleats; 2 screws, 2 anchors, 2 wall hangers for installation; 1 power supply (12V-2A) with 3,5 meter long cable and 1 EU Plug. UK and US plugs are available, should be specified with order. All electrical components are CE listed. Has no switch. Optional dimmer is available. Adjusting the light from dark to max lux of LED illuminated frame. Products are suitable to use 7/16. For using the LED frame for 24 hours a day and 7 days a week, please ask for special 7/24 power supplies. Used with 2 wall mounting fixtures on the back. Moving hangers let the mounting in portrait and landscape position. Fabric is not included in the original pack. 13mm on each side of the fabric into Maxi Profiles, so 26mm on each Fabric Poster is not seen on the poster. Please arrange accordingly. Additional print shares suggested for Maxi Frame's Fabric Posters: 28mm between 200-750mm, 20mm between 750-1500mm, 15mm between 1500-3000mm. These values might vary according to the fabric used. Star Maxi LED Single Sided can be ordered in standard sizes. They can also be ordered in special lengths and parts as semi products.

Design Considerations

A very modern and slim design, single-sided, wall hanging, edge-lit Maxi Frame system, combining long lasting LED technology bulbs, aluminium profile and sewed or nylon strip for application of printed fabric posters. One of the most attractive frame designs in the market with frameless

look when viewed from the front side. Powerful illumination is achieved by specially treated acrylic and provides homogenous illumination. Offers evenly diffused lux in all sizes. Depending on the size, 800 to 2800 lux of luminance is achieved. LED bulbs are not seen from outside, since they are embedded in sides of the frame. Suitable for INDOOR applications with A0, A1, A2, A3, A4, B1, B2, 20"x30" and 30"x40" poster sizes in portrait and landscape position. Maximum size 850x1200mm. Do not subject the product to outdoor, high humid and vaporized area. Keep the product out of direct rays of sun. Keep away from the fire or severe hot place. Acceptable ambient temperature is max 35°C.

Cleaning and Disinfecting

Clean your displays, with damp microfiber clothes, rinsed with simply water or warm, soapy or gentle shampooed water. Avoid using vinegar, abrasive, acidic, alcohol-based or heavy cleaners or cleaners containing Ammonia. Only after cleaning the product, if needed, simply apply disinfectant or sanitizer that is in compliance with your local guidelines and regulations.

Cleaning and Disinfecting

CE/UL Patent approved.

PRINT TEMPLATES

Star Maxi LED Single Sided - A4

Document Size: 270x357 mm (Includes Bleeds)
Finished Size: A4 (210 x 297 mm) [Print](#)

Star Maxi LED Single Sided - A3

Document Size: 357 x 480 mm (Includes Bleeds)
Finished Size: A3 (297 x 420 mm) [Print](#)

Star Maxi LED Single Sided - A2

Document Size: 480 x 654 mm (Includes Bleeds)
Finished Size: A2 (420 x 594 mm) [Print](#)

Star Maxi LED Single Sided - A1

Document Size: 654 x 901 mm (Includes Bleeds)
Finished Size: A1 (594 x 841 mm) [Print](#)

Star Maxi LED Single Sided - A0

Document Size: 901 x 1249 mm (Includes Bleeds)
Finished Size: A0 (841 x 1189 mm) [Print](#)

Star Maxi LED Single Sided - B2

Document Size: 560 x 760 mm (Includes Bleeds)
Finished Size: B2 (500 x 700 mm) [Print](#)

Star Maxi LED Single Sided - B1

Document Size: 760 x 1060 mm (Includes Bleeds)
Finished Size: B1 (700 x 1000 mm) [Print](#)

Maxi Frame with LED - 18"x24"

Document Size: 20.36" x 26.36" (Includes Bleeds)
Finished Size: 18"x24" (457.2x609.6 mm)

Star Maxi LED Single Sided - 22"x28"

Document Size: 24.36" x 30.36" (Includes Bleeds)
Finished Size: 22"x28" (558.8x711.2 mm)

Star Maxi LED Single Sided - 20"x30"

Document Size: 22.36" x 32.36" (Includes Bleeds)
Finished Size: 20"x30" (508x762 mm) [Print](#)

Star Maxi LED Single Sided - 24"x36"

Document Size: 26.36" x 38.36" (Includes Bleeds)
Finished Size: 24"x36" (609.6x914.4 mm)

Star Maxi LED Single Sided - 30"x40"

Document Size: 32.36" x 42.36" (Includes Bleeds)
Finished Size: 30"x40" (762x1016 mm) [Print](#)

Star Maxi LED Single Sided - 36"x48"

Document Size: 38.36" x 50.36" (Includes Bleeds)
Finished Size: 36"x48" (914.4x1219 mm)

Star Maxi LED Single Sided - 40"x60"

Document Size: 42.36" x 62.36" (Includes Bleeds)
Finished Size: 40"x60" (1016x1524 mm)

24mm/ Star Maxi LED	Size Available	Power Consumption	Power Supply Recommended	Luminance
Single Sided	Poster Size	Single	12 Vdc, Ampere	LUX
UMLSTN00A4	A4 / 297x210	6,5W/0,54A	1A	2400-2800
UMLSTN00A3	A3 / 420x297	11W/0,91A	1A	2000-2200
UMLSTN00A2	A2 / 594x420	15W/1,25A	2A	1400-1800
UMLSTN00A1	A1 / 841x594	21W/1,75A	2A	1000-1300
UMLSTN00A0	A0 / 1189x841	28,5W/2,35A	3A	800-1000
UMLSTN00B2	B2 / 700x500	17,5W/1,45A	2A	1200-1500
UMLSTN00B1	B1 / 1000x700	25W/2,05A	3A	900-1200
X	B0 / 1400x1000	X	X	X
UMLSTN0023	20"x30" / 508x762	18,5W/1,55A	2A	1200-1500
UMLSTN0034	30"x40" / 762x1016	26W/2,1A	3A	900-1000
X	40"x60" / 1016x1524	X	X	X
Max (w x h) mm	850x1200	X	X	X

POWER SUPPLY	
ARTICLE	DESCRIPTION
UYPLD00010	Power supply EU 3,34A 7/24
UYPLD00011	Power supply EU 6,67A 7/24
UYPLD00012	Power supply EU 8,5A 7/24
UYPLD00013	Power supply EU 11,5A 7/24

Products are suitable to use 7/16. If 7/24 use required, please order individually as 7/24 power supplies as below:

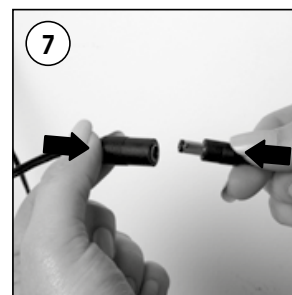
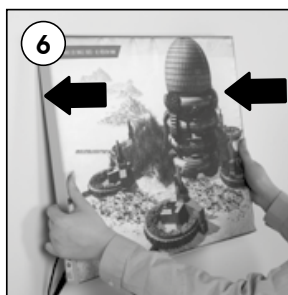
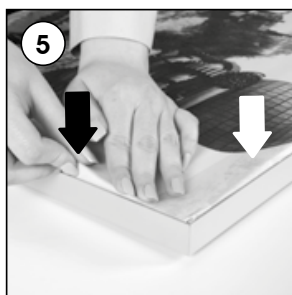
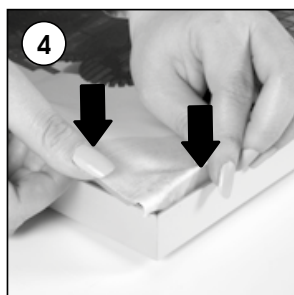
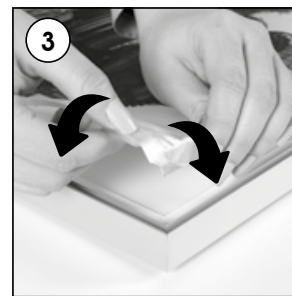
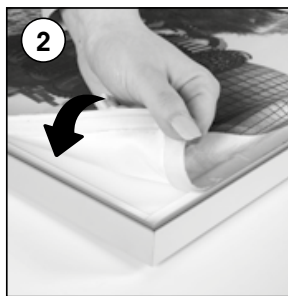
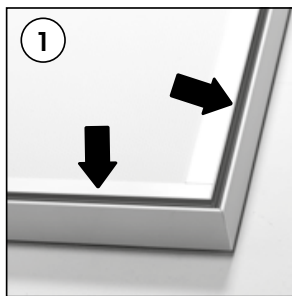


INSTALLATION INSTRUCTIONS

Star Maxi LED Single Sided / 1010281H000

Each product package includes

- 2 x Screw
- 2 x Anchor
- 2 x Hanger
- 1 x Power supply 12V-2A
- 1 x EU Plug



Caution!

- 1- Do not step on the light panel nor place the heavy object on the light panel.
- 2- Do not pull the cable with excessive force.
- 3- Use correct capacity and voltage of D.C. power supply. Failure to observe this instruction could result in breakdown.
- 4- Do not touch the light panel or electrical devices with wet hand. Failure to observe this instruction could result in electrical shocks and severe injuries.
- 5- Do not subject this light panel to outdoor, high humid and vaporized area. Failure to observe this instruction could result in breakdown.
- 6- Keep this out of the direct rays of the sun. Failure to observe this instruction could result in color changes of acrylic plate.
- 7- Keep away from fire or severe hot place. Acceptable ambient temperature is max.35°C Failure to observe this instruction could result in shorten the life time and degradation of brightness of LED light source.



Portrait



Landscape

- Please inform the order number on the product or on the carton (e.g. 1/110001394-460) to the place that you have made the purchase if any problem with the product occurs.
- All rights reserved. All pictures, figures and writings are secured internationally by copy-right law. Infringements will be sued by civil and legal law.

This technical sheet's contents are all subject to update and modification at MT Displays' exclusive discretion. There is nothing official about this document. For final and legally binding information, please get in touch with the sales staff at MT Displays.



T: +90 850 433 67 85 / info@mtdisplays.com / www.mtdisplays.com