

SWINGPRO® PLUS



PROVIDE PROFESSIONAL PRESENTATION OF YOUR PRINT ADS

With increase performance, SwingPro® Plus is more durable against outdoor conditions. It consists of 2 main articles: frame and the base. The gasket in frame provides high vacuuming to UV resistant poster protection to keep the poster dry. PET is fixed on the top profile to help easy poster change. The poster stickers which is suitable for re-use upto 100 times are also keep the poster in place avoid sliding down the frame get wet. No sharp edges and has steel springs for flexibility. Poster use is double sided.

KEY SELECTION ATTRIBUTES

* Double-sided Pavement Sign with swinging steel spring design for flexibility and stability.

* Patent protected (PCT/EP2018/060515) SwingPro Plus is heavy and robust pavement sign for OUTDOOR use with 2 main parts: frame and the base.

* Weatherproof & Wind Resistant: Suitable for windy outdoor conditions and rainy conditions with a rubber seal around the frame for protecting the poster within.

* Suitable for 22"x28" (559x711 mm), 24"x36" (610x914 mm), 30"x40" (762x1016 mm), 20"x30" (508x762 mm), A0 (841x1189 mm), A1 (594x841 mm), B1 (700x1000 mm), B2 (500x700 mm) and F0 (800x1200 mm) poster sizes.

* One set includes a double sided snap open 44 mm aluminium profile swing master frame with 33mm depth, adhesive poster tapes for avoiding sliding down, clear cover hangers and round mitred corners for safety, 2 anti-reflex PET poster covers, 1 strong PP backing, nuts, spanners, heavy steel base profile with side feet, connection pipe, top and bottom brackets and washers for installation.

* Please place the poster on stickers inside the water wick around the inner frame. The gasket in frame provides high vacuuming to UV resistant poster

protection to keep the poster dry. PET is fixed on the top profile to help easy poster change. The poster stickers are also keep the poster in place avoid sliding down the frame and getting wet.

* Optional header accessories are available upon request, not included in standard set. If the frame of SwingPro Lite is required with a "HEADER" option, then the standard frames cannot be used, header enabled frames must be ordered. Please contact our sales department for the frames suitable for use with header.

* Heavy long feet on the base provide stability.

* Natural silver-anodized, black in standard and various RAL colors available with antimicrobial powder coating. Base standard in dark grey color or black, other colors are available upon request.

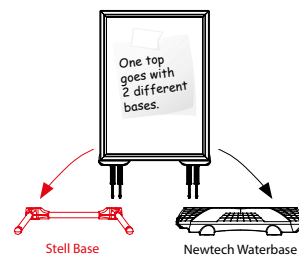
* Packed unassembled with an easy mounting instruction sheet & fixing set.

Assembly in 65-75 seconds.

* Please use the wrench enclosed and tighten carefully. If tightened too much, the base can breach.



Black



Stell Base

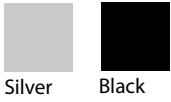
Newtech Waterbase



Silver

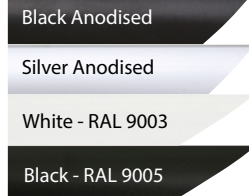


COLOURS IN STOCK



Silver Black

COLOUR OPTIONS



SUITABLE FOR

SwingPro Lite can be used for INDOOR and OUTDOOR applications, for signage needs in many locations like shopping centers, markets, groceries, hotels, offices airports, shops and stores, hospitals, schools, apartments and many more.

WATCH VIDEO



Watch video at our website
www.mtdisplays.com

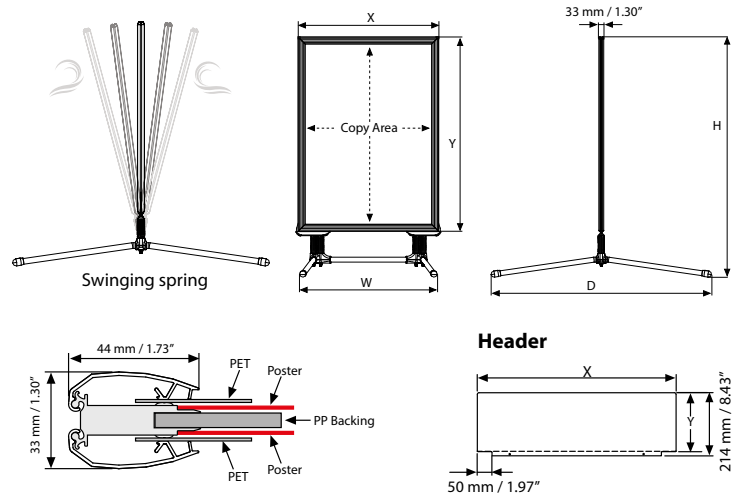
FEATURES



EXPLODED VIEW



TECHNICAL DRAWING



ARTICLES

FRAME					WEIGHT	PACKING SIZE
SILVER	BLACK	EXTERNAL (x-y)	POSTER	COPY	WITH PACKING	*W X H X D
USWPP00NA1	USWPP00BA1	671 X 918 mm	594 X 841 mm	582 X 829 mm	8,000 kg	705 X 1180 X 40 mm
USWPP00NA0	USWPP00BA0	918 X 1266 mm	841 X 1189 mm	829 X 1177 mm	12,000 kg	960 X 1545 X 40 mm
USWPP00NB1	USWPP00BB1	777 X 1077 mm	700 X 1000 mm	688 X 988 mm	10,200 kg	815 X 1320 X 40 mm
USWPP00NB2	USWPP00BB2	577 X 777 mm	500 X 700 mm	488 X 688 mm	6,800 kg	610 X 1020 X 40 mm
USWPP00N23	USWPP00B23	23.03" X 33.03"	20" X 30"	19.53" X 29.53"	17,526 lbs	24.21" X 43.31" X 1.57"
USWPP00N34	USWPP00B34	33.03" X 43.03"	30" X 40"	29.53" X 39.53"	24,912 lbs	34.45" X 53.15" X 1.57"
USWPP00N22	USWPP00B22	25.03" X 31.03"	22" X 28"	21.53" X 27.53"	17,526 lbs	26.18" X 40.55" X 1.57"
USWPP00N24	USWPP00B24	27.03" X 39.03"	24" X 36"	23.53" X 35.53"	19,731 lbs	27.95" X 48.82" X 1.57"
USWPP00NF0	USWPP00BF0	918 X 1398 mm	853 X 1333 mm	841 X 1321 mm	13,000 kg	880 X 1500 X 40 mm

STEEL BASE							WEIGHT	PACKING SIZE
SILVER	BLACK	SIZE	FOR	H	W	D	WITH PACKING	*W X H X D
UTSM001000	UTSM001010	920 mm	20"X30"	44.84"	27.17"	36.22"	7,716 lbs	8.66" X 38.19" X 1.85"
			22"X28"	42.83"	27.17"	36.22"	7,716 lbs	8.66" X 38.19" X 1.85"
			B2	1077 mm	690 mm	920 mm	3,500 kg	220 X 970 X 47 mm
UTSM002000	UTSM002010	1070 mm	A1	1218 mm	690 mm	1070 mm	4,000 kg	220 X 1180 X 47 mm
			24"X36"	50.87"	27.17"	42.13"	8,818 lbs	8.66" X 46.46" X 1.85"
UTSM003000	UTSM003010	1260 mm	B1	1377 mm	890 mm	1260 mm	4,600 kg	220 X 1310 X 47 mm
			30"X40"	54.21"	35.04"	49.61"	10,141 lbs	8.66" X 51.57" X 1.85"
			F0	1577 mm	890 mm	1420 mm	4,600 kg	220 X 1310 X 47 mm
UTSM004000	UTSM004010	1420 mm	A0	1566 mm	890 mm	1420 mm	5,600 kg	220 X 1480 X 47 mm

OPTIONAL ACCESSORIES



SwingPro® Plus & WindPro® Plus header (3 PVC Foam)

HEADER: 3 mm PVC Foam				WEIGHT
ARTICLE	SIZE	PRINTING AREA (x-y)	WITH PACKING	
UYFT0050A1	594 X 841 mm	671 X 200 mm		2,640 kg
UYFT0050A0	841 X 1189 mm	918 X 200 mm		3,615 kg
UYFT0050B1	700 X 1000 mm	777 X 200 mm		3,060 kg
UYFT005022	500 X 700 mm	635 X 200 mm		2,500 kg
UYFT005023	20" X 30"	23.03" X 7.87"		0.507 lbs
UYFT005024	30" X 40"	33.03" X 7.87"		0.738 lbs
UYFT005034	22" X 28"	25" X 7.87"		0.551 lbs
UYFT005046	24" X 36"	27.05" X 7.87"		0.595 lbs
UYFT0050F0	F0	877 X 200 mm		3,500 kg



T: +90 850 433 67 85 / info@mtdisplays.com / www.mtdisplays.com

PHYSICAL DATA

Material

44mm aluminium profile snap open swing master frame, PET anti-reflex poster cover, PP backing, steel profile base. Optional PVC Foam headers

Poster Material & Thickness

0,10 – 0,20 mm for standard product. Max poster thickness is 1,5 mm. Any non-standard poster thicknesses should be indicated with order.

Surface Finish

Natural silver-anodized, black in standard and various RAL colors available with antimicrobial powder coating. Base standard in dark grey color or black, other colors are available upon request. Call for custom color requests.

Recycled Content

Up to 78% recycled content used.

Warranty

All products are guaranteed for 2 years by MT Displays with below conditions:

[Warranty Conditions](#)

Storage Conditions

Goods should be stored at 0° to 25°C in a dry place. Store in the original package.

Installation Considerations

SwingPro Plus is packed unassembled with an easy mounting instruction sheet & fixing set. Assembly in 65-75 seconds. One set includes a double sided snap open 44 mm aluminium profile swing master frame with 33mm depth, adhesive poster tapes, clear cover hangers for avoiding sliding down and round mitred corners for safety, 2 anti-reflex PET poster covers, 1 strong PP backing, nuts, spanners, heavy steel base profile with side feet, connection pipe, top and bottom brackets and washers for installation. Please place the poster on stickers inside the water wick around the inner frame. The gasket in frame provides high vacuuming to UV resistant poster protection to keep the poster dry. PET is fixed on the top profile to help easy poster change. The poster stickers also keep the poster in place avoid sliding down the frame and getting wet. Please use the wrench enclosed and tighten carefully. If tightened too much, the base can breach. Optional header accessories are available upon request, not included in standard set. If the frame of SwingPro Lite is required with a "HEADER" option, then the standard frames cannot be used, header enabled frames must be ordered. Please contact our sales department for the frames suitable for use with header.

Design Considerations

Double-sided Pavement Sign with swinging steel spring design for flexibility and stability. Patent protected SwingPro Plus is heavy and robust pavement sign for OUTDOOR use with 2 main parts: frame and the base. Suitable for windy outdoor conditions and rainy conditions with a rubber seal around the frame for protecting the poster within. Suitable for 22"x28" (559x711 mm), 24"x36" (610x914 mm), 30"x40" (762x1016 mm), 20"x30" (508x762 mm), A0 (841x1189 mm), A1 (594x841 mm), B1 (700x1000 mm), B2 (500x700 mm) and F0 (800x1200 mm) poster sizes. Heavy long feet on the base provide stability.

Cleaning and Disinfecting

Clean your displays, with damp microfiber clothes, rinsed with simply water or warm, soapy or gentle shampooed water. Avoid using vinegar, abrasive, acidic, alcohol-based or heavy cleaners or cleaners containing Ammonia. Only after cleaning the product, if needed, simply apply disinfectant or sanitizer that is in compliance with your local guidelines and regulations.

Patent

OHIM DM/098 297, PCT/EP2018/060515

PRINT TEMPLATES

Swingpro Plus - A1

Document Size: 604 x 851 mm (Includes Bleeds)

Finished Size: A1 (594 x 841 mm) [Print](#)

Swingpro Plus - A0

Document Size: 851 x 1199 (Includes Bleeds)

Finished Size: A0 (841 x 1189 mm) [Print](#)

Swingpro Plus - B2

Document Size: 510 x 710 (Includes Bleeds)

Finished Size: B2 (500 x 700 mm) [Print](#)

Swingpro Plus - B1

Document Size: 710 x 1010 (Includes Bleeds)

Finished Size: B1 (700 x 1000 mm) [Print](#)

Swingpro Plus - 20" x 30"

Document Size: 20.4" x 30.4" (Includes Bleeds)

Finished Size: 20" x 30" (508 x 762 mm) [Print](#)

Swingpro Plus - 22" x 28"

Document Size: 22.4" x 28.4" (Includes Bleeds)

Finished Size: 22" x 28" (558.8 x 711.2 mm) [Print](#)

Swingpro Plus - 24" x 36"

Document Size: 24.4" x 36.4" (Includes Bleeds)

Finished Size: 24" x 36" (609,6 x 914,4 mm) [Print](#)

Swingpro Plus - 30" x 40"

Document Size: 30.4" x 40.4" (Includes Bleeds)

Finished Size: 30" x 40" (762 x 1016 mm) [Print](#)

Swingpro Plus - F0

Document Size: 863 x 1343 (Includes Bleeds)

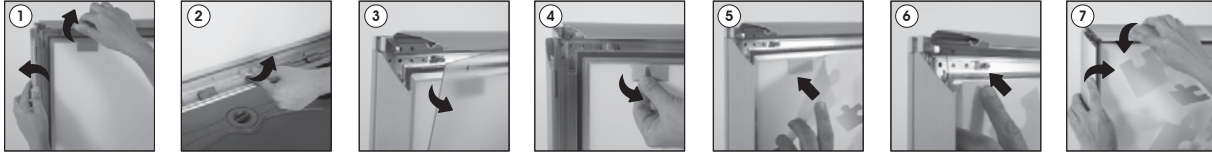
Finished Size: 853 x 1333 mm [Print](#)



INSTALLATION INSTRUCTIONS

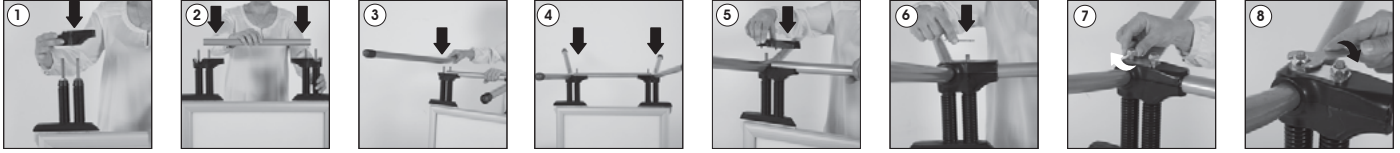
SwingPro® Plus / 1010214H000

Poster Change

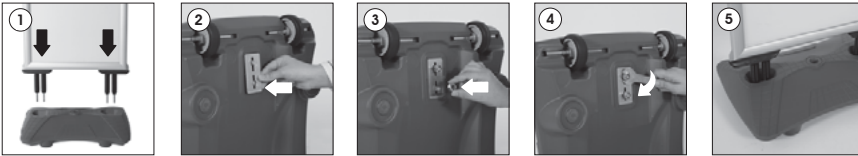


- Each product package includes for Frame**
- 1 x SwingPro Plus & WindPro Plus Frame
 - 2 x PET cover
 - 4 x Nut M10
 - 1 x 17 spanner

SwingPro Plus Steel Base



WindPro Plus Water Base



Each product package includes

- for SwingPro Plus Steel Base**
- 2 x SwingPro side feet
 - 1 x Feet connection pipe
 - 2 x Feet bracket top
 - 2 x Feet bracket bottom
 - 2 x Washer

- for WindPro Plus Water Base**
- 1 x Water base
 - 2 x Washer

- Please inform the order number on the product or on the carton (e.g. 1/110001394-460) to the place that you have made the purchase if any problem with the product occurs.
- All rights reserved. All pictures, figures and writings are secured internationally by copy-right law.
- Infringements will be sued by civil and legal law.



WARNING!

- Please use the wrench enclosed and tighten carefully. When tighten too much, the base can breach.
- It is recommend to carry the product with the tool as shown (optional available), when the base is full with water.



This technical sheet's contents are all subject to update and modification at MT Displays' exclusive discretion. There is nothing official about this document. For final and legally binding information, please get in touch with the sales staff at MT Displays.



T: +90 850 433 67 85 / info@mtdisplays.com / www.mtdisplays.com