

WINDPRO® LITE



DOUBLE SIDED SIDEWALK SIGNS WITH FLEXIBLE SPRING DESIGN

SwingPro® Lite is heavy and robust waterbase pavement sign for outdoor. It consists of 2 main articles: frame and the base. No sharp edges and has steel springs for flexibility. Poster use is double sided. Recommended to use film posters.

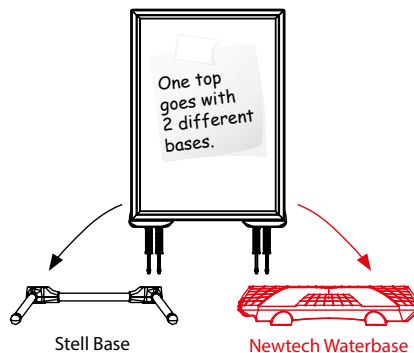
KEY SELECTION ATTRIBUTES

- * Double-sided Pavement Sign with swinging steel spring design for flexibility and stability.
- * Patent protected (PCT/EP2018/060515) WindPro Lite is heavy and robust pavement sign for OUTDOOR use with 2 main parts: frame and the water base.
- * Outdoorfriendly & Wind Resistant: Suitable for windy outdoor conditions. This product is not waterproof, but suitable to use outdoor.
- * Suitable for 22"x28" (559x711 mm), 24"x36" (610x914 mm), 28"x44" (711x1117 mm), 30"x40" (762x1016 mm), A0 (841x1189 mm), A1 (594x841 mm), B1 (700x1000 mm) and B2 (500x700 mm) poster sizes. Recommended to use film posters.
- * One set includes a double sided snap open 33 mm aluminium profile swing master frame with 28mm depth and round mitred corners for safety, 2 anti-reflex PET poster covers, 1 strong PP backing, nuts, spanners, heavy water base with washers for installation.
- * Optional header accessories are available upon request, not included in

- standard set. If the frame of WindPro Lite is required with a "HEADER" option, then the standard articles cannot be used, please contact our sales department for the articles with a header option.
- * It is recommended to carry the product with a carry tool, when the base is full with water. Carry tool is optional, not included in package, should be ordered separately.
- * Heavy water base provides stability.
- * Ground wheels in upside position enable easy movement of the product.
- * Natural silver-anodized, black in standard and various RAL colors available with antimicrobial powder coating. Waterbase standard in dark grey color or black, other colors are available upon request.
- * Packed unassembled with an easy mounting instruction sheet & fixing set. Assembly in 60 seconds.
- * Please use the wrench enclosed and tighten carefully. If tightened too much, the base can breach.



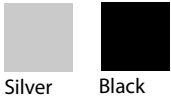
Black



Silver

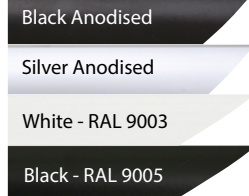


COLOURS IN STOCK



Silver Black

COLOUR OPTIONS



SUITABLE FOR

SwingPro Lite can be used for INDOOR and OUTDOOR applications, for signage needs in many locations like shopping centers, markets, groceries, hotels, offices airports, shops and stores, hospitals, schools, apartments and many more.

WATCH VIDEO



Watch video at our website
www.mtdisplays.com

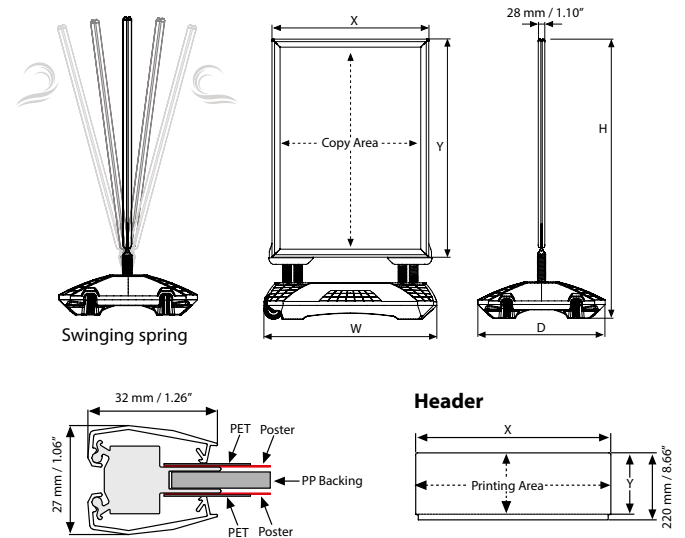
FEATURES



EXPLODED VIEW



TECHNICAL DRAWING



ARTICLES

| FRAME | | | | | WEIGHT | PACKING SIZE |
|------------|------------|-----------------|---------------|-----------------|--------------|-------------------------|
| SILVER | BLACK | EXTERNAL (x-y) | POSTER | COPY | WITH PACKING | *W X H X D |
| USWPLOONA1 | USWPLOOBA1 | 632 X 879 mm | 594 X 841 mm | 568 X 815 mm | 6,385 kg | 680 X 1140 X 35 mm |
| USWPLOONA0 | USWPLOOBA0 | 879 X 1227 mm | 841 X 1189 mm | 815 X 1163 mm | 9,000 kg | 925 X 1490 X 35 mm |
| USWPLOONB1 | USWPLOOBB1 | 738 X 1038 mm | 700 X 1000 mm | 674 X 974 mm | 8,115 kg | 785 X 1300 X 35 mm |
| USWPLOONB2 | USWPLOOBB2 | 538 X 738 mm | 500 X 700 mm | 474 X 674 mm | 5,050 kg | 585 X 1000 X 35 mm |
| USWPLOON22 | USWPLOOB22 | 23.50" X 29.49" | 22" X 28 | 20.98" X 26.98" | 12.015 lbs | 25.39" X 39.76" X 1.38" |
| USWPLOON24 | USWPLOOB24 | 25.51" X 37.52" | 24" X 36" | 22.98" X 34.98" | 14.418 lbs | 27.17" X 47.83" X 1.38" |
| USWPLOON34 | USWPLOOB34 | 31.50" X 41.50" | 30" X 40" | 28.98" X 38.98" | 18.739 lbs | 33.27" X 51.77" X 1.38" |
| USWPLOON84 | USWPLOOB84 | 29.50" X 45.50" | 28" X 44" | 26.98" X 42.98" | 19.841 lbs | 31.30" X 55.71" X 1.38" |

| NEUTECH WATERBASE: HLDPE | | | | | | | WEIGHT | PACKING SIZE |
|--------------------------|------------|--------------|-----------|---------|--------|--------|--------------|-------------------------|
| SILVER | BLACK | SIZE | FOR | H | W | D | WITH PACKING | *W X H X D |
| UTWM003000 | UTWM003010 | 720 X 530 mm | 22" X 28" | 39.33" | 28.35" | 20.87" | 9.876 lbs | 21.85" X 29.53" X 7.01" |
| | | | 24" X 36" | 47.36" | 28.35" | 20.87" | | |
| | | | A1 | 1129 mm | 720 mm | 530 mm | | |
| UTWM004000 | UTWM04010 | 900 X 630 mm | 28" X 44" | 55.31" | 35.43" | 24.80" | 15.101 lbs | 23.82" X 36.61" X 7.01" |
| | | | 30" X 40" | 51.34" | 35.43" | 24.80" | | |
| | | | B1 | 1288 mm | 900 mm | 630 mm | 6,850 kg | 605 X 930 X 178 mm |
| | | | A0 | 1477 mm | 900 mm | 630 mm | | |

| HEADER: 3 mm PVC Foam | | | WEIGHT |
|-----------------------|---------------|---------------------|--------------|
| ARTICLE | SIZE | PRINTING AREA (x-y) | WITH PACKING |
| UYFT0040A1 | 594 X 841 mm | 632 X 200 mm | 2,650 kg |
| UYFT0040A0 | 841 X 1189 mm | 879 X 200 mm | 3,680 kg |
| UYFT0040B2 | 500 X 700 mm | 538 X 200 mm | 2,250 kg |
| UYFT0040B1 | 700 X 1000 mm | 738 X 200 mm | 3,090 kg |
| UYFT004022 | 22" X 28" | 23.50" X 7.87" | 0.551 lbs |
| UYFT004024 | 24" X 36" | 25.51" X 7.87" | 0.595 lbs |
| UYFT004034 | 30" X 40" | 31.50" X 7.87" | 0.738 lbs |
| UYFT004084 | 28" X 44" | 29.53" X 7.87" | 0.683 lbs |



T: +90 850 433 67 85 / info@mtdisplays.com / www.mtdisplays.com

OPTIONAL ACCESSORIES



SwingPro® Lite & WindPro®
Lite header (3 PVC Foam)



Optional carry tool.
UYUP480945

PHYSICAL DATA

Material

33mm aluminium profile snap open swing master frame, PET anti-reflex poster cover, PP backing, steel profile base. Optional PVC Foam headers

Poster Material & Thickness

Recommended to use film posters. 0,10 – 0,20 mm for standard product. Max poster thickness is 2 mm for low density rigid posters such as PVC foam, PP, etc. Any non-standard poster thickness should be indicated with order.

Surface Finish

Natural silver-anodized, black in standard and various RAL colors available with antimicrobial powder coating. Base standard in dark grey color or black, other colors are available upon request. Call for custom color requests.

Recycled Content

For frame part up to 78% and for base part up to 40% recycled content used.

Warranty

All products are guaranteed for 3 years by MT Displays with below conditions:

[Warranty Conditions](#)

Storage Conditions

Goods should be stored at 0° to 25°C in a dry place. Store in the original package.

Installation Considerations

WindPro Lite is packed unassembled with an easy mounting instruction sheet & fixing set. Assembly in 60 seconds. One set includes a double sided snap open 33 mm aluminium profile swing master frame with 28mm depth and round mitred corners for safety, 2 anti-reflex PET poster covers, 1 strong PP backing, nuts, spanners, heavy water base profile with washers for installation. Please use the wrench enclosed and tighten carefully. If tightened too much, the base can breach. Optional header accessories are available upon request, not included in standard set. If the frame of WindPro Lite is required with a "HEADER" option, then the standard articles cannot be used, please contact our sales department for the articles with a header option. Ground wheels in upside position enable easy movement of the product. It is recommended to carry the product with a carry tool, when the base is full with water. Carry tool is optional, not included in package, should be ordered separately.

Design Considerations

Double-sided Pavement Sign with swinging steel spring design for flexibility and stability. Patent protected WindPro Lite is heavy and robust pavement sign for OUTDOOR use with 2 main parts: frame and the waterbase. Outdoorfriendly & Wind Resistant: Suitable for windy outdoor conditions. This product is not waterproof, but suitable to use outdoor. Suitable for 22"x28"

(559x711 mm), 24"x36" (610x914 mm), 28"x44" (711x1117 mm), 30"x40" (762x1016 mm), A0 (841x1189 mm), A1 (594x841 mm), B1 (700x1000 mm) and B2 (500x700 mm) poster sizes. Heavy waterbase provides stability.

Cleaning and Disinfecting

Clean your displays, with damp microfiber clothes, rinsed with simply water or warm, soapy or gentle shampooed water. Avoid using vinegar, abrasive, acidic, alcohol-based or heavy cleaners or cleaners containing Ammonia. Only after cleaning the product, if needed, simply apply disinfectant or sanitizer that is in compliance with your local guidelines and regulations.

Patent

OHIM DM/098 297, PCT/EP2018/060515

PRINT TEMPLATES

Windpro Lite - A1

Document Size: 604 x 851 mm (Includes Bleeds)
Finished Size: A1 (594 x 841 mm) [Print](#)

Windpro Lite - A0

Document Size: 851 x 1199 (Includes Bleeds)
Finished Size: A0 (841 x 1189 mm) [Print](#)

Windpro Lite - B2

Document Size: 510 x 710 (Includes Bleeds)
Finished Size: B2 (500 x 700 mm) [Print](#)

Windpro Lite - B1

Document Size: 710 x 1010 (Includes Bleeds)
Finished Size: B1 (700 x 1000 mm) [Print](#)

Windpro Lite - 22" x 28"

Document Size: 22.4" x 28.4" (Includes Bleeds)
Finished Size: 22" x 28" (558.8 x 711.2 mm) [Print](#)

Windpro Lite - 24" x 36"

Document Size: 24.4" x 36.4" (Includes Bleeds)
Finished Size: 24" x 36" (609,6 x 914,4 mm) [Print](#)

Windpro Lite - 30" x 40"

Document Size: 30.4" x 40.4" (Includes Bleeds)
Finished Size: 30" x 40" (762 x 1016 mm) [Print](#)

Windpro Lite - 28" x 44"

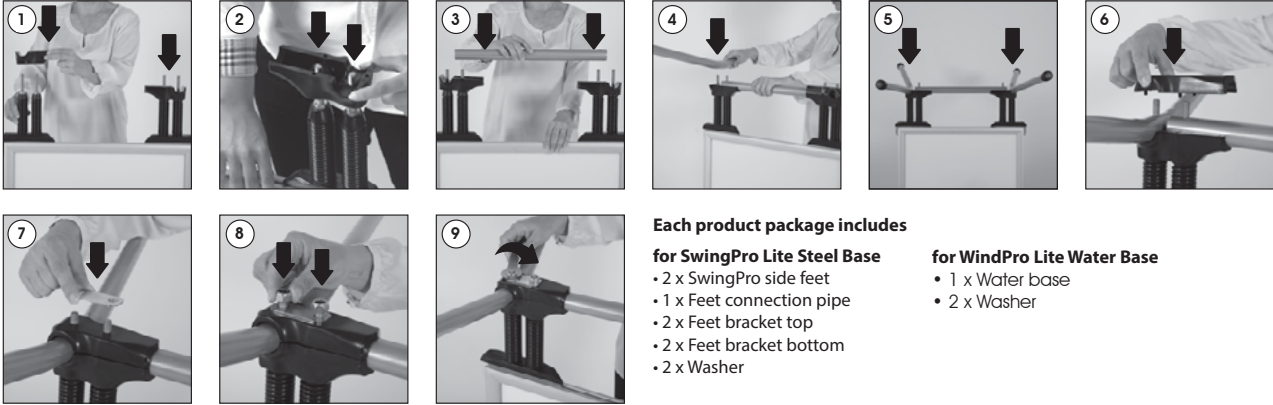
Document Size: 28.4 x 44.4 (Includes Bleeds)
Finished Size: 28" x 44" (711.2 x 1117 mm) [Print](#)



INSTALLATION INSTRUCTIONS

WindPro® Lite / 1010214H000

SwingPro Lite Steel Base



Each product package includes

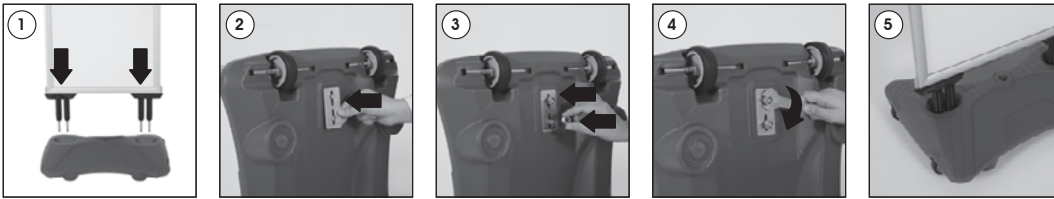
for SwingPro Lite Steel Base

- 2 x SwingPro side feet
- 1 x Feet connection pipe
- 2 x Feet bracket top
- 2 x Feet bracket bottom
- 2 x Washer

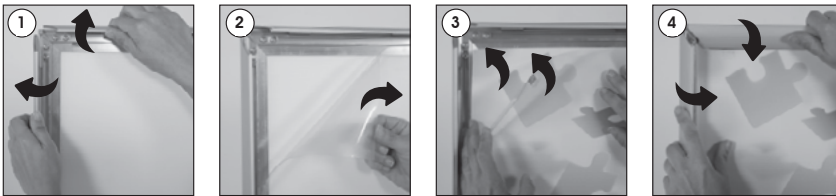
for WindPro Lite Water Base

- 1 x Water base
- 2 x Washer

WindPro Lite Waterbase



Poster Change



Each product package includes for Frame

- 1 x SwingPro Lite & WindPro Lite Frame
- 2 x PET cover
- 4 x Nut M10
- 1 x 17 spanner



WARNING!

- Please use the wrench enclosed and tighten carefully. When tighten too much, the base can breach.
- It is recommend to carry the product with the tool as shown (optional available), when the base is full with water.



- Please inform the order number on the product or on the carton (e.g. 1/110001394-460) to the place that you have made the purchase if any problem with the product occurs.
- All rights reserved. All pictures, figures and writings are secured internationally by copy-right law. Infringements will be sued by civil and legal law.

This technical sheet's contents are all subject to update and modification at MT Displays' exclusive discretion. There is nothing official about this document. For final and legally binding information, please get in touch with the sales staff at MT Displays.



T: +90 850 433 67 85 / info@mtdisplays.com / www.mtdisplays.com