

## WINDPRO® PLUS



### DOUBLE SIDED SIDEWALK SIGNS WITH FLEXIBLE SPRING AND WATERWICK DESIGN

With increase performance, WindPro® Plus is more durable against outdoor conditions. It consists of 2 main articles: frame and the base. The gasket in frame provides high vacuuming to UV resistant poster protection to keep the poster dry. PET is fixed on the top profile to help easy poster change. The poster stickers which is suitable for re-use upto 100 times are also keep the poster in place avoid sliding down the frame get wet. No sharp edges and has steel springs for flexibility. Poster use is double sided.

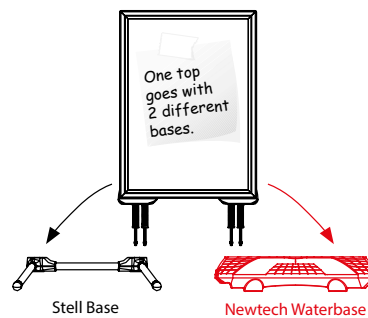
### KEY SELECTION ATTRIBUTES

- \* Double-sided Pavement Sign with swinging steel spring design for flexibility and stability.
- \* Patent protected (PCT/EP2018/060515) WindPro Plus is heavy and robust pavement sign for OUTDOOR use with 2 main parts: frame and the waterbase.
- \* Weatherproof & Wind Resistant: Suitable for windy outdoor conditions and rainy conditions with a rubber seal around the frame for protecting the poster within.
- \* Suitable for 22"x28" (559x711 mm), 24"x36" (610x914 mm), 30"x40" (762x1016 mm), 20"x30" (508x762 mm), A0 (841x1189 mm), A1 (594x841 mm), B1 (700x1000 mm), B2 (500x700 mm) and F0 (800x1200 mm) poster sizes.
- \* One set includes a double sided snap open 44 mm aluminium profile swing master frame with 33mm depth, adhesive poster tapes for avoiding sliding down, clear cover hangers and round mitted corners for safety, 2 anti-reflex PET poster covers, 1 strong PP backing, nuts, spanners, heavy water base profile with washers for installation.
- \* Please place the poster on stickers inside the water wick around the inner frame. The gasket in frame provides high vacuuming to UV resistant poster

- protection to keep the poster dry. PET is fixed on the top profile to help easy poster change. The poster stickers are also keep the poster in place avoid sliding down the frame and getting wet.
- \* Optional header accessories are available upon request, not included in standard set. If the frame of WindPro Lite is required with a "HEADER" option, then the standard frames cannot be used, header enabled frames must be ordered. Please contact our sales department for the frames suitable for use with header.
- \* Heavy waterbase provide stability.
- \* Natural silver-anodized, black in standard and various RAL colors available with antimicrobial powder coating. Base standard in dark grey color or black, other colors are available upon request.
- \* Packed unassembled with an easy mounting instruction sheet & fixing set. Assembly in 60 seconds.
- \* Please use the wrench enclosed and tighten carefully. If tightened too much, the base can breach.



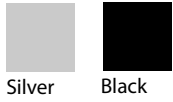
Black



Silver

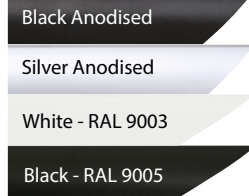


## COLOURS IN STOCK



Silver Black

## COLOUR OPTIONS



## SUITABLE FOR

WindPro Lite can be used for INDOOR and OUTDOOR applications, for signage needs in many locations like shopping centers, markets, groceries, hotels, offices airports, shops and stores, hospitals, schools, apartments and many more.

## WATCH VIDEO



Watch video at our website  
www.mtdisplays.com

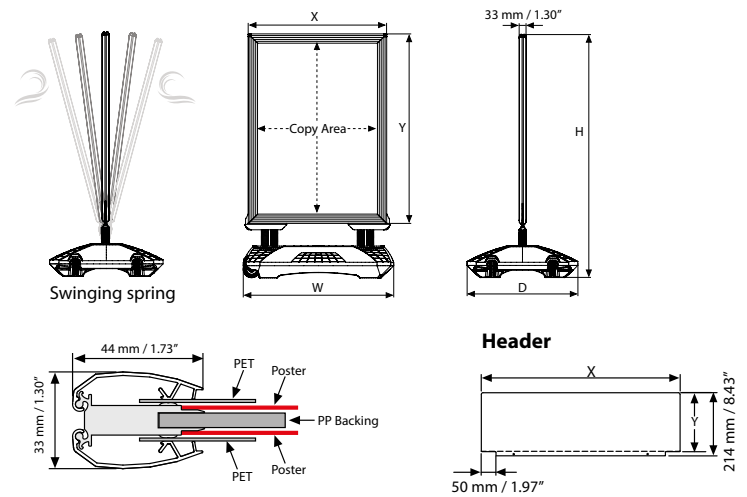
## FEATURES



## EXPLODED VIEW



## TECHNICAL DRAWING



## ARTICLES

FRAME					WEIGHT	PACKING SIZE
SILVER	BLACK	EXTERNAL (x-y)		POSTER	COPY	*W X H X D
USWPP00NA1	USWPP00BA1	671 X 918 mm	594 X 841 mm	582 X 829 mm		8,000 kg 705 X 1180 X 40 mm
USWPP00NA0	USWPP00BA0	918 X 1266 mm	841 X 1189 mm	829 X 1177 mm		12,000 kg 960 X 1545 X 40 mm
USWPP00NB1	USWPP00BB1	777 X 1077 mm	700 X 1000 mm	688 X 988 mm		10,200 kg 815 X 1320 X 40 mm
USWPP00NB2	USWPP00BB2	577 X 777 mm	500 X 700 mm	488 X 688 mm		6,800 kg 610 X 1020 X 40 mm
USWPP00N23	USWPP00B23	23.03" X 33.03"	20" X 30"	19.53" X 29.53"		17,526 lbs 24.21" X 43.31" X 1.57"
USWPP00N34	USWPP00B34	33.03" X 43.03"	30" X 40"	29.53" X 39.53"		24,912 lbs 34.45" X 53.15" X 1.57"
USWPP00N22	USWPP00B22	25.03" X 31.03"	22" X 28"	21.53" X 27.53"		17,526 lbs 26.18" X 40.55" X 1.57"
USWPP00N24	USWPP00B24	27.03" X 39.03"	24" X 36"	23.53" X 35.53"		19,731 lbs 27.95" X 48.82" X 1.57"
USWPP00NF0	USWPP00BF0	918 X 1398 mm	841 X 1321 mm	853 X 1333 mm		13,000 kg 880 X 1500 X 40 mm

NEWTECH WATERBASE: HLDPE							WEIGHT	PACKING SIZE
SILVER	BLACK	SIZE	FOR	H	W	D	WITH PACKING	*W X H X D
UTWM003000	UTWM003010	720 X 530 mm	20"X30"	42.87"	28.35"	20.87"	4,480 kg	555 X 750 X 178 mm
			22"X28"	40.87"	28.35"	20.87"		
			24"X36"	48.90"	28.35"	20.87"		
			B2	1027 mm	720 mm	530 mm		
			A1	1168 mm	720 mm	530 mm		
UTWM004000	UTWM004010	900 X 630 mm	30"X40"	52.87"	35.43"	24.80"	6,850 kg	605 X 930 X 178 mm
			B1	1327 mm	900 mm	630 mm		
			A0	1516 mm	900 mm	630 mm		
			F0	1242 mm	900 mm	630 mm		

## OPTIONAL ACCESSORIES



SwingPro® Plus & WindPro® Plus header (3 PVC Foam)

HEADER: 3 mm PVC Foam			WEIGHT
ARTICLE	SIZE	PRINTING AREA (x-y)	WITH PACKING
UYFT0050A1	594 X 841 mm	671 X 200 mm	2,640 kg
UYFT0050A0	841 X 1189 mm	918 X 200 mm	3,615 kg
UYFT0050B1	700 X 1000 mm	777 X 200 mm	3,060 kg
UYFT005022	500 X 700 mm	635 X 200 mm	2,500 kg
UYFT005023	20" X 30"	23.03" X 7.87"	0.507 lbs
UYFT005024	30" X 40"	33.03" X 7.87"	0.738 lbs
UYFT005034	22" X 28"	25" X 7.87"	0.551 lbs
UYFT005046	24" X 36"	27.05" X 7.87"	0.595 lbs
UYFT0050F0	F0	877 X 200 mm	3,500 kg



Optional carry tool.  
UYUP480945



T: +90 850 433 67 85 / info@mtdisplays.com / www.mtdisplays.com

# PHYSICAL DATA

## Material

44mm aluminium profile snap open swing master frame, PET anti-reflex poster cover, PP backing, steel profile base. Optional PVC Foam headers

## Poster Material & Thickness

0,10 – 0,20 mm with gasket/water wick for standard product. Max poster thickness is 2 mm for low density rigid posters such as PVC foam, PP, etc. Any non-standard poster thickness should be indicated with order.

## Surface Finish

Natural silver-anodized, black in standard and various RAL colors available with antimicrobial powder coating. Base standard in dark grey color or black, other colors are available upon request. Call for custom color requests.

## Recycled Content

For frame part up to 78% and for base part up to 40% recycled content used.

## Warranty

All products are guaranteed for 3 years by MT Displays with below conditions:  
[Warranty Conditions](#)

## Storage Conditions

Goods should be stored at 0° to 25°C in a dry place. Store in the original package.

## Installation Considerations

Base standard in dark grey color or black. Other colors are available upon request. Ground wheels in upside position enable easy movement of the product. Please note that if the frame of SwingPro Plus and WindPro Plus is required with a "HEADER" option, then the standard articles cannot be used, please contact our sales department for the articles with a header option. Do not forget to order carry tool. Please place the poster on stickers inside the water wick around the inner frame. Do not forget to order carry tool. Assembly in 60 seconds.

## Design Considerations

Double-sided Pavement Sign with swinging steel spring design for flexibility and stability. Patent protected WindPro Plus is heavy and robust pavement sign for OUTDOOR use with 2 main parts: frame and the base. Suitable for windy outdoor conditions and rainy conditions with a rubber seal around the frame for protecting the poster within. Suitable for 22"x28" (559x711 mm), 24"x36" (610x914 mm), 30"x40" (762x1016 mm),

20"x30" (508x762 mm), A0 (841x1189 mm), A1 (594x841 mm), B1 (700x1000 mm), B2 (500x700 mm) and F0 (800x1200 mm) poster sizes. Heavy waterbase provide stability.

## Cleaning and Disinfecting

Clean your displays, with damp microfiber clothes, rinsed with simply water or warm, soapy or gentle shampooed water. Avoid using vinegar, abrasive, acidic, alcohol-based or heavy cleaners or cleaners containing Ammonia. Only after cleaning the product, if needed, simply apply disinfectant or sanitizer that is in compliance with your local guidelines and regulations.

## Patent

OHIM DM/098 297, PCT/EP2018/060515

# PRINT TEMPLATES

## Windpro Plus - A1

Document Size: 604 x 851 mm (Includes Bleeds)  
Finished Size: A1 (594 x 841 mm) [Print](#)

## Windpro Plus - A0

Document Size: 851 x 1199 (Includes Bleeds)  
Finished Size: A0 (841 x 1189 mm) [Print](#)

## Windpro Plus - B2

Document Size: 510 x 710 (Includes Bleeds)  
Finished Size: B2 (500 x 700 mm) [Print](#)

## Windpro Plus - B1

Document Size: 710 x 1010 (Includes Bleeds)  
Finished Size: B1 (700 x 1000 mm) [Print](#)

## Windpro Plus - 20" x 30"

Document Size: 20.4" x 30.4" (Includes Bleeds)  
Finished Size: 20" x 30" (508 x 762 mm) [Print](#)

## Windpro Plus - 22" x 28"

Document Size: 22.4" x 28.4" (Includes Bleeds)  
Finished Size: 22" x 28" (558.8 x 711.2 mm) [Print](#)

## Windpro Plus - 24" x 36"

Document Size: 24.4" x 36.4" (Includes Bleeds)  
Finished Size: 24" x 36" (609,6 x 914,4 mm) [Print](#)

## Windpro Plus - 30" x 40"

Document Size: 30.4" x 40.4" (Includes Bleeds)  
Finished Size: 30" x 40" (762 x 1016 mm) [Print](#)

## Windpro Plus - F0

Document Size: 863 x 1343 (Includes Bleeds)  
Finished Size: 853 x 1333 mm [Print](#)

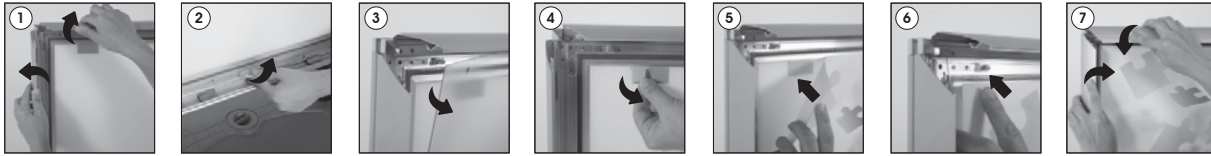




# INSTALLATION INSTRUCTIONS

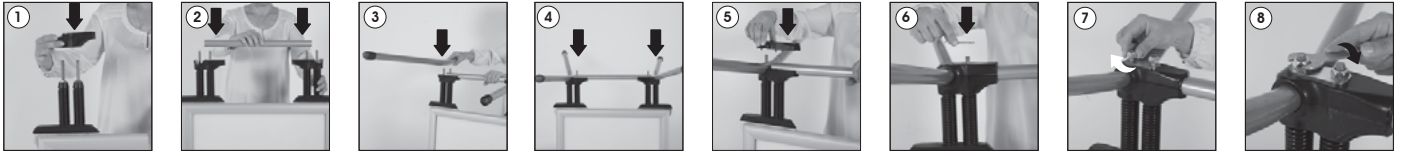
## WindPro® Plus / 1010214H000

### Poster Change

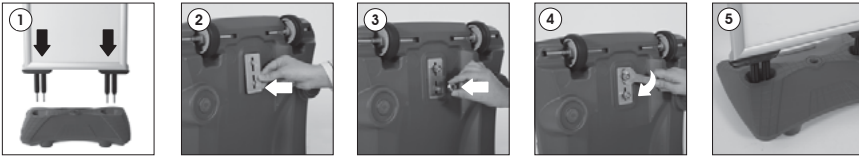


- Each product package includes for Frame**
- 1 x SwingPro Plus & WindPro Plus Frame
  - 2 x PET cover
  - 4 x Nut M10
  - 1 x 17 spanner

### SwingPro Plus Steel Base



### WindPro Plus Water Base



### Each product package includes for SwingPro Plus Steel Base

- 2 x SwingPro side feet
- 1 x Feet connection pipe
- 2 x Feet bracket top
- 2 x Feet bracket bottom
- 2 x Washer

### for WindPro Plus Water Base

- 1 x Water base
- 2 x Washer

- Please inform the order number on the product or on the carton (e.g. 1/110001394-460) to the place that you have made the purchase if any problem with the product occurs.
- All rights reserved. All pictures, figures and writings are secured internationally by copy-right law. Infringements will be sued by civil and legal law.



### WARNING!

- Please use the wrench enclosed and tighten carefully.
- When tighten too much, the base can breach.
- It is recommend to carry the product with the tool as shown (optional available), when the base is full with water.



This technical sheet's contents are all subject to update and modification at MT Displays' exclusive discretion. There is nothing official about this document. For final and legally binding information, please get in touch with the sales staff at MT Displays.



T: +90 850 433 67 85 / info@mtdisplays.com / www.mtdisplays.com