



BEST SELLER PAVEMENT SIGN IN THE WORLD!

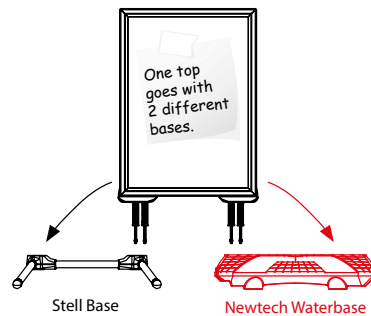
A new stunning look for Pavement Signs! It consists of 2 main articles, one of which serves the frame while the other supports the base of the product. It is practical to change the poster. It can be easily loaded, has no sharp edges and has steel springs for flexibility.

KEY SELECTION ATTRIBUTES

- * Double-sided Pavement Sign with swinging steel spring design for flexibility and stability.
- * Patent protected (OHIM DM/084 128) WindPro® is heavy and robust pavement sign for OUTDOOR use with 2 main parts: frame and the waterbase.
- * Suitable for outdoor conditions between -15°C/5°F to +50°C/122°F.
- * Weatherproof & Wind Resistant: Suitable for windy and rainy outdoor conditions, the water wick around the frame protects the poster within. Waterproof IP55.
- * Suitable for 20"x30", 30"x40", A0, A1, B1, B2 poster sizes.
- * One set includes a double sided snap open 40mm aluminium profile WindPro frame with 32mm depth and water wick around, round mitred corners for safety, 2 anti-reflex PET poster covers, 1 strong PP backing, 4 x M10 nuts, 1 x 17 spanner, and HDPE Newtech heavy water base with wheels and washers for installation.
- * The spring connectors stabilize the position of your poster. Heavy-duty coil resist strong winds and return the sign to an upright position.
- * Heavy waterbase provide stability. Ground wheels in upside position enable easy movement of the product.
- * Round corners guarantee maximum safety on the pavement.
- * Please place the poster inside the water wick around the inner frame. The gasket in frame provides high vacuuming to UV resistant poster protection to keep the poster dry.
- * Optional header accessories are available upon request, not included in standard set. If the frame of WindPro is required with a "HEADER" option, then the standard frames cannot be used, header enabled frames must be ordered. Please contact our sales department for the frames suitable for use with header.
- * It is recommend to carry the product with the tool as shown (optional available) , when the base is full with water.
- * Natural silver-anodized, black and wood effect in standard and various RAL colors available with antimicrobial powder coating. Base standard in dark grey color or black, other colors are available upon request.
- * Packed unassembled with an easy mounting instruction sheet & fixing set. Assembly in 60 seconds.
- * Please use the wrench enclosed and tighten carefully. If tightened too much, the base can breach.
- * One top goes with two different bases. Snap open frame can be used in combination with two different bases.



Black



Stell Base

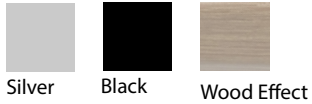
Newtech Waterbase



Silver

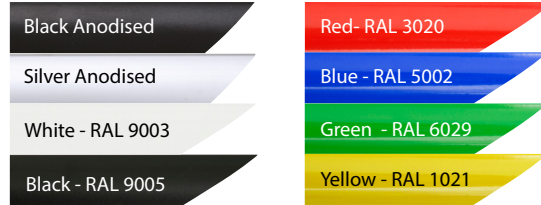


COLOURS IN STOCK



Silver Black Wood Effect

COLOUR OPTIONS



Black Anodised
Silver Anodised
White - RAL 9003
Black - RAL 9005
Red - RAL 3020
Blue - RAL 5002
Green - RAL 6029
Yellow - RAL 1021

SUITABLE FOR

WindPro® can be used for INDOOR and OUTDOOR applications, for signage needs in many locations like shopping centers, markets, groceries, hotels, offices airports, shops and stores, hospitals, schools, apartments and many more.

WATCH VIDEO



Watch video at our website
www.mtdisplays.com

FEATURES

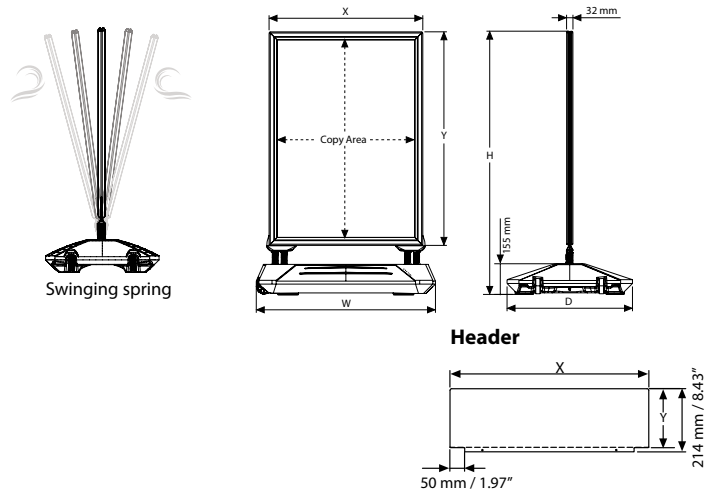


EXPLODED VIEW



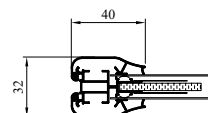
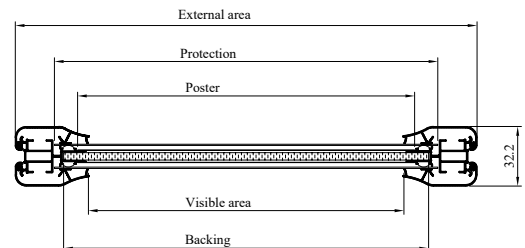
Optional carry tool.
UYUP480945

TECHNICAL DRAWING



ARTICLES

FRAME					WEIGHT	PACKING SIZE
SILVER	BLACK	EXTERNAL (x-y)	POSTER	COPY		
USWP010NA1	USWP010BA1	661 X 908 mm	594 X 841 mm	582 X 829 mm	7,100 kg	715 X 1190 X 47 mm
USWP010NA0	USWP010BA0	908 X 1256 mm	841 X 1189 mm	829 X 1177 mm	11,600 kg	970 X 1560 X 47 mm
USWP010NB2	USWP010BB2	567 X 767 mm	500 X 700 mm	488 X 688 mm	6,400 kg	615 X 1030 X 47 mm
USWP010NB1	USWP010BB1	767 X 1067 mm	700 X 1000 mm	688 X 988 mm	9,500 kg	825 X 1330 X 47 mm
USWP010N22	USWP010B22	626 X 779mm	559 X 712 mm	547 X 700 mm	6,800 kg	675 X 1040 X 47 mm
USWP010N24	USWP010B24	667 X 982 mm	610 X 915 mm	598 X 903 mm	7,900 kg	740 X 1260 X 47 mm
USWP010N23	USWP010B23	575 X 829 mm	508 X 762 mm	496 X 750 mm	6,700 kg	625 X 1110 X 47 mm
USWP010N34	USWP010B34	829 X 1083 mm	762 X 1016 mm	750 X 1004 mm	10,200 kg	885 X 1360 X 47 mm



FRAME					WEIGHT	PACKING SIZE
WOODL W/O CH	WOODL W CH	EXTERNAL (x-y)	POSTER	COPY		
USWP010WA1	USWP011WA1	661 X 908 mm	594 X 841 mm	582 X 829 mm	7,100 kg	715 X 1190 X 47 mm
USWP010WA0	USWP011WA0	908 X 1256 mm	841 X 1189 mm	829 X 1177 mm	11,600 kg	970 X 1560 X 47 mm
USWP010WB2	USWP011WB2	567 X 767 mm	500 X 700 mm	488 X 688 mm	6,400 kg	615 X 1030 X 47 mm
USWP010WB1	USWP011WB1	767 X 1067 mm	700 X 1000 mm	688 X 988 mm	9,500 kg	825 X 1330 X 47 mm
USWP010W22	USWP011W22	626 X 779mm	559 X 712 mm	547 X 700 mm	6,800 kg	675 X 1040 X 47 mm
USWP010W24	USWP011W24	667 X 982 mm	610 X 915 mm	598 X 903 mm	7,900 kg	740 X 1260 X 47 mm
USWP010W23	USWP011W23	575 X 829 mm	508 X 762 mm	496 X 750 mm	6,700 kg	625 X 1110 X 47 mm
USWP010W34	USWP011W34	829 X 1083 mm	762 X 1016 mm	750 X 1004 mm	10,200 kg	885 X 1360 X 47 mm



T: +90 850 433 67 85 / info@mtdisplays.com / www.mtdisplays.com

OPTIONAL ACCESSORIES



SwingPro® Plus & WindPro® Plus header (3 PVC Foam)

HEADER: 3 mm PVC Foam			WEIGHT
ARTICLE	SIZE	PRINTING AREA (x-y)	WITH PACKING
UYFT0050A1	594 X 841 mm	671 X 200 mm	2,640 kg
UYFT0050A0	841 X 1189 mm	918 X 200 mm	3,615 kg
UYFT0050B1	700 X 1000 mm	777 X 200 mm	3,060 kg
UYFT005022	500 X 700 mm	635 X 200 mm	2,500 kg
UYFT005023	20" X 30"	23.03" X 7.87"	0.507 lbs
UYFT005024	30" X 40"	33.03" X 7.87"	0.738 lbs
UYFT005034	22" X 28"	25" X 7.87"	0.551 lbs
UYFT005046	24" X 36"	27.05" X 7.87"	0.595 lbs

NEWTECH WATERBASE: HDPE							WEIGHT	PACKING SIZE
SILVER	BLACK	SIZE	FOR	H	W	D	WITH PACKING	*W X H X D
UTWM003000	UTWM003010	720 X 530 mm	20"X30"	42.87"	28.35"	20.87"	4,480 kg	555 X 750 X 178 mm
			22"X28"	40.87"	28.35"	20.87"		
			24"X36"	48.90"	28.35"	20.87"		
			B2	1027 mm	720 mm	530 mm		
UTWM004000	UTWM004010	900 X 630 mm	A1	1168 mm	720 mm	530 mm	6,850 kg	605 X 930 X 178 mm
			30"X40"	52.87"	35.43"	24.80"		
			B1	1327 mm	900 mm	630 mm		
			A0	1516 mm	900 mm	630 mm		

PHYSICAL DATA

Material

40mm aluminium profile snap open WindPro® frame, PET anti-reflex poster cover, PP backing, HDPE newtech base. Optional PVC Foam headers

Poster Material & Thickness

0,10 – 0,20 mm with gasket/water wick for standard product. Max poster thickness is 2 mm for low density rigid posters such as PVC foam, PP, etc. Any non-standard poster thickness should be indicated with order.

Surface Finish

Natural silver-anodized, black and wood effect in standard and various RAL colors available with antimicrobial powder coating. Base standard in dark grey color or black, other colors are available upon request. Call for custom color requests.

Recycled Content

For frame part up to 78% and for base part up to 40% recycled content used.

Warranty

All products are guaranteed for 2 Years by MT Displays with below conditions:
[Warranty Conditions](#)

Storage Conditions

Goods should be stored at 0° to 25°C in a dry place. Store in the original package.

Installation Considerations

WindPro is packed unassembled with an easy mounting instruction sheet & fixing set. Assembly

in 60 seconds. One set includes a double sided snap open 40mm aluminium profile WindPro frame with 32mm depth and water wick around, round mitred corners for safety, 2 anti-reflex PET poster covers, 1 strong PP backing, 4 x M10 nuts, 1 x 17 spanner, and HDPE Newtech heavy water base with wheels and washers for installation. Please place the poster inside the water wick around the inner frame.

The gasket in frame provides high vacuuming to UV resistant poster protection to keep the poster dry. Please use the wrench enclosed and tighten carefully. If tightened too much, the base can breach. Optional header accessories are available upon request, not included in standard set. If the frame of WindPro Plus is required with a "HEADER" option, then the standard frames cannot be used, header enabled frames must be ordered. Please contact our sales department for the frames suitable for use with header.

Design Considerations

Double-sided Pavement Sign with swinging steel spring design for flexibility and stability. Patent protected (OHIM DM/084 128) WindPro® is heavy and robust pavement sign for OUTDOOR use with 2 main parts: frame and the waterbase. Suitable for outdoor conditions between -15°C/5°F to +50°C/122°F. Weatherproof & Wind Resistant: Suitable for windy and rainy outdoor conditions, the water wick around the frame protects the poster within. Waterproof IP55. Suitable for 20"x30", 30"x40", A0, A1, B1, B2 poster sizes. Round corners guarantee maximum safety on the pavement. The spring connectors stabilize the position of your poster. Heavy-duty coil resist strong winds

and return the sign to an upright position. Heavy waterbase provide stability. Ground wheels in upside position enable easy movement of the product. It is recommend to carry the product with the tool as shown (optional available), when the base is full with water.

Cleaning and Disinfecting

Clean your displays, with damp microfiber clothes, rinsed with simply water or warm, soapy or gentle shampooed water. Avoid using vinegar, abrasive, acidic, alcohol-based or heavy cleaners or cleaners containing Ammonia. Only after cleaning the product, if needed, simply apply disinfectant or sanitizer that is in compliance with your local guidelines and regulations.

Hazardous Substances

M&T Displays prioritizes compliance with the REACH (Registration, Evaluation, Authorisation and Restriction of Chemicals) and RoHS (Restriction of Hazardous Substances) directives to protect both the environment and human health. We ensure that our products do not contain substances listed under REACH and adhere to strict RoHS limits for hazardous materials. Our manufacturing process ensures that lead, mercury, cadmium, and other restricted substances remain within the permitted thresholds, guaranteeing safe and sustainable products for our customers.

Patent

OHIM DM/084 128

PRINT TEMPLATES

Windpro - A1

Document Size: 604 x 851 mm (Includes Bleeds)
Finished Size: A1 (594 x 841 mm) [Print](#)

Windpro - A0

Document Size: 851 x 1199 (Includes Bleeds)
Finished Size: A0 (841 x 1189 mm) [Print](#)

Windpro - B2

Document Size: 510 x 710 (Includes Bleeds)
Finished Size: B2 (500 x 700 mm) [Print](#)

Windpro - B1

Document Size: 710 x 1010 (Includes Bleeds)
Finished Size: B1 (700 x 1000 mm) [Print](#)

Windpro - 20" x 30"

Document Size: 20.4" x 30.4" (Includes Bleeds)
Finished Size: 20" x 30" (508 x 762 mm) [Print](#)

Windpro - 30" x 40"

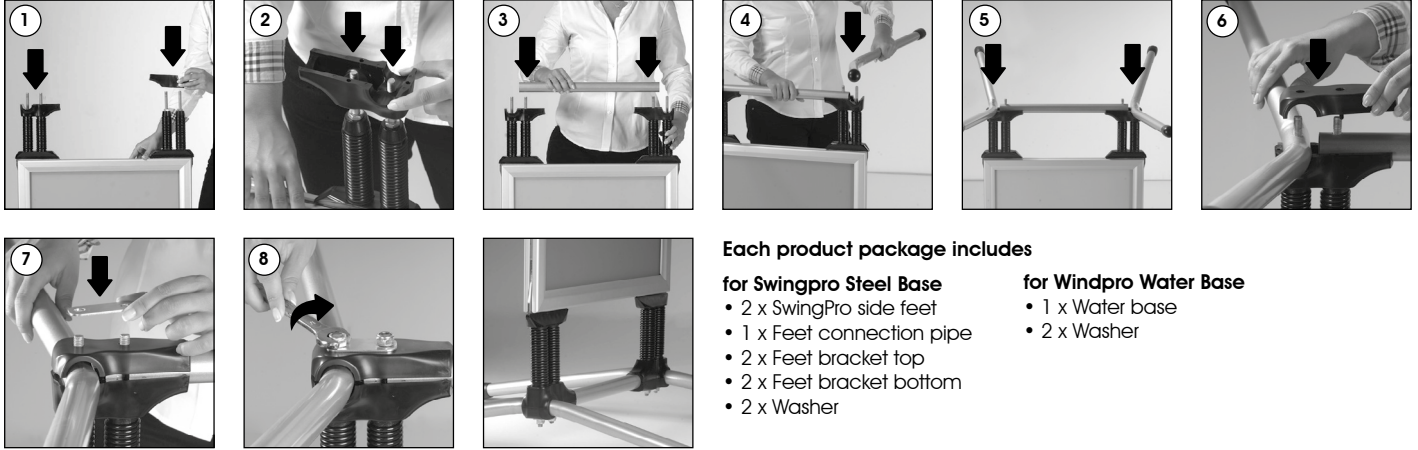
Document Size: 30.4" x 40.4" (Includes Bleeds)
Finished Size: 30" x 40" (762 x 1016 mm) [Print](#)



INSTALLATION INSTRUCTIONS

WindPro® / 1002045

SwingPro Steel base



Each product package includes

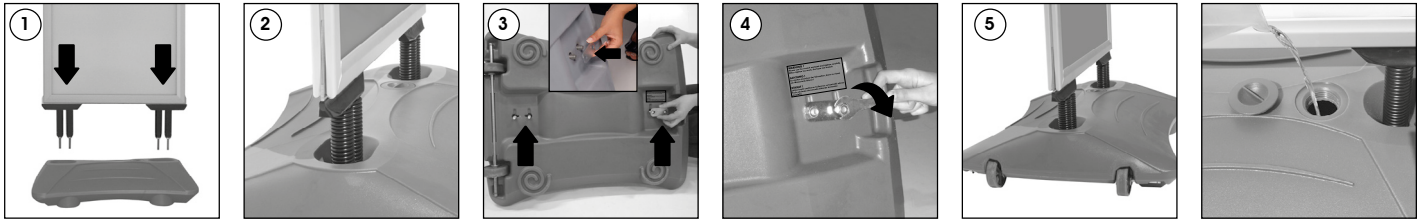
for Swingpro Steel Base

- 2 x SwingPro side feet
- 1 x Feet connection pipe
- 2 x Feet bracket top
- 2 x Feet bracket bottom
- 2 x Washer

for Windpro Water Base

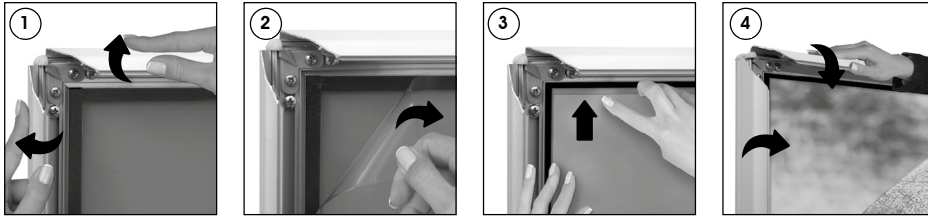
- 1 x Water base
- 2 x Washer

WindPro Waterbase



You can fill in the base by water & close the cover cap.

Poster Change



Each product package includes

for Frame

- 1 x SwingPro & WindPro Frame
- 2 x PET cover
- 4 x Nut M10
- 1 x 17 spanner



WARNING !

- Please use the wrench enclosed and tighten carefully. When tighten too much, the base can breach.
- It is recommend to carry the product with the tool as shown (optional available) , when the base is full with water.



- Please inform the order number on the product or on the carton (e.g. 1/110001394-460) to the place that you have made the purchase if any problem with the product occurs.
- Bitte teilen Sie bei jeglichen Problemen, die auf dem Artikel oder auf der Verpackung aufgeführte Auftragsnummer (z.B: 1/110001394-460) Ihrem Händler mit.
- Lütfen üründeki herhangi bir sorun için ürünü veya paketin üzerindeki sipariş numarasını (örnek: 1/110001394-460) satın aldığınız yere bildirin.
- All rights reserved. All pictures, figures and writings are secured internationally by copy-right law. Infringements will be sued by civil and legal law.
- Alle Rechte vorbehalten. Alle Bilder, Zeichnungen und Texte sind international urheberrechtlich geschützt. Etwaige Zuwiderhandlungen werden zivil- und strafrechtlich verfolgt.
- Tüm hakları saklıdır. Tüm resimlerin, şemaların ve yazıların kopya hakları uluslararası kanunlarla güvence altına alınmıştır. İhlali durumunda sivil ve hukuki yasa mercii tarafından dava edilecektir.

This technical sheet's contents are all subject to update and modification at MT Displays' exclusive discretion. There is nothing official about this document. For final and legally binding information, please get in touch with the sales staff at MT Displays.



T: +90 850 433 67 85 / info@mtdisplays.com / www.mtdisplays.com