

WINDPRO®



BEST SELLER PAVEMENT SIGN IN THE WORLD!

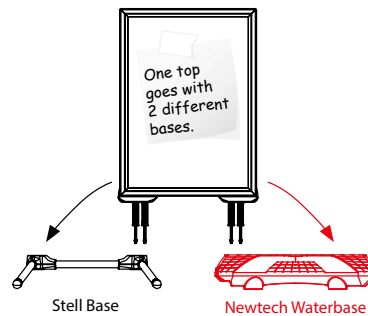
A new stunning look for Pavement Signs! It consists of 2 main articles, one of which serves the frame while the other supports the base of the product. It is practical to change the poster. It can be easily loaded, has no sharp edges and has steel springs for flexibility.

KEY SELECTION ATTRIBUTES

- * Double-sided Pavement Sign with swinging steel spring design for flexibility and stability.
- * Patent protected (OHIM DM/084 128) WindPro® is heavy and robust pavement sign for OUTDOOR use with 2 main parts: frame and the waterbase.
- * Suitable for outdoor conditions between -15°C/5°F to +50°C/122°F.
- * Weatherproof & Wind Resistant: Suitable for windy and rainy outdoor conditions, the water wick around the frame protects the poster within. Waterproof IP55.
- * Suitable for 20"x30", 30"x40", A0, A1, B1, B2 poster sizes.
- * One set includes a double sided snap open 40mm aluminium profile WindPro frame with 32mm depth and water wick around, round mitred corners for safety, 2 anti-reflex PET poster covers, 1 strong PP backing, 4 x M10 nuts, 1 x 17 spanner, and HDPE Newtech heavy water base with wheels and washers for installation.
- * The spring connectors stabilize the position of your poster. Heavy-duty coil resist strong winds and return the sign to an upright position.
- * Heavy waterbase provide stability. Ground wheels in upside position enable easy movement of the product.
- * Round corners guarantee maximum safety on the pavement.
- * Please place the poster inside the water wick around the inner frame. The gasket in frame provides high vacuuming to UV resistant poster protection to keep the poster dry.
- * Optional header accessories are available upon request, not included in standard set. If the frame of WindPro is required with a "HEADER" option, then the standard frames cannot be used, header enabled frames must be ordered. Please contact our sales department for the frames suitable for use with header.
- * It is recommend to carry the product with the tool as shown (optional available) , when the base is full with water.
- * Natural silver-anodized, black in standard and various RAL colors available with antimicrobial powder coating. Base standard in dark grey color or black, other colors are available upon request.
- * Packed unassembled with an easy mounting instruction sheet & fixing set. Assembly in 60 seconds.
- * Please use the wrench enclosed and tighten carefully. If tightened too much, the base can breach.
- * One top goes with two different bases. Snap open frame can be used in combination with two different bases.



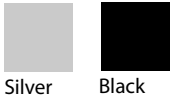
Black



Silver

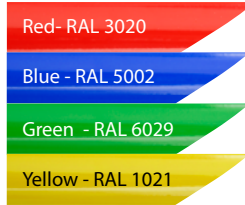
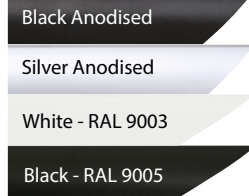


COLOURS IN STOCK



Silver Black

COLOUR OPTIONS



SUITABLE FOR

WindPro® can be used for INDOOR and OUTDOOR applications, for signage needs in many locations like shopping centers, markets, groceries, hotels, offices airports, shops and stores, hospitals, schools, apartments and many more.

WATCH VIDEO

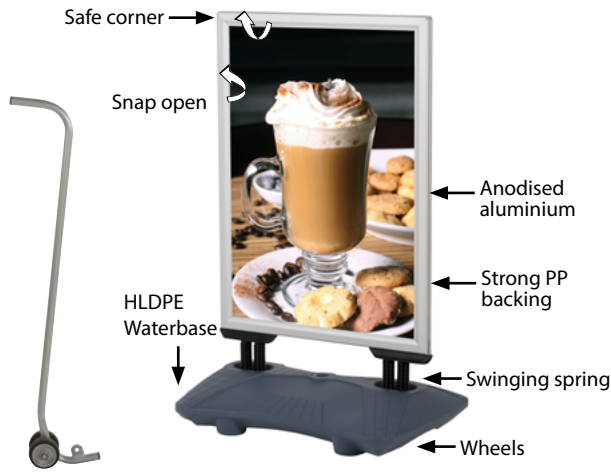


Watch video at our website
www.mtdisplays.com

FEATURES

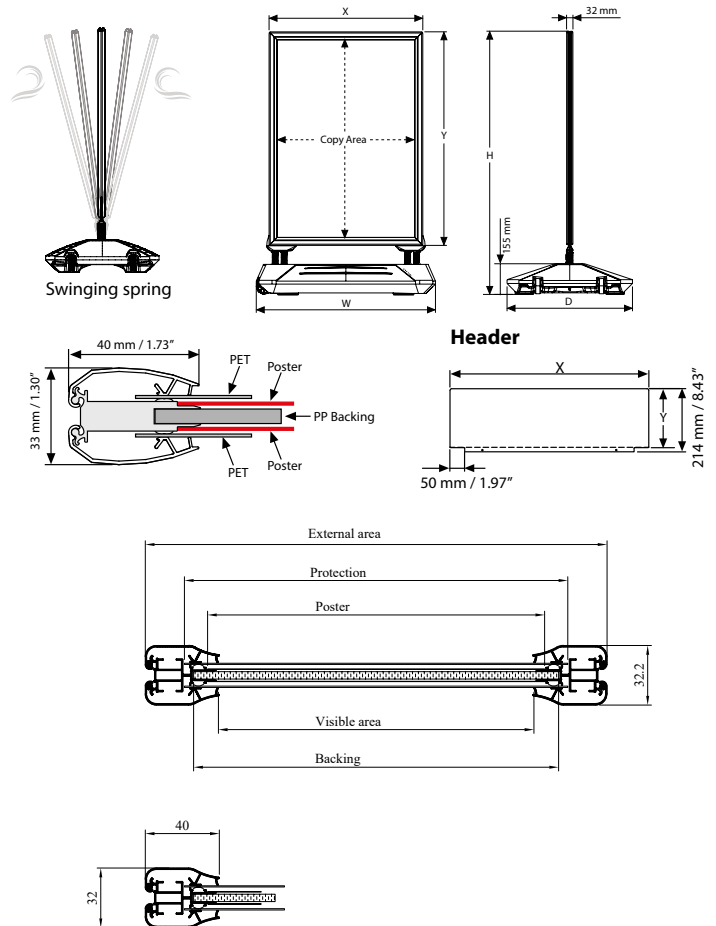


EXPLODED VIEW



Optional carry tool.
UYUP480945

TECHNICAL DRAWING



ARTICLES

FRAME					WEIGHT	PACKING SIZE
SILVER	BLACK	EXTERNAL (x-y)	POSTER	COPY		
USWP000NA1	USWP000BA1	666 X 913 mm	594 X 841 mm	586 X 833 mm	7,800 kg	715 X 1180 X 47 mm
USWP000NA0	USWP000BA0	913 X 1261 mm	841 X 1189 mm	833 X 1181 mm	11,400 kg	970 X 1600 X 47 mm
USWP000NB2	USWP000BB2	572 X 772 mm	500 X 700 mm	492 X 692 mm	7,200 kg	610 X 1040 X 47 mm
USWP000NB1	USWP000BB1	772 X 1072 mm	700 X 1000 mm	692 X 992 mm	10,500 kg	820 X 1340 X 47 mm
USWP000N23	USWP000B23	580 X 834 mm	508 X 762 mm	500 X 754 mm	7,500 kg	620 X 1130 X 47 mm
USWP000N34	USWP000B34	834 X 1088 mm	762 X 1016 mm	754 X 1008 mm	11,360 kg	880 X 1380 X 47 mm

OPTIONAL ACCESSORIES



SwingPro® Plus & WindPro®
Plus header (3 PVC Foam)

HEADER: 3 mm PVC Foam				WEIGHT
ARTICLE	SIZE	PRINTING AREA (x-y)	WITH PACKING	
UYFT0050A1	594 X 841 mm	671 X 200 mm	2,640 kg	
UYFT0050A0	841 X 1189 mm	918 X 200 mm	3,615 kg	
UYFT0050B1	700 X 1000 mm	777 X 200 mm	3,060 kg	
UYFT005022	500 X 700 mm	635 X 200 mm	2,500 kg	
UYFT005023	20" X 30"	23.03" X 7.87"	0.507 lbs	
UYFT005024	30" X 40"	33.03" X 7.87"	0.738 lbs	
UYFT005034	22" X 28"	25" X 7.87"	0.551 lbs	
UYFT005046	24" X 36"	27.05" X 7.87"	0.595 lbs	

NEWTECH WATERBASE: HDPE								WEIGHT	PACKING SIZE
SILVER	BLACK	SIZE	FOR	H	W	D			
UTWM003000	UTWM003010	720 X 530 mm	20"X30"	42.87"	28.35"	20.87"	4,480 kg	555 X 750 X 178 mm	
			22"X28"	40.87"	28.35"	20.87"			
			24"X36"	48.90"	28.35"	20.87"			
			B2	1027 mm	720 mm	530 mm			
UTWM004000	UTWM004010	900 X 630 mm	A1	1168 mm	720 mm	530 mm	6,850 kg	605 X 930 X 178 mm	
			B1	1327 mm	900 mm	630 mm			
			A0	1516 mm	900 mm	630 mm			



T: +90 850 433 67 85 / info@mtdisplays.com / www.mtdisplays.com

PHYSICAL DATA

Material

40mm aluminium profile snap open WindPro® frame, PET anti-reflex poster cover, PP backing, HDPE newtech base. Optional PVC Foam headers

Poster Material & Thickness

0,10 – 0,20 mm with gasket/water wick for standard product. Max poster thickness is 2 mm for low density rigid posters such as PVC foam, PP, etc. Any non-standard poster thickness should be indicated with order.

Surface Finish

Natural silver-anodized, black in standard and various RAL colors available with antimicrobial powder coating. Base standard in dark grey color or black, other colors are available upon request. Call for custom color requests.

Recycled Content

For frame part up to 78% and for base part up to 40% recycled content used.

Warranty

All products are guaranteed for 2 Years by MT Displays with below conditions:
[Warranty Conditions](#)

Storage Conditions

Goods should be stored at 0° to 25°C in a dry place. Store in the original package.

Installation Considerations

WindPro is packed unassembled with an easy mounting instruction sheet & fixing set. Assembly in 60 seconds. One set includes a double sided snap open 40mm aluminium profile WindPro frame with 32mm depth and water wick around, round mitred corners for safety, 2 anti-reflex PET poster covers, 1 strong PP backing, 4 x M10 nuts, 1 x 17 spanner, and HDPE Newtech heavy water base with wheels and washers for installation. Please place the poster inside the water wick around the inner frame. The gasket in frame provides high vacuuming to UV resistant poster protection to keep the poster dry. Please use the wrench enclosed and tighten carefully. If tightened too much, the base can breach. Optional header accessories are available upon request, not included in standard set. If the frame of WindPro Plus is required with a "HEADER" option, then the standard frames cannot be used, header enabled frames must be ordered. Please contact our sales department for the frames suitable for use with header.

Design Considerations

Double-sided Pavement Sign with swinging steel spring design for flexibility and stability. Patent protected (OHIM DM/084 128) WindPro® is heavy and robust pavement sign for OUTDOOR use with 2 main parts: frame and the waterbase. Suitable for outdoor conditions between -15°C/5°F to +50°C/122°F. Weatherproof & Wind Resistant:

Suitable for windy and rainy outdoor conditions, the water wick around the frame protects the poster within. Waterproof IP55. Suitable for 20"x30", 30"x40", A0, A1, B1, B2 poster sizes. Round corners guarantee maximum safety on the pavement. The spring connectors stabilize the position of your poster. Heavy-duty coil resist strong winds and return the sign to an upright position. Heavy waterbase provide stability. Ground wheels in upside position enable easy movement of the product. It is recommend to carry the product with the tool as shown (optional available), when the base is full with water.

Cleaning and Disinfecting

Clean your displays, with damp microfiber clothes, rinsed with simply water or warm, soapy or gentle shampooed water. Avoid using vinegar, abrasive, acidic, alcohol-based or heavy cleaners or cleaners containing Ammonia. Only after cleaning the product, if needed, simply apply disinfectant or sanitizer that is in compliance with your local guidelines and regulations.

Patent

OHIM DM/084 128

PRINT TEMPLATES

Windpro - A1

Document Size: 604 x 851 mm (Includes Bleeds)
Finished Size: A1 (594 x 841 mm) [Print](#)

Windpro - A0

Document Size: 851 x 1199 (Includes Bleeds)
Finished Size: A0 (841 x 1189 mm) [Print](#)

Windpro - B2

Document Size: 510 x 710 (Includes Bleeds)
Finished Size: B2 (500 x 700 mm) [Print](#)

Windpro - B1

Document Size: 710 x 1010 (Includes Bleeds)
Finished Size: B1 (700 x 1000 mm) [Print](#)

Windpro - 20" x 30"

Document Size: 20.4" x 30.4" (Includes Bleeds)
Finished Size: 20" x 30" (508 x 762 mm) [Print](#)

Windpro - 30" x 40"

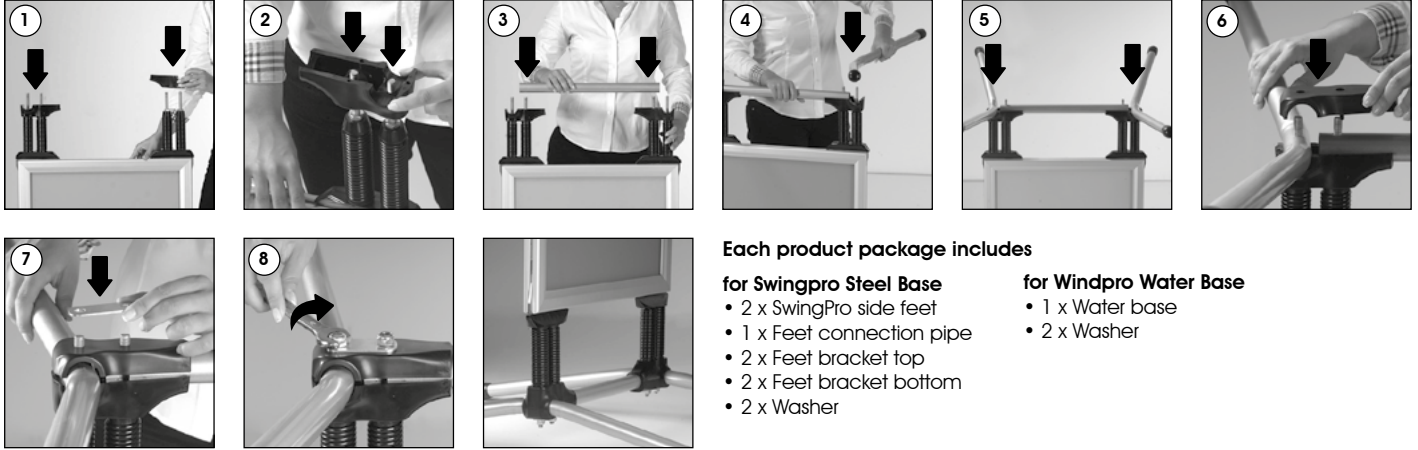
Document Size: 30.4" x 40.4" (Includes Bleeds)
Finished Size: 30" x 40" (762 x 1016 mm) [Print](#)



INSTALLATION INSTRUCTIONS

WindPro® / 1002045

SwingPro Steel base



Each product package includes

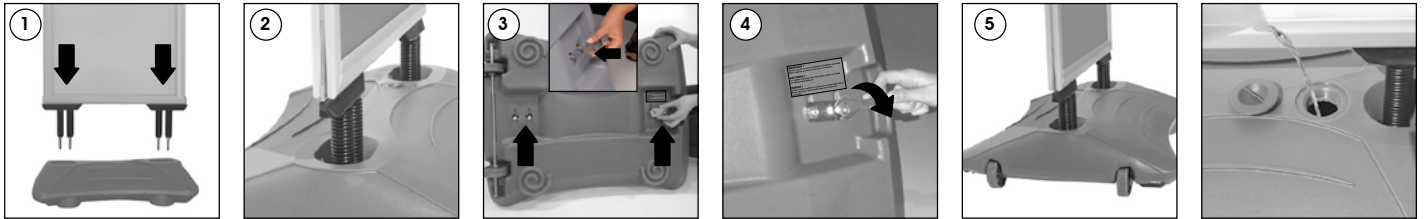
for Swingpro Steel Base

- 2 x SwingPro side feet
- 1 x Feet connection pipe
- 2 x Feet bracket top
- 2 x Feet bracket bottom
- 2 x Washer

for Windpro Water Base

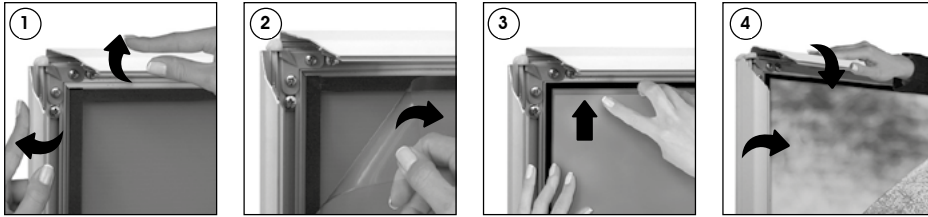
- 1 x Water base
- 2 x Washer

WindPro Waterbase



You can fill in the base by water & close the cover cap.

Poster Change



Each product package includes

for Frame

- 1 x SwingPro & WindPro Frame
- 2 x PET cover
- 4 x Nut M10
- 1 x 17 spanner



WARNING !

- Please use the wrench enclosed and tighten carefully. When tighten too much, the base can breach.
- It is recommend to carry the product with the tool as shown (optional available) , when the base is full with water.



- Please inform the order number on the product or on the carton (e.g. 1/110001394-460) to the place that you have made the purchase if any problem with the product occurs.
- Bitte teilen Sie bei jeglichen Problemen, die auf dem Artikel oder auf der Verpackung aufgeführte Auftragsnummer (z.B. 1/110001394-460) Ihrem Händler mit.
- Lütfen ürünlerdeki herhangi bir sorun için ürünün veya paketin üzerindeki sipariş numarasını (örnek: 1/110001394-460) satın aldığınız yere bildirin.
- All rights reserved. All pictures, figures and writings are secured internationally by copy-right law. Infringements will be sued by civil and legal law.
- Alle Rechte vorbehalten. Alle Bilder, Zeichnungen und Texte sind international urheberrechtlich geschützt. Etwaige Zuwiderhandlungen werden zivil- und strafrechtlich verfolgt.
- Tüm hakları saklıdır. Tüm resimlerin, şemaların ve yazıların kopya hakları uluslararası kanunlarla güvence altına alınmıştır. İhlali durumunda sivil ve hukuki yasa mercii tarafından dava edilecektir.

This technical sheet's contents are all subject to update and modification at MT Displays' exclusive discretion. There is nothing official about this document. For final and legally binding information, please get in touch with the sales staff at MT Displays.



T: +90 850 433 67 85 / info@mtdisplays.com / www.mtdisplays.com