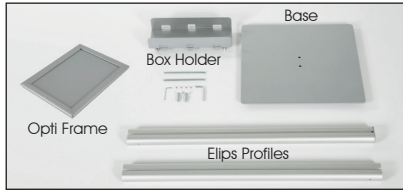


Installation Instructions

(1011629H000)

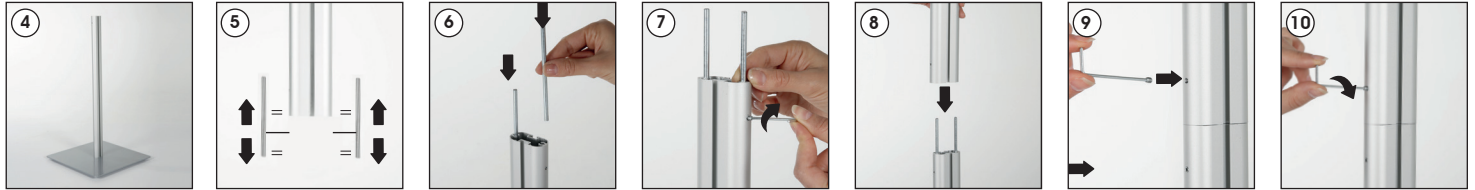
FLOOR STAND FOR HEALTHCARE DISPENSERS IN BOX WITH OPTI FRAME

Floor Stand Pole

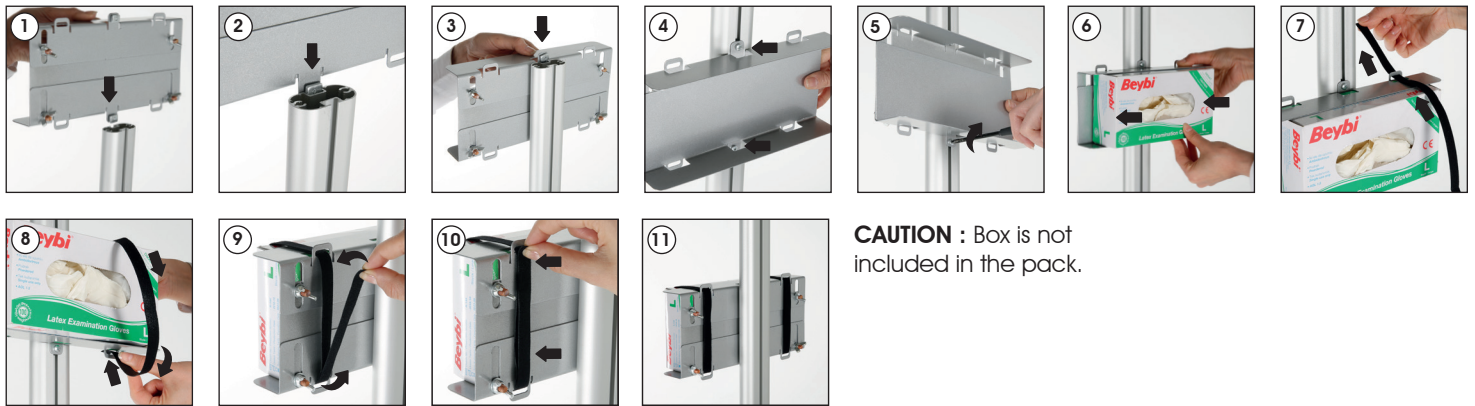


Each product includes

- 1 x Opti Frame
- 1 x Box holder
- 1 x Base
- 2 x Elips profile
- 2 x Textile velcro strips, 500 mm
- 4 x Bolt Setskur M4x4
- 2 x Bolt Imbus M6x25
- 2 x Shaft Ø5x120 mm
- 1 x 5 Allen key
- 1 x 2 Allen key

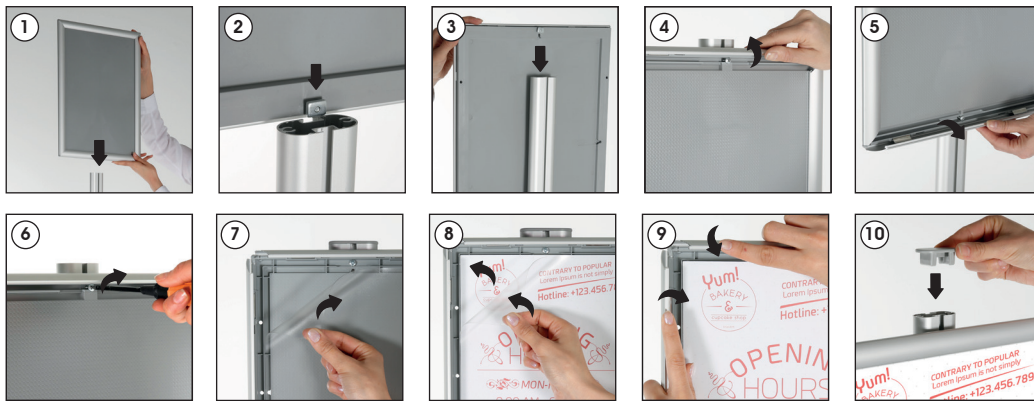


Floor Stand Box Holder

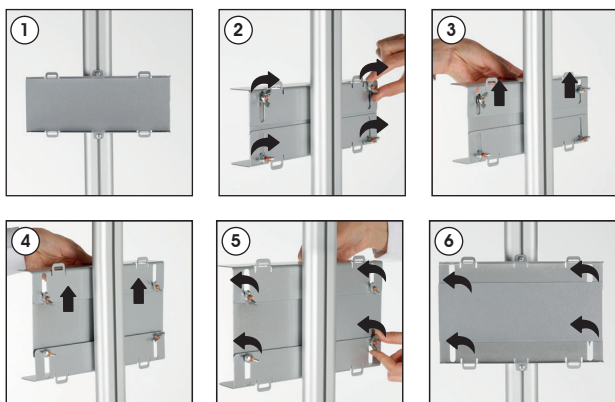


CAUTION : Box is not included in the pack.

Floor Stand Opti Frame



Adjusting the height of the Box Holder



- Please inform the order number on the product or on the carton (e.g. 1/110001394-460) to the place that you have made the purchase if any problem with the product occurs.
- Bitte teilen Sie bei jeglichen Problemen, die auf dem Artikel oder auf der Verpackung aufgeführte Auftragsnummer (z.B. 1/110001394-460) Ihrem Händler mit.
- Lütfen üründeki herhangi bir sorun için ürünün veya paketin üzerindeki sipariş numarasını (örnek: 1/110001394-460) satın aldığınız yere bildiriniz.
- All rights reserved. All pictures, figures and writings are secured internationally by copy-right law. Infringements will be sued by civil and legal law.
- Alle Rechte vorbehalten. Alle Bilder, Zeichnungen und Texte sind international urheberrechtlich geschützt. Etwaige Zuwiderhandlungen werden zivil- und strafrechtlich verfolgt.
- Tüm hakları saklıdır. Tüm resimlerin, şemaların ve yazıların kopya hakları uluslararası kanunlarla güvence altına alınmıştır. İhlali durumunda sivil ve hukuki yasa mercii tarafından dava edilecektir.

