



Let's Shape the
Future
Together

SUSTAINABILITY REPORT
Q2 2026



Contents

About MT Displays

Our Brand Values

MT Displays' Commitment for Sustainability

Our Sustainability Roadmap and Strategies

Renewable Energy

Environmental Initiatives

Our Waste Management System

Our Spare Parts Program

Eco Friendly Packaging Project

Green Deal

Our Corporate Governance

Health and Safety Initiatives

Social Responsibility Initiatives

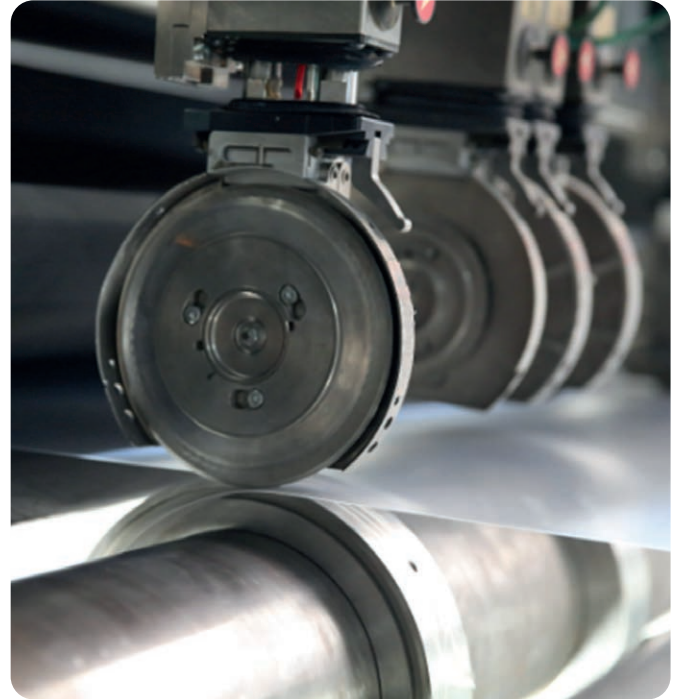
Call to Action



About Us

About MT Displays

For our partners in Display and Sign Advertising Industry, MT Displays is the world's leading display units manufacturing company that offers not only full range and high quality products but also custom solutions with product design and development, technical consultancy ability and marketing tools support, so that our partners have full confidence on their businesses, because MT Displays has shown extreme willingness for making innovation to lead and reshape the market since its establishment in 1993.



As a multinational group of companies with 3 production Facilities and Warehouses based in Turkey, manufacturing 20.000 unique SKU for Display Products and 26 different Product Groups, we serve the market with 2 large product distribution Branches and Warehouses in EU and US, and a world-wide Export Team with more than 30 years of experience, making sales & marketing activities, giving service to our Distributors in 6 Continents, over 84 Countries.



Our Vision

is to be the “GLOBAL LEADER” in the world markets, settling the standards, reshaping the markets with our innovative designs and custom solutions.



Our Mission

is to be a “RELIABLE BUSINESS PARTNER” for our customers by giving technical consultancy and marketing tools support as well as producing distinctive solutions for them.



The uniqueness of MT Displays comes from our ability to create innovative design solutions to fulfill evolving demands via agile approach in the global markets, and ability to use very high technology and automated production lines for mass production. Many of our ingenious designs result in design protection and patent. Today MT Displays has around 30 patent protected products in the range and has 3 international trademarks registered on WIPO. This power enables us to lead the market and shape the trends in the last 32 years.

We Shape the Future with Our Brand Values

Following the completion of our sustainability-oriented investments by the end of 2025, we have implemented additional improvements to our production facilities, including automated mass production lines, efficiency-driven manufacturing processes, waste reduction initiatives, and an enhanced recycling management system.

At MT Displays, we uphold values of reliability, flexibility, innovation, and sustainability. These values underpin our commitment to sustainable practices and ethical business conduct.

1 Reliable
We are committed to providing products and services that our customers can depend on. Our customers can trust us to deliver consistent and high-quality solutions.

2 Agile
At MT Displays, we pride ourselves on our agility, swiftly adapting to market dynamics and embracing change to deliver innovative solutions that exceed customer expectations.

3 Innovative
We are at the forefront of technological advancements, constantly pushing the boundaries of what’s possible to meet the demands of our customers and the environment.

4 Sustainable
We prioritize sustainability in every aspect of our operations, ensuring a better future for generations to come.

MT Displays' Sustainability Commitment

At MT Displays, we are fully committed to sustainable practices that not only benefit our organization but also recognize the importance of minimizing our environmental impact, promoting social responsibility, and contributing to the well-being of our community. Our comprehensive sustainability plan drives us to continually improve and implement innovative solutions.



Environmental Impact Reduction

We actively work to minimize our environmental footprint through sustainable practices and continuous improvement.

Community Development

We prioritize community well-being by engaging in projects that benefit local environments and societies.

Our Sustainability Roadmap and Strategies

Our sustainability roadmap integrates a range of strategies to ensure that we minimize our impact on the environment while maximizing positive contributions to our community, in line with Sustainable Development Goals of United Nations.



Sustainable Operations





We implement eco-friendly processes to reduce waste and conserve resources.

Community Engagement

We actively engage with our local community to contribute to collective environmental efforts and social welfare projects.

MT Displays' Sustainability Strategy

RELATED GOALS	MAIN STRATEGIES	COMPANY'S SUSTAINABILITY TARGETS FOR 2025 - 2026	TIMING
	Customer Satisfaction	Raising the bar as a leader in product and service quality - ISO 9001 certified quality management system	Completed ✓
	R&D	Increasing economic growth through technological innovations, improvement and innovation	Completed ✓
	Innovation	Increasing R&D investment	2026
	Digitalization	Ensuring the security of all transactions and data in the field of information technologies - ISO 27001, international standard for information security	Completed ✓
	Continuity of Business	Realizing new investments within the framework of sustainability principles	Completed ✓
		Increasing resource efficiency and using clean and environmentally friendly technologies and processes for sustainable development	Completed ✓
		Being ready for disasters and emergencies - ISO 22301 Security and Resilience, Business Continuity Management Systems Certification	2027
	Corporate Sustainability Management	Adopting sustainability practices and reporting sustainability performance	2026
	Sustainable Supply Chain	Defining standards for reducing harmful effects on the environment to be applied in all supplier audits	Completed ✓

RELATED GOALS	MAIN STRATEGIES	ENVIRONMENTAL SUSTAINABILITY TARGETS FOR 2025 - 2026	TIMING
	Circular Economy	To ensure sustainable management and efficient use of natural resources - FSC Forest Management Systems Certification	2026
		Minimizing the negative effects of waste on the environment/ reducing waste generation through reduction, recycling and reuse	Completed ✓
		Reducing water intensity by 15% on a production basis	2026
		Increasing the amount of water recycled and reused by 35%	2026
		Reduce energy intensity by 5% on a production basis - ISO 50001 Energy Management Systems & ISO 14001, Standard for Environmental Management Systems	Completed ✓
		Increasing the ratio of electricity production from renewable energy sources to meeting consumption - I-REC International Renewable Energy Certification	Completed ✓
	Fight Climate Change	Increasing resilience and adaptation to climate-related hazards and natural disasters - ISO 14067 Product Carbon Footprint Verification, ISO 14064, International Standard for GHG Emissions Inventories and Verification	2026 - 2027
		Increasing efforts to reduce the negative effects of sustainable development and climate change and carrying out information/ awareness activities	2026 - 2027

RELATED GOALS	MAIN STRATEGIES	SUSTAINABILITY OF EMPLOYEES & SOCIETY TARGETS FOR 2025 - 2026	TIMING	
	Occupational Health and Safety	Continuing to ensure OSH in workplaces at international standards - ISO 45001 Occupational Health and Safety Management Systems	Completed ✓	
		Employee Welfare Programs & Emergency Response Training	2027	
	Employee Engagement and Satisfaction	Ensuring inclusive and participatory decision-making at all levels	2026 - 2027	
		Employee Development and Talent Management	Ensuring all employees have access to quality technical and vocational training	2026 - 2027
			Increasing the number of workers of all ages with technical and professional skills	2026 - 2027
Increasing employment and employee training	2026 - 2027			
	Gender and Equality of Opportunity	Ensuring the full and effective participation of women in decision-making processes, increasing the number of senior female managers by 30%	Completed ✓	
		Ensuring equality between men and women in employment and employee income, increasing the number of female employees in skilled labor positions by 20%	2026 - 2027	
		Ensuring equal opportunities and increasing the proportion of women in new white-collar recruitment by 20%	Completed ✓	
	Business Ethics	Maintaining accountability and transparency at all levels - SEDEX Supplier Ethical Data Exchange	2027	
	Social Responsibility	Increasing employee participation in social responsibility activities	2026 - 2027	
Reaching disadvantaged children within the scope of social responsibility projects		2026 - 2027		

Renewable Energy



Renewable energy is energy derived from natural sources that are replenished at a higher rate than they are consumed. Sunlight and wind, for example, are such sources that are constantly being replenished. Renewable energy sources are plentiful and all around us.

All renewable energy sources like **solar, wind, geothermal, hydropower, wave and tidal power** are forms of sustainable energy.

These energy sources have been here for centuries and are here to stay till life is available on earth.



Production Device Details

Device	Country of Origin	Energy Source	Technology	Supported	Commissioning Date	Carbon (CO2/MWh)
Kulp I HES	Turkey	Hydro-electric	Run of River	No	04.03.2011	0.000000



This Redemption Statement has been produced for

M.T REKLAM ANONİM ŞİRKETİ

by

SEPAŞ AKILLI ÇÖZÜMLER A.Ş.

confirming the Redemption of

3 500.000000

I-REC Certificates, representing 3 500.000000 MWh of electricity generated from renewable sources

This Statement relates to electricity consumption located at or in

CUMHURİYET MAH. SELİN SOK. NO.1 ÇAYIROVA/KOCAELİ
Turkey

in respect of the reporting period

2025-01-01 to 2025-12-31

The stated Redemption Purpose is

'Scope 2 Reporting'

sepaş **AKILLI**
ÇÖZÜMLER

Ev.

Fossil fuels – coal, oil and gas – on the other hand, are non-renewable resources that take hundreds of millions of years to form. Fossil fuels, when burned to produce energy, cause harmful greenhouse gas emissions, such as carbon dioxide. Generating renewable energy creates far lower emissions than burning fossil fuels. Transitioning from fossil fuels to renewable energy is key to addressing the climate crisis.

I - REC Certification

As part of our commitment to protecting the environment, we started consuming renewable energy in **2022**. Ever since, MT Displays receives a new **I-REC International Renewable Energy Certification** for each year. This certificate represents **3,500 MWh** of **electricity produced from renewable sources** for the year **2025**, specifically for electricity consumed from Kiyikoy wind-farm energy sources.



QR Code Verification

Verify the status of this Redemption Statement by scanning the QR code on the left and entering in the Verification Key below

Verification Key

3 1 5 5 0 2 0 8

<https://api-internal.evident.app/public/certificates/en/p7k5mm8cMT7oPEp59%2B9cBnRTNuuHLsw3Ozp7ovtq8WwzCBu4HsD9z2BcgWL9AXLwuo>

Saving on Water Usage



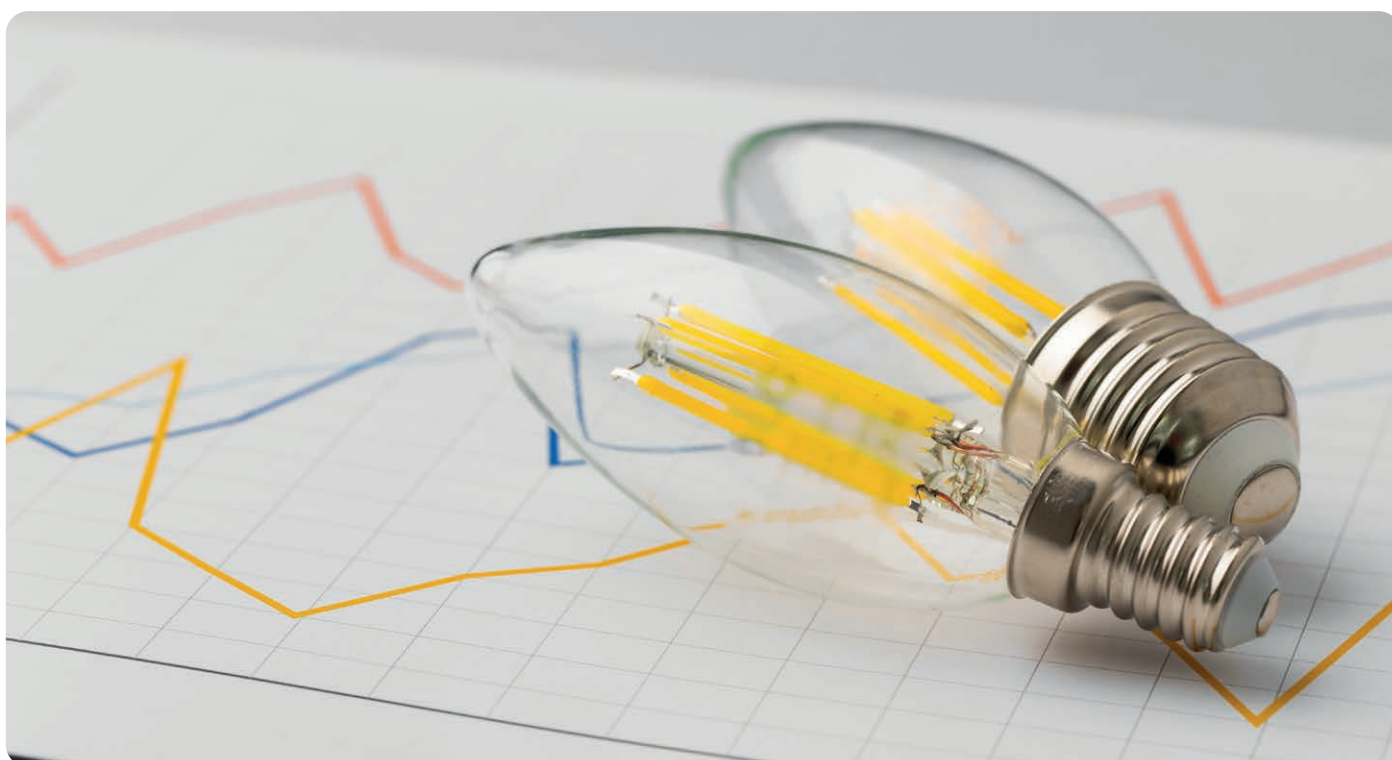
We will be enhancing our production procedures, resulting in a **10% reduction** in water usage by the end of **2026**, reflecting our ongoing commitment to sustainable practices



Reducing Energy Consumption



Another significant advancement in our production procedures, leading to a remarkable **25% reduction** in energy consumption by the end of **2026**, underscoring our dedication to environmental stewardship.



Environmental Initiatives

MT Displays engages in various environmental initiatives aimed at conserving natural resources and protecting biodiversity.



Tree Planting

We actively participate in tree planting programs to contribute to reforestation and carbon sequestration efforts.

Eco-Friendly Packaging

We have implemented sustainable packaging practices to reduce waste and minimize our environmental impact.

Biodiversity Protection

We support initiatives aimed at protecting and preserving diverse ecosystems and wildlife habitats.



Our Pathway for FSC Forest Management

MT Displays runs a project for completing standards of FSC (Forest Stewardship Council), Forest Management Systems Certification by the end of **2027** with a team of professionals.

Sustainable Sourcing Commitment

Our company is steadfast in its 'Sustainable Sourcing Commitment,' actively pursuing Forest Stewardship Council (FSC) certification to ensure responsible and environmentally-friendly practices in our supply chain.

Towards FSC Certification

As part of our dedication to environmental stewardship, we are working 'Towards FSC Certification,' a testament to our commitment to sustainable forestry management and the promotion of responsible wood and paper products in the market.





Our Waste Management System



Rapid manufacturing lines combined with scaling capabilities provide a customer-size-specific solution. Our major priority is quality. Our **ISO 9001** certified quality management system supports this level of international standards.

Our plant integrates technology with nature, focusing on energy efficiency, waste management, and recycling. We are committed not only to providing the best of quality, but also to preserving nature and the environment.

MT Displays' products inherently "green" in its form, are also produced in our environment-friendly factories, meeting the international environmental management standards. Running systematic controls in its production, all features of our production create little or no negative impact on nature.

The recycling cycle is aided by the residual materials being sorted by type like PET, GPPS, aluminum or metal. The recycling cycle is completed when sold plastics are returned, guaranteeing the sustainable use of raw materials. Waste and residual materials are recycled by licensed disposal firms. Materials from third parties are not accepted.

- 1 We take care to use non-toxic and non-polluting raw materials for eliminating toxic gas-releasing or hazardous decomposition products. ✓
- 2 We design our production methods to minimize waste from raw materials. ✓
- 3 We use natural and renewable resources to ensure disposal in an environmentally appropriate manner. ✓
- 4 We always gather the largest feasible packing units saves packaging material and lowers emissions. ✓



MT Displays undertakes to function in all its pursuits in order to remove or minimize the safety and environmental hazards for its employees, contractors, customers and the general public.



Our Spare Parts Program



Comprehensive Range of Accessories and Spare Parts

One of the key aspects of our sustainability strategy is our Spare Parts Program, which provides a comprehensive range of accessories and spare parts for our products. This approach allows our customers to easily fix and upgrade their displays, ensuring a longer lifespan and significantly reducing waste. By making maintenance straightforward and accessible, we are fostering a culture of reuse and sustainability among our customers.

Extending Product Life

By empowering our customers to maintain and enhance their products through our Spare Parts Program, we're not just extending the life of each display—we're making a positive impact on our planet. Each product that is repaired and reused is one less item that ends up in a landfill. This not only reduces environmental harm but also conserves the resources and energy that would have been used to manufacture new products.

Positive Environmental Impact

Our dedication to sustainability extends beyond product longevity. We continually strive to incorporate eco-friendly practices in our operations, from energy-efficient manufacturing processes to sustainable sourcing of materials. We are proud to be part of a global movement that prioritizes the health of our planet for future generations.



At MT Displays, our Spare Parts Program and overall sustainability efforts are a testament to our belief that business success and environmental stewardship can go hand in hand.

Together with our customers, we are building a greener future, one product at a time.

By embracing these principles and actively promoting product longevity and waste reduction, MT Displays is making a significant contribution to environmental sustainability. We are committed to continuous improvement and innovation in our quest for a sustainable future.





Our Eco Friendly Packaging Project



We are embarking on an exciting project to transition to eco-friendly packaging for our products.

As a company committed to sustainability, we understand the importance of minimizing our environmental footprint.

That's why we're proud to share that not only are our products inherently "green" in their design, but they are also manufactured in our environmentally-friendly factories. These facilities adhere to international environmental management standards, ensuring that our production processes meet rigorous criteria for sustainability.

Together, we can make a meaningful impact on the environment while providing you with the exceptional products you know and trust.

At MT Displays, we take systematic controls in our production seriously. We are dedicated to ensuring that every aspect of our manufacturing process creates little to no negative impact on the environment. By switching to eco-friendly packaging, we are taking another step towards reducing waste and promoting a healthier planet for future generations. We are excited about this initiative and grateful for your continued support as we strive to make a positive difference in the world.

- 1 We are fabricating our own Eco-friendly, biodegradable, and sustainable cardboard packaging boxes from green cardboard sheets that are not harmful to our planet.
- 2 As the first step in our packaging transformation journey, we have begun by removing traditional plastic bags if not required for certain products.
- 3 With the second step, for certain products, we have replaced traditional plastic bags with rusted nylon bags made of HDPE (high-density polyethylene). This switch not only reduces our reliance on single-use plastics but also ensures that our packaging materials are more durable and environmentally friendly.
- 4 As the third step we will be replacing certain plastic packages with other packages made from sustainable materials.



Green Deal



With the Paris Climate Agreement, the EU Green Agreement, and ISO London Declaration, steps have been taken to reduce greenhouse gas emissions in the world.

With the Green Deal, EU countries aim to reduce their carbon emissions by 55 percent by 2030 compared to 1990, and to be the first carbon neutral continent by 2050.

In addition, The Council of Europe has reached an agreement with the letter "Regulation of the European Parliament and of the Council Establishing a Carbon Border Adjustment Mechanism" (CBAM) dated March 15, 2022.

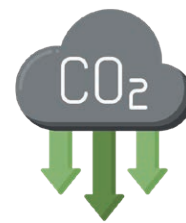
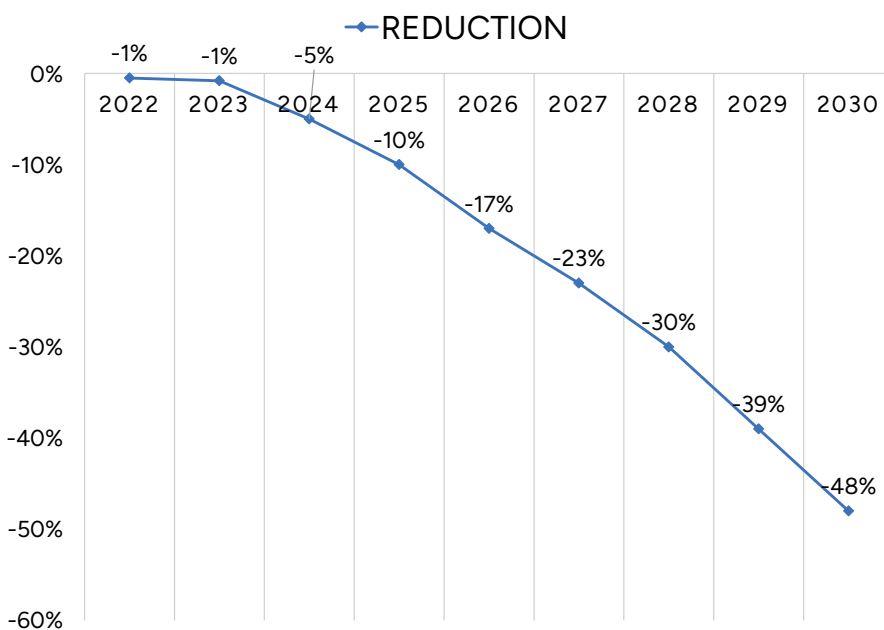
The aim is to prevent carbon leakage caused by companies shifting their production to countries with less emission restrictions.



This mechanism means that a cost equivalent to the carbon costs of designated goods produced within the borders of the European Union is applied to the same products imported into the European Union under the Emissions Trading System (ETS). It is seen that the importer within the borders of the European Union will receive a CBAM certificate within the scope of ETS, according to the greenhouse gas amounts of the product to be imported, in the import of the products in certain sectors.

Our Objectives and CO2e Balance

"Our goal is to reduce emissions by 48% by 2030*"



The objectives are based on MT Displays' greenhouse gas balance in Turkey. This was produced with the CO2 calculator from Quick Carbon Software for consumption in all categories.

Details regarding the methodology: The Greenhouse Gas Protocol Corporate Standard was followed in conducting the Corporate Carbon Footprint (CCF). For an extensive analysis of GHG emissions, the most popular international standard is the GHG Protocol, which is a collaboration between the World Resources Institute (WRI) and the World Business Council for Sustainable Development (WBCSD). It offers instructions for compiling and disclosing a systematic carbon footprint.

Our Path to Climate Neutral

We are committed to our sustainability journey and are actively pursuing Climate Neutral Certification, aiming to reduce, compensate, and monitor our CO2 emissions with the goal of achieving certification by the end of 2027.



Project Management for Sustainability Excellence:

With a dedicated team of professionals, we're rigorously managing a project focused on meeting the stringent standards of Climate Neutral Certification. Through meticulous planning and execution, we're driving towards significant reductions in our carbon footprint.

Upholding Environmental Accountability:

Our journey towards Climate Neutral Certification underscores our commitment to environmental accountability. By closely monitoring our CO2 emissions and implementing sustainable practices across our operations, we're striving to meet the rigorous criteria set by the Climate Neutral Certification Standard.



Our Achievement for ISO 14001 and 50001

MT Displays is proud to announce that we have successfully completed the standards and received certifications for ISO 14001, Standard for Environmental Management Systems, and ISO 50001, Energy Management Systems by the end of Q3 in 2024 with a team of professionals.



Commitment to Environmental Management

ISO 14001 certification signifies our dedication to effective environmental management. It helps us enhance performance through efficient resource use and waste reduction. Achieving ISO 14001 ensures we meet regulatory requirements and commit to continuous environmental improvement, aligning with our sustainability goals.



Focus on Energy Efficiency

ISO 50001 certification highlights our focus on energy efficiency and sustainable management. It helps us improve energy performance and efficiency. By adhering to ISO 50001, we optimize energy use, reduce our carbon footprint, and decrease costs, demonstrating our commitment to sustainable practices and innovative energy solutions.



Our ISO 14064 and ISO 14067 Journey

MT Displays runs a project for completing standards of ISO 14064, International Standard for GHG Emissions Inventories and Verification and ISO 14067 Product Carbon Footprint Verification by the end of 2027 with a team of professionals.



ISO 14064 Certification for GHG Emissions

MT Displays is working to achieve ISO 14064 certification for Greenhouse Gas (GHG) Emissions Inventories and Verification. This ensures accurate measurement and verification of our GHG emissions, promoting transparency. We aim to complete this by the end of 2027, reinforcing our commitment to reducing our carbon footprint.



ISO 14067 Product Carbon Footprint Verification

We are also pursuing ISO 14067 certification for Product Carbon Footprint Verification. This standard assesses the carbon footprint of our products from raw materials to disposal. Achieving this by the end of 2027 will provide customers with reliable data on our products' environmental impact and further our dedication to sustainability.





Our Corporate Governance

"Integrity, Transparency, and Accountability are the pillars of our corporate governance."

MT Displays places a strong emphasis on ethical practices, ensuring transparency and accountability in all our operations. We maintain the highest standards of integrity, fostering trust and confidence among our stakeholders.

We utilize **Sustainable IT Technologies** in all of our business processes.

Also, we possess the certifications of:

- ISO 9001, international standard for a quality management system,
- ISO 27001, international standard for information security.



Certificate

Standard **ISO 9001:2015**
Certificate Registr. No. **01 100 901863**

Certificate Holder: **M&T Displays**
MT REKLAM ANONİM ŞİRKETİ
CUMHURİYET MAH.SELİN SK. NO:1
ÇAYIROVA / KOCAELİ
TÜRKİYE

Scope: Design, Production and Sales of Aluminium Frame, Acrylic Brochure Sets, Boards, Illuminated Boards, Door Signs, Exhibition Systems, Menuboard and Personal Protection and Hygiene Equipment; Production and Sales of PET, Polystyrene, ABS Sheets.

Proof has been furnished by means of an audit that the requirements of ISO 9001:2015 are met.

Validity: The certificate is valid from 2023-10-30 until 2026-10-22.
First certification 2008

2023-10-31

TÜV Rheinland Türkiye
Saniye Esmutlu Sok. Çolakoğlu Plaza
No:12Kozyatağı, Kadıköy / İstanbul

www.tuv.com



SERTİFİKA / CERTIFICATE

SERTİFİKA CERTIFICATE

ICT CERTIFY
ICT CERTIFY TEST ve BELGELENDİRME HİZMETLERİ LTD.ŞTİ.

MT REKLAM ANONİM ŞİRKETİ
Adres/Address: Cumhuriyet Mahallesi Selin Sokak No:1 Çayırova -Kocaeli

ICT Certify Test ve Belgeleme LTD. ŞTİ. yukarıda adı geçen kuruluşun **BİLGİ GÜVENLİĞİ YÖNETİM SİSTEMİ**'nin denetimini ve aşağıda belirtilen standart gerekliliklere uygunluğunu onaylar:
ICT Certify Test and Certification LTD. that the **INFORMATION SECURITY MANAGEMENT SYSTEM** of the above-mentioned organisation has been audited and confirms that it complies with the standard requirements specified below.

TS ISO/IEC 27001:2022 BİLGİ GÜVENLİĞİ YÖNETİM SİSTEMİ
TS ISO/IEC 27001:2022 INFORMATION SECURITY MANAGEMENT SYSTEM
(Sua Rev. No: 03-22.09.2023)

Kapsam: ALÜMİNYUM ÇERÇEVE, AKRİLİK BROŞÜRLÜKLER, IŞIKLI IŞIKSIZ PANOLAR, KAPI ÖNÜ PANOLARI, FUAR SERGİLEME SİSTEMLERİ, MENÜ PANOLARI, KİŞİSEL KORUNMA VE HÜYEN ÜRÜNLERİ TASARIMI, ÜRETİMİ VE SATIŞI VE PET, HİPS LEVHA ÜRETİMİ VE SATIŞI İLE İLGİLİ OLARAK İTHALAT, İHRACAT, TRANSİT GÜMRÜKLEME GİBİ DIŞ TİCARET İŞLEMLERİNİ VE BU İŞLEMLERE İLİŞKİN LOJİSTİK, DEPOLAMA, MUHAŞEBE, FİNANS GİBİ FAALİYETLERİNİN ELEKTRONİK BİLGİ VARLIKLARI İLE BU VARLIKLARI KORUMAK AMACIYA KULLANDIĞI BİLİŞİM GÜVENLİĞİ

Scope: DESIGN, PRODUCTION AND SALES OF ALUMINIUM FRAMES, ACRYLIC BROCHURE HOLDERS, ILLUMINATED AND NON-ILLUMINATED PANELS, FRONT DOOR PANELS, FAIR DISPLAY SYSTEMS, MENU BOARDS, PERSONAL PROTECTION AND HYGIENE PRODUCTS, AND FOREIGN TRADE TRANSACTIONS SUCH AS IMPORT, EXPORT, TRANSIT CUSTOMS CLEARANCE RELATED TO THE PRODUCTION AND SALES OF PET, HIPS SHEETS, AND ELECTRONIC INFORMATION ASSETS OF ACTIVITIES SUCH AS LOGISTICS, STORAGE, ACCOUNTING, FINANCE RELATED TO THESE TRANSACTIONS, AND INFORMATION SECURITY USED TO PROTECT THESE ASSETS.

Sertifika No / Certificate Number: YS-206-01
İlk Yayın Tarihi / Date of Initial Issue: 25.10.2024
Son Düzenleme Tarihi / Date of Last Issue: 25.10.2024
Bitiş Tarihi / Certificate expiry date: 24.10.2025
Geçerlilik Tarihi / Certificate Valid until: 24.10.2027

TÜRKAK AB-5174-YS AB-5174-YS
TÜRKAK BDS NO YS-3920-0CC7

Lütfiye MİRZAĞLU
ICT Certify Test ve Belgeleme LTD. ŞTİ. Şirket Müdürü
Director of ICT Certify Test and Certifications

Bu sertifika, ilk belgeleme tarihinden itibaren her yıl yapılan gözetim denetimlerinden başarı bir şekilde tamamlanması durumunda, ilk yayın tarihinden itibaren 3 yıl süre ile geçerlidir. Sertifikanın geçerlilik durumunu <https://bds.turkak.org.tr/ozetmail> adresinden teyid edebilirsiniz.

This certificate is valid for 3 years from the date of first issue if the surveillance audits are successfully completed every year from the date of first certification. The validity status of the certificate is confirmed at <https://bds.turkak.org.tr/ozetmail>.

Katılmak Mahallesi 1443. Cadde Akın Sitesi No: 40/24 Çankaya/ANKARA
+90 534 207 71 23 / +90 312 217 66 36 / <https://www.ictcertify.com/> / info@ictcertify.com
BT-YS-48-02-13 / 01 / 28.02.2024

Objectives

Minimizing Complaints

Diligently striving to enhance our production procedures to minimize customer complaints by **4% in 2026** and by **8% by the end of 2030**, ensuring a higher level of satisfaction for our valued customers.



Deliveries on Time

Dedicated to improving our delivery performance, we aim to shorten lead times by **5% by 2026** and by **15% by the end of 2030**. We are also improving all product supply chain operations to ensure that our clients receive timely and reliable service.



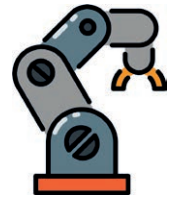
Increasing Efficiency

Focused on enhancing productivity, aiming for a **10% increase in 2026** and a remarkable **23% boost** by the end of **2030** to deliver greater efficiency and value to our customers.



Automation, AI & RFID

Actively integrating advanced technologies such as automated production lines, AI, and RFID systems into our operations, with a goal to increase their utilization between **2026** and **2027**.



The Way for Being Reliable & Accountable

With a team of professionals, MT Displays runs a project for completing standards of ISO 22301 Security and Resilience, Business Continuity Management Systems Certification by the end of **2027** for protecting against, reducing the likelihood of, and ensuring recovery from disruptive incidents.

Business

Continuity

Management

Ensuring Business Continuity Excellence

We're thrilled to share that we are embarking on this initiative, which underscores our commitment to ensuring the highest standards of business continuity for the benefit of our customers and stakeholders.

Securing Your Business Future

We are actively working towards meeting the rigorous standards of this project that reflects our dedication to safeguarding business operations and ensuring uninterrupted service for our valued customers.

Health and Safety Initiatives

Our commitment to sustainability includes prioritizing the health and safety of our employees and communities.

Employee Welfare Programs

We provide health and wellness programs to support the well-being of our employees and their families.

Emergency Response Training

We conduct regular training to prepare for emergency responses and ensure the safety of our workforce.



Our Success with ISO 45001

MT Displays is proud to announce that we have successfully run our project for completing standards of **ISO 45001 Occupational Health and Safety Management Systems** and obtained our certification by the end of Q3 in 2024.



Commitment to Safety Excellence

With a dedicated team of professionals, we have implemented rigorous safety management systems that ensure a safe and healthy working environment for all our employees. This certification underscores our dedication to continuous improvement and our proactive approach to identifying and mitigating occupational risks.



Systematic Compliance and Advancements

At MT Displays, we believe that a safe workplace is fundamental to our overall mission of sustainability and operational excellence. Through systematic adherence to ISO 45001 standards, we will continue to uphold these standards as we move forward, ensuring the well-being of our workforce and contributing positively to our industry.

Social Responsibility Initiatives

MT Displays takes pride in contributing to social responsibility initiatives that positively impact communities and promote equality. MT Displays recognizes its role in society and embraces corporate social responsibilities by:

1- Supporting Local Communities

We actively engage with local communities through various initiatives, including volunteering and charitable donations. We develop projects to support education, infrastructure and social welfare programs.

2- Promoting Diversity and Inclusion

We are committed to fostering an inclusive and diverse workplace environment that embraces equality and opportunity for all employees.

3- Ethical Supply Chain

We collaborate with suppliers who share our commitment to ethical and sustainable practices.

Our SEDEX Project

MT Displays runs a project for receiving certification of **SEDEX Supplier Ethical Data Exchange** by the end of **2027** with a team of professionals. We also prioritize collaborating with Sedex certified suppliers to ensure the highest standards of social and environmental responsibility throughout our supply chain.



Embarking on a Journey towards Ethical Excellence

Elevate your business standards with us as we commit to achieving SEDEX Supplier Ethical Data Exchange certification by the end of 2027, backed by a dedicated team of professionals ensuring ethical practices throughout.

Our Pledge to SEDEX Certification by 2027!

Be part of our ethical revolution! We're on a mission to achieve SEDEX Supplier Ethical Data Exchange certification by 2027, guided by a team of seasoned professionals dedicated to upholding the highest ethical standards in every facet of our operations.

Inclusive Decision Making



At MT Displays, inclusive and participatory decision-making is integral to our sustainability plan, ensuring diverse perspectives drive positive impact for our community and environment.

Access to Technical & Vocational Training



Providing all employees with access to excellent technical and vocational training options is a top priority at MT Displays. By investing in the skills and capabilities of our team, we empower individuals to reach their full potential.



Ethical Excellence & Supply Chain



We place high value on ethical excellence across our supply chain, guaranteeing honesty, openness, and sustainability in all facets of our business dealings in order to provide reliable goods and services to our clientele.



Equality in Employment and Income for Women



60% of our employees are women. We are committed to promoting equal opportunities in employment and income, aiming to increase the representation of women in skilled labor positions by 20%.



Educational Scholarships & Donations



We are dedicated to enhancing educational opportunities for children in need through scholarships and technical equipment donations, in collaboration with NGOs and local structures.



Information Technologies Class of Yeni Levent High School

Supporting Education with School Projects



At MT Displays, we are committed to supporting education, particularly for girls facing limited opportunities, through our aid projects, fostering empowerment and equality for a brighter future.



Ahmet Tufan Kalkan Kindergarten in Adana Kozan



Conclusion and Call to Action

At MT Displays, we remain steadfast in our dedication to sustainability and invite you to join us in our journey towards a greener and more sustainable future.

Cognizant of our collective responsibility towards building a sustainable future, we pledge our unwavering commitment to the principles outlined in this strategy and plan. By affixing our signatures below, we signify our dedication to fostering environmental stewardship, social equity, and economic prosperity for generations to come.

Sustainability Team

MT Displays

A stylized, handwritten signature in black ink, appearing to read 'mtlcaam'.



MT DISPLAYS FACTORY

Şekerpınar Cumhuriyet Mahallesi, Selin Sokak No:1 41400
Çayırova / Kocaeli - TURKEY
T: +90 262 658 88 80 (Pbx) F: +90 262 658 19 85
info@mtdisplays.com www.mtdisplays.com

MT DISPLAYS LLC

1081 Hanover St, Wilkes-Barre, PA 18706, USA
Toll Free: +1 855-478-0652
T: +1 201 636 4144 F: +1 201 636 4145
info@mtdisplaysllc.com www.mtdisplaysllc.com

MT DISPLAYS KFT

Hungary, 2071 Páty, Prologis Park Budapest M1, DC2 épület
T: +36 23 814 - 050
infohungary@mtdisplays.com